

Case Study: Blue Diamond Growers' Multi-Step Almond Journey via Synchronized Planning & Transportation

Serena Cooper, Senior Manager, Digital Supply Chain, Blue Diamond Growers

Anton Karnaukhov, VP of Application Delivery, XpertMinds

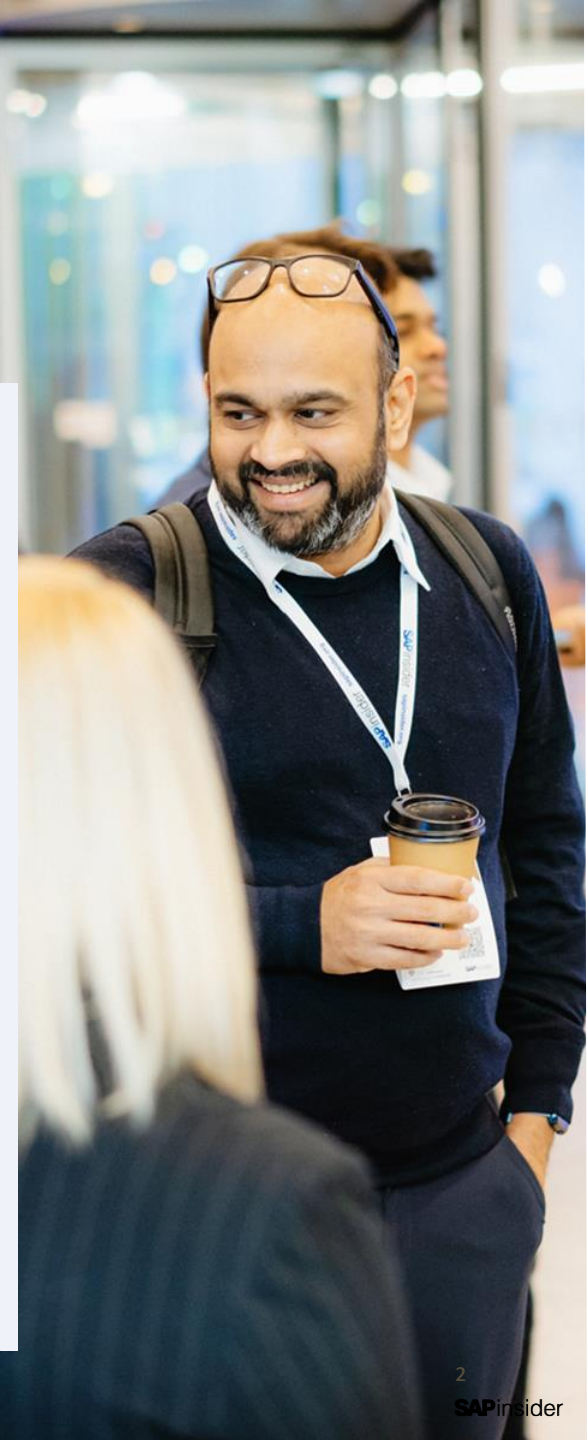
Chicago

2024

SAPinsider

What We'll Cover

- About Blue Diamond Growers & XpertMinds
- BDG Transportation Footprint
- Why SAP TM & BN4L
- Project Overview
- Deployed TM Functionality
- Transportation Planning Process Flow
- Business Network for Logistics
- Future Initiatives
- Wrap up



About Blue Diamond Growers and XpertMinds



The Who, What & Why of BDG

- Farmer's co-op owned by nearly 3,000 grower-members
 - Our farmers carefully grow and harvest the freshest California almonds, as generations did before them.
- BDG only *handler* (of approx. 100) with significant roasting & processing capabilities
 - We turn raw almonds into delicious almond-based snacks, beverages, and ingredients using state-of-the-art technology, which we've pioneered and improved for generations.
- Each almond product undergoes strict quality assessments and food safety standards.



3,000 Growers Strong

It begins with our hardworking cooperative, who carefully grow and harvest the freshest California almonds, as generations did before them.

*The Blue Diamond
-Family-*

1910: *The California Almond Growers Exchange* is founded, to lead California's almond industry

1915: The blue diamond—The Exchange, distinguishing its product from Spanish and Italian imports.

1949: the 6oz can of Blue Diamond Smokehouse almonds is introduced.

1980: The Exchange officially becomes Blue Diamond Growers.

1986: The debut of the "A Can a Week" ad campaign featuring actual growers.

2013: The Blue Diamond Almond Innovation Center opens—the first and only research center dedicated to almond innovation.

2019: Blue Diamond Growers expands supply chain capabilities with expanded production and cold storage capacity to meet growing demand

Today: new generation of growers, trust Blue Diamond Growers to deliver the benefits of almonds to the world.

2023 SAP Innovation Award Transformation Titan



“By leveraging the SAP S/4HANA ecosystem, and specifically with SAP Transportation Management and SAP Business Network for Logistics, SAP Integrated Business Planning, and SAP Analytics Cloud, we have created the ideal foundation for an intelligent, data-driven cooperative that provides the best value for our growers.”

Steve Birgfeld

Vice President Information Technology and Services

Blue Diamond Growers



Transportation Management Experts

SAP's Go-to Partner for TM & Logistics Collaboration



Deep Transportation Management Expertise

Guiding customers through business process decisions as well as solution implementation in areas such as:

- Road, Ocean and Rail modes of transport
- Logistics Collaboration
- Transportation Optimization
- Freight Execution & Monitoring
- Integration with SAP ERP & 3rd-Party Systems
- Order & Delivery Integration
- Freight Agreements & Cost Settlement

Our SAP Consulting Focus

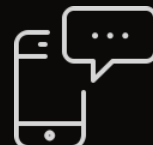
- *Transportation Management*
- *Logistics Collaboration with SAP Business Network*
- *S/4HANA Digital Core*

“XpertMinds is truly a top-notch organization with a focus on results...”

– Connie Moylan, Woodgrain Millwork CIO



contact@xpertminds.net



844 SAP-MIND
(844-727-6463)



www.xpertminds.net

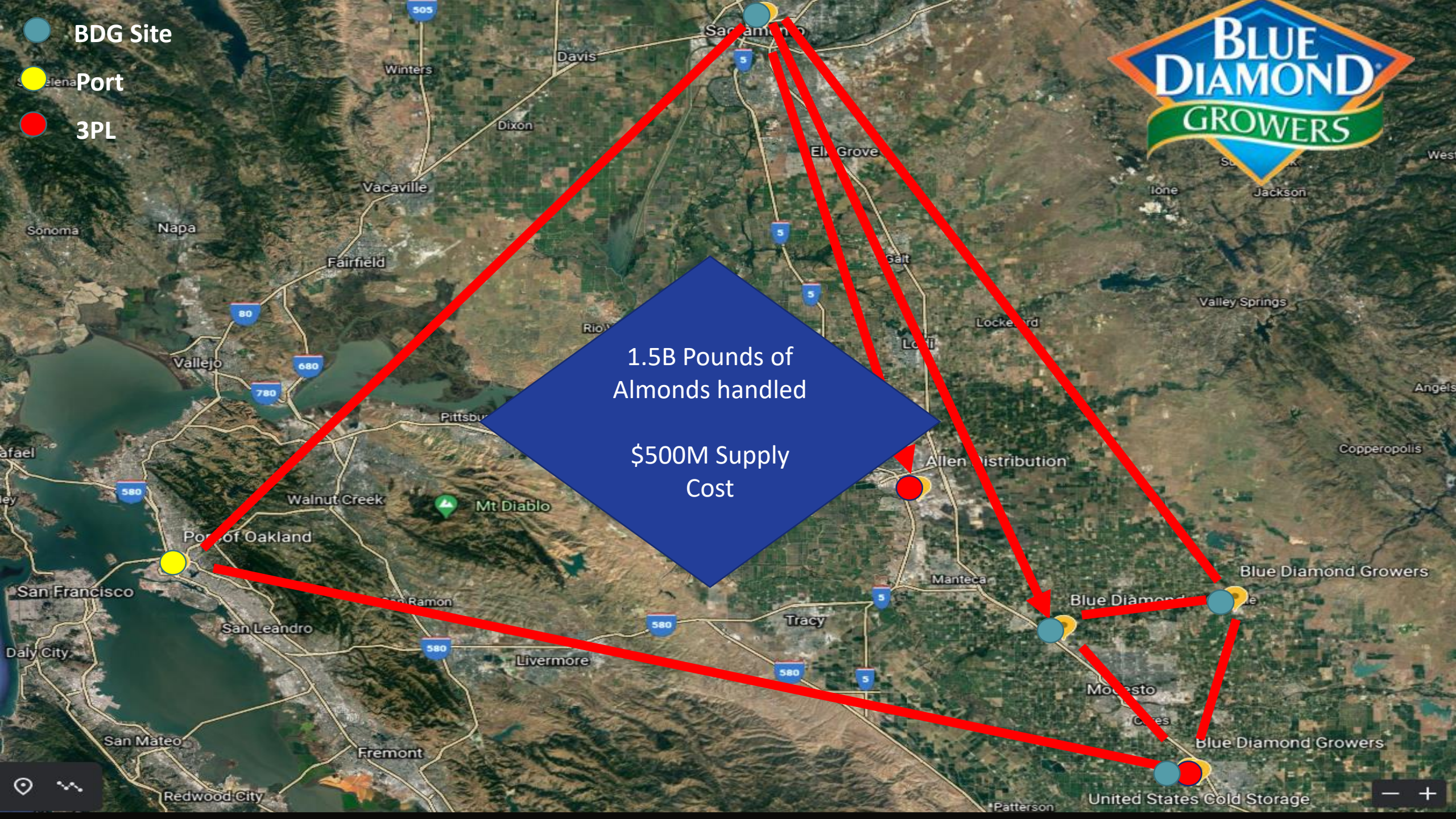
Blue Diamond Growers Transportation Footprint





- BDG Site
- Alameda Port
- 3PL

1.5B Pounds of Almonds handled
\$500M Supply Cost



Blue Diamond Global Business Breadth



Why SAP TM & BN4L?



Challenges

Resilience

- Relied on manual processes for creating and updating bookings
- COVID impact on internal and partner staffing put a huge strain on manual processes

Visibility

- Lack of single source for visibility information
- Not being able to expose visibility to CSRs

Freight Cost

- Lack of visibility into expected/planned freight costs prior to receiving the invoice
- Large tolerances for carrier invoices

Business Benefits

Visibility and Velocity of Data

- Productivity improvements for data entry/reporting
- Ability to act quickly with real-time updates
- Freight visibility across shipments and countries
- Provides benchmark data for supplier performance

Error Reduction

- Improved accuracy and reliability of data across contributors

Hard Savings

- Freight cost reduction

Freight Process

- Move from manual websites to one dynamic tool for securing capacity
- Ability to respond to 5-week commitment periods

Automation and Engagement

- Improved visibility to warehouse scheduling
- Improved customer service
- Improved resiliency and agility

Project Overview



Project Overview

- Existing SAP S/4HANA 2020 instance
- SAP solutions
 - In-stack (aka embedded) SAP Transportation Management
 - SAP Business Network for Logistics
- Agile Project Management
- Phase 1 – Container Export Shipments
- Phase 2 – Domestic Shipments

Benefits of in-stack TM

- Reduced hardware cost
- No need for master data replication (business partners, materials, etc.)
- Tighter integration (for example, updating of delivery dates on deliveries)

- Considerations for extra-stack TM deployment not applicable to BDG
 - Multiple SAP ERP systems
 - Use of Global Logistics Company functionality

Agile vs Waterfall Project Management

	Agile	Waterfall/ASAP
Business Requirements	Dynamic	Up-front & Static
Validation of Solution	Demos & Feedback	Documentation
Change	Responded To	Avoided
Hands-on in the System	Early & Often	Last Minute
Integration	Continuous	Isolated
Teams	Self-Directed	Micro-Managed

Deployed SAP TM Functionality



Deployed SAP TM Functionality



Order Management

- Sales orders
- Purchase orders
- STOs
- Deliveries

Transportation Planning

- Optimizer
- Consolidation
- Routing, resource and carrier selection
- Background planning
- Interactive planning in Transportation Cockpit

Transportation Execution

- Track & trace via SAP GTT with project44

Freight Costing and Settlement

- Mode-specific freight agreements
- Charge calculation
- Outbound settlement to profitability analysis
- Inbound settlement to material valuation

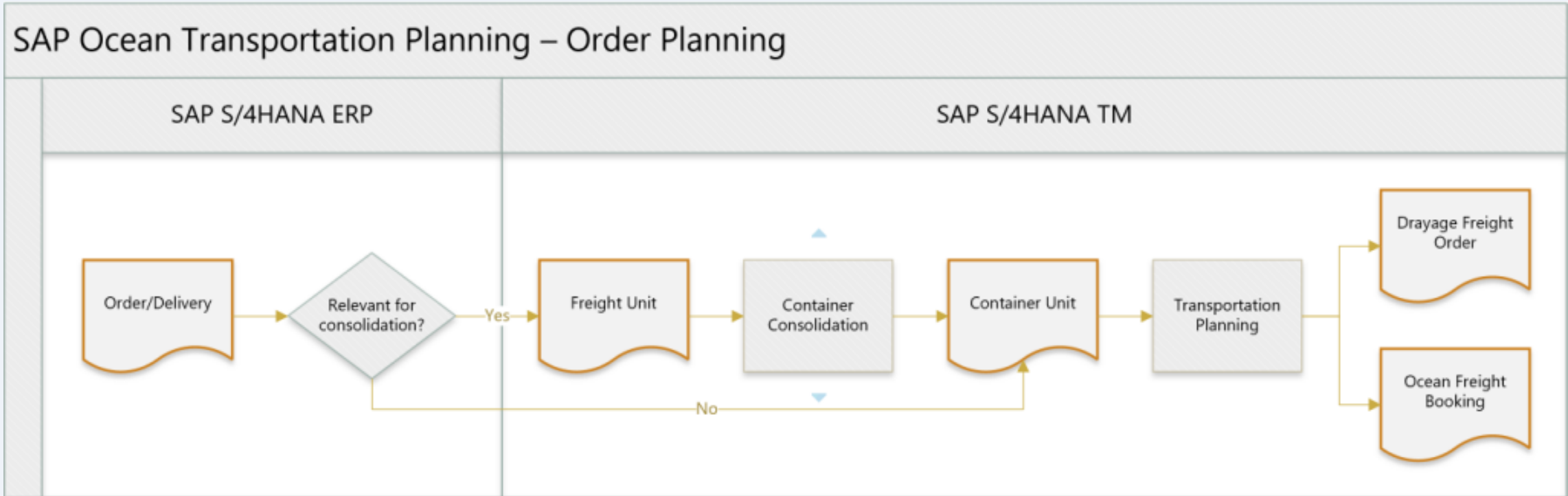
Analytics and Reporting

- POWL operational reporting
- SAP BI integration

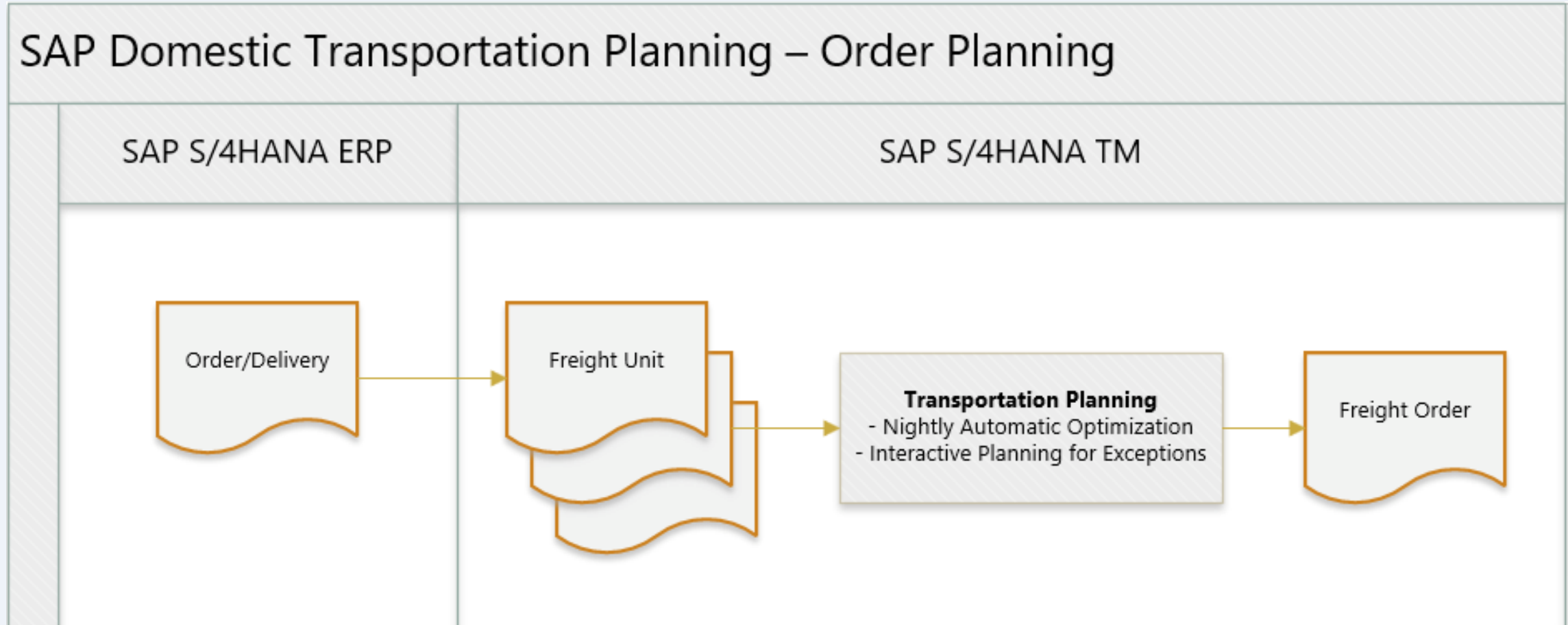
TM Planning Process Flow



Transportation Planning - Export



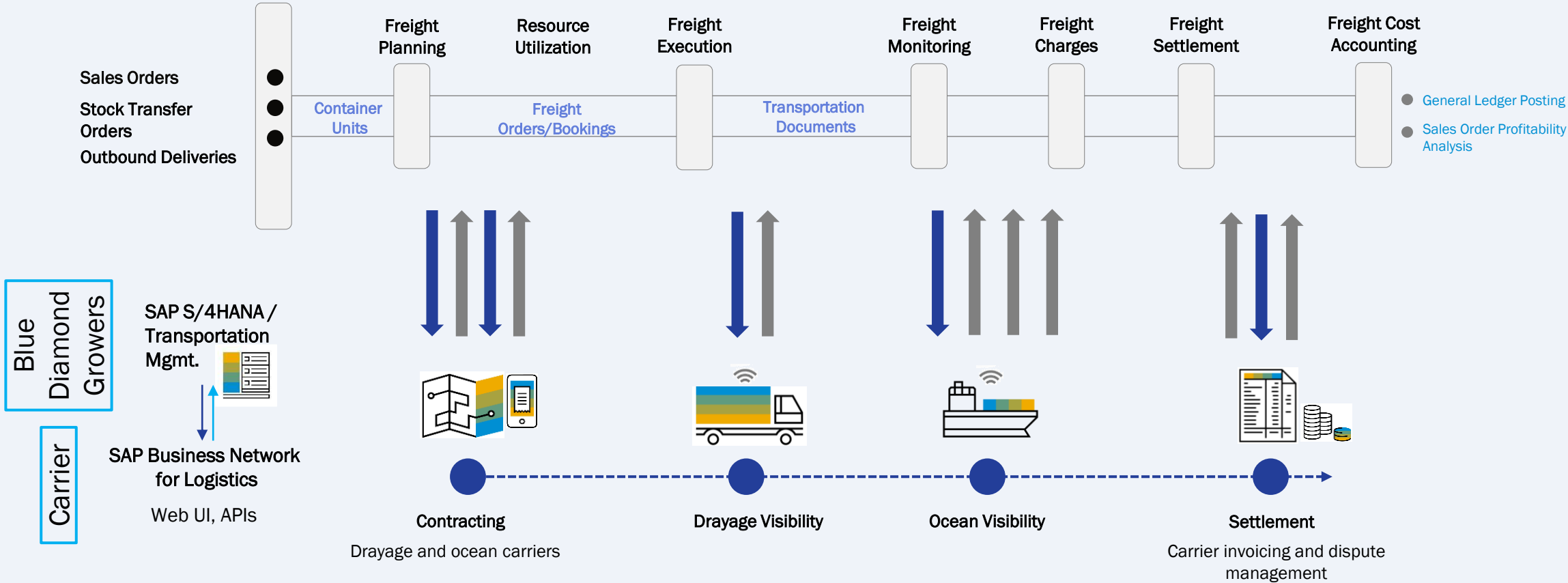
Transportation Planning - Domestic



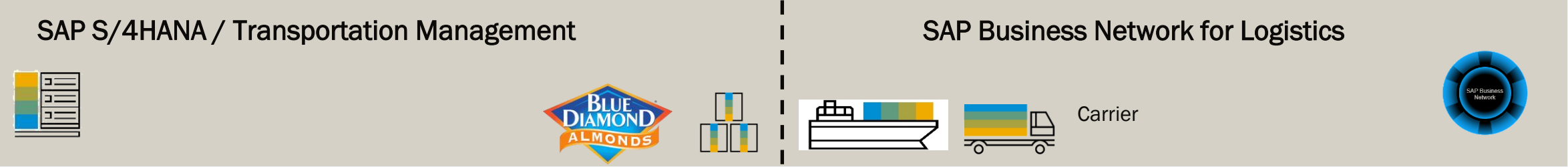
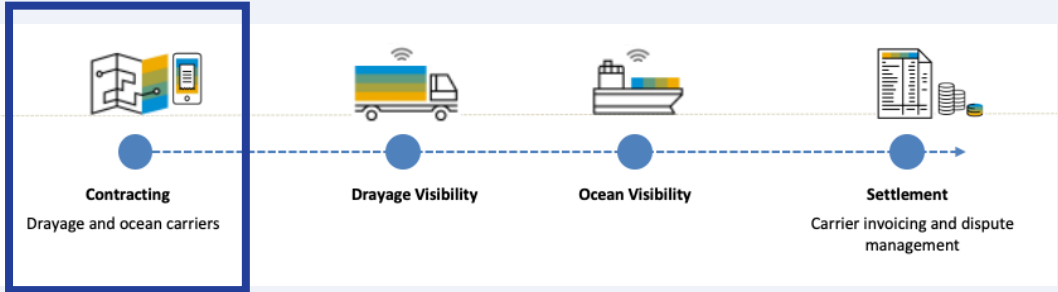
Business Network for Logistics



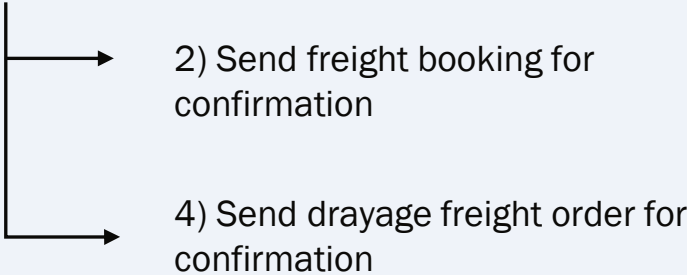
End-to-End Transportation Collaboration



Contracting - Export



1) Create freight order / booking



DESCARTES™

3) Confirm ocean freight booking

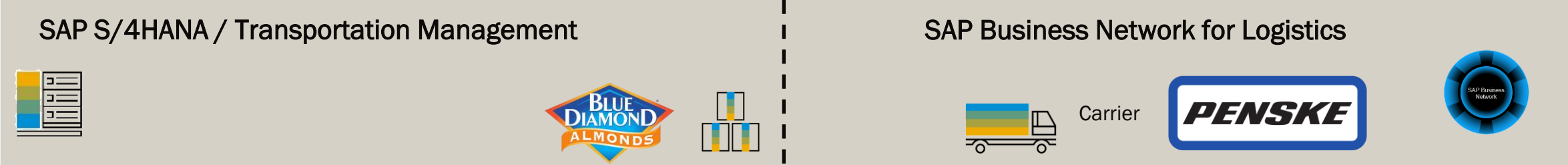
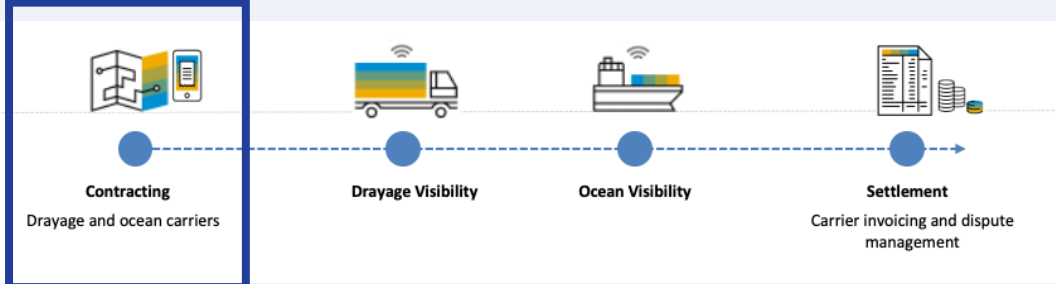
Web UI / API

5) Confirm drayage freight order

7) Status update on confirmed freight order, set on ready for transportation execution

6) Add additional details (e.g. name of driver, license plate of vehicle, vessel number)

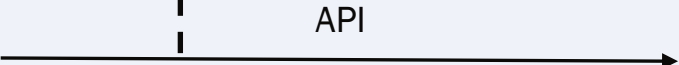
Contracting - Domestic



1) Create freight order

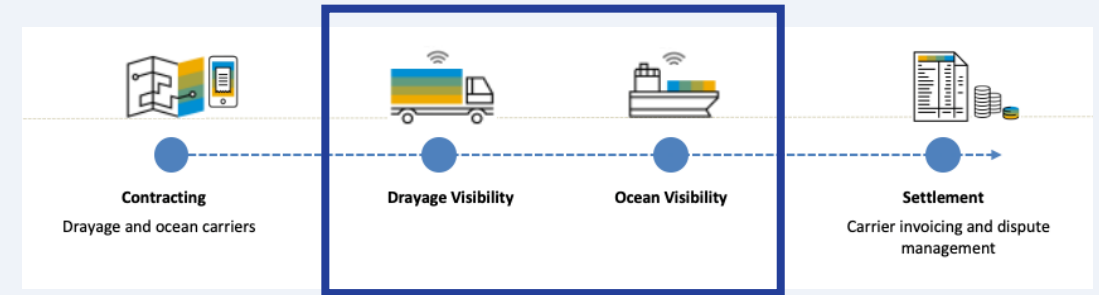


2) Send freight order for confirmation



3) Confirm freight order

Visibility - Export



SAP S/4HANA / Transportation Management



Carrier



SAP Business Network for Logistics

2) Mark drayage FO as “In Execution”

4) Mark drayage FO “Executed”, mark ocean FB as “Ready for Transportation Execution”

6) Update ocean FB as “In Execution” (making it available for invoicing)

6) React upon changes in freight order/booking execution (e.g. inform customers, re-consignment, ...)

Web UI / API

Web UI / API

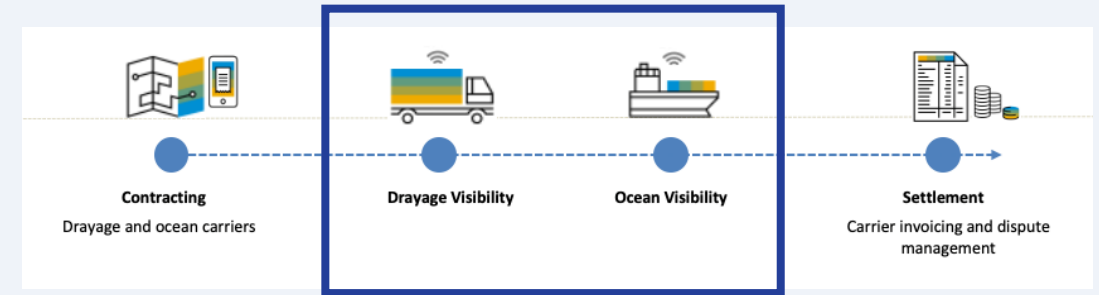


1) Report pick-up of container at plant

3) Report arrival and delivery of container at terminal

5) Report ocean leg milestones (departure, delay, arrival, etc.)

Visibility - Domestic



SAP S/4HANA / Transportation Management



SAP Business Network for Logistics



Carrier



2) Mark FO as "In Execution"
(making it available for invoicing)



API &

1) Report departure from pick-up location

4) Update Execution data on FO



API &

3) Report delays, POD, etc. events

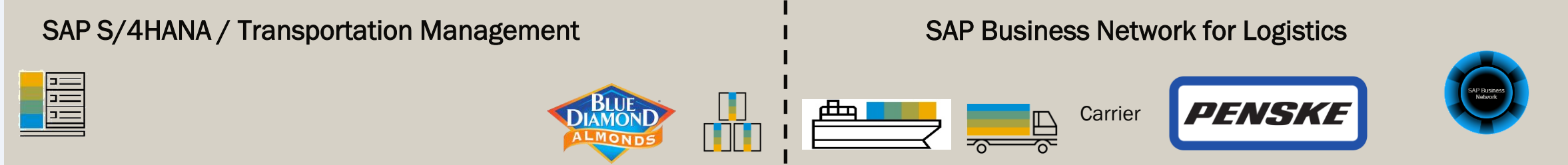
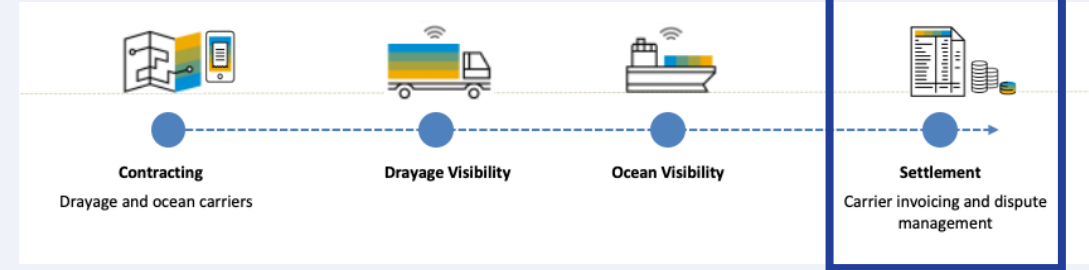
6) Mark FO as "Executed"



API &

5) Report arrival at delivery location

Settlement – Export & Domestic



1) Share freight document with expected charges

3) Receive carrier invoice



4) Raise and process dispute

7) Update charges

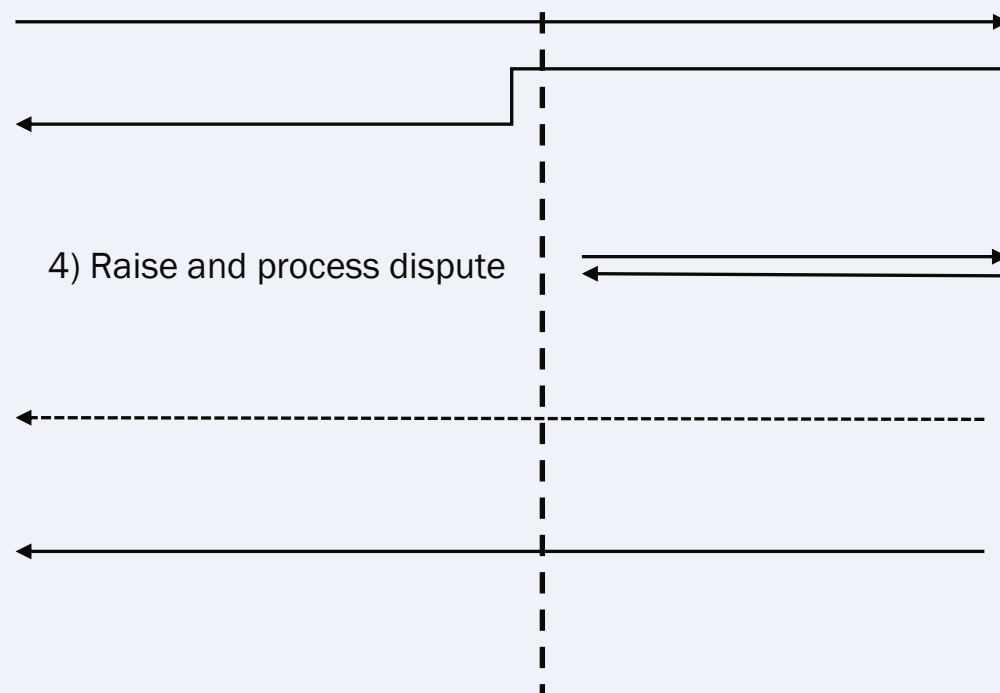
9) Create carrier invoice and process payment

2) Create invoice, add charges if required and submit

5) Collaborate on dispute

6) Resolve dispute

8) Resubmit invoice



Dock Appointment Scheduling

Ease appointment collaboration

Carriers book appointment via a self-service. Guest access for carriers with whom no direct business relationship exists, in case of supplier/customer-managed, or subcontracted transports

Efficient dock and gate operations

View and manage dock appointments in a calendar, see status at a glance via color coding. Access worklists to assign gates, perform lean check-in and check-out, add notes and attachments.

Split duties between you as a shipper and your (external) warehouse / yard operators

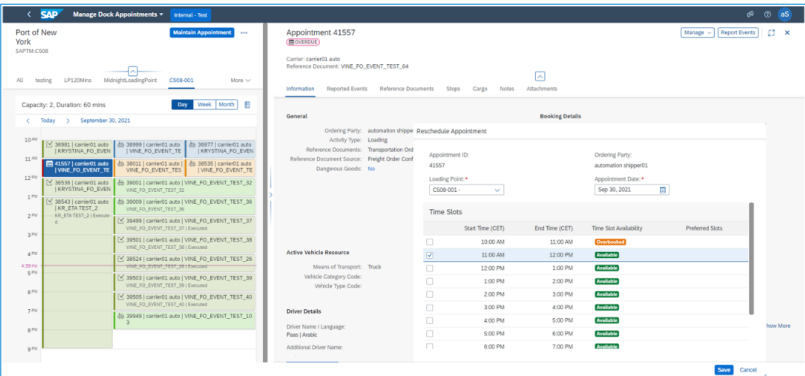
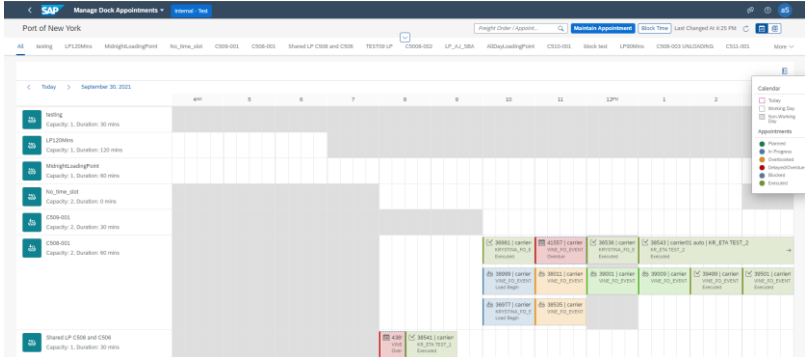
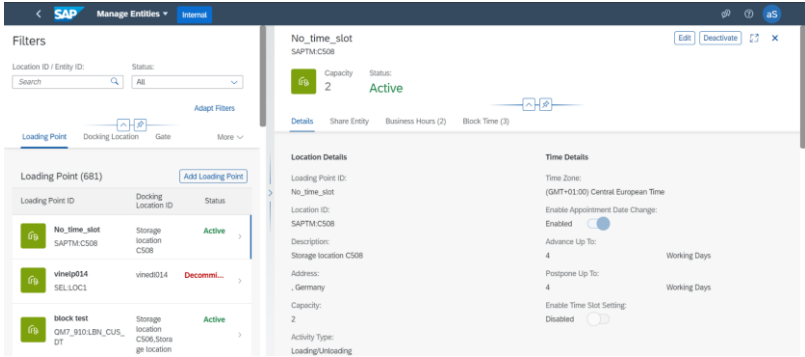
Instantly share master and operational data across all involved parties

Master data

Define yard, gate, docking locations, loading points and capacities. Leverage calendar view and color coding to keep track of dock appointment status.

Integrate with your logistics backend systems for seamless operations

Standard or cookbook-based integration via open APIs



Future Initiatives



Continuous Improvement

- Export
 - Expand the use of Descartes integration to all/most ocean carriers
 - Ocean Schedules – Flexibility vs Productivity
 - Carrier invoicing technical issues
- Domestic
 - Reduce manual planning scenarios
 - On-time Delivery Reporting
 - TM Order Scheduling

Wrap up



Where to Find More Information

<https://www.sap.com/asset/dynamic/2023/10/c07c8a52-947e-0010-bca6-c68f7e60039b.html>

- Blue Diamond Growers customer success story on SAP TM and BN4L implementation

<https://xpertminds.net/tag/transportation-management/>

- XpertMinds blog focused on SAP Transportation Management topics

<https://roadmaps.sap.com/board?range=CURRENT-LAST&PRODUCT=089E017A62AB1EDAA6CCB767DDDCC0E5#Q4%202024>

- SAP Transportation Management roadmap

<https://roadmaps.sap.com/board?PRODUCT=73554900100800001025&range=CURRENT-LAST#Q2%202024>

- SAP Business Network for Logistics roadmap

Key Points to Take Home

- SAP Transportation Management provides a best-of-breed foundation for transportation planning and freight cost management
- SAP Business Network for Logistics is instrumental for effective carrier collaboration
- Investigate integration of SAP with other logistics solutions – Descartes, project44, etc. – to help reduce manual effort and increase digitization
- Implement SAP TM and BN4L in multiple phases (for example by mode, geography, etc.) to minimize risk and reduce change management effort
- Utilize Agile Project Management to increase business ownership and participation

Thank you! Any Questions?

Serena Cooper

[Linkedin.com/in/serenacooper](https://www.linkedin.com/in/serenacooper)

Anton Karnaukhov

[Linkedin.com/in/anton-Karnaukhov-40bb698](https://www.linkedin.com/in/anton-Karnaukhov-40bb698)

anton.Karnaukhov@xpertminds.net

+1 (916) 715-8464

www.xpertminds.net

Please remember to
complete your session
evaluation.

SAPinsider



SAPinsider.org

PO Box 982Hampstead, NH 03841
Copyright © 2024 Wellesley Information Services.
All rights reserved.

SAP and other SAP products and services mentioned herein as well as their respective logos are trademarks or registered trademarks of SAP SE (or an SAP affiliate company) in Germany and other countries. All other product and service names mentioned are the trademarks of their respective companies. Wellesley Information Services is neither owned nor controlled by SAP SE.

**SAPinsider
comprises the
largest and fastest
growing SAP
membership group
with more than
800,000 members
worldwide.**
