

# Case Study: Moving From On-Premise to The Cloud with SAP Integration Suite

**Antonio Maradiaga**, Developer Advocate, SAP  
**Stefano Passaro**, IT Project Manager, Nedgia - Naturgy group

Barcelona

---

**2024**

**SAP**insider



## In This Session

---

In this session, you will learn the benefits and challenges of transitioning your business operations to the cloud and the benefits of SAP Integration Suite. Discover the journey that Nedgia has been through to become a true “Cloud First” company and run its integrations in SAP Integration Suite.

---

Do you know what a poem, Santiago's Way and SAP Integration Suite have in common?

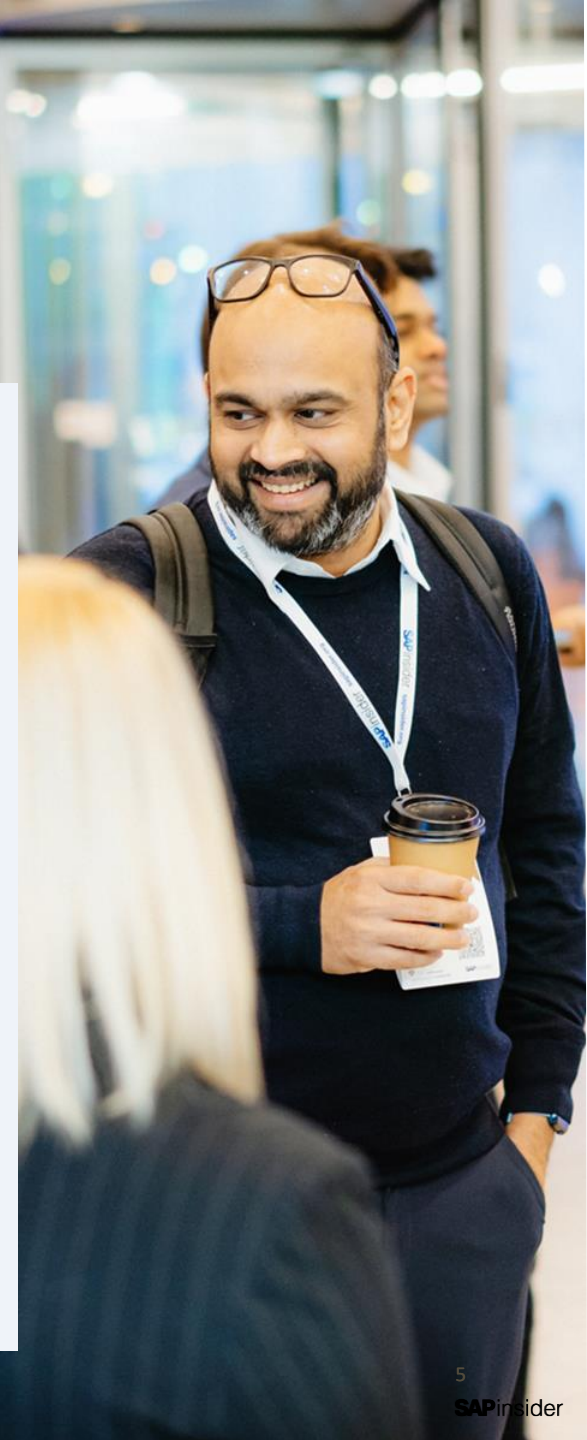




# What We'll Cover

---

- SAP Integration Suite
- Nedgia's integration journey
- Migration tools and assessments



# SAP Integration Suite

---

SAP Integration Suite is an open and modular iPaaS supporting your enterprise-wide integration needs for both SAP and non-SAP integration scenarios.

# SAP's Investment in Integration

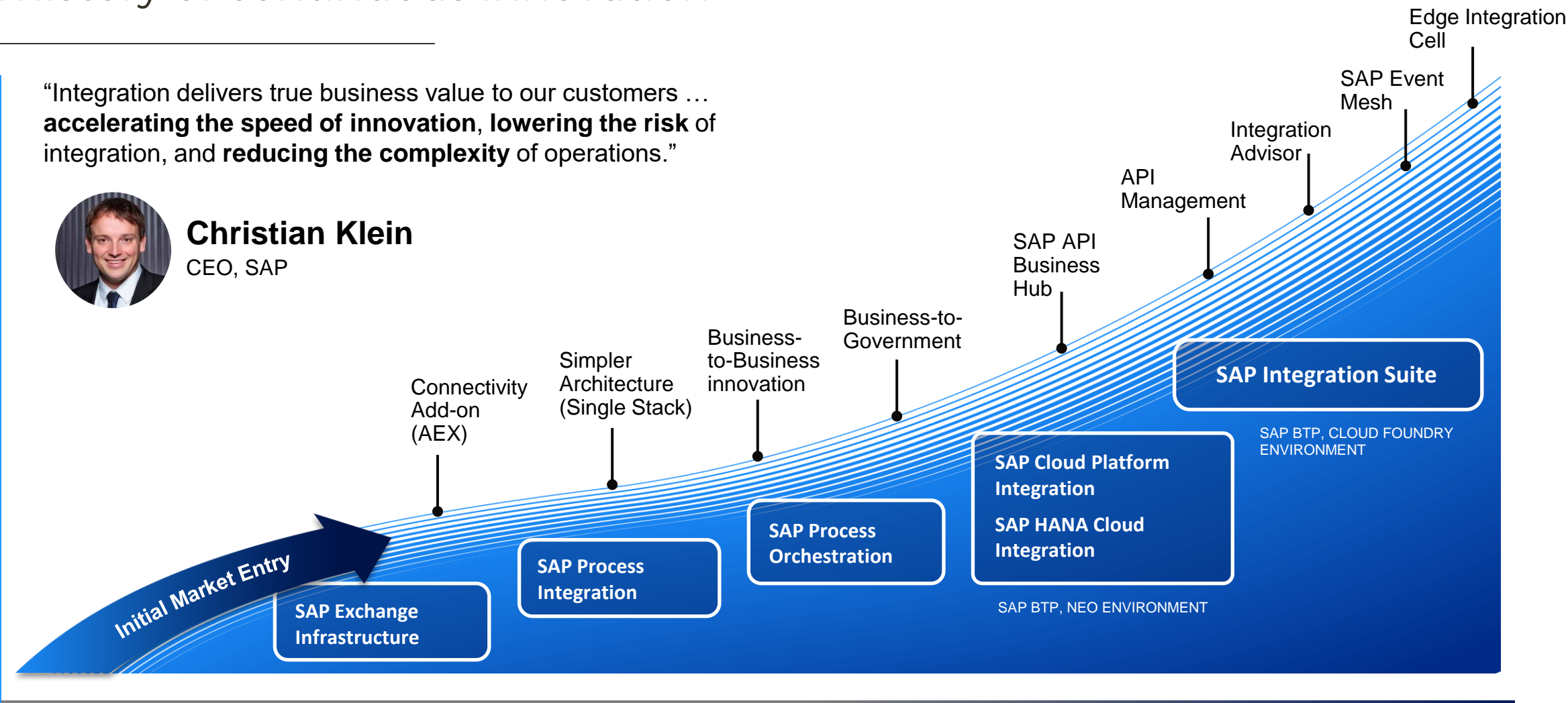
## A history of continuous innovation

“Integration delivers true business value to our customers ...  
**accelerating the speed of innovation, lowering the risk of**  
integration, and **reducing the complexity** of operations.”



**Christian Klein**  
CEO, SAP

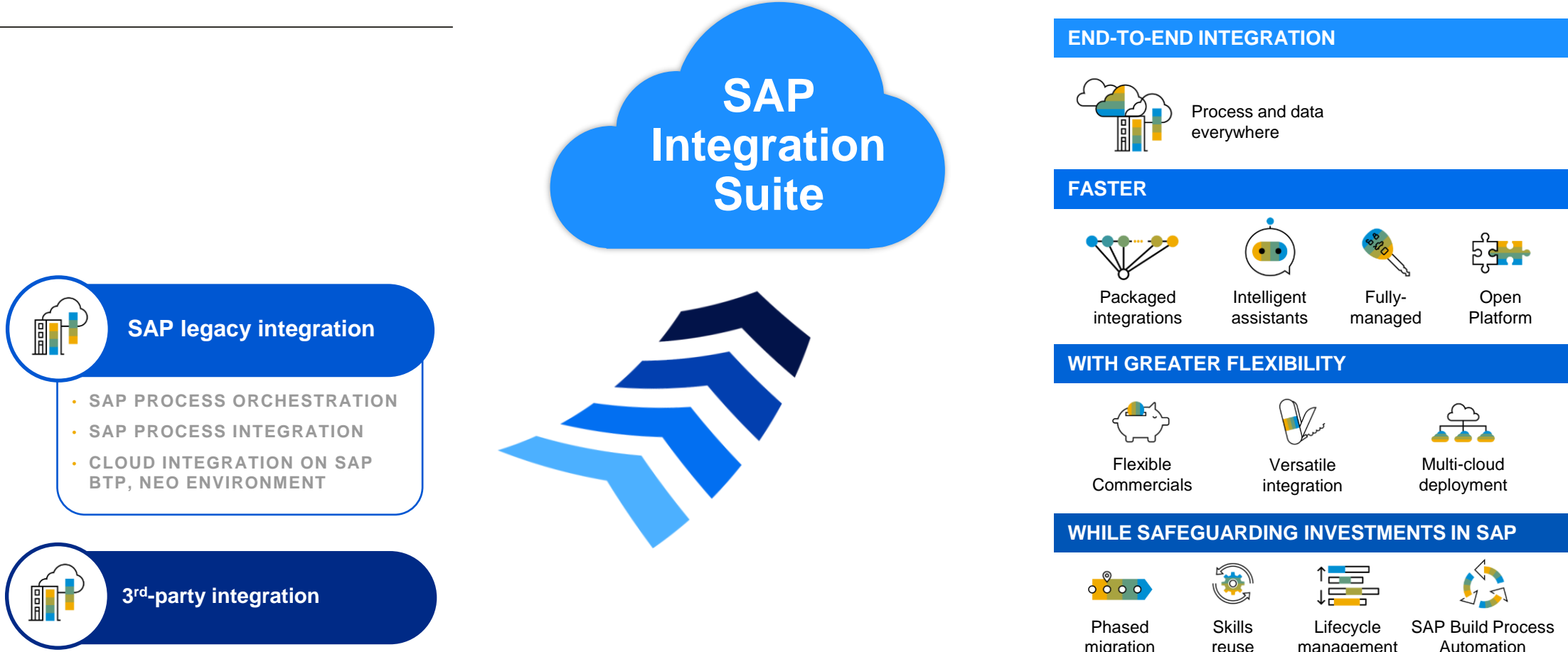
CUSTOMER VALUE



2003

TODAY

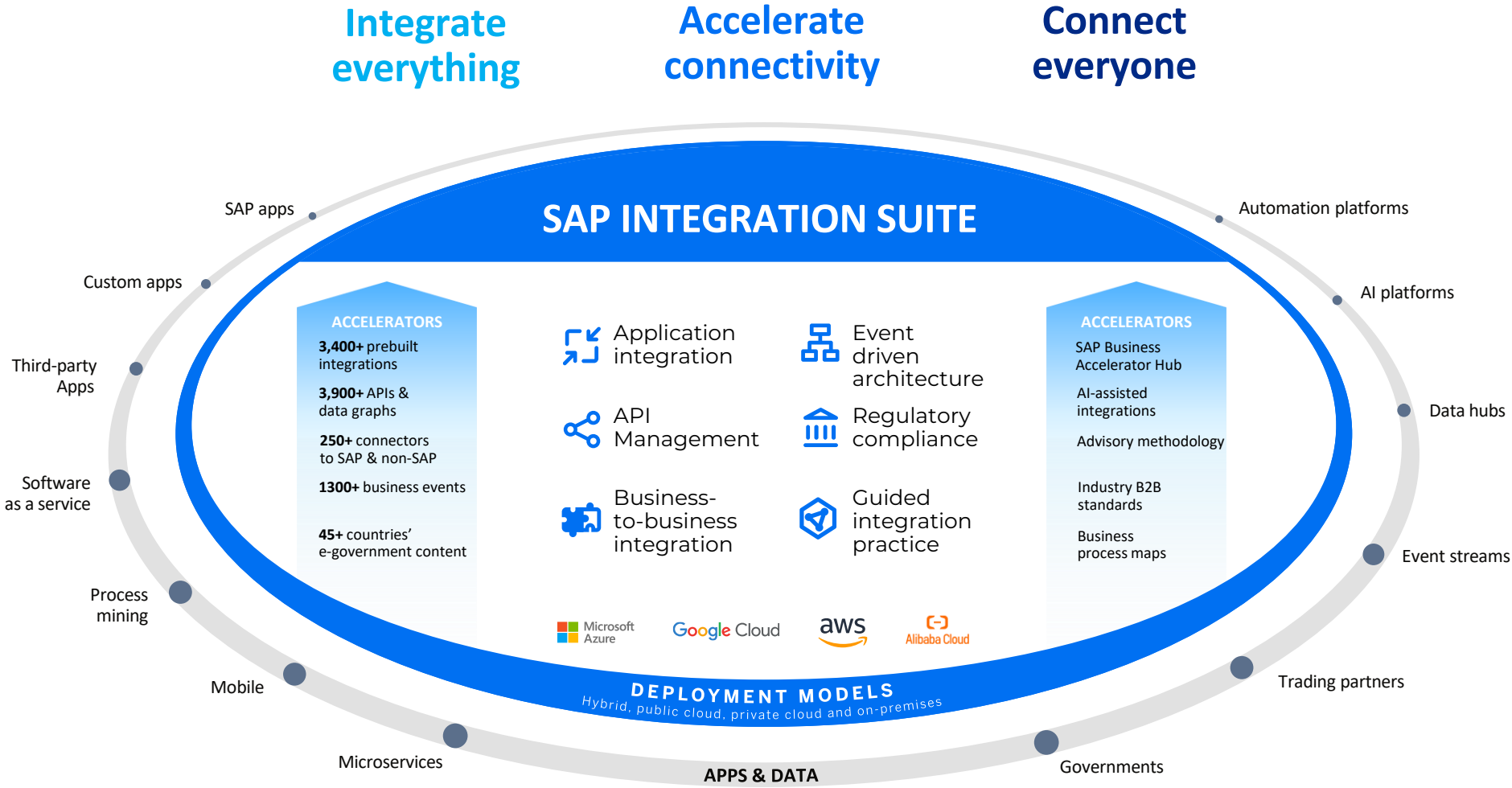
# Modernize integration to power your transformation journey



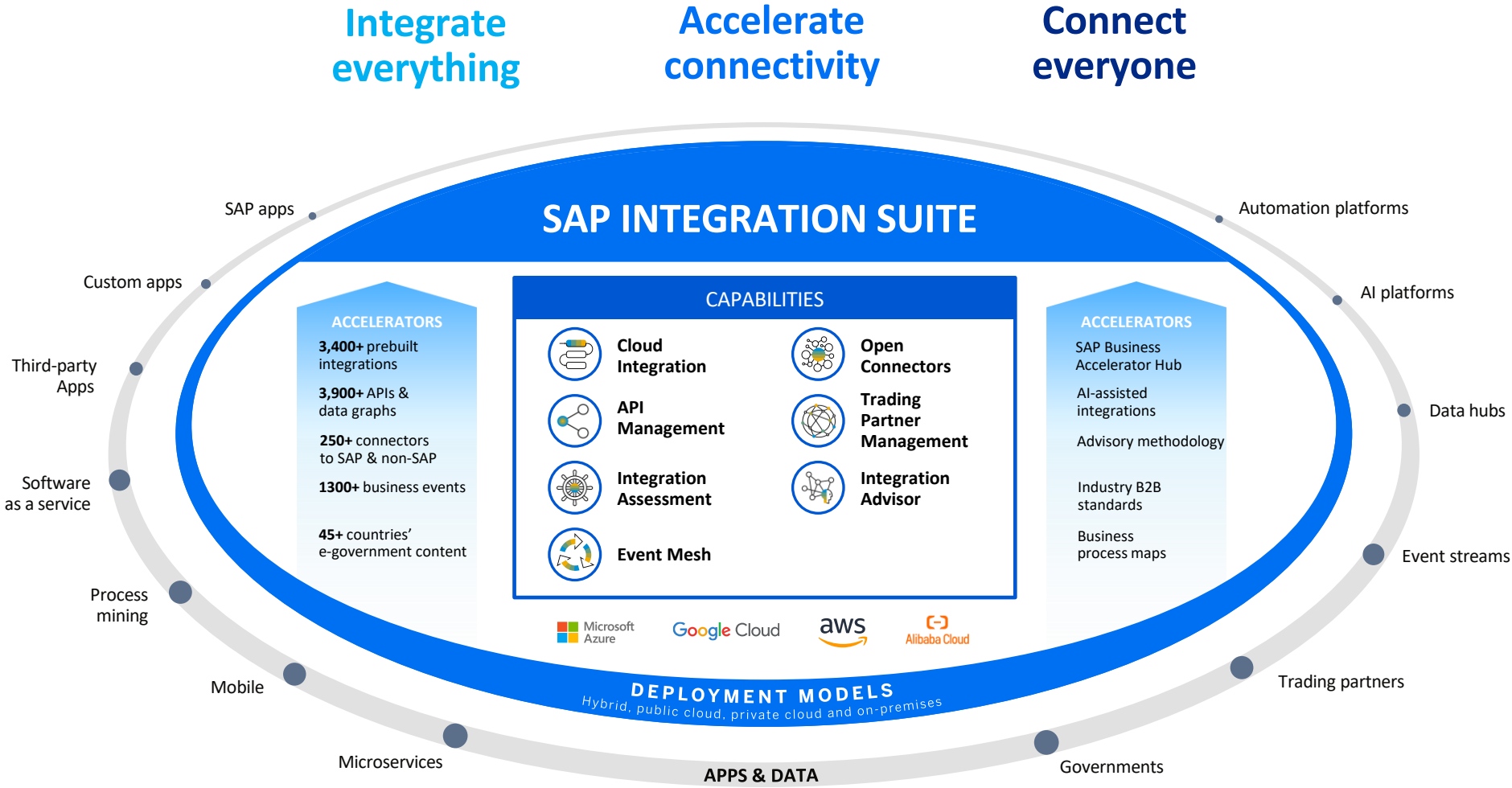
**Simplify and consolidate integration** to achieve end-to-end-processes faster at a lower TCO



# SAP Integration Suite: Integrate everything to innovate now



# SAP Integration Suite: Integrate everything to innovate now



# Nedgia's integration journey

---



# Nedgia in a nutshell

Company of the Naturgy group, leader in Spain in distribution of natural gas, renewable gases and LPG

## Capillary and modern distribution network

- Spain has 94,344 km of gas distribution networks, covering **85% of the population and 100% of the industry**



## Regional, resilient and responsible

- We supply gas to **5.6M supply points (70% of consumers)**
- ~**60,000 km** of underground networks in **11 Autonomous Communities** and more than **1,150 municipalities**
- ~ **90,000 new customers** connected per year
- Zero accident goal**, extensive EE.CC network
- Digitalization and innovation** for excellence





# Strategic plan

Pledged with the energy transition seeing it as an opportunity

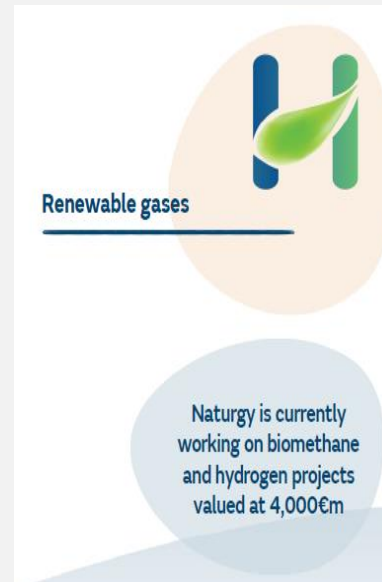
## KEY ENVIRONMENTAL CHALLENGES

**100% renewable gas by 2050** + **Carbon neutral by 2050** = **... commitment at strategic plan**

Promoting **biomethane and H<sub>2</sub>**, enabling net zero Scope 1 emissions for our customers

Neutralizing remaining emissions with CCS and nature-based solutions

**nedZero**  
Our road to carbon neutrality



## OUR APPROACH

- Leveraging on existing energy networks is the **most cost-effective way to meet EU climate targets**.
- Gas has a **unique value proposition to solve the current energy trilemma**
- Gas networks allow for **balance in the energy demand and supply in Spain**
- Gas is **the energy of choice for heat, industrial production and CCGT electricity generation**.
- A **full aggressive scenario** envisioning the complete electrification of building energy demands is not pragmatic within the context of Spain and Europe.
- For public acceptance and thus, for political feasibility, **a gradual approach to transition is essential**.
- Spain is strategically well positioned **to benefit from circular economy and to act as potential hydrogen hub**.

# Challenges

---

## BUSINESS CHALLENGES

Process fragmentation

Data Silos

Complexity

Traceability

Homogeneity



## TECHNICAL CHALLENGES

Asynchronous interfaces

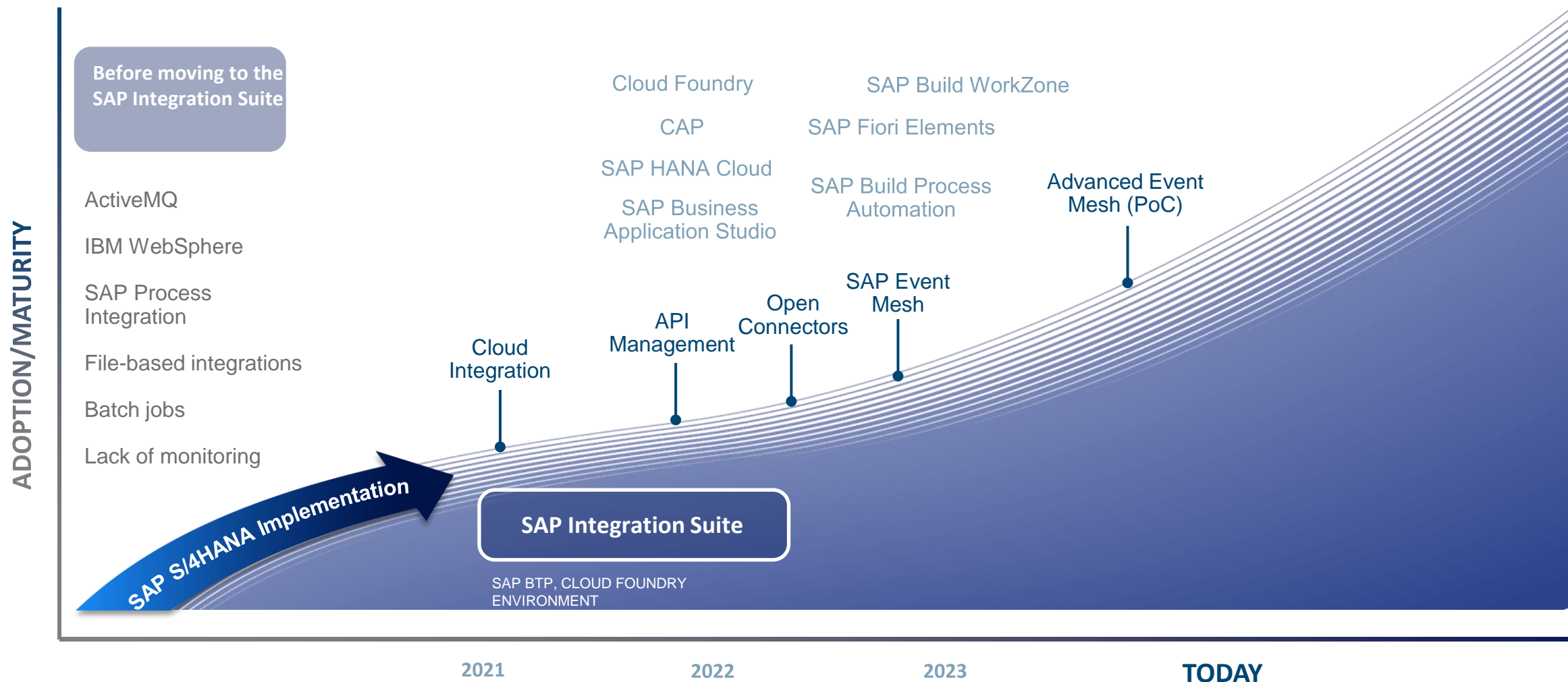
High level of customization

Support ending in 2025

Scalability

Nedgia decided to launch a SAP S/4HANA implementation project to cover and transform all the processes associated with the asset life cycle

# Nedgia's integration journey

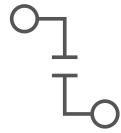


# Before moving to the Cloud

---



File-based  
Integrations



Process  
fragmentation



Batch jobs



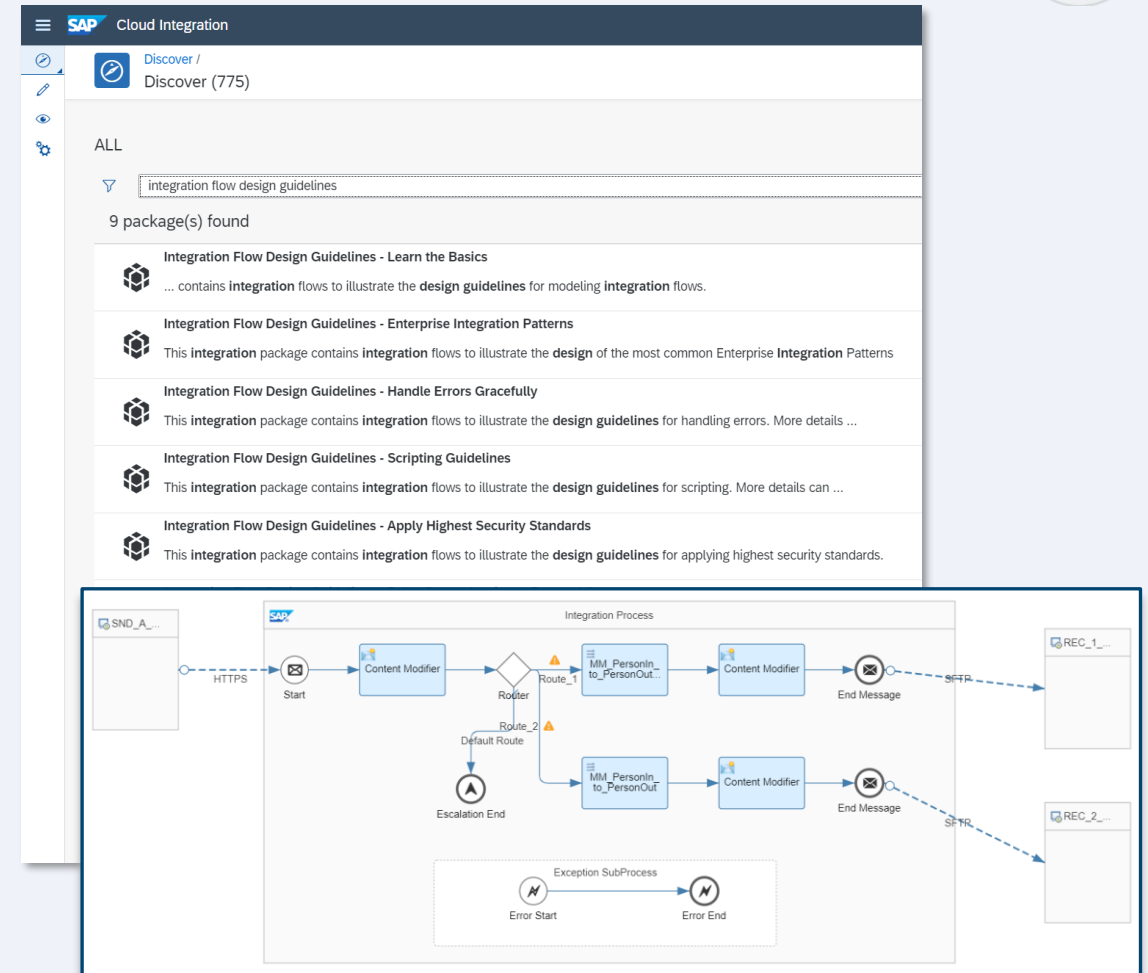
Monitoring



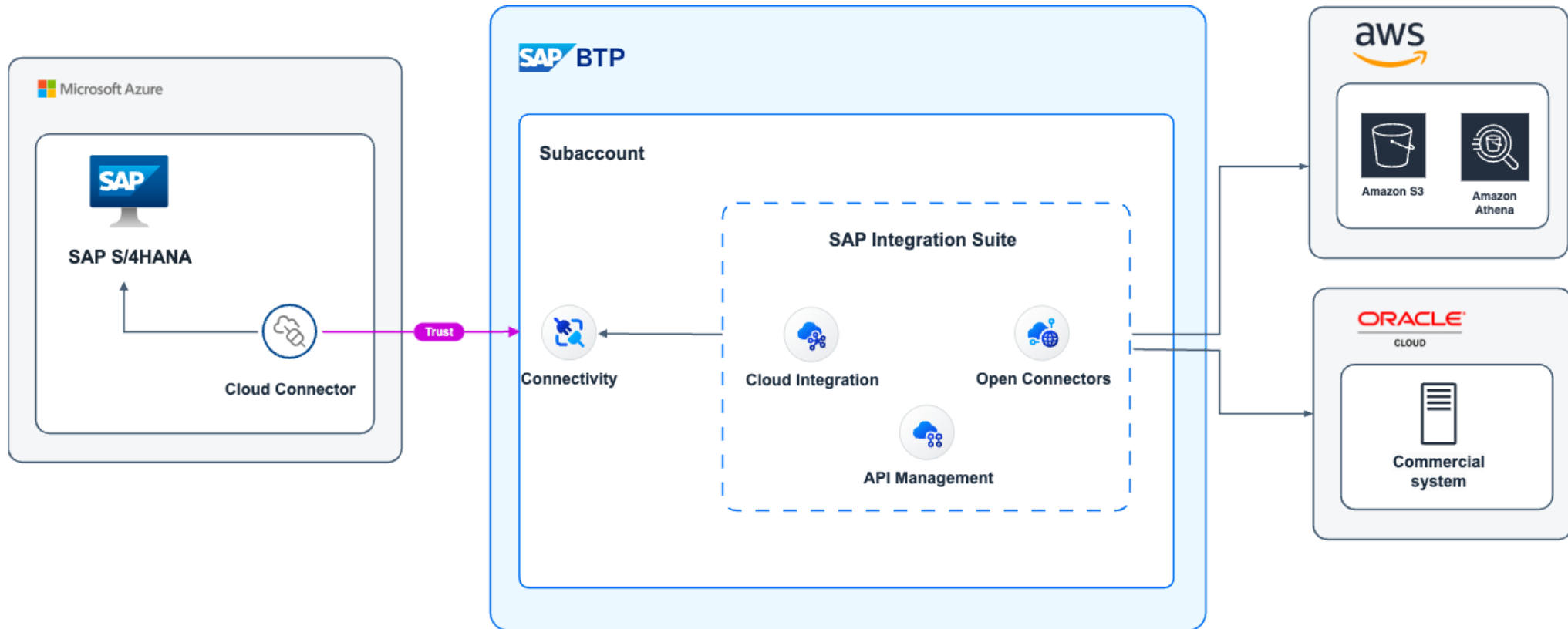
# Cloud Integration

Simplifies and accelerates the integration of data, processes, applications and business networks to help companies achieve faster business outcomes.

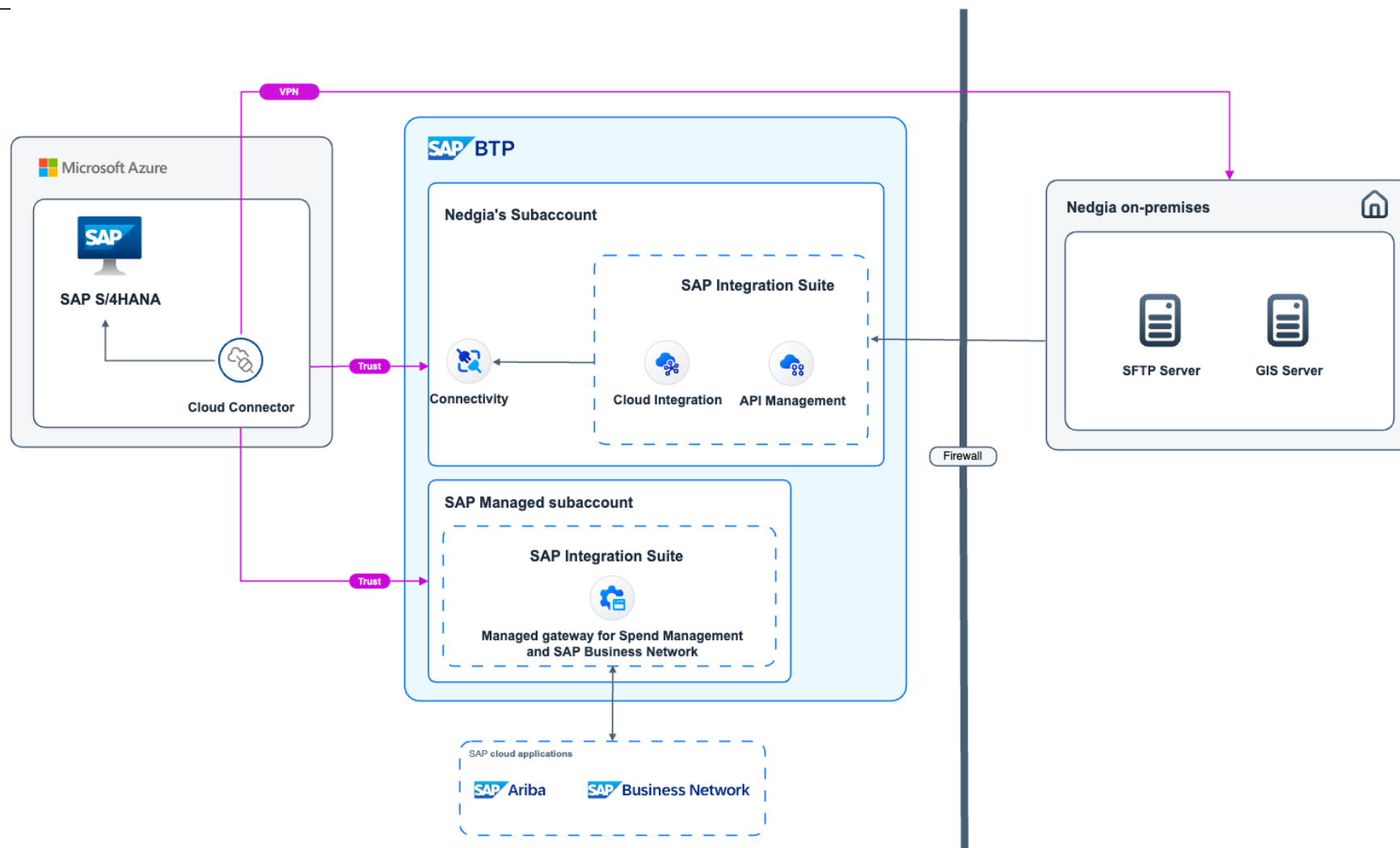
- Fully SAP-managed, multi-cloud integration platform
- Strong focus on security and infrastructure availability
- Compatible with SAP Process Orchestration\*
- A large ecosystem with partner-developed integration content & adapters
- Rich set of connectivity adapters for SAP to SAP and SAP to third-party applications integration, both in the cloud and on-premise
- Edge Integration Cell as an optional, customer-operated next-generation hybrid integration runtime within customer environments for local integrations



# Cloud Integration: *Multi-cloud*



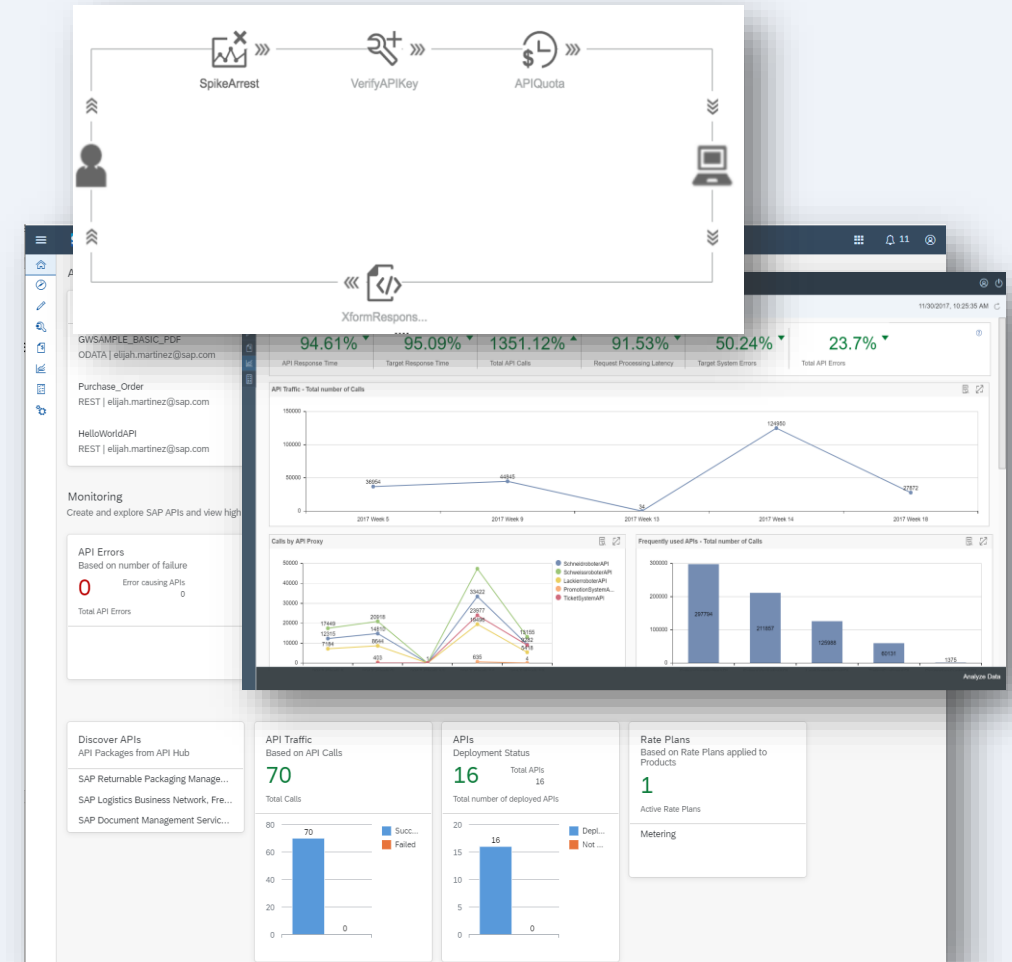
# Cloud Integration: *SAP and non-SAP*



# API Management

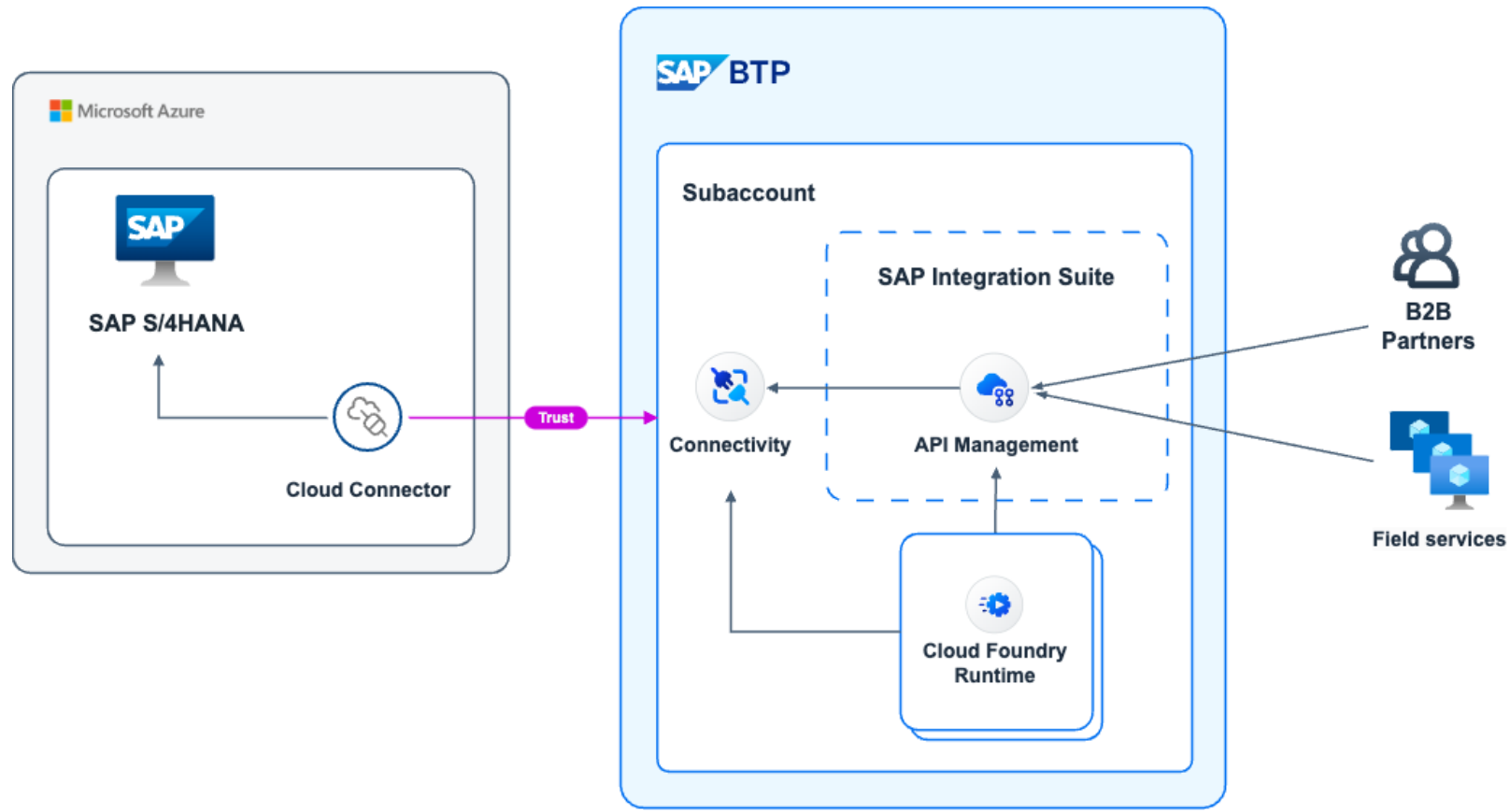
Provides your developer community with unified, secure, controlled and compliant access to the APIs of your digital assets.

- Standards-based API discovery of OpenAPI, REST, OData, GraphQL and SOAP services
- Enterprise-grade API security, validation, compliance and attack protection (DoS, CSRF, XSS...)
- Visual development of powerful custom API governance, security and mediation policies
- Creation and composition of data graphs, for use with GraphQL or OData
- Real-time insights, analytics and monitoring of API traffic, notifications of usage & errors





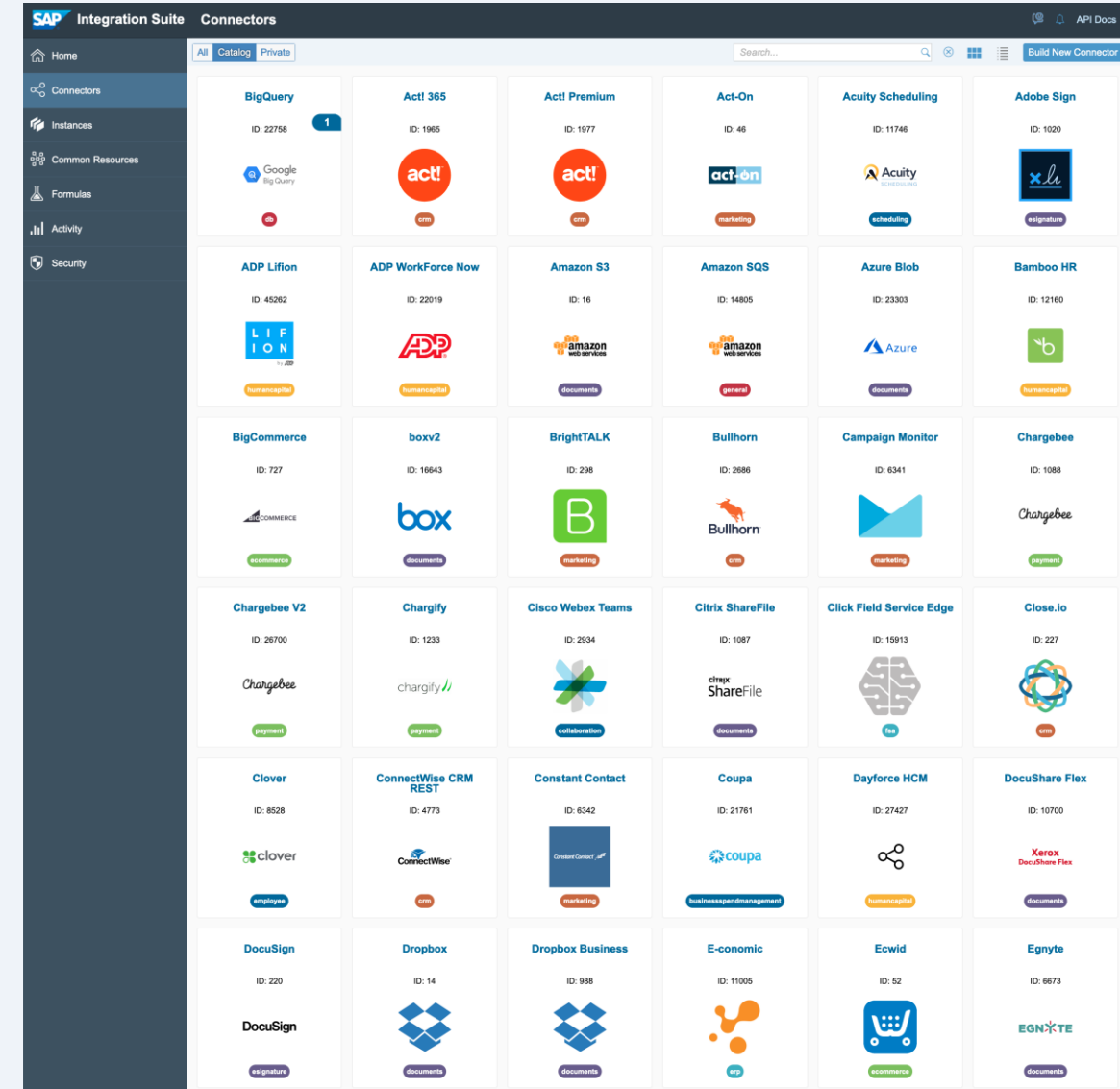
# API Management: *B2B API access*



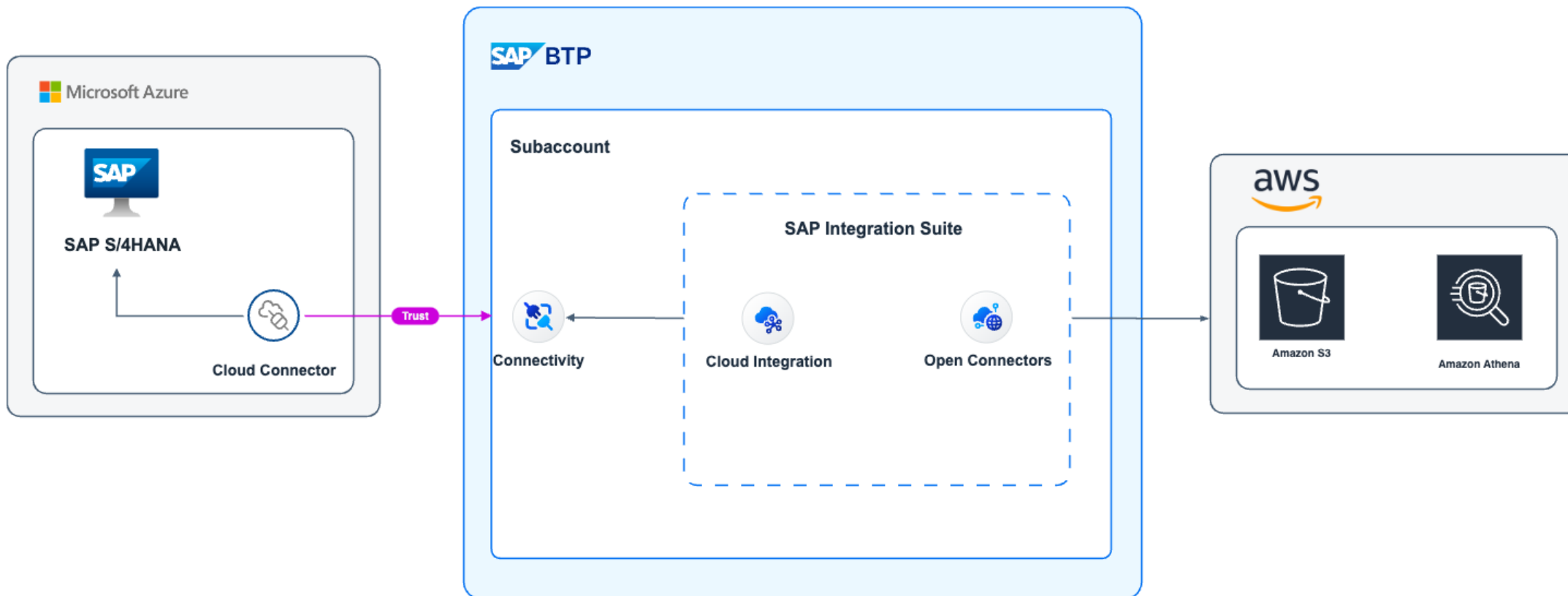
# Open Connectors

Simplifies connectivity to third-party apps by providing feature-rich, pre-built connectors to over 160 non-SAP cloud applications. It offers a comprehensive and seamless integration to third-party apps that work out of the box.

- Reduce time to connect
- Normalized authentication, error handling, search, eventing, and pagination via pre-built connectors.
- Consistent data model across one or more connectors into a normalized resource.
- RESTful APIs with built-in interactive API documentation



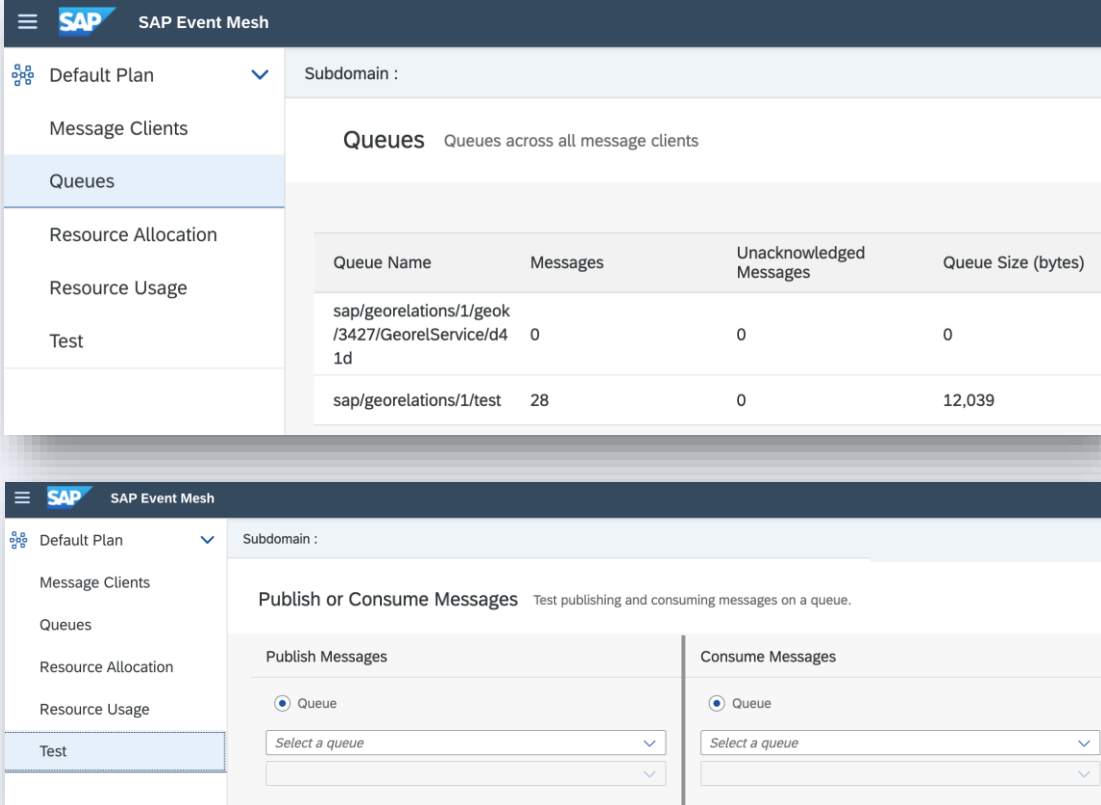
# Open Connectors: 3<sup>rd</sup> party APIs



# SAP Event Mesh

SAP Event Mesh is a fully-managed cloud service for enabling applications, integrations and extensions to communicate asynchronously through events.

- Event-Broker-as-a-Service decouples communication
- Business real-time updates on significant changes in business applications
- Share SAP events outside the core SAP ecosystem
- Loosely coupling business applications and infrastructure
- Openness and focus by supporting open standards while providing extra benefits for SAP's ecosystem



The image displays two screenshots of the SAP Event Mesh web interface. The top screenshot shows the 'Queues' section, which lists queues across all message clients. The bottom screenshot shows the 'Publish or Consume Messages' section, which allows users to test publishing and consuming messages on a queue.

**Queues** Queues across all message clients

Queue Name	Messages	Unacknowledged Messages	Queue Size (bytes)
sap/georelations/1/geok /3427/GeorelService/d4 1d	0	0	0
sap/georelations/1/test	28	0	12,039

**Publish or Consume Messages** Test publishing and consuming messages on a queue.

**Publish Messages**

☒ Queue

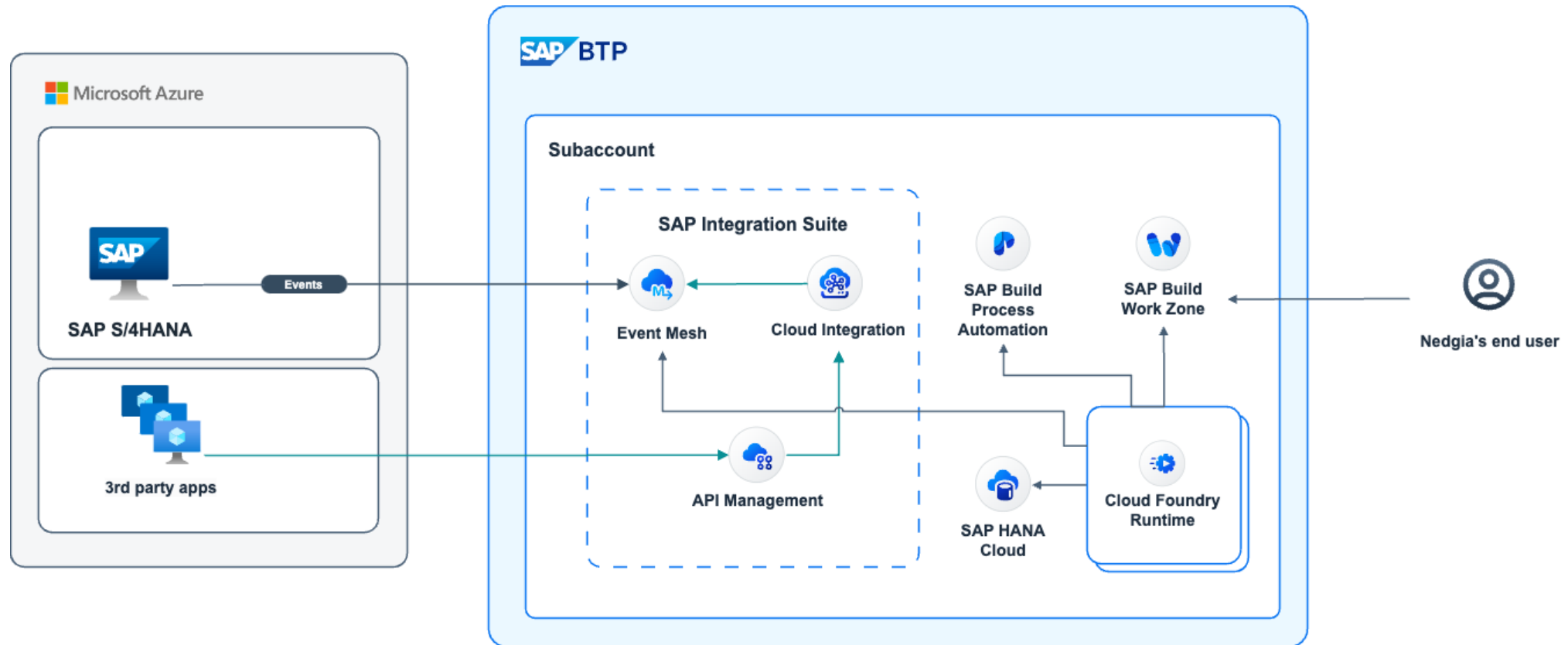
Select a queue

**Consume Messages**

☒ Queue

Select a queue

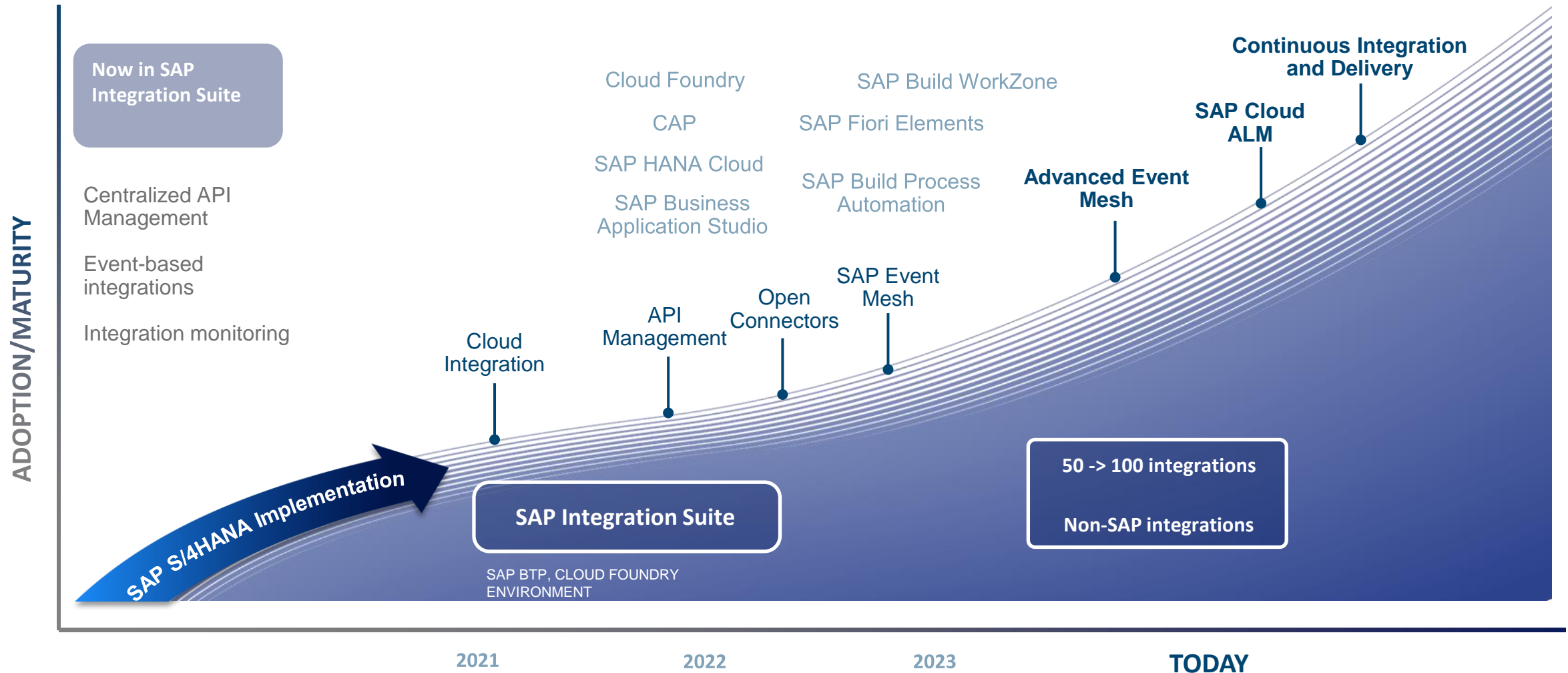
# SAP Event Mesh







# What's next in Nedgia's integration journey?



## How has SAP helped you on this journey?

---

The logo for SAP MaxAttention, featuring the text "SAP MaxAttention" in a bold, black, sans-serif font. The text is centered within a light blue rectangular background that has a darker blue diagonal stripe running from the top-left to the bottom-right.

**SAP MaxAttention**



# Migration tools and assessments

---

- It's all about the right mindset
- Edge Integration Cell
- SAP Migration Factory
- Migration Assessment
- Evolve Neo program



# How to approach integration modernization?

## Start with the right mindset and methodology

---



1



### THINK STRATEGICALLY

- Invest in standardized solutions that support you for the long haul
  - New projects on SAP Integration Suite
  - Stop investments on SAP PI/PO or SAP CPI on SAP BTP, Neo environment
- Do not assume "lift and shift" is your best option

2



### START SIMPLE

- Choose easy migration scenarios to gain experience
- Consider prebuilt integrations maintained by SAP ([api.sap.com](https://api.sap.com))
- Migrate simpler scenarios with least disruption to gain experience

3

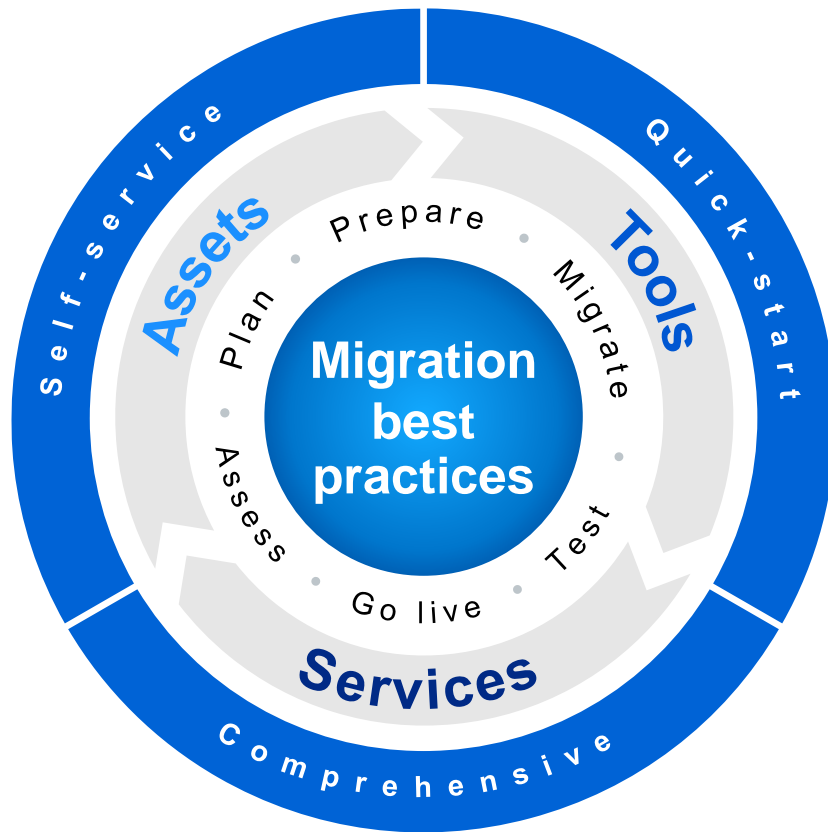


### SCALE CONFIDENTLY

- Approach more complex scenarios
  - Highly customized / code intensive
  - Ground-to-ground
  - Business-to-Business
  - Mission critical scenarios

# How to accelerate modernization outcomes and lower risks?

## Take advantage of assets, tools, and services from SAP & partners



### SELF-SERVICE HELP

- **Assessment tools** to evaluate your existing environment and estimate efforts
- **Tools to automate migration and testing** from SAP and partners
- **Migration guides, documentation, and community content** to guide you through the migration lifecycle
- **Pre-built integrations** maintained by SAP



### QUICK START PROGRAMS

- **SAP Migration Factory** – a **free** 2-3 week program to help assess and plan your migration from **SAP PI/PO** to **SAP Integration Suite**
- **Evolve Neo program** – **free** access to SAP experts who help you plan and prepare your migration to SAP Integration Suite on SAP BTP, **Cloud Foundry** environment
- **SAP Service and Support** offer SAP Integration Suite quick start and migration assistance with **short duration, low cost engagements**



### END-TO-END SERVICES

- **SAP Services** - tailored services across the entire migration lifecycle – **including implementation services**
- **SAP Premium Engagements** (e.g., SAP MaxAttention) offers a customizable deep dive **SAP PI/PO migration workshop** along with **proof-of-concept, health-check** and **on-call go-live** support services.

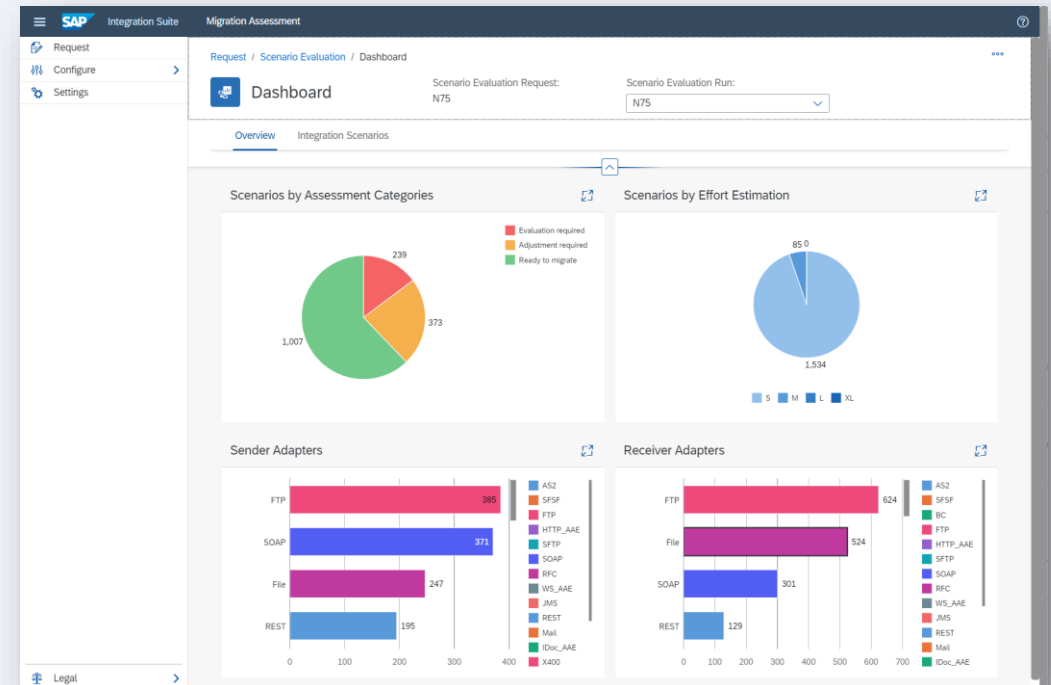
# Migration Assessment capability

## Transition to the cloud from SAP Process Orchestration



The Migration Assessment capability is a self-service tool that automatically analyses and assesses an on-premise SAP Process Orchestration system to be migrated to SAP Integration Suite.

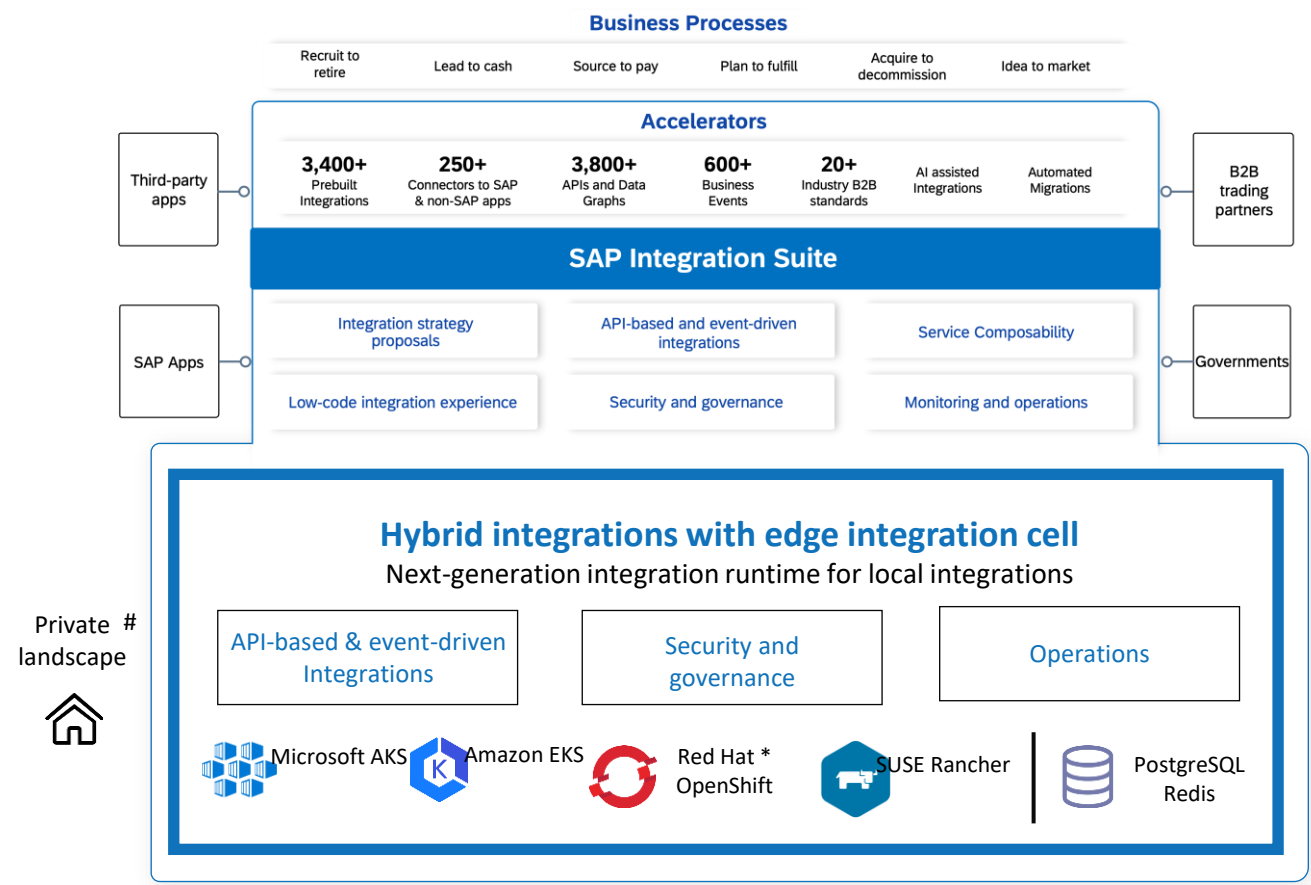
- Provides upfront transparency on estimated migration effort and costs
- Accelerates the migration process
- Analyses and assesses an SAP Process Orchestration system to be migrated to SAP Integration Suite
- Extracts integration scenarios from SAP Process Orchestration
- Evaluates integration scenarios based on flexible rules framework
- Estimates migration effort
- Complements the migration tool to semi-automatically migrate integration scenarios from SAP Process Orchestration to SAP Integration Suite based on integration flow templates





# Edge Integration Cell

## Next-generation “hybrid” integration runtime



## EDGE INTEGRATION CELL – WHY ?

Elevate the transformation journey for **SAP PIPO** Customers

Stickiness of **on-premise / private cloud** install base

Regulatory **Compliance**

Embrace the modern cloud with **hybrid** architecture

# Private landscape corresponds to on-premise or private cloud.

\* Part of the road map, beyond GA

# SAP Migration Factory

## Detailed Engagement Model



### Migration Assessment FREE

Transfer to Customer,  
SAP Services or Partner

### Migration Execution PAID

#### STEP 1: Define Scope (Capture Information & Analyze)

1-2 WEEKS

##### Information / Access Required

- Migration Questionnaire
- Review as-is architecture & landscape (including interfaces and applications)
- Run automated assessment utility to assess current environment (v. 7.5 SP06 and higher)
- Access to current environment (optional)\*

##### Access to Customer SME

- 2-to-3 (1 hr.) technical call's with customer

#### STEP 2: Migration Plan (Approved by Customer)

1 WEEK

##### Review and Approve

- Migration Scope (inventory of integrations; SAP & non-SAP)
- Migration Roadmap (Dev/QA/Production cutover)
- Migration Plan (timeline, effort)

##### SAP Integration Suite Education

- Migration Benefits & IS Education

#### STEP 3: Migration Prep & Execution

##### Migration Execution

- Ramp-up customer: SAP Integration Suite
- Prepare environment (Dev/QA/Prod)
- Migrate artifacts
- Test & adjust migration
- Go-live
  - Configure production integration/apps
  - Monitor for issues
  - Final enablement/sign-off by customer

Create Project Plan

Engage: [migrationfactory.integration@sap.com](mailto:migrationfactory.integration@sap.com) to get started

\*The automated assessment utility can be run by the customer to extract metadata used by SAP to automate the assessment of existing artifacts in the PI/PO system. Typically, an online meeting to review the more complex scenarios with the customer is all that's required.

# Evolve Neo program

Migrate your Neo implementation to a modern, multi-cloud foundation

## Four easy steps to help you succeed in your modernization journey

1

**One-hour kick off call** to go over an overview of the program and migration process

2



**An SAP BTP expert for two weeks:**

1. Analyses your Neo services – including your apps, configurations, and security settings
2. Develops a migration roadmap detailing system scope and migration journey

3

**One-hour call to review the migration roadmap** and discuss next steps with your team

4

**Checkpoint Calls every 2 – 4 weeks** with SAP BTP experts to address your migration-related questions

### Prerequisites

- Program open to CPEA and subscription customers only
- Must have active SAP BTP, Neo environment subaccounts
- Must grant SAP access to subaccounts to be analysed for migration

### Get started today!

Contact: [sap.btp.migration@sap.com](mailto:sap.btp.migration@sap.com)

# SAP Partner offerings

## Automated Integration Testing



### CAPABILITIES

- Automatically create and execute test cases
- Automatically capture messages from productive landscapes using Int4 Robotic Crawler
- Simulating 3<sup>rd</sup> party systems and B2B partners with captured messages
- Validate message routing, mapping, and translation
- Audit test quality
- Scale to millions of test cases
- SAP certified ABAP add-on; whitelisted for SAP Private Cloud (SAP\_BASIS & SAP\_ABA 7.40; Fiori UI Optional SAP\_UI 7.54 SP02 See [SAP Note 2796241](#))



Available on  
**SAP Store**



### Figaf Migration Edition

### CAPABILITIES

- Automatically generate test scripts & creation of test data
- Advanced testing capabilities like
  - Mocking endpoints
  - Ensuring compliance with confidential data sets
- SAP PI/PO migration process management & automation
  - Complete migration status overview
  - Generate test data from SAP PI/PO & compare results
  - Migrate/test from SAP PI/PO 7.1 to 7.5
- Built on SAP BTP (Cloud Foundry)
- 12 months FREE usage of testing tools for migration purposes
- 2 months FREE trial of full DevOps Suite with migration tools
- Runs on customer SAP BTP or Desktop (Java JRE 8+; PostgreSQL 11+)



Available on  
**SAP Store**

# Key Points to Take Home

---

- **Future-proof** your **investments** and move to multi-cloud
- Think strategically – “**Lift-N-Transform**”
- Start **Simple** and Scale **Confidently**
- Take advantage of **Evolve Neo** and **Migration Factory**. Free programs
- SAP Integration Suite: Versatile, Hybrid and Enterprise-Grade integration platform.



# Thank you! Any Questions?

---

Antonio Maradiaga: [antonio.maradiaga@sap.com](mailto:antonio.maradiaga@sap.com)

Stefano Passaro: [spassaro@nedgia.es](mailto:spassaro@nedgia.es)

Please remember to  
complete your session  
evaluation.





## SAPinsider.org

PO Box 982Hampstead, NH 03841  
Copyright © 2024 Wellesley Information Services.  
All rights reserved.

SAP and other SAP products and services mentioned herein as well as their respective logos are trademarks or registered trademarks of SAP SE (or an SAP affiliate company) in Germany and other countries. All other product and service names mentioned are the trademarks of their respective companies. Wellesley Information Services is neither owned nor controlled by SAP SE.

---

**SAPinsider  
comprises the  
largest and fastest  
growing SAP  
membership group  
with more than  
800,000 members  
worldwide.**

---

---

[Integration Suite \(ondemand.com\)](#)

EIC: <https://cpisuite-us-07.integrationsuite.cfapps.us10.hana.ondemand.com/s/hell/home>