



Demystify SAP Integration Suite

Antonio Maradiaga, Developer Advocate, SAP

Barcelona

2024

SAPinsider



In This Session

In this session, you will learn about the fundamental components of SAP Integration Suite, we will explore the versatile capabilities of the platform and learn practical strategies and best practices for implementing SAP Integration Suite within your organization.

What We'll Cover

- SAP Integration Suite
- SAP Business Accelerator Hub
- SAP BTP Connectivity
- Capabilities
- Demonstration



SAP Integration Suite

SAP Integration Suite is an open and modular iPaaS supporting your enterprise-wide integration needs for both SAP and non-SAP integration scenarios.

SAP's Investment in Integration

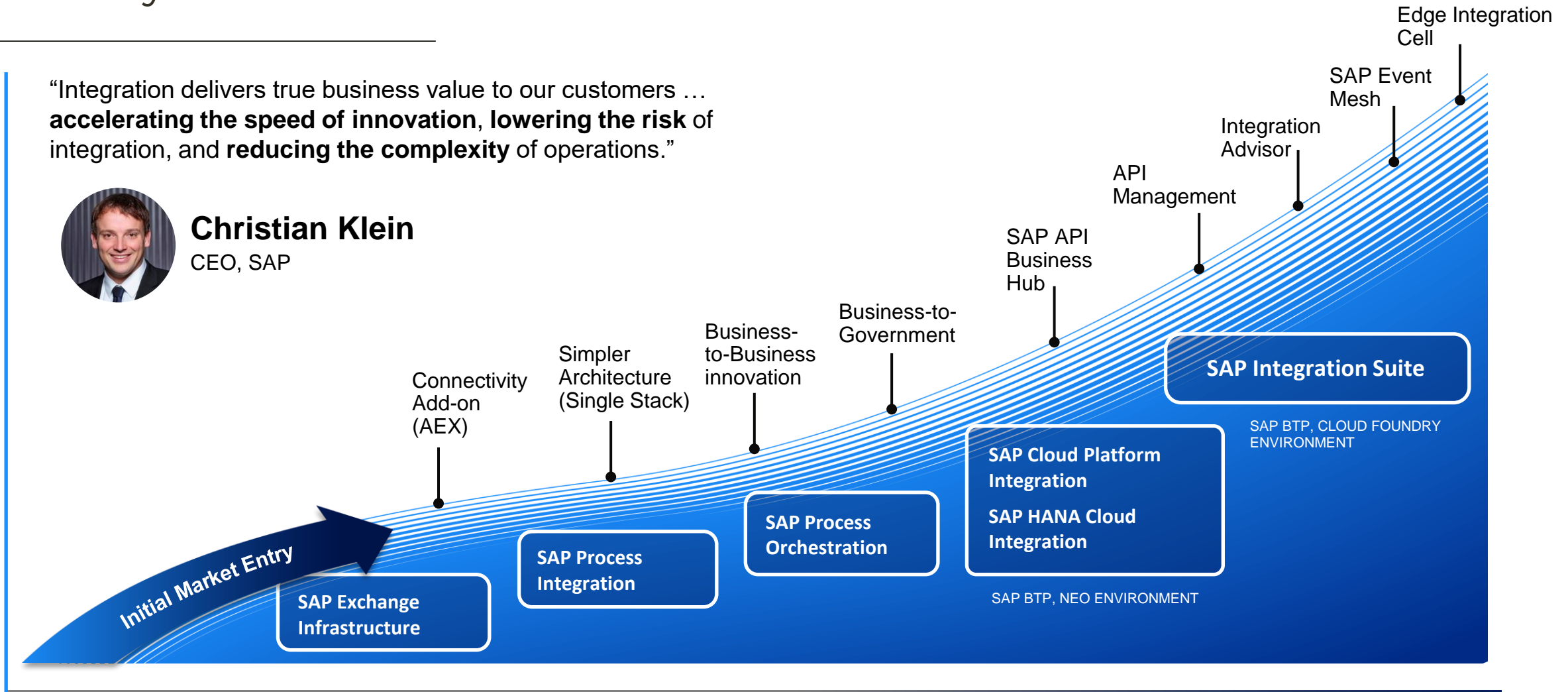
A history of continuous innovation

"Integration delivers true business value to our customers ...
accelerating the speed of innovation, **lowering the risk of**
integration, and **reducing the complexity** of operations."



Christian Klein
CEO, SAP

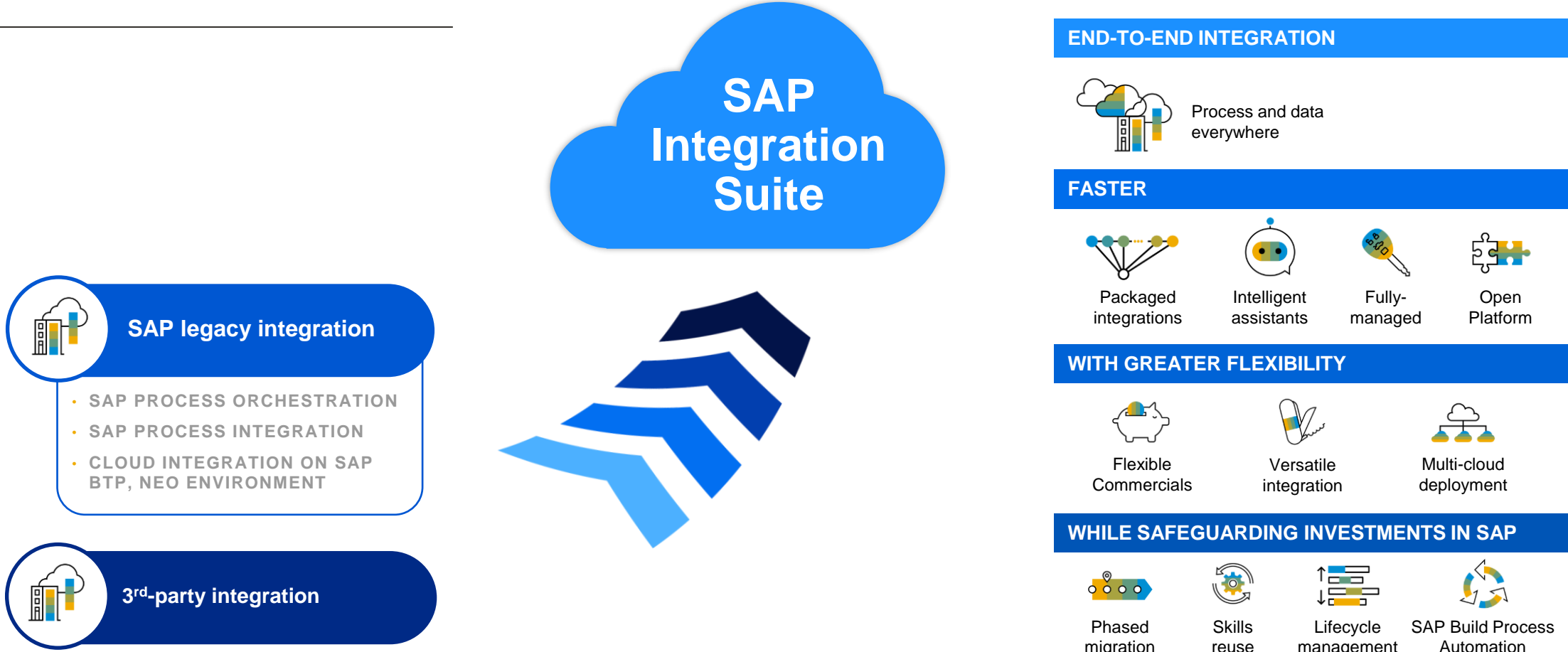
CUSTOMER VALUE



2003

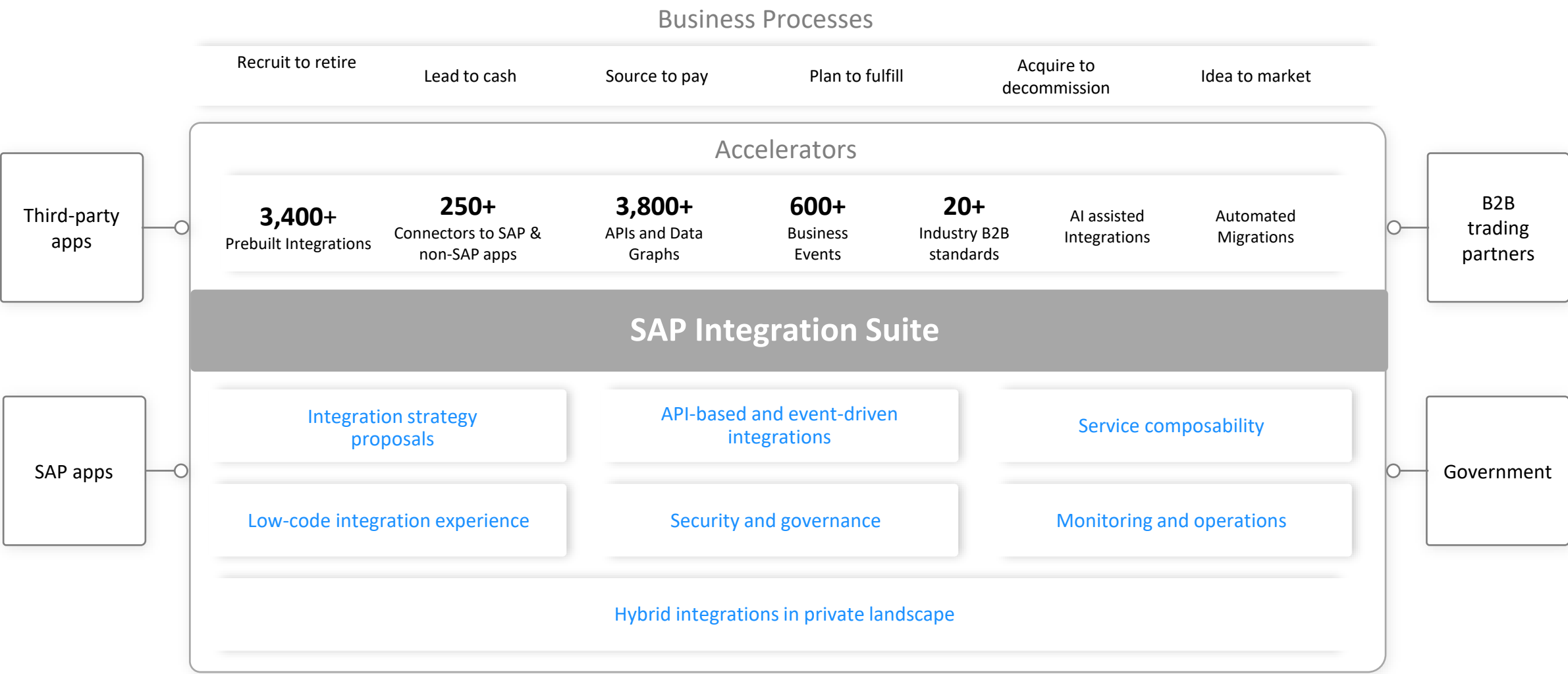
TODAY

Modernize integration to power your transformation journey

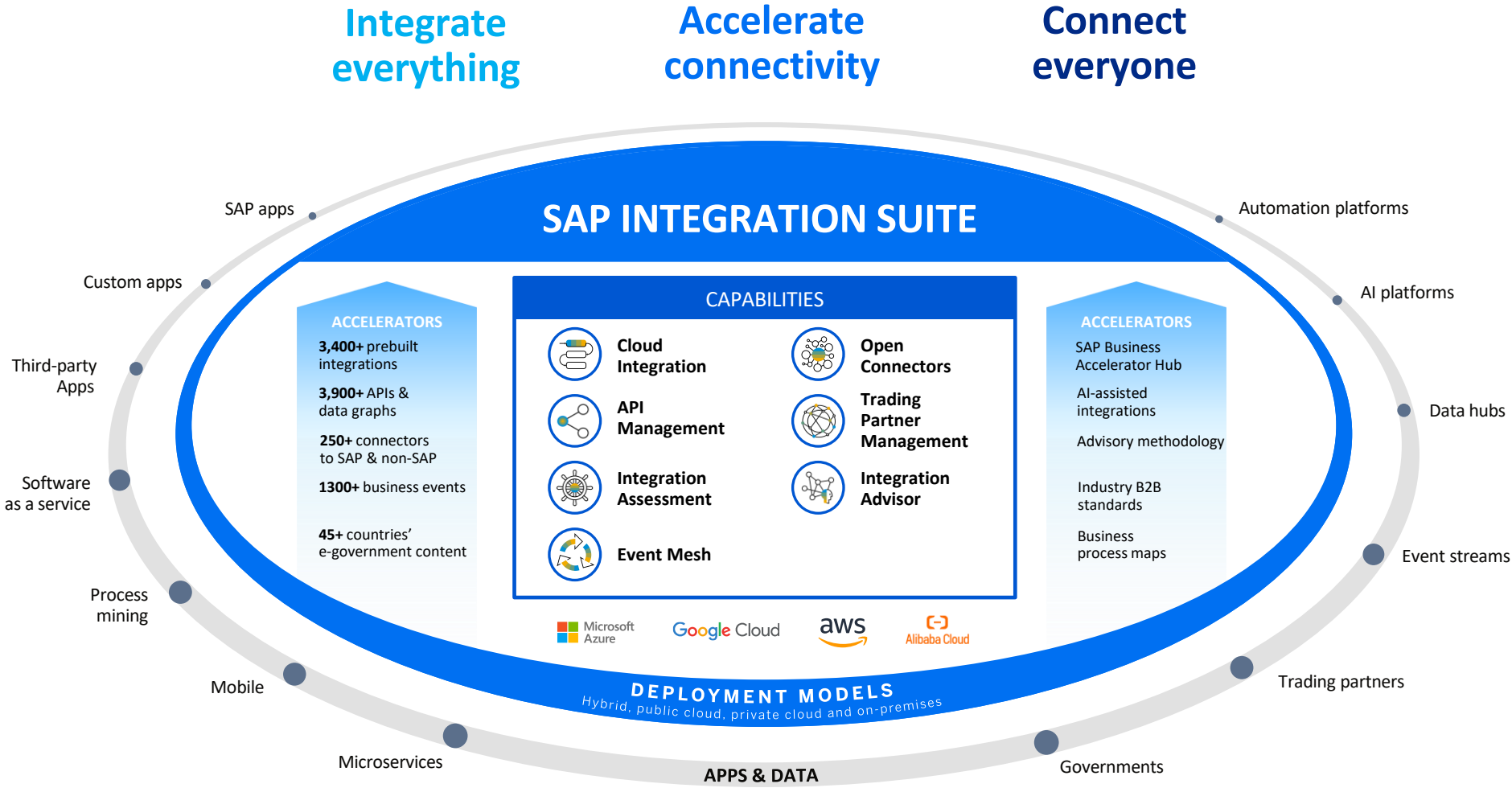


Simplify and consolidate integration to achieve end-to-end-processes faster at a lower TCO

Modernize and innovate with SAP Integration Suite



SAP Integration Suite: Integrate everything to innovate now

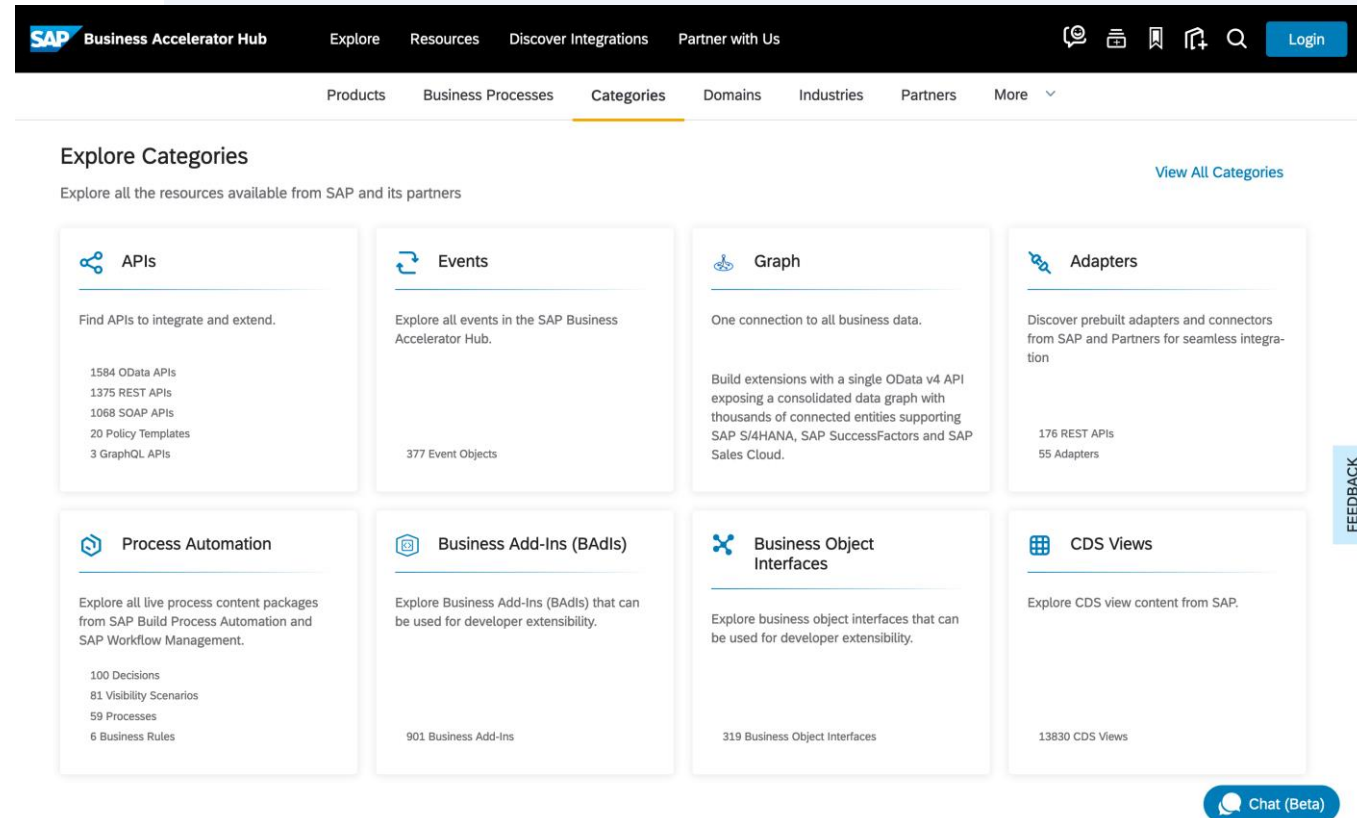


SAP Business Accelerator Hub

- Pre-packaged content
- Best practices

SAP Business Accelerator Hub

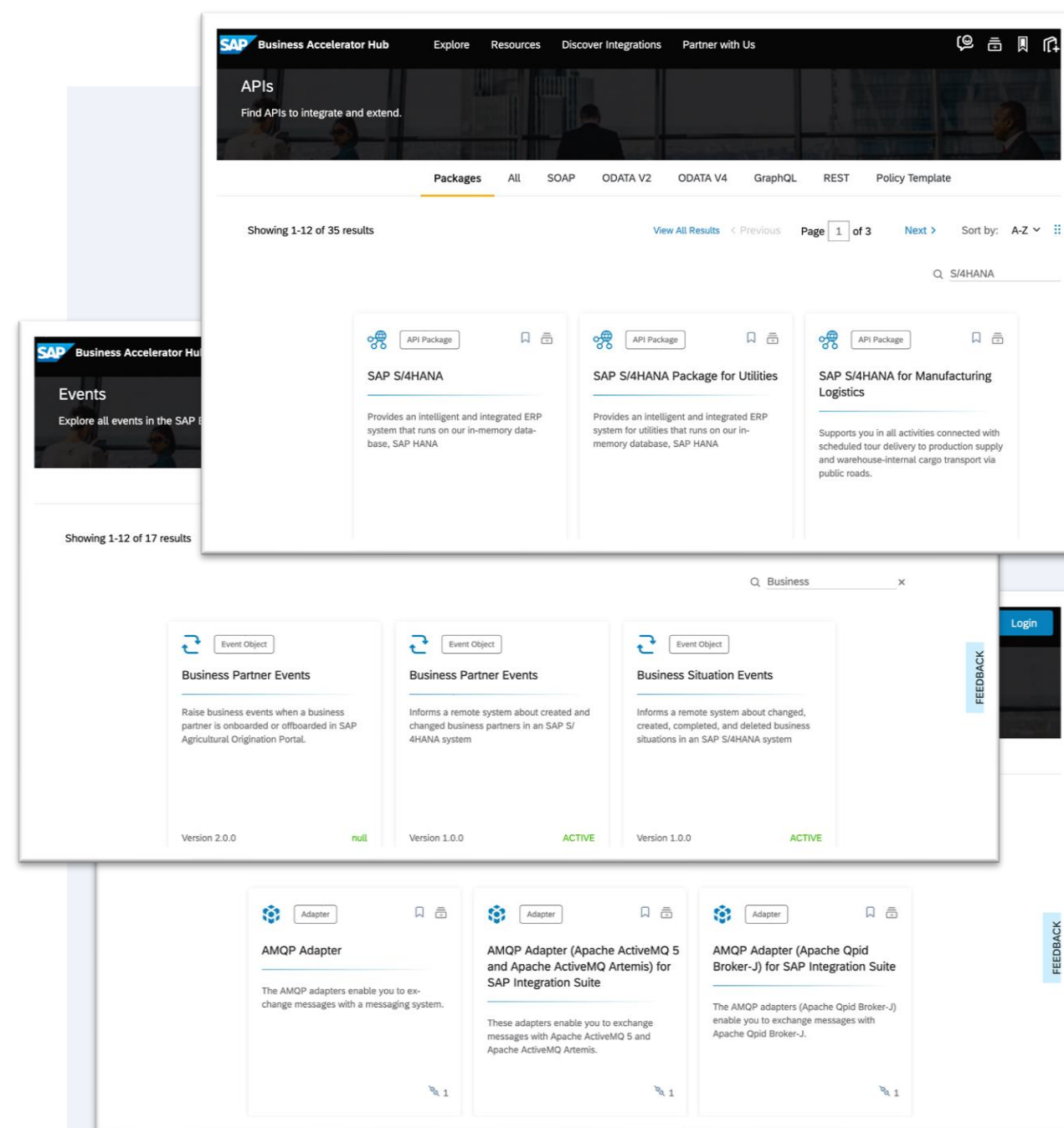
Discover integrations between SAP products as well as between SAP products and third-party products. Explore different products, categories, business processes, partners, featured APIs, integrations, and more.



SAP Business Accelerator Hub

- Discover content seamlessly to fit all your integration and extension needs.
- Explore different products, categories, business processes, partners, featured APIs, integrations, and more.
- Discover integrations between SAP products as well as between SAP products and third-party products.
- Use workspaces to start working on your content right away.
- Test APIs in both sandbox and configured systems.

3,400+	250+	3,800+	600+
Prebuilt Integrations	Connectors to SAP & non-SAP apps	APIs and Data Graphs	Business Events



SAP BTP Connectivity

- SAP BTP Connectivity service
 - Cloud Connector

SAP BTP Connectivity

SAP BTP Connectivity allows cloud applications running on the SAP BTP to access remote services securely that run on the **Internet** or **on-premise**.



INTERNET SERVICES

Consume APIs and data from
APIs and data provided by any
Internet service via HTTP(s)
using **destinations**



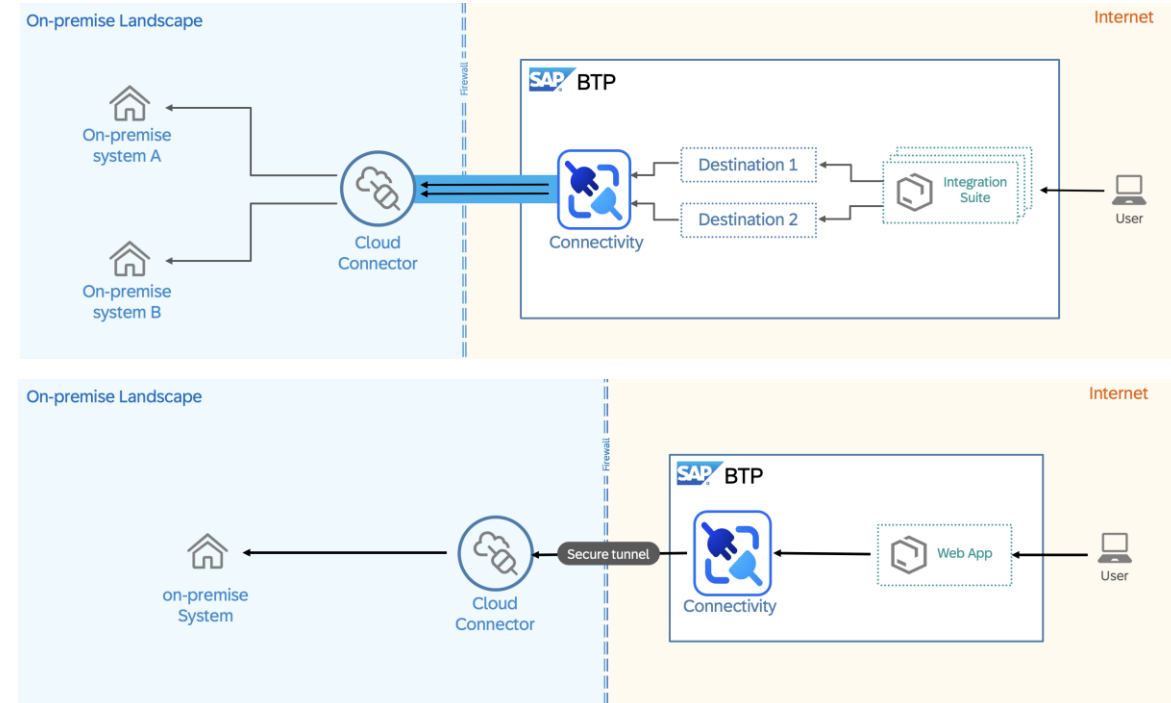
ON-PREMISE SYSTEMS

Consume APIs, data and users
provided by on-premise systems via
HTTP, RFC, or even with TCP using
destinations and the **Cloud
Connector**

Cloud Connector



Consume APIs, data and users provided by on-premise systems via HTTP, RFC, or even TCP using BTP destinations and the Cloud Connector.

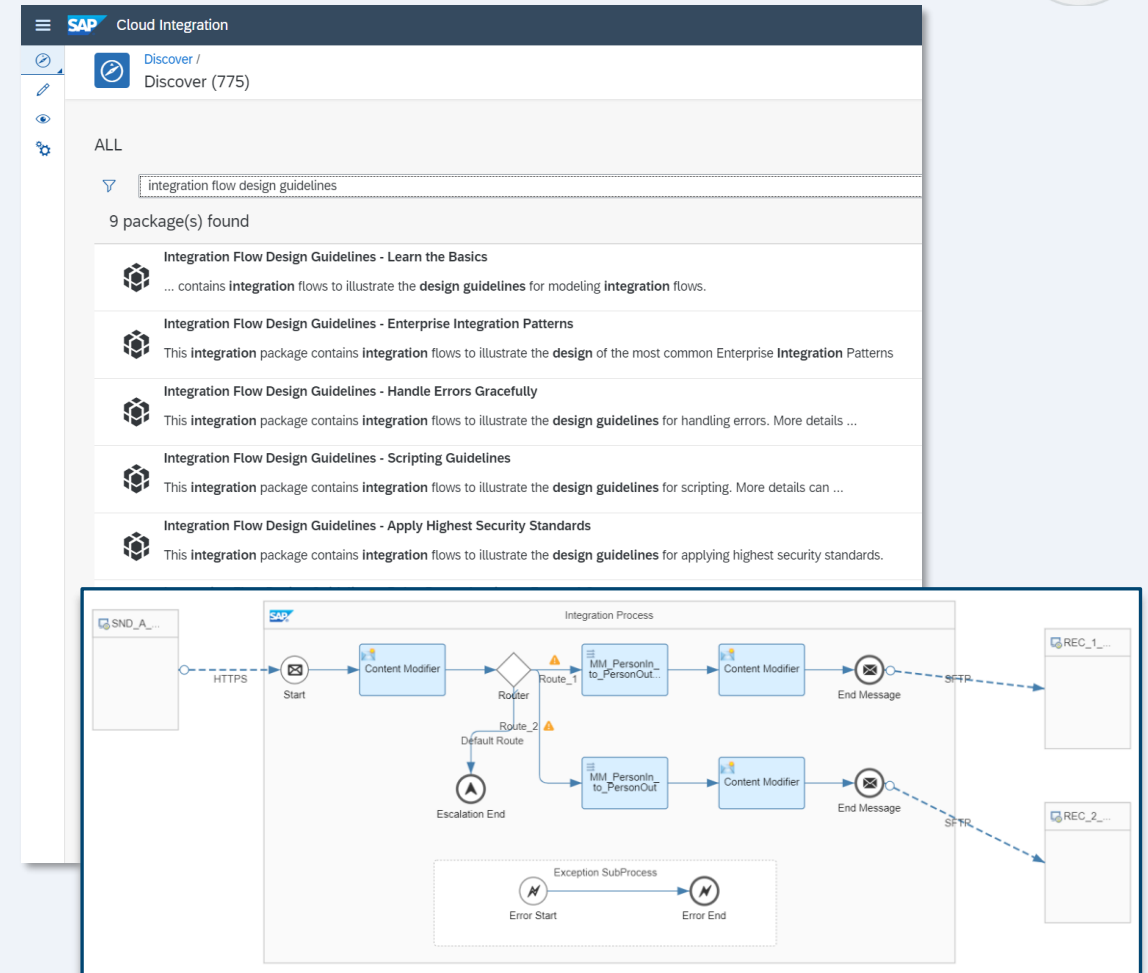


Capabilities

- Cloud Integration
- API Management
- Open Connectors
- SAP Event Mesh
- SAP Integration Suite, advanced event mesh
- Integration Assessment
- Integration Advisor & Trading Partner Management
- Migration Assessment

Cloud Integration

Fully SAP-managed, multi-cloud integration platform that enables the integration of data, processes, applications and business networks in your company.

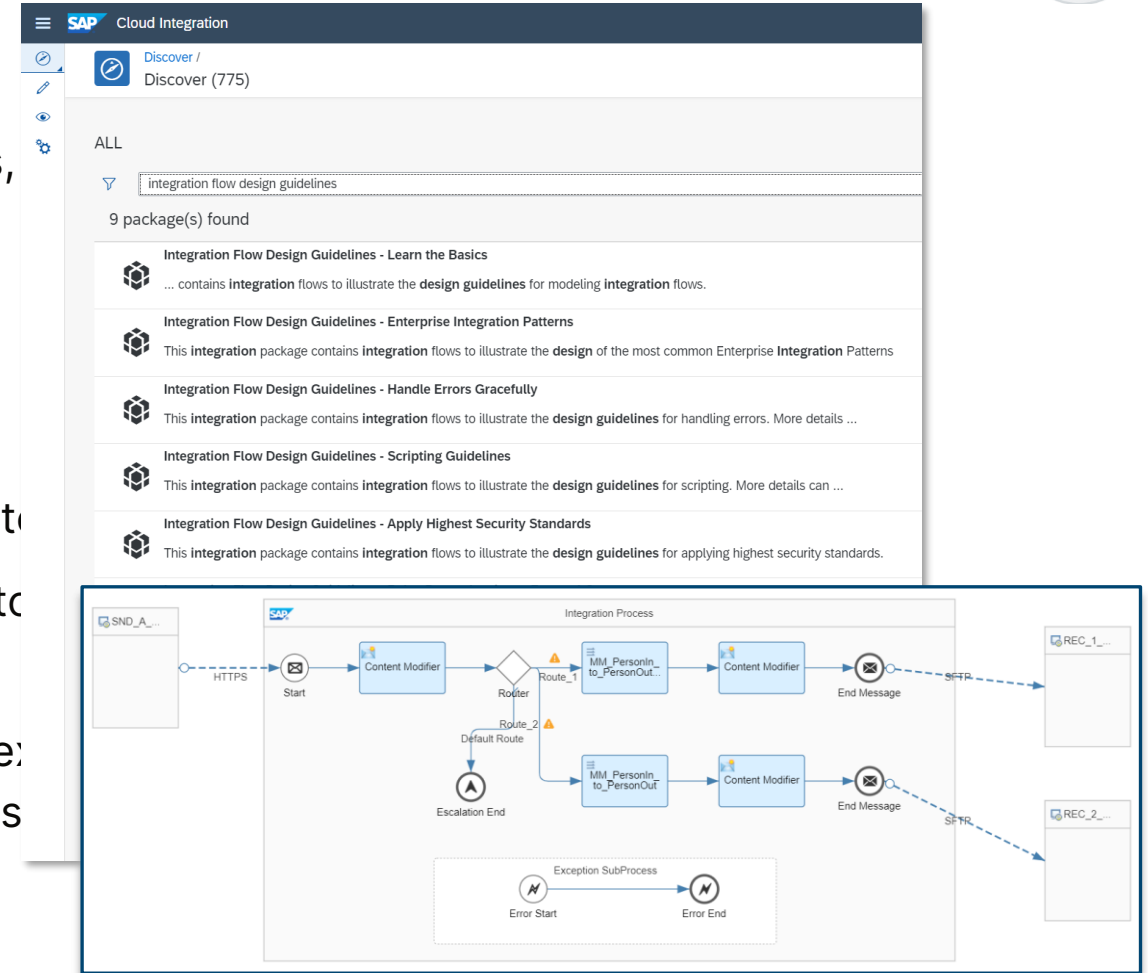


Cloud Integration



Simplifies and accelerates the integration of data, processes, companies achieve faster business outcomes.

- Fully SAP-managed, multi-cloud integration platform
- Strong focus on security and infrastructure availability
- Compatible with SAP Process Orchestration*
- A large ecosystem with partner-developed integration content
- Rich set of connectivity adapters for SAP to SAP and SAP to the cloud and on-premise
- Edge Integration Cell as an optional, customer-operated near runtime within customer environments for local integrations



Cloud Integration



Open spec connector

- HTTP, HTTPS (incl. REST), SOAP
- FTP(S), SFTP
- Mail (SMTP, IMAP, POP3)
- OData V2 & V4
- IDoc, RFC, XI
- AMQP, JMS, AS2, AS4
- Kafka
- JDBC, LDAP

Connectors to SAP & third-party apps

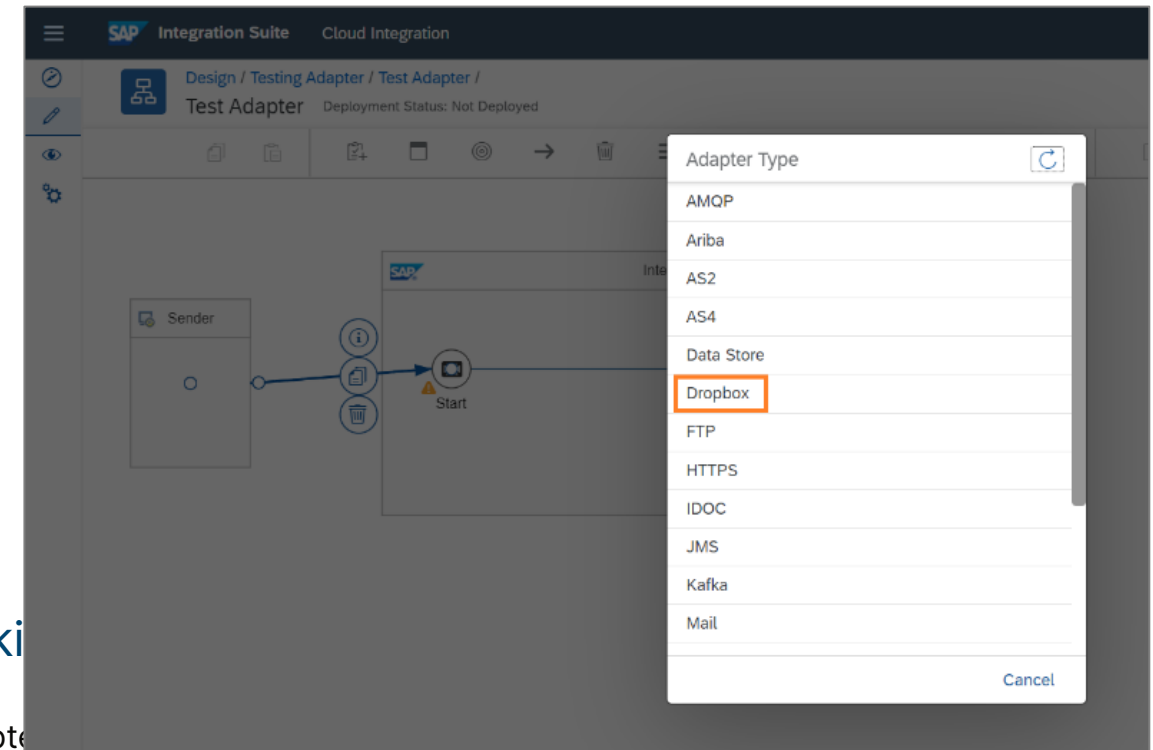
- SuccessFactors, Ariba
- AWS (S3, SQS, SNS, SWF)
- Microsoft Dynamics, Microsoft Storage
- Salesforce
- Workday, ServiceNow
- Dropbox, Slack, Splunk, Microsoft Azure Storage, Microsoft SharePoint, RabbitMQ, MDI
- Twitter, Facebook
- SugarCRM
- Elster*

Open connectors to 3rd-party

- Cloud storage
- Collaboration
- CRM
- ECommerce
- ERP
- eSignature
- HCM
- Field services
- Finance
- Help desk
- Messaging
- Payments
- Social
- ...

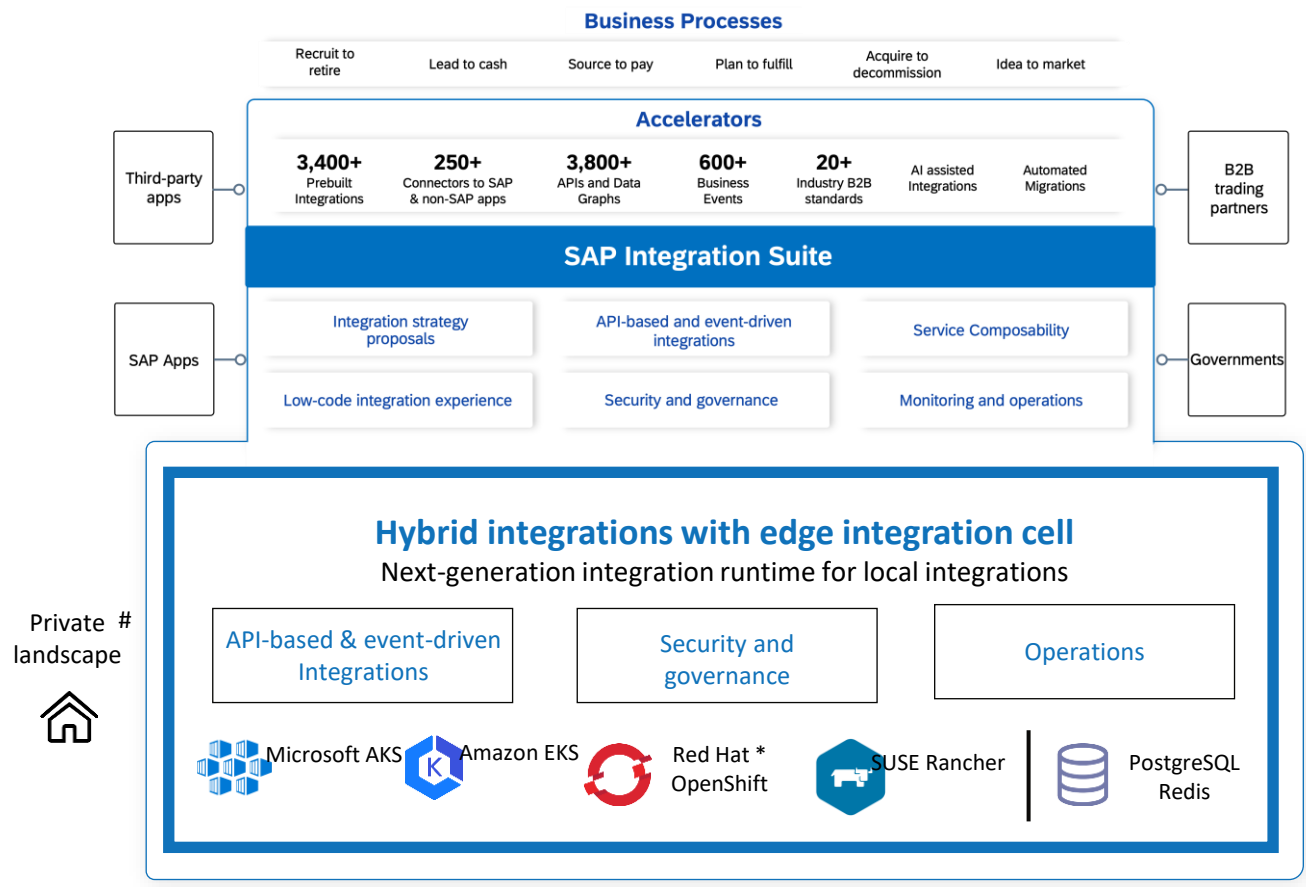
Adapter development kit

- [Framework](#) to create new adapters
- [Certification](#) available



Edge Integration Cell

Next-generation “hybrid” integration runtime



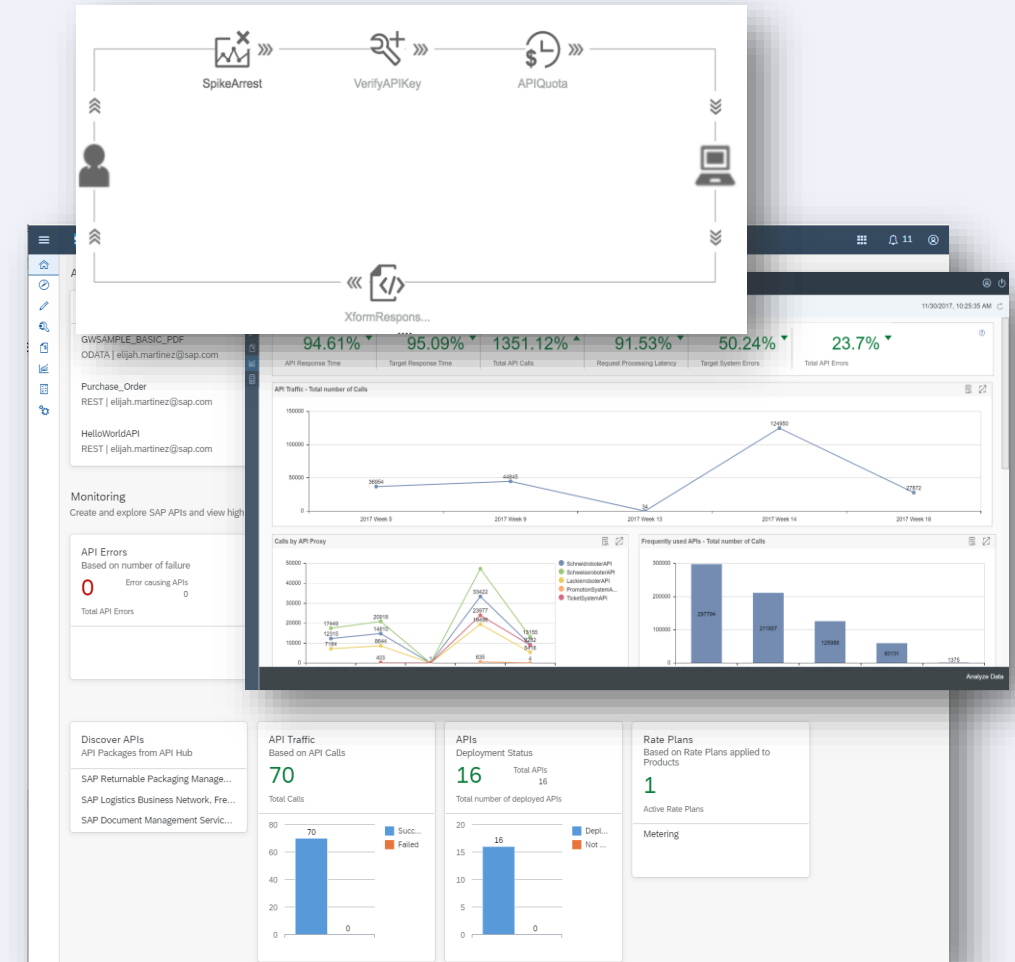
EDGE INTEGRATION CELL – WHY ?

- Elevate the transformation journey for **SAP PIPO** Customers
- Stickiness of **on-premise / private cloud** install base
- Regulatory **Compliance**
- Embrace the modern cloud with **hybrid** architecture

Private landscape corresponds to on-premise or private cloud.
* Part of the road map, beyond GA

API Management

Provides unified, secure, controlled and compliant access to the APIs of your digital assets + real-time insights into API traffic.

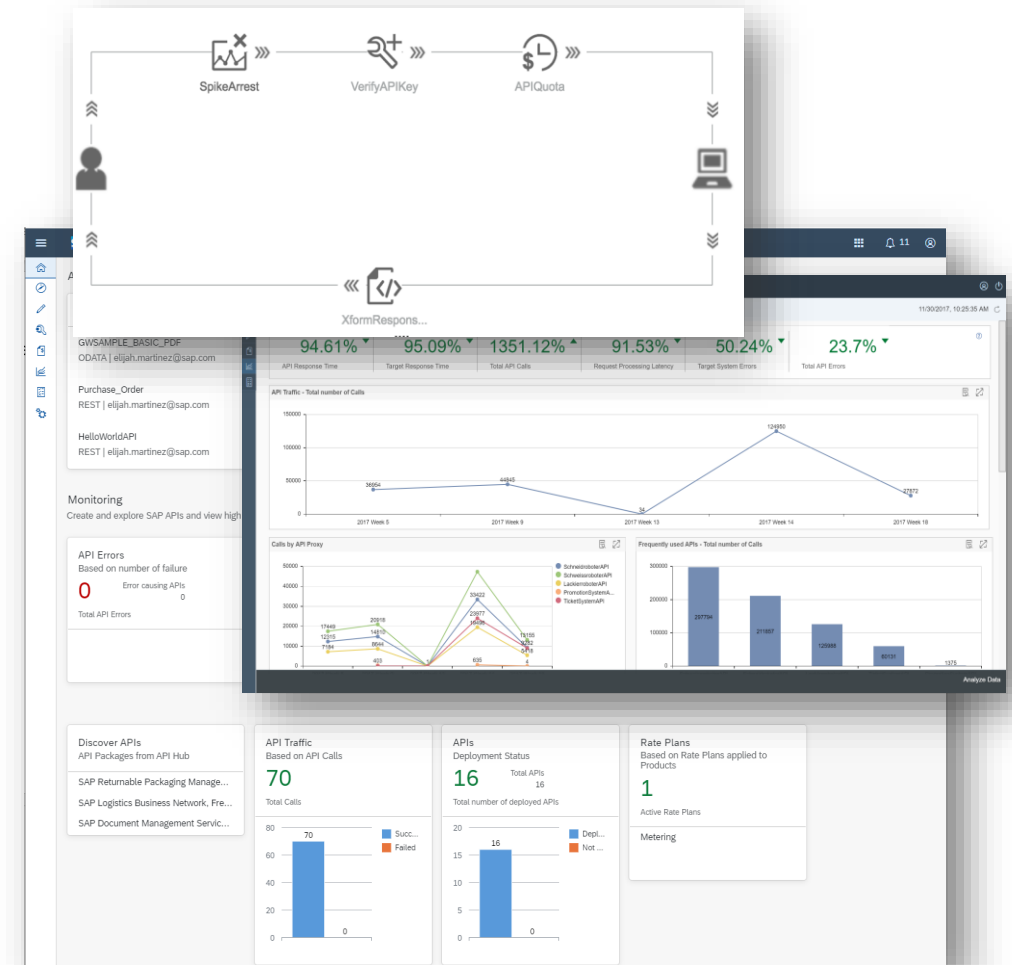


API Management



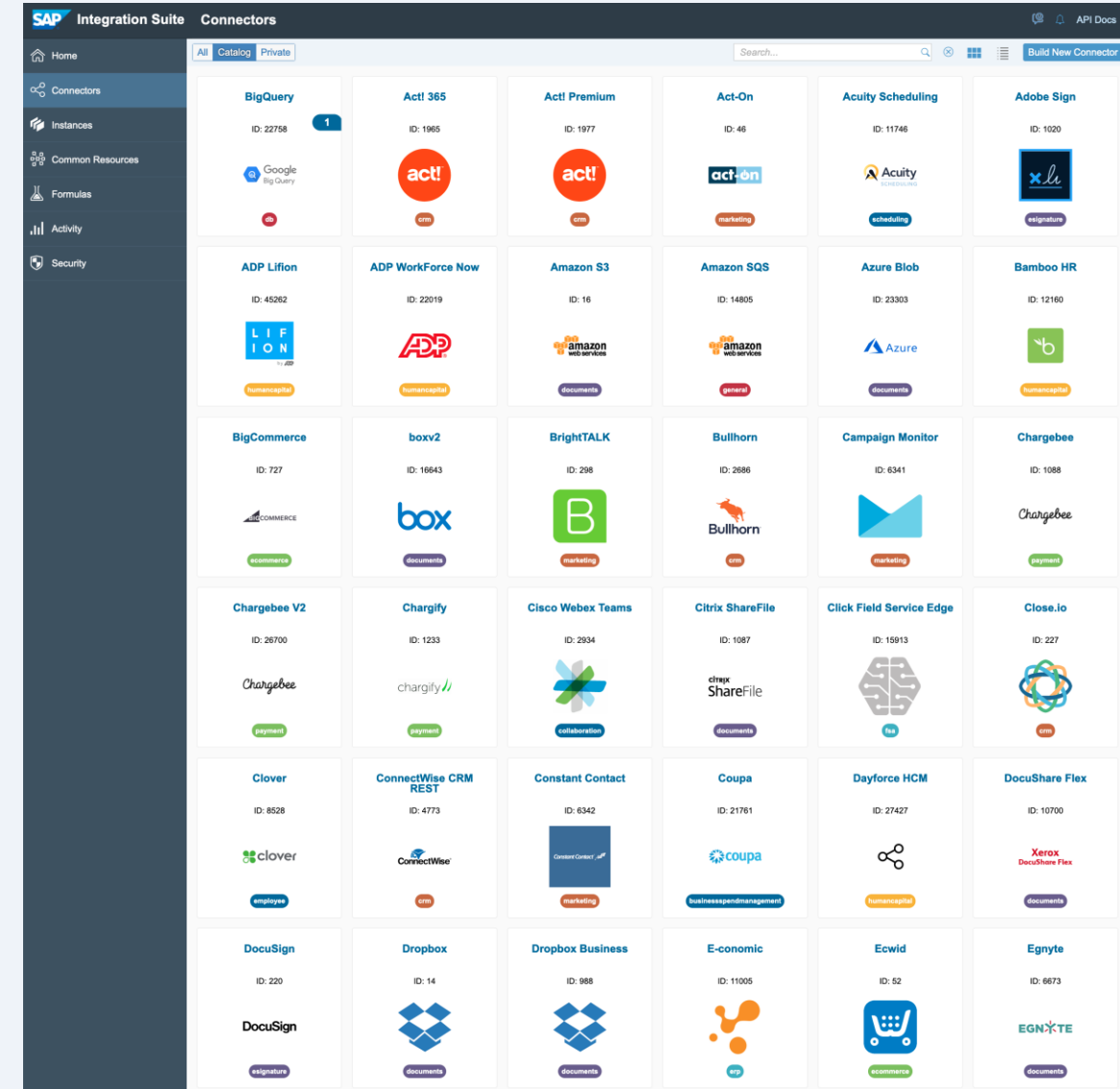
Provides your developer community with unified, secure, controlled and compliant access to the APIs of your digital assets.

- Standards-based API discovery of OpenAPI, REST, OData, GraphQL and SOAP services
- Enterprise-grade API security, validation, compliance and attack protection (DoS, CSRF, XSS...)
- Visual development of powerful custom API governance, security and mediation policies
- Creation and composition of data graphs, for use with GraphQL or OData
- Real-time insights, analytics and monitoring of API traffic, notifications of usage & errors



Open Connectors

Simplifies connectivity to third-party apps by providing pre-built connectors to over 160 non-SAP cloud applications.

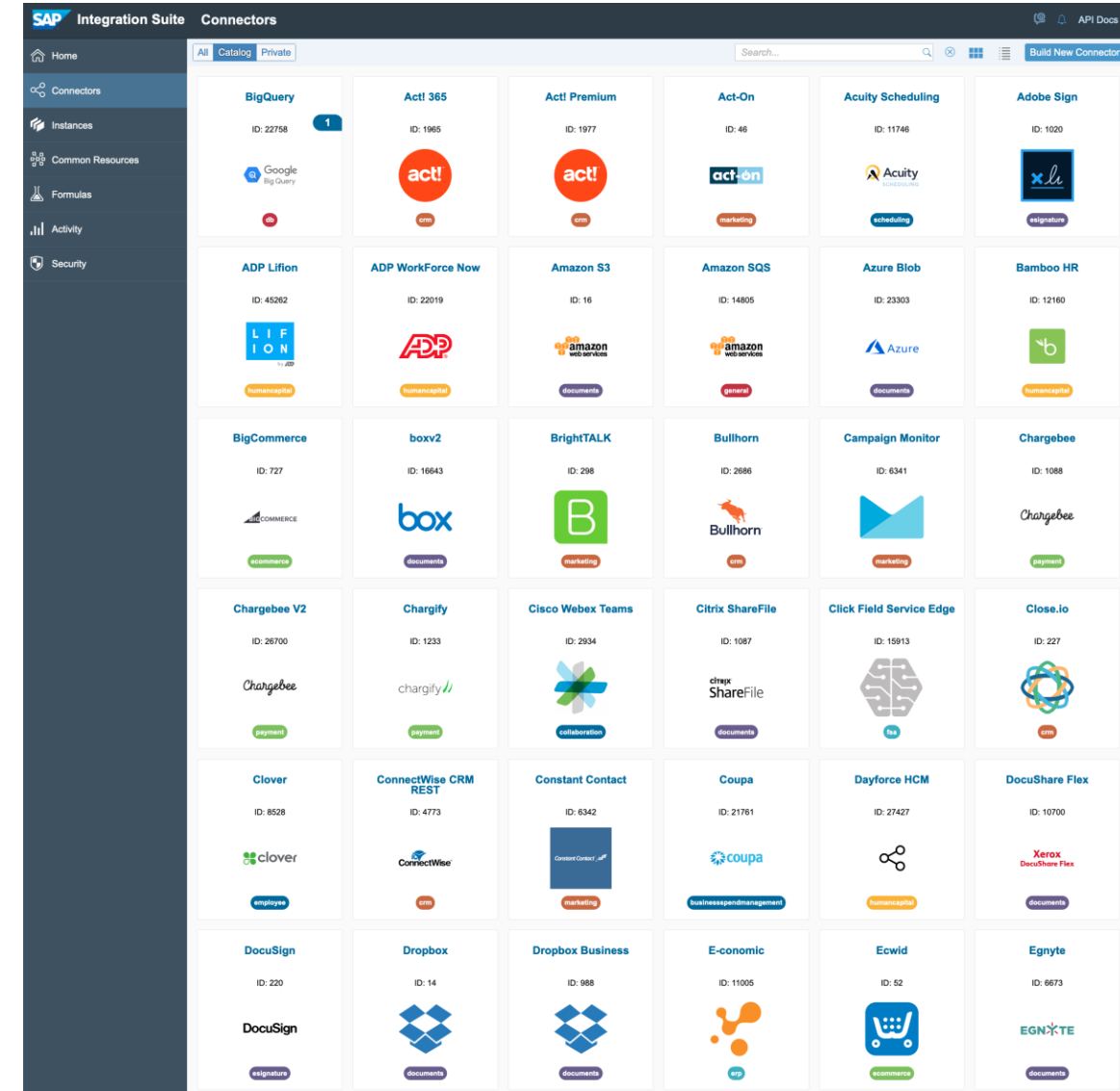


Open Connectors



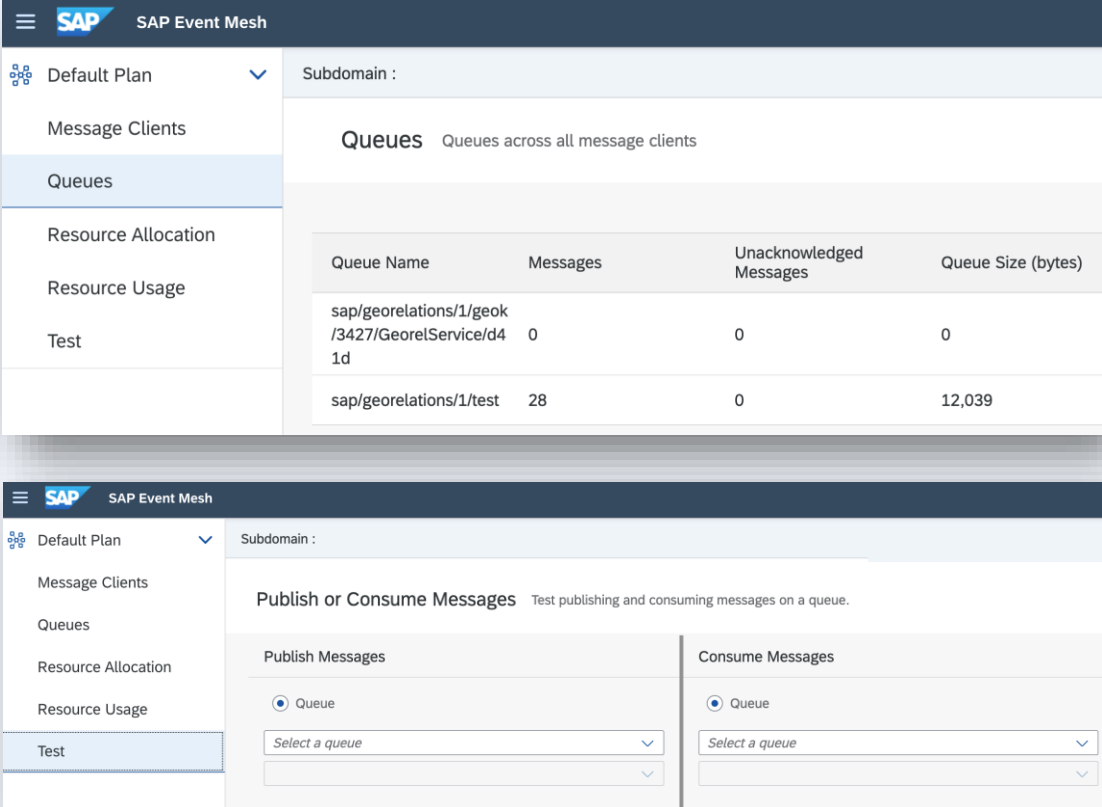
Simplifies connectivity to third-party apps by providing feature-rich, pre-built connectors to over 160 non-SAP cloud applications. It offers a comprehensive and seamless integration to third-party apps that work out of the box.

- Reduce time to connect
- Normalized authentication, error handling, search, eventing, and pagination via pre-built connectors.
- Consistent data model across one or more connectors into a normalized resource.
- RESTful APIs with built-in interactive API documentation



SAP Event Mesh

Fully-managed cloud service for enabling applications, integrations and extensions to communicate asynchronously through events.



The image displays two screenshots of the SAP Event Mesh user interface. The top screenshot shows the 'Queues' section, which lists queues across all message clients. The bottom screenshot shows the 'Publish or Consume Messages' section, which allows users to test publishing and consuming messages on a queue.

Queues Queues across all message clients

Queue Name	Messages	Unacknowledged Messages	Queue Size (bytes)
sap/georelations/1/geok/3427/GeorelService/d41d	0	0	0
sap/georelations/1/test	28	0	12,039

Publish or Consume Messages Test publishing and consuming messages on a queue.

Publish Messages

☒ Queue

Select a queue

Consume Messages

☒ Queue

Select a queue

SAP Event Mesh



SAP Event Mesh is a fully-managed cloud service for enabling applications, integrations and extensions to communicate asynchronously through events.

- Event-Broker-as-a-Service decouples communication
- Business real-time updates on significant changes in business applications
- Share SAP events outside the core SAP ecosystem
- Loosely coupling business applications and infrastructure
- Openness and focus by supporting open standards while providing extra benefits for SAP's ecosystem

Queue Name	Messages	Unacknowledged Messages	Queue Size (bytes)
sap/georelations/1/geok /3427/GeorelService/d4 1d	0	0	0
sap/georelations/1/test	28	0	12,039

Publish or Consume Messages Test publishing and consuming messages on a queue.

Publish Messages

☒ Queue

Select a queue

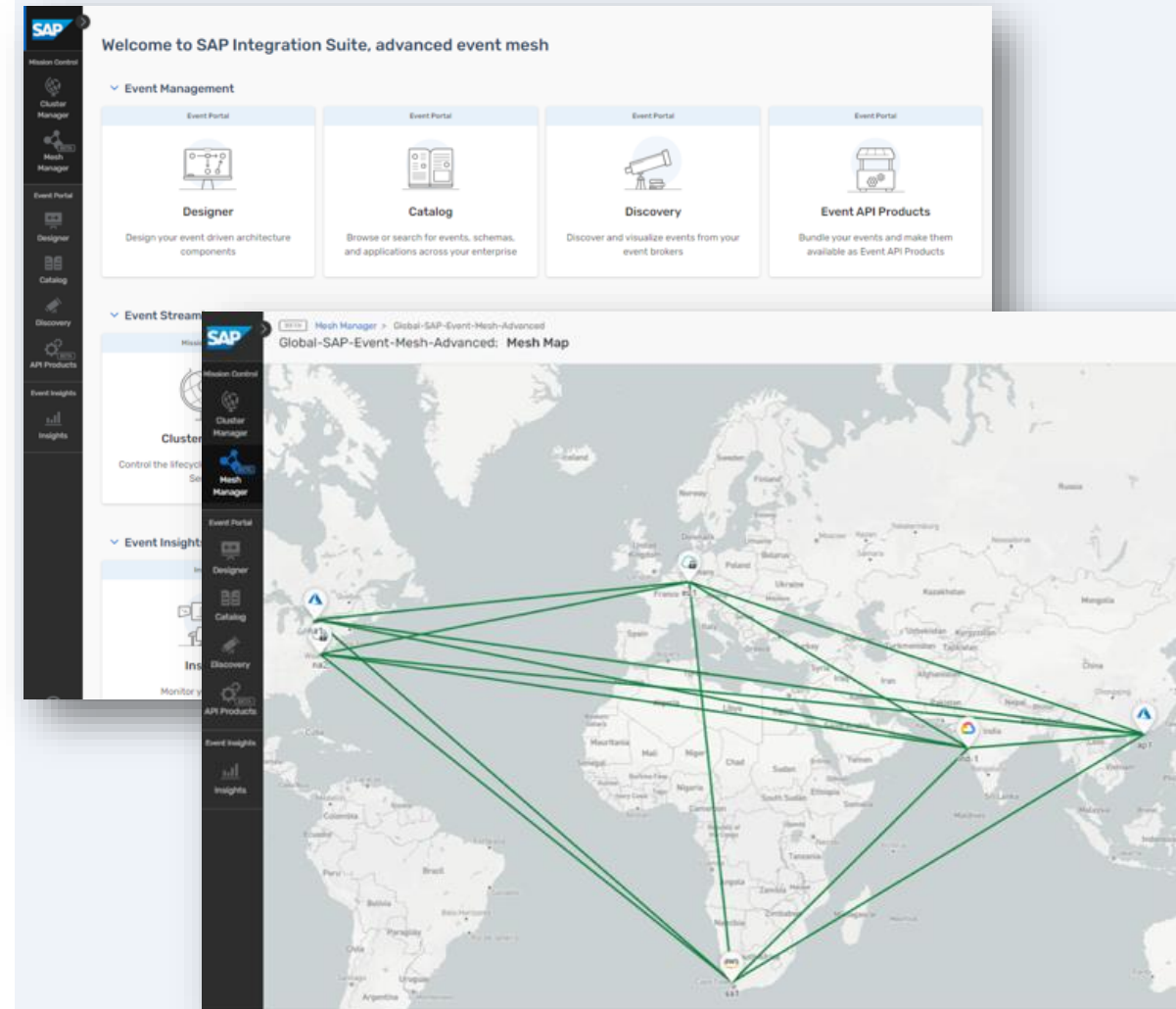
Consume Messages

☒ Queue

Select a queue

Advanced Event Mesh

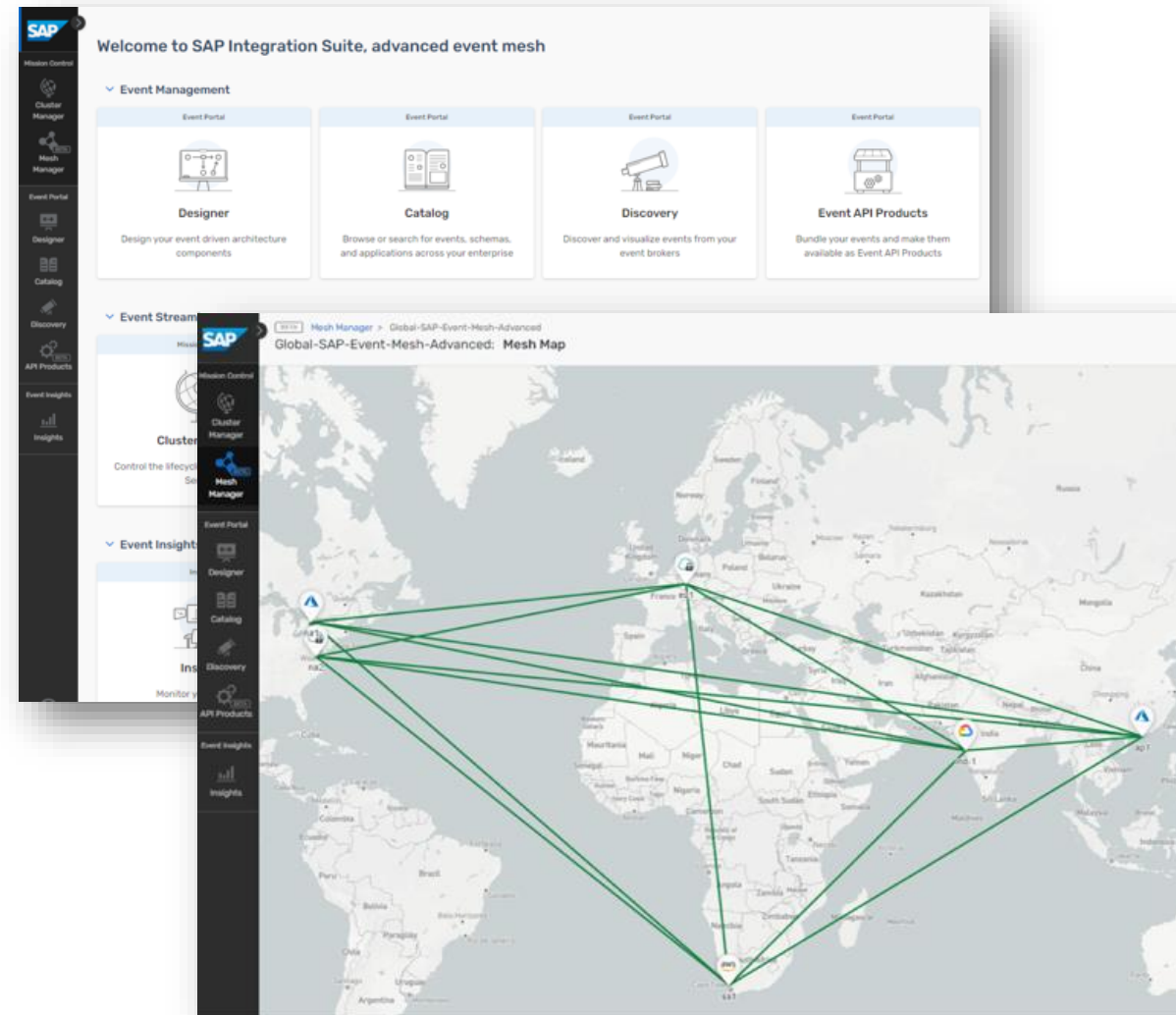
Fully-managed event streaming and management service that enables enterprise-grade event-driven architecture.



Advanced Event Mesh

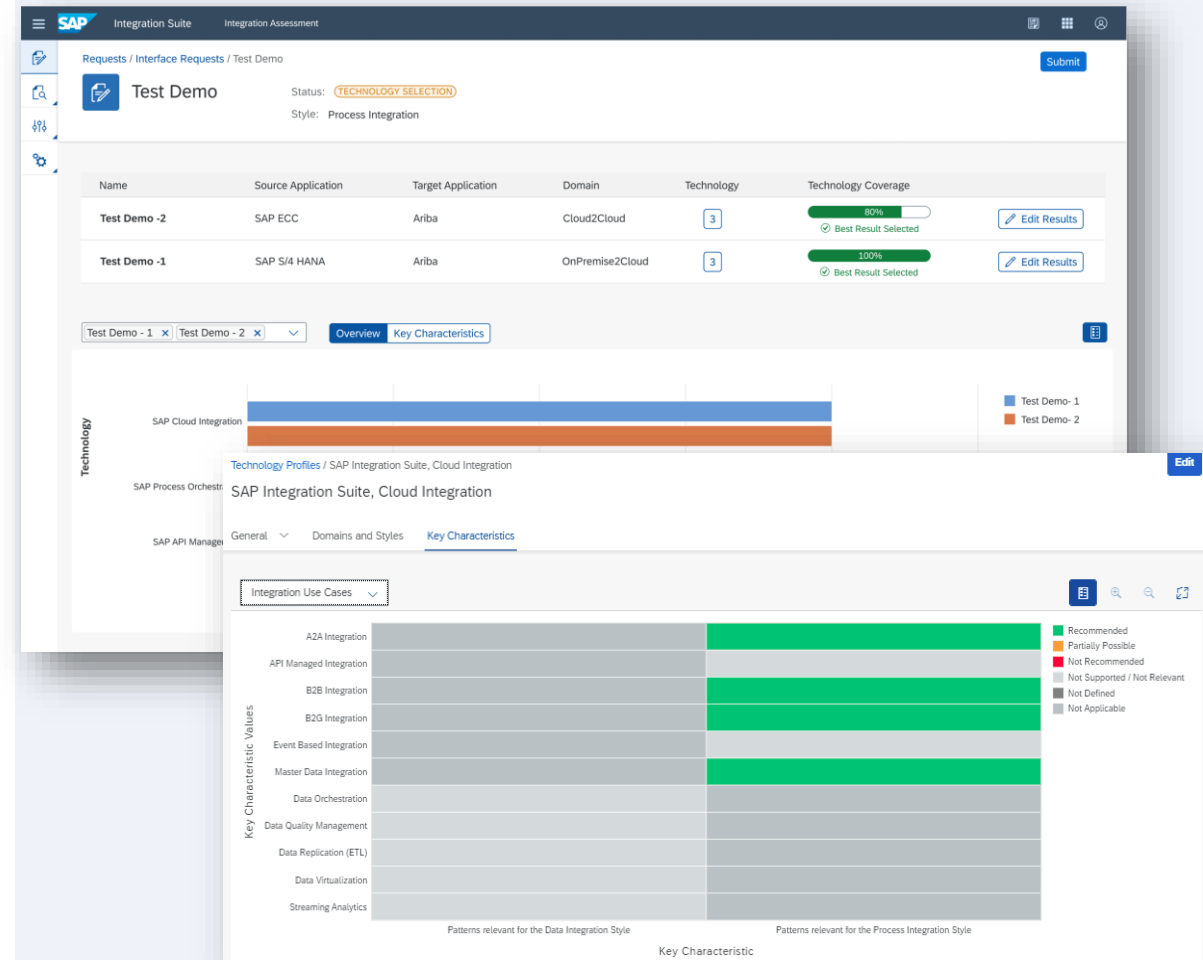


- Targeted at demanding event-driven scenarios by providing a full purpose eventing platform
- Increase flexibility and scalability by loosely coupling business applications and infrastructure
- Distributed mesh of event brokers that can be deployed across environments
- Brokers fully scale from small to very large use cases and can be deployed in existing public or private cloud environments
- Supports event streaming, event management and event monitoring



Integration Assessment

Define, document, and govern your integration strategy; part of the SAP Integration Solution Advisory Methodology (ISA-M).



Integration Assessment

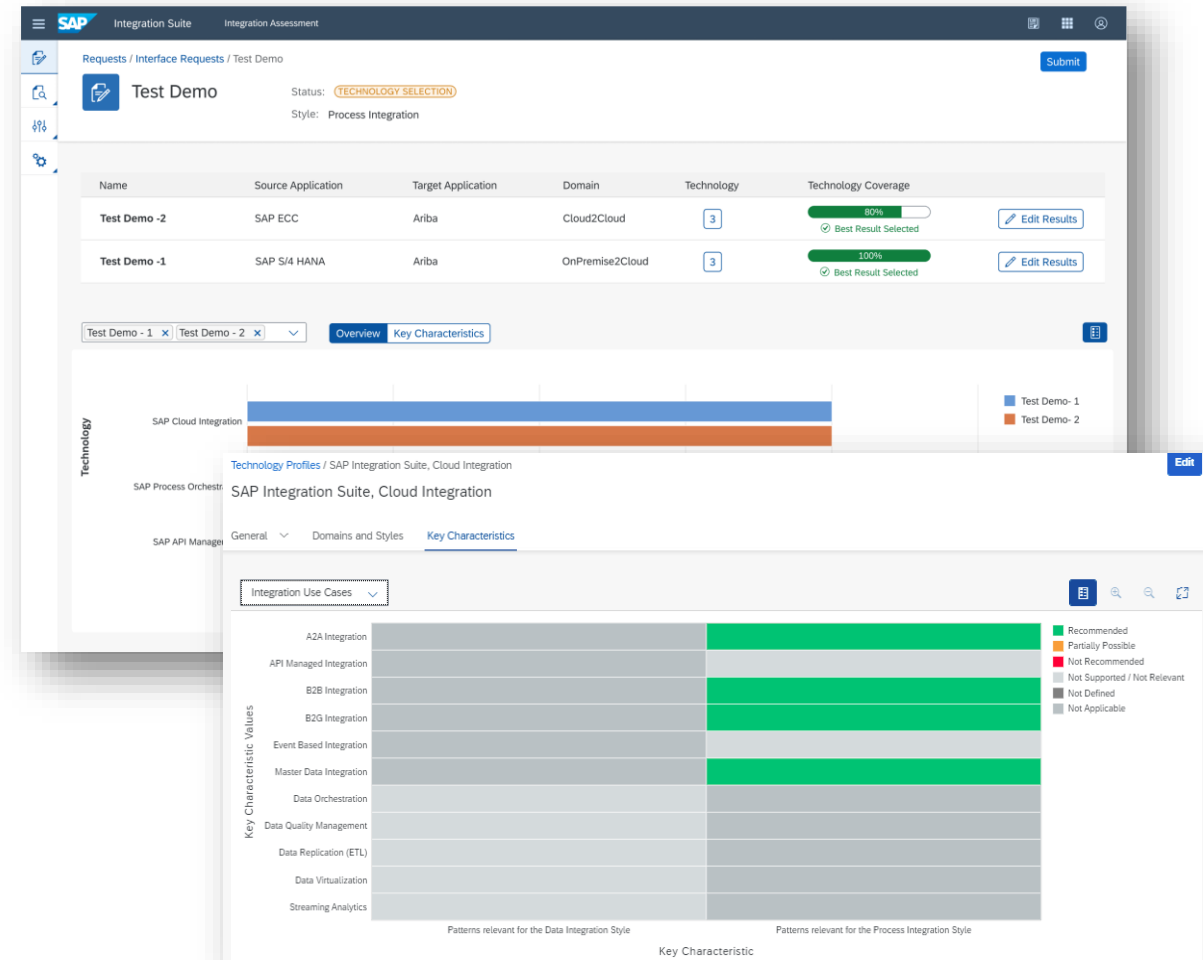


Benefits

- Support decision-making on the right integration technology
- Introduce integration governance
- Open to cover custom technology recommendations, incl. third-party applications and technologies
- Gain integration insights across applications and technologies

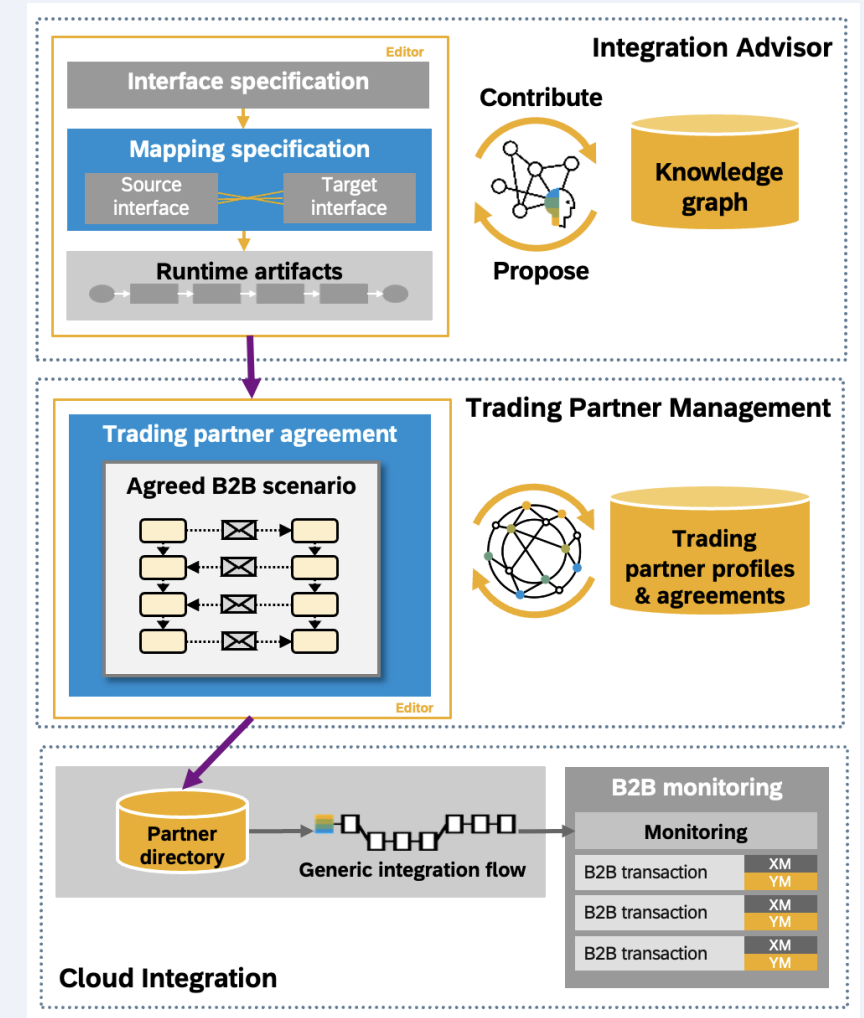
Key Capabilities

- Guided assessments of interface requests based on the customer-specific integration technology strategy
- SAP's integration technology recommendations for a turnkey start
- Access pre-shipped guidance and content that represents SAP's integration technology strategy
- Enable customer extensions and adoptions
- Build an inventory of existing integration technologies and their use across the application landscape



Integration Advisory & Trading Partner Management

Tools for B2B business. Get proposals for interfaces and mappings matching your own use case and support users in configuring the specific electronic exchange of business data between organisations and partners.



Integration Advisory & Trading Partner Management



Integration Advisor (IA)

- Definition and Documentation of Interfaces and Mappings
- Central documentation of B2B and SAP libraries
- Intelligent and crowd-sourced proposal service

Trading Partner Management (TPM)

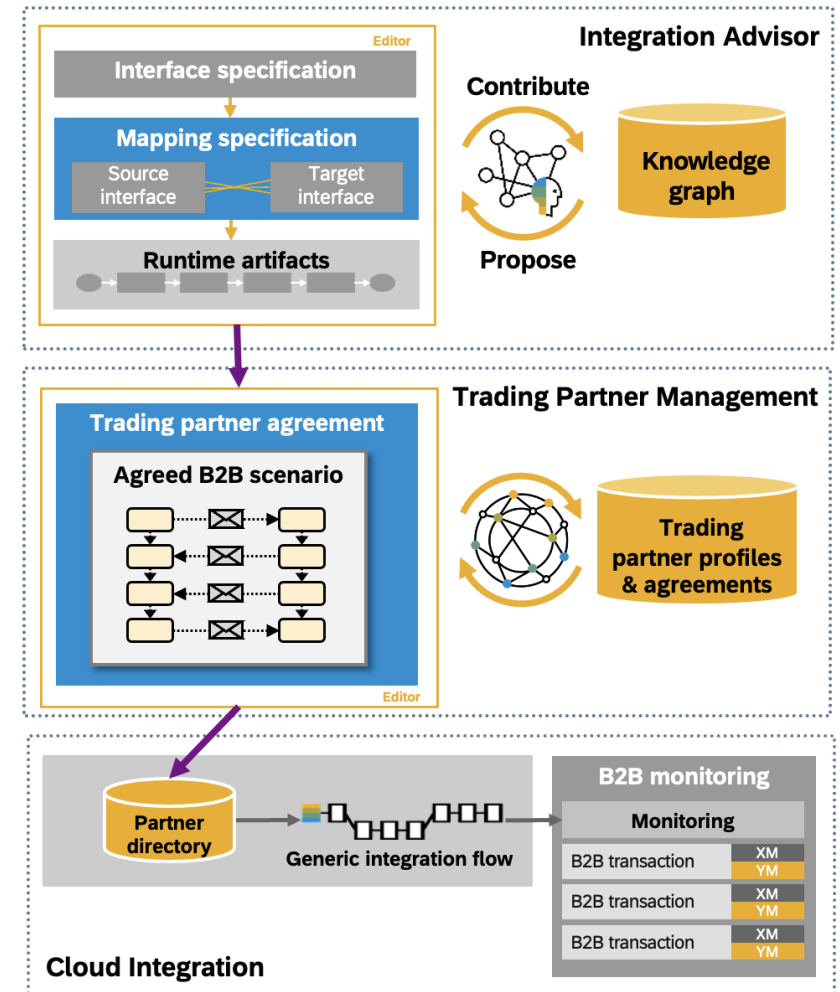
- Creation and maintenance of B2B scenarios
- Consideration of individual aspects and requirements per trading partner
- Push B2B scenario configuration to Partner Directory

Cloud Integration

- Stores configuration in Partner directory
- Processes B2B transactions with one integration flow

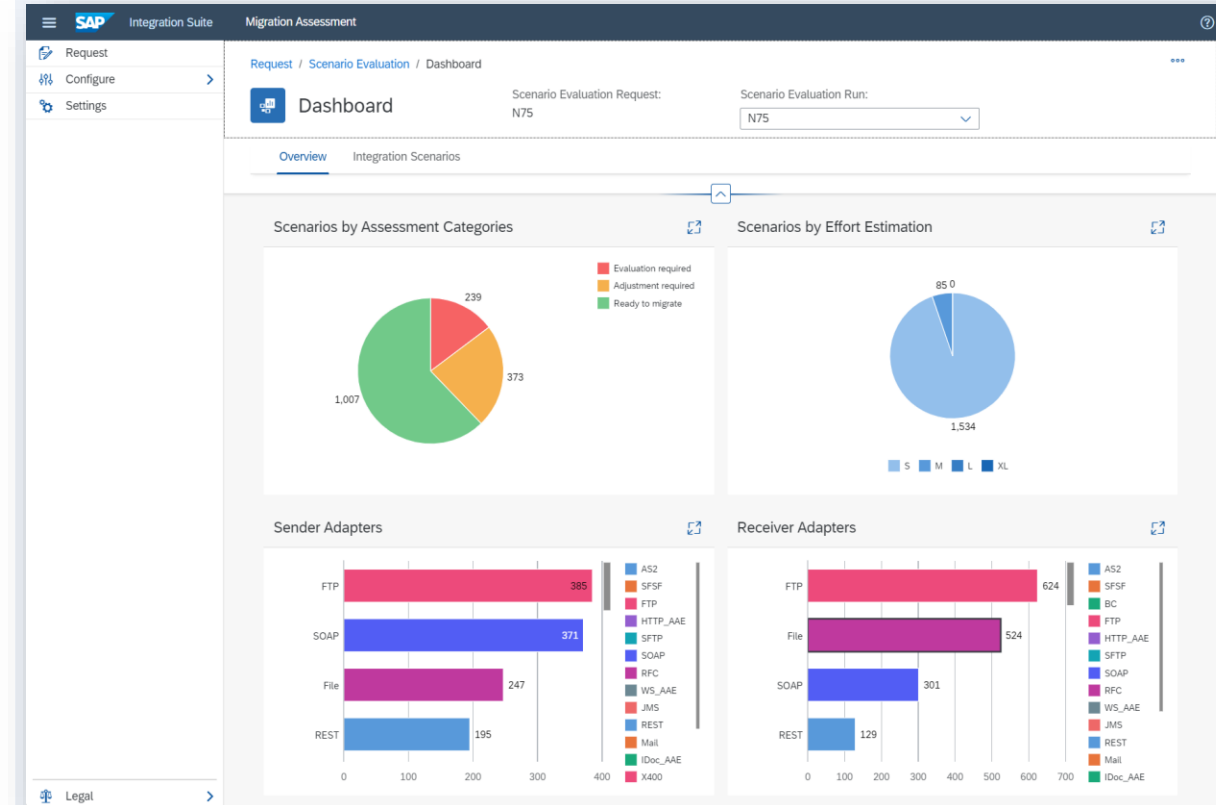
B2B Monitoring

- Monitors the B2B transactions at runtime in corporation with Trading Partner Agreement data



Migration Assessment

Automatically analyse and assess an on-premise SAP Process Orchestration system to be migrated to SAP Integration Suite.



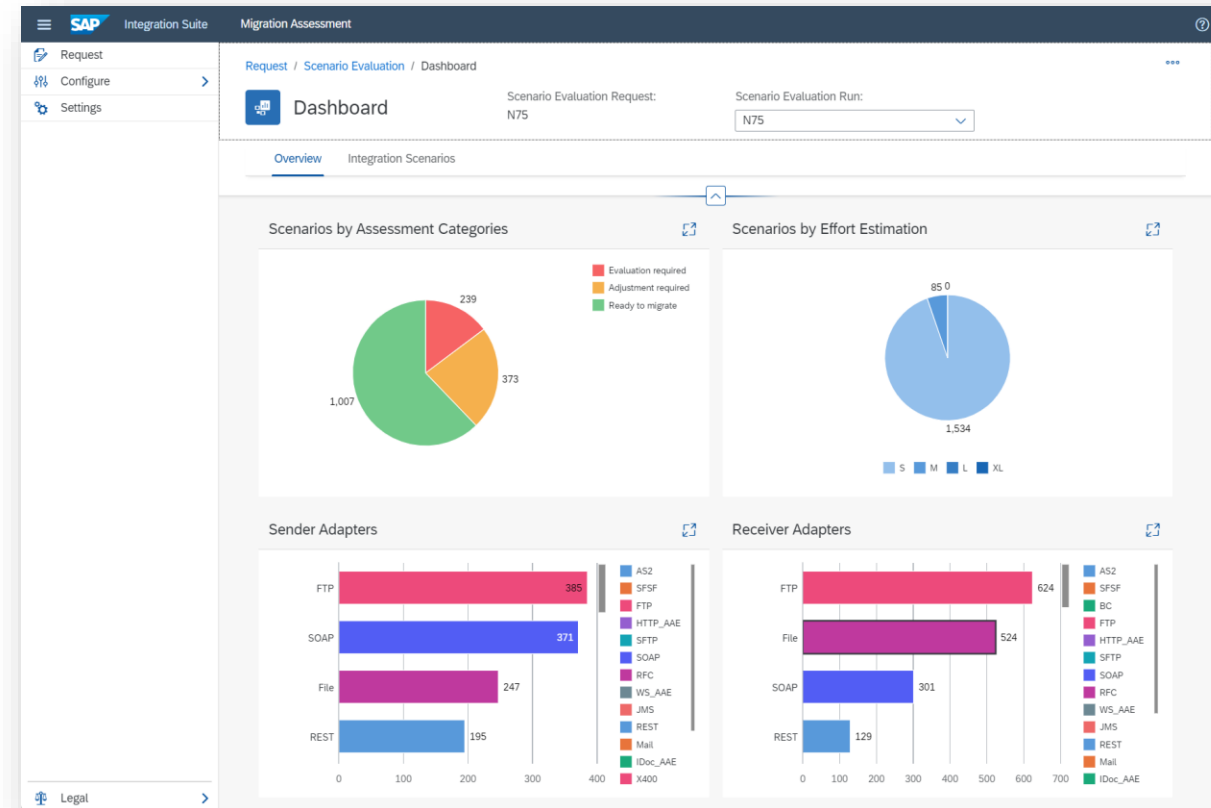
Migration Assessment capability

Transition to the cloud from SAP PO



The Migration Assessment capability is a self-service tool that automatically analyses and assesses an on-premise SAP Process Orchestration system to be migrated to SAP Integration Suite.

- Provides upfront transparency on estimated migration effort and costs
- Accelerates the migration process
- Analyses and assesses an SAP Process Orchestration system to be migrated to SAP Integration Suite
- Extracts integration scenarios from SAP Process Orchestration
- Evaluates integration scenarios based on flexible rules framework
- Estimates migration effort
- Complements the migration tool to semi-automatically migrate integration scenarios from SAP Process Orchestration to SAP Integration Suite based on integration flow templates



Demonstration



Key Points to Take Home

- SAP Integration Suite: Versatile, Hybrid and Enterprise-Grade integration platform.
- Prebuilt integrations managed and updated by SAP
- Integrate everything: A2A, B2B, Governments, SAP and non-SAP
- Tools-based, guided approach to define, document, and govern your integration strategy

Thank you! Any Questions?

Antonio Maradiaga: antonio.maradiaga@sap.com

Please remember to
complete your session
evaluation.

SAPinsider



SAPinsider.org

PO Box 982Hampstead, NH 03841

Copyright © 2024 Wellesley Information Services.

All rights reserved.

SAP and other SAP products and services mentioned herein as well as their respective logos are trademarks or registered trademarks of SAP SE (or an SAP affiliate company) in Germany and other countries. All other product and service names mentioned are the trademarks of their respective companies. Wellesley Information Services is neither owned nor controlled by SAP SE.

**SAPinsider
comprises the
largest and fastest
growing SAP
membership group
with more than
800,000 members
worldwide.**

[Integration Suite \(ondemand.com\)](#)

EIC: <https://cpisuite-us-07.integrationsuite.cfapps.us10.hana.ondemand.com/s/hell/home>