



Your Roadmap to Better Manage Supply Chain Risk: The Synchronized Planning Approach

Tod Stenger, SAP

Chicago

2024

SAPinsider



In This Session

- Transform your business with a digital, integrated planning approach.
- Leverage embedded AI technology and external data in SAP IBP for process automation, decision support and improved forecast accuracy.
- Break down silos between planning and execution, creating flexible and agile plans.
- Understand true risk and the probability of disruptions or changes.
- Increase customer satisfaction with maximum product availability.

What We'll Cover

- Supply Chain Objectives
- SAP Solutions
- Risk Aware Planning
- Product Direction
- Wrap Up



Supply Chain Objectives



Supply Chain Priorities Have Changed



Efficiency and profitability

Balance resiliency, profitability, sustainability with customer satisfaction.



Customer satisfaction

Availability of goods and reactivity.



Sustainable performance

Meet sustainability objectives (net-zero CO2 emissions target).



Risk-resilient supply chains

Proactively anticipate risks and build resilience.

Our Goal: Enabling an **Intelligent**, **Resilient** and **Sustainable** Supply Chain

Intelligent

Planning Automation based on embedded AI and Optimization – leveraging internal and external data sources.



Resilient

Using technologies that enable companies to anticipate and respond quickly to all the risks and opportunities the future holds.



Sustainable

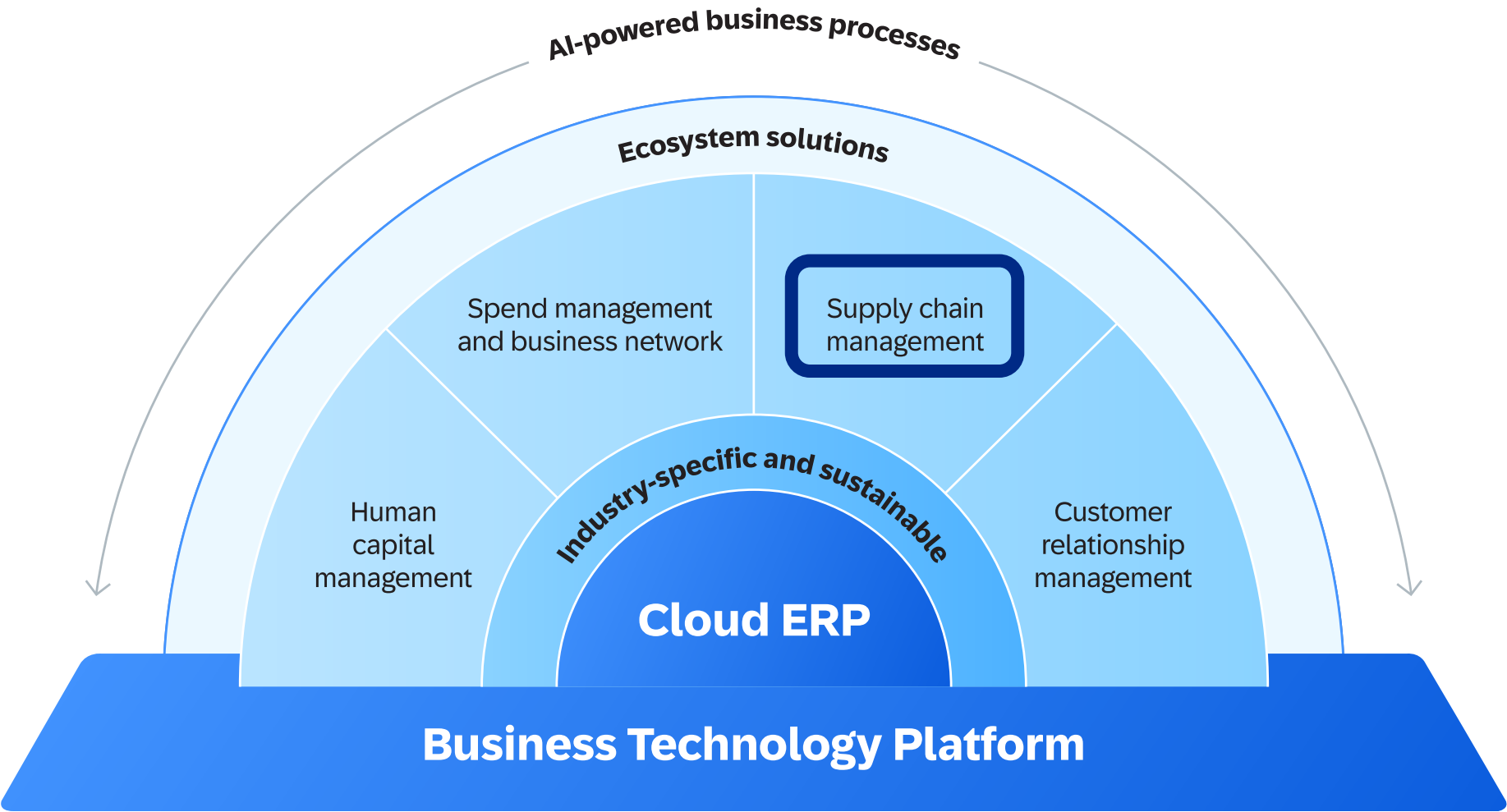
Helping businesses make sustainability part of the fabric of their enterprise-wide operations.



SAP Solutions



Supply Chain Management is a Key Part of SAP's Overall Portfolio



SAP Supply Chain Planning Platform

Connect strategic and operational planning with real-time visibility and execution

Digital Business Planning



Plan

SAP Integrated Business Planning (IBP) for Supply Chain

- Digital Twin of the entire supply chain
- Predictive and Prescriptive Decision Support
- Real-time scenarios and Intelligent Visibility
- Impact Analysis & Optimization



Collaborate

SAP Business Network

High scalability with access to trading partners (including suppliers, logistics providers, and customers) for collaborative planning and execution

SAP Analytics Cloud (SAC)

Financial planning, steering and financial impact analysis on enterprise level



Execute

SAP S/4HANA

Leverage proximity to core for transactional planning and scheduling, order promising and service parts planning.



Innovate

SAP Artificial Intelligence

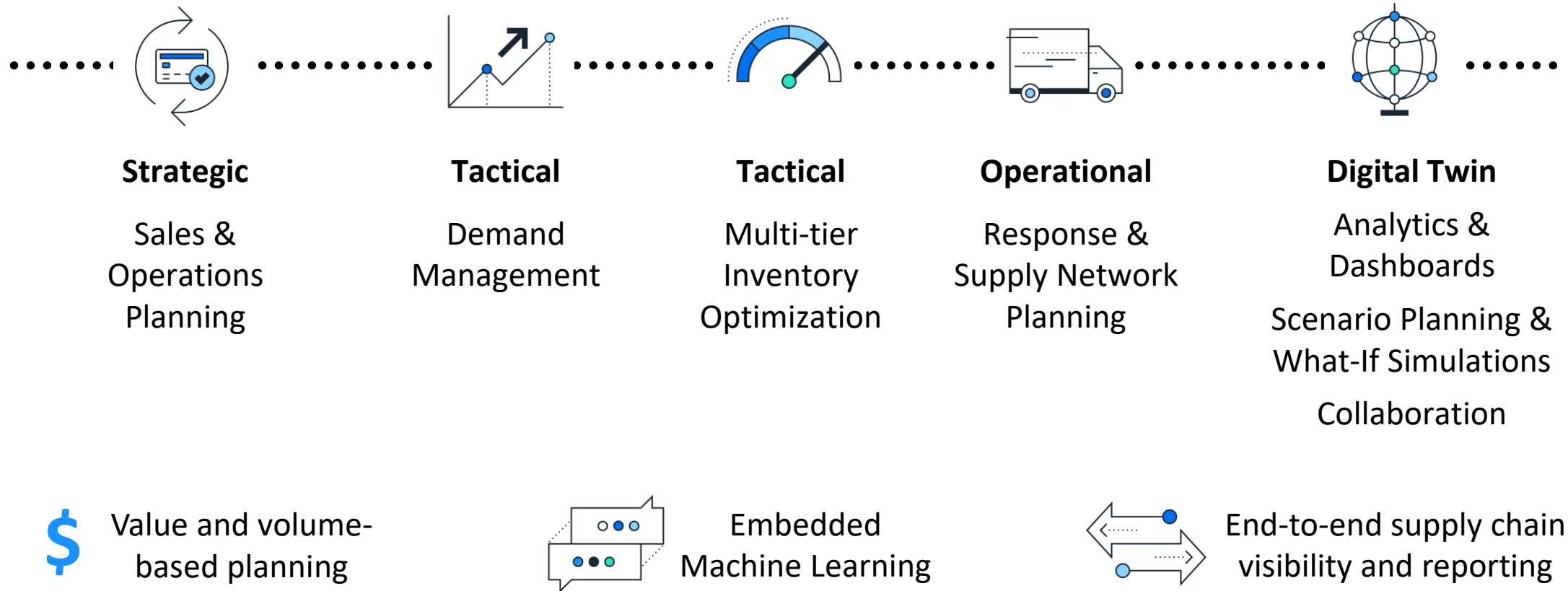
Leverage AI technology to improve master data quality, manage supply chain risk and improve sustainability

This is the current state of planning and may be changed by SAP at any time.

SAP Integrated Business Planning for Supply Chain Overview



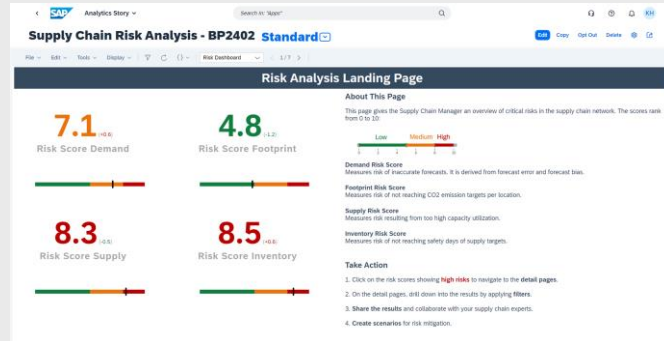
**Synchronize planning processes to minimize disruption risks
and increase supply chain resiliency**



Risk Aware Planning



Risk-aware Supply Chain Planning



Risk-aware Planning

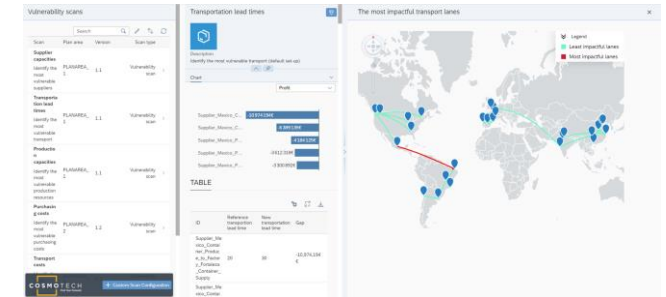
Have a competitive advantage

Strategical

Operational

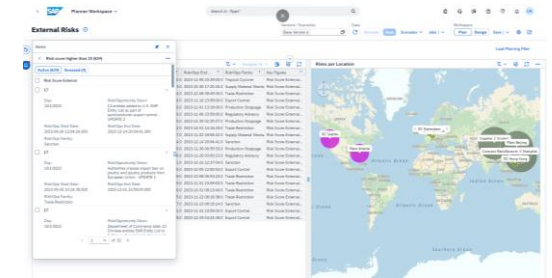


Vulnerability Scan*



SAP Integrated Business Planning

Supply Chain Planning



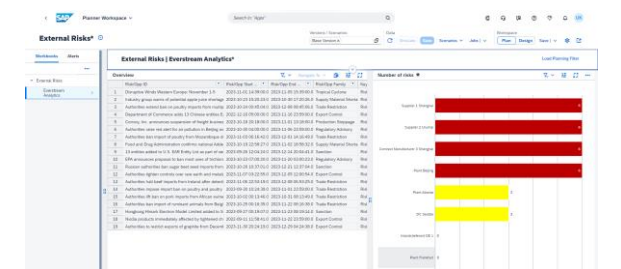
Network-aware Planning



Business Network



External Incidents*



* SAP Partner Solutions

Cosmotech and SAP IBP – Supply Chain Vulnerability Scan



Vulnerability Scan

Identify top vulnerabilities in the supply chain and simulate to get optimal mitigation plans



Available on
SAP Store

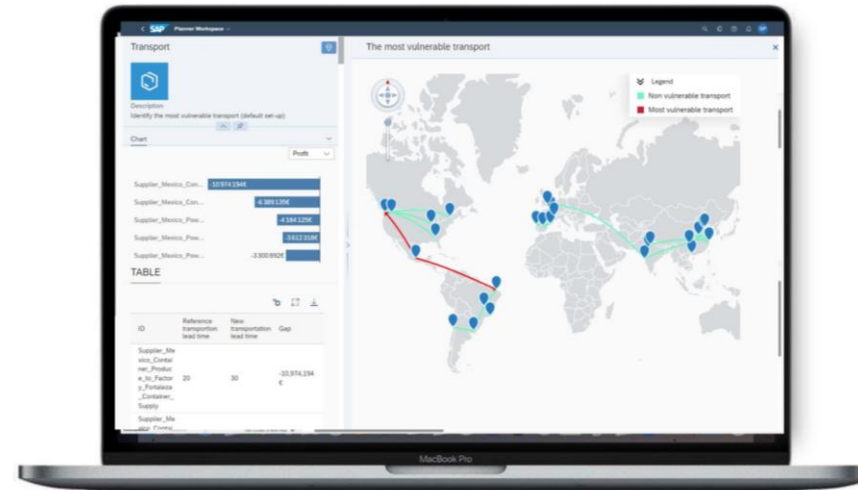


[SAP IBP & Cosmo Tech Supply Chain AI Simulation - YouTube](#)

[Supply Chain Resilience for SAP Integrated Business Planning - Cosmo Tech](#)

[SAP Store entry Cosmo Tech Supply Chain Vulnerability Scan](#)

Ready-to-deploy Software Add-On



Identify top vulnerabilities in the supply chain (resources, operations, transport...)

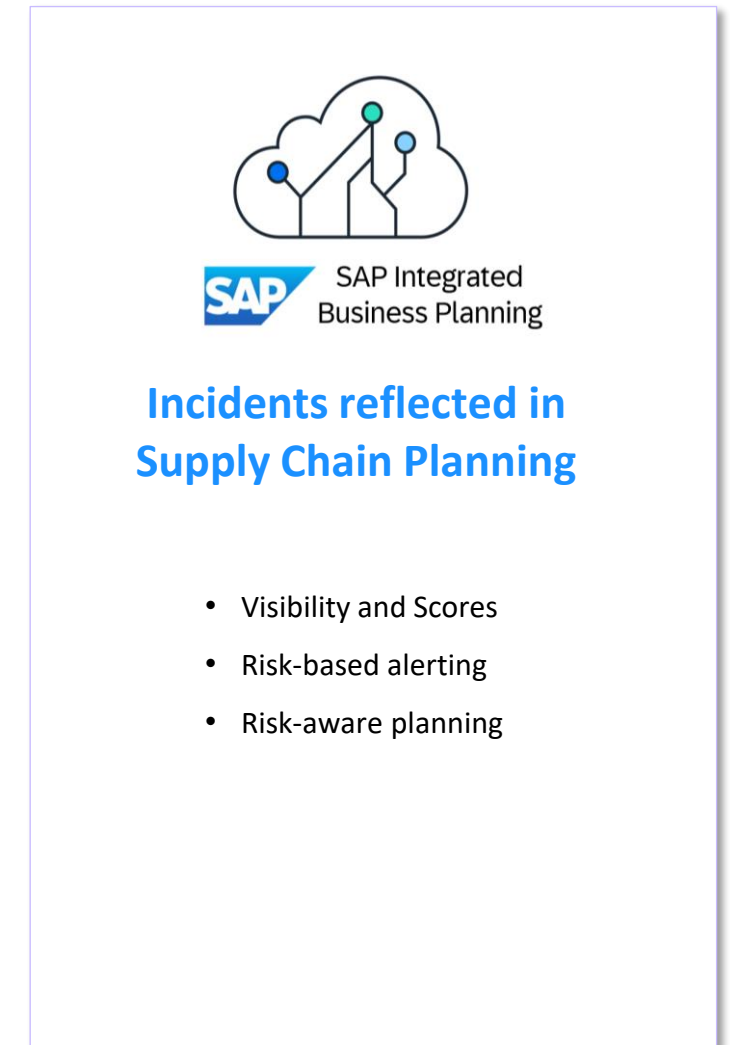
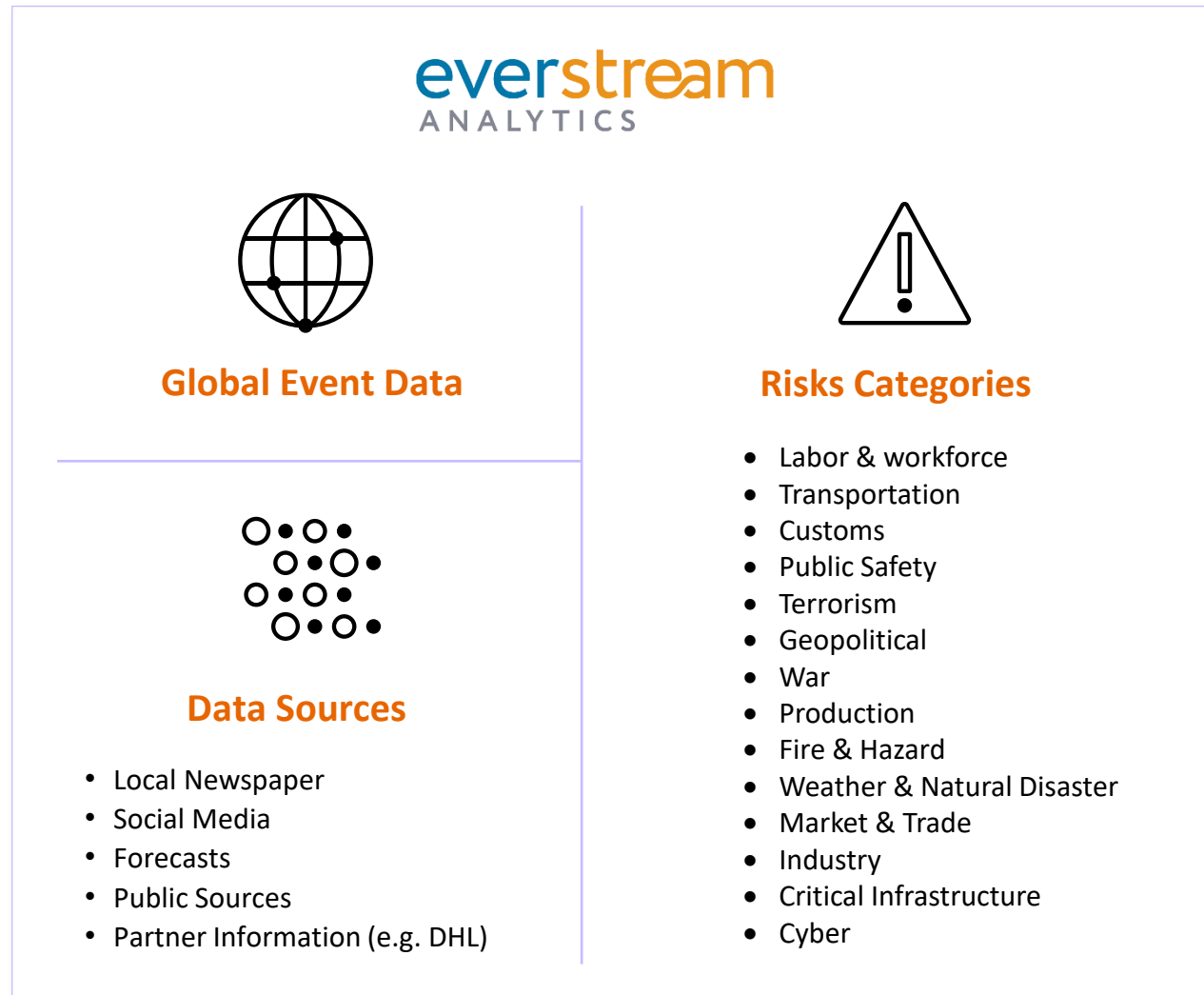


Ensure business continuity



Minimize revenue at risk

Everstream Analytics and SAP IBP



*This is the current state of planning and may be changed by SAP at any time.

Risk-Dashboards in SAP IBP

Eliminate Risks and Visualize Planning Results with Supply Chain Risk Management

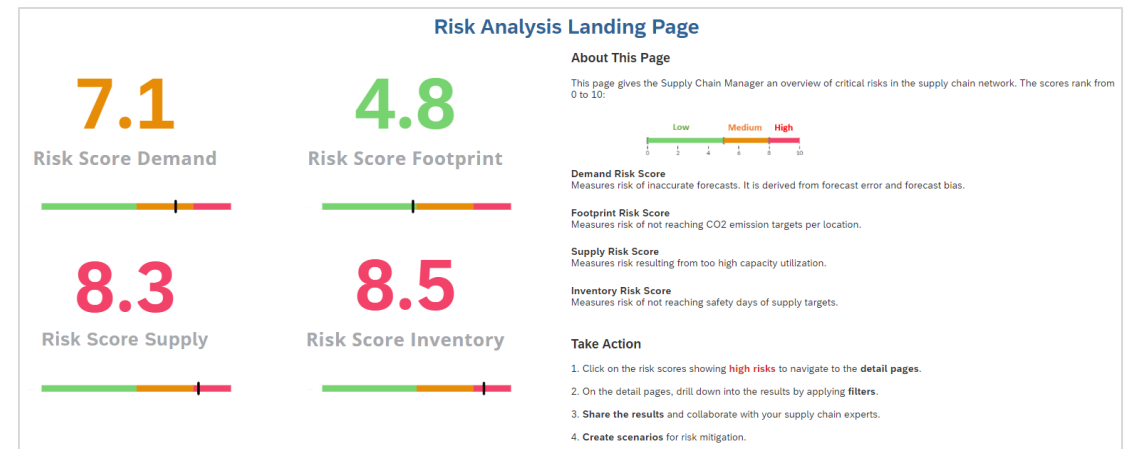
Risk Assessment and Analysis

- scores to uncover risks
- steer supply chain planning
- based on risk factors

Risk Examples

- low forecast accuracy
- excess CO2 emissions
- resource bottlenecks
- inaccurate safety stock levels

New Risk Dashboard in SAP IBP (BP content) based on IBP Analytics Stories



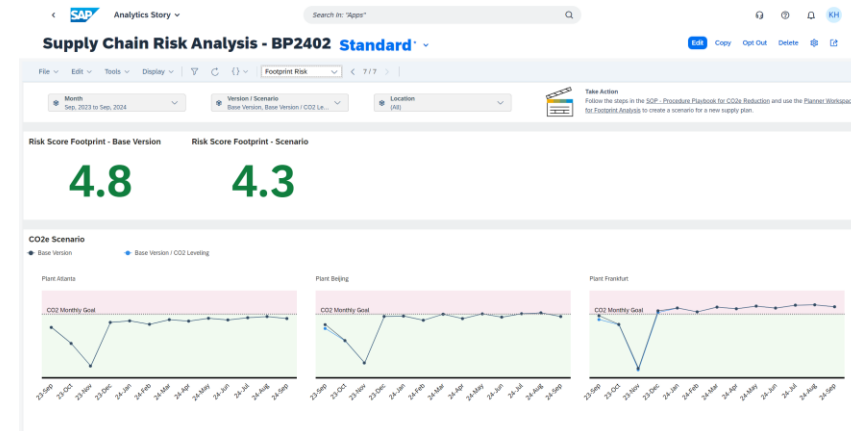
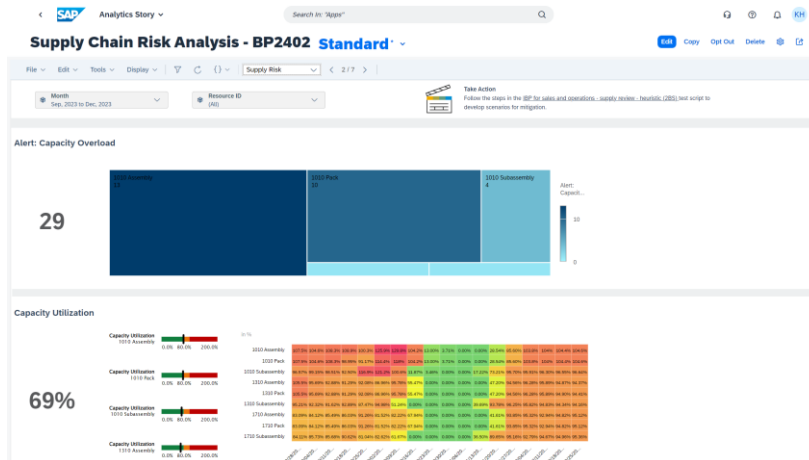
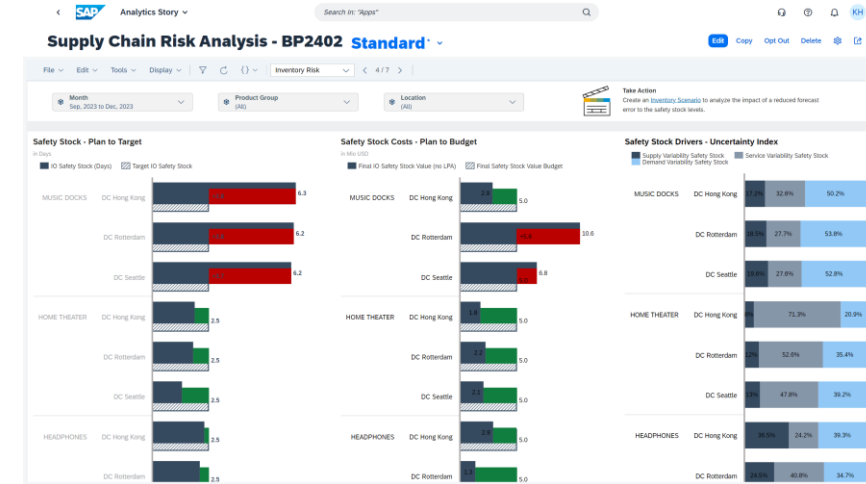
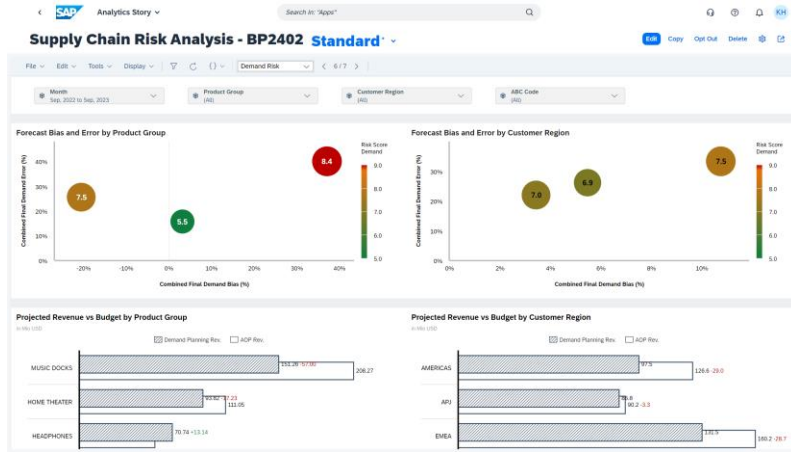
discover and subsequently eliminate planning risks by analyzing the effects and root causes

[SAP IBP - Supply Chain Risk Management - YouTube](#)

[SAP IBP - Supply Chain Risk Management – Blog](#)

Risk-Dashboard Examples

Eliminate Risks and Visualize Planning Results with Supply Chain Risk Management



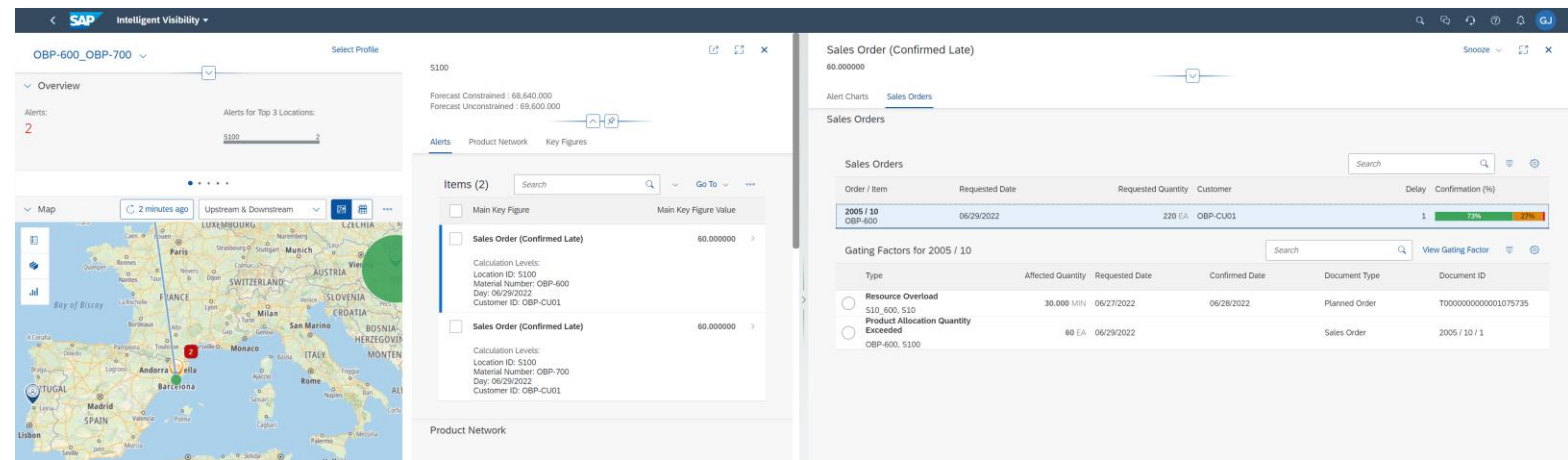
Quickly detecting supply chain disruptions and effectively manage alerts

Respond faster to exceptions in planning

Get extended visibility, understand impact and act

by leveraging

**Supply Chain
Control Tower**



enabling sophisticated
Alert Management

- Leverage and Manage custom alerts for critical supply chain issues
- Calculate on-the-fly alerts using also AI and provide context and priority
- Use Procedure Playbooks for guided solutions

[Interactive Value Journey Custom Alerts with SAP
Integrated Business Planning & AI](#)

Probabilistic Planning Approaches Available and Planned in SAP IBP

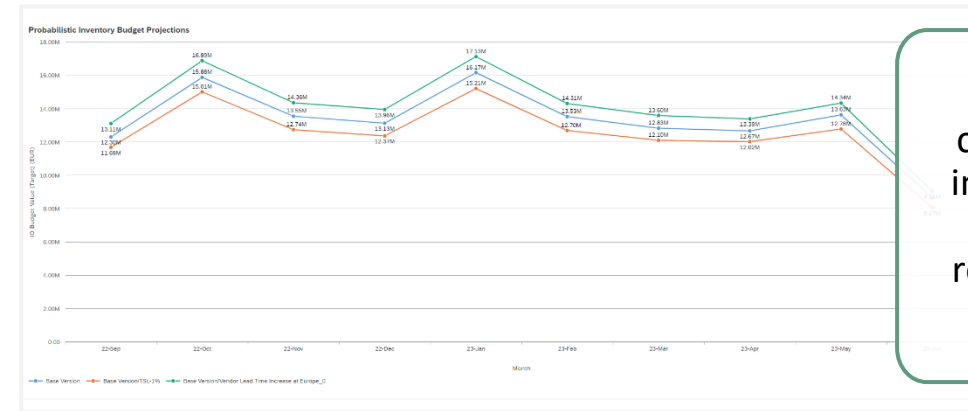
Range Forecasting

Provide confidence ranges likely to contain the future demand



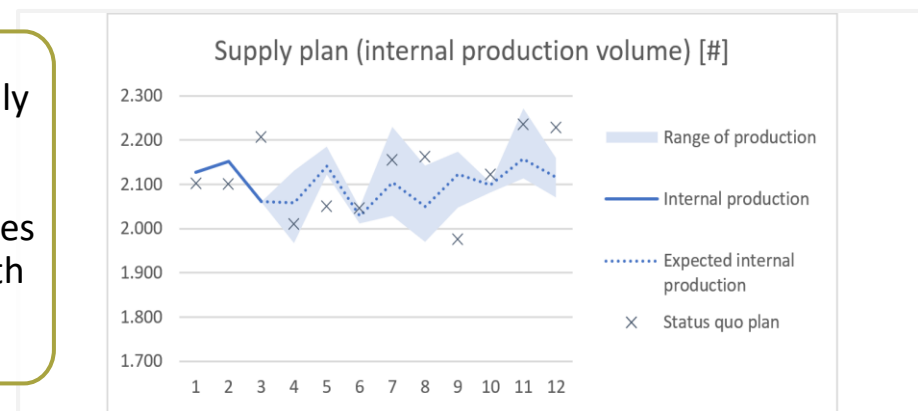
Probability-Based Inventory Simulation

Provide confidence intervals on inventory recommendations



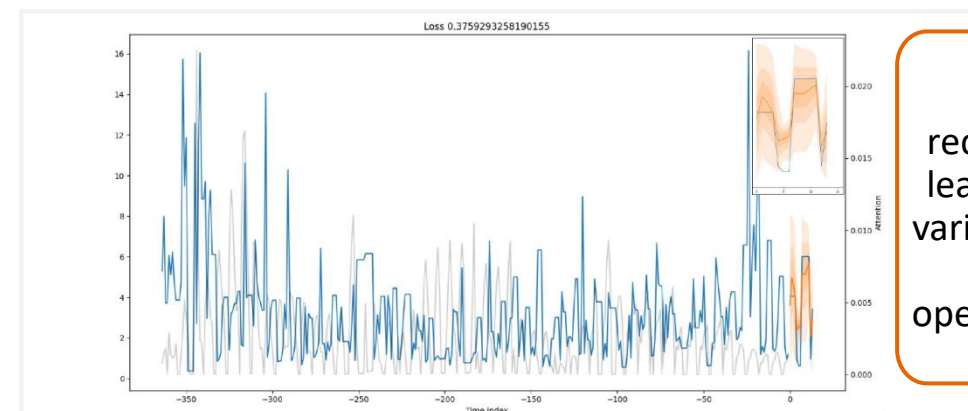
Stochastic Supply Chain Planning

Create a supply plan to best prepare for multiple futures (Research with TUM)



Supply Lead Time Prediction

Get ML-recommended lead times and variances based on actual operational data



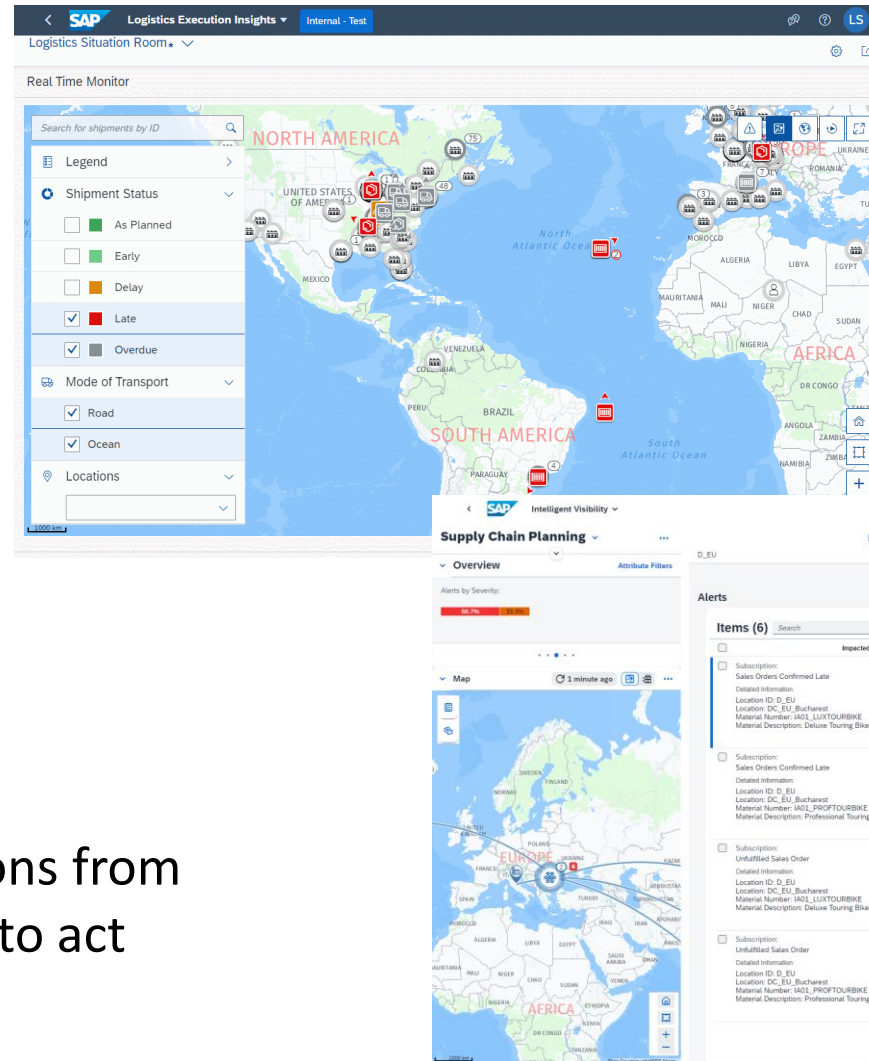


SAP Business Network

Network-aware Planning

Achieve extended supply chain transparency and collaborate effectively with your trading partners

Timely insights and predictions from network data provides time to act and solve critical situations.



The screenshot displays the SAP Sales Order Confirmed Late interface. The top bar shows 'Sales Order Confirmed Late'. Below this is the 'Alert Charts' section with a 'Sales Orders' tab. The 'Sales Orders' section shows a table of sales orders with columns for 'Order / Item', 'Requested Date', 'Requested Quantity', 'Customer', 'Total Revenue', 'Revenue at Risk', 'Delay', and 'Confirmation (%)'. The table lists three sales orders with their respective details. Below the table is a 'Gating Factors for 1798 / 10' section with a table of gating factors. The table has columns for 'Type', 'Affected Quantity', 'Requested Date', 'Confirmed Date', 'Document Type', and 'Document ID'. The table lists one gating factor with details. Below the table is a 'Procedure Playbooks (1)' section with a link to 'Impact Analysis and Decision Path for Suppl...' and a rating of 5 stars (2).

Order / Item	Requested Date	Requested Quantity	Customer	Total Revenue	Revenue at Risk	Delay	Confirmation (%)
1798 / 10 Deluxe Touring Bike	05/11/2022	350 EA	Customer 1	1,100,000 EUR	1,100,000 EUR	0	100%
1800 / 20 Deluxe Touring Bike	05/12/2022	310 EA	Customer 2	980,000 EUR	460,600 EUR	1	94.11%
1801 / 10 Deluxe Touring Bike	05/13/2022	10 EA	Customer 3	90,000 EUR	0,000 EUR	8	100%

Type	Affected Quantity	Requested Date	Confirmed Date	Document Type	Document ID
Projected Black Shortage IAD_GEAR_A SUPP_ON	350 EA	05/11/2022	05/17/2022	Inbound Delivery	450000206 / ...

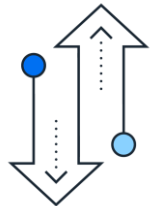
Network-aware Supply Chain Planning

Collaborate with your trading partners via the SAP Business Network



- Enabling **digitized collaboration & transparency** with all trading partners in your supply chain
- **Unparalleled visibility** across all processes in your supply chain
- **Faster response** to supply chain disruption

Collaborate with your suppliers to get inventory and manufacturing visibility



Leverage SAP Business Network Planning Collaboration to consider supplier constraints and external partner information in your Supply Chain Planning

Collaborate with your third-party logistics providers and gain early insights into delayed shipments



Use SAP Business Network for Logistics to detect Logistics' disruptions and reflect critical delays and impact in Supply Chain Planning

Product Direction



Investment focus areas in SAP Integrated Business Planning for Supply Chain

Cloud Operations and Engineering

- ✓ Scaling & Performance
- ✓ Security & Monitoring
- ✓ True cloud scalability with HANA Cloud

Seamless Planning Processes

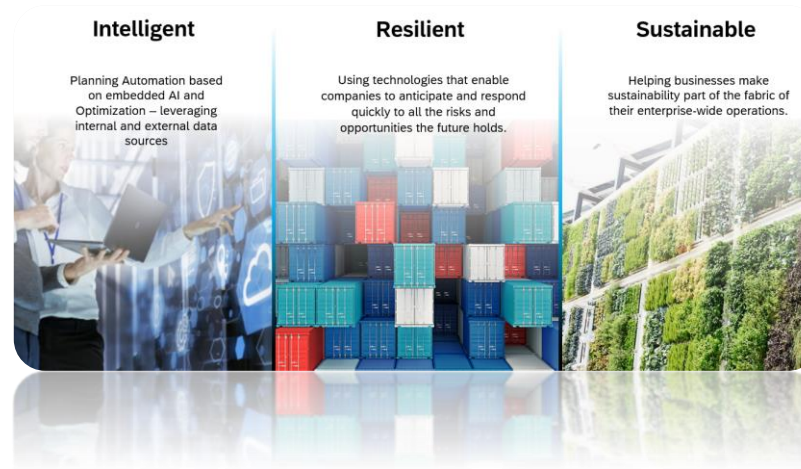
- ✓ Real-time integration
- ✓ Network Aware Planning
- ✓ Supply Chain Risk
- ✓ External Causal Factors
- ✓ Collaborative Enterprise Planning (xP&A) with SAP Analytics Cloud
- ✓ Sustainable Supply Chain Planning

Extensibility

- Supply Optimizer Extensibility
- Extension Points

Planning UI

- ✓ Planner Workspace
- ✓ Analytics Stories from SAP Analytics Cloud



Advanced Planning

- ✓ Synchronized Planning for Production
- Characteristics-Based Planning
- Harmonized Supply Planning
- ✓ Touchless Forecasting
- ✓ Next generation Inventory Optimization
- ✓ Probability Based Planning
- ✓ Scenario Management

Intelligence & Visibility

- Generative AI
- ✓ Machine Learning
- ✓ Process Automation

✓ Delivered. Continuous Innovation with large investments

This is the current state of planning and may be changed by SAP at any time 22

Synchronized Planning for Production: Combining Supply Planning capabilities in IBP with Production Planning in SAP S/4HANA in a Synchronized Way

Supply Planning in SAP IBP

Supply Planning business process

SAP S/4HANA PP/DS (Advanced Planning)

Detailed Planning and Scheduling business process

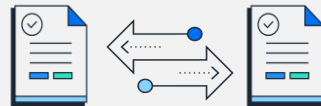


Two Standard Integration Patterns in Synchronized Planning for Production Enabling Seamless Business Process Integration

Use order integration...

...for **Operational Planning**

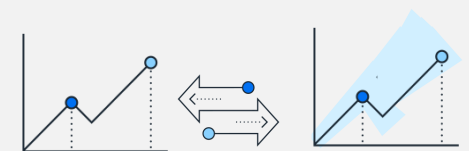
- **Synchronization of supply plans in real time** between SAP IBP and SAP S/4HANA PP/DS on order level and vice versa
- **Tight integration for E2E processes** across SAP IBP, SAP ERP, & SAP S/4HANA PP/DS leveraged for base version
- **Flexible definition of process ownership** between operational supply planning and detailed planning and scheduling



Use key-figure integration...

...mainly for **Tactical Supply Planning**

- **Synchronization of supply plans by sharing constraints** as key figures between SAP IBP and SAP S/4HANA PP/DS
- **Loosely coupled** direct integration between SAP IBP and SAP S/4HANA PP/DS
- Constraints are considered in selected SAP S/4HANA PP/DS heuristics

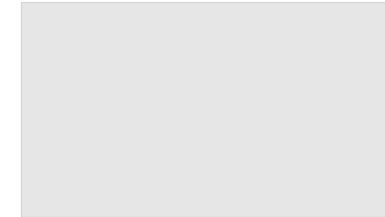


Outlook

- **Order Integration:** Advanced scenarios (like withdrawal from another plant or characteristic based planning) and new Fiori App for SYPP Master Data Maintenance in SAP S/4HANA
- **Key Figure Integration:** Extend the constraint heuristic for production planning process (e.g. IBP Supply Plan as minimum and maximum supply key figures to SAP S/4HANA PP/DS)

Supply Planning

- **Characteristics-Based Planning:** Use order attributes to support planning where supply decisions are based on demand characteristics, e.g. regulatory or embargo use cases, planning with many characteristic combinations
- Further enhancements in interactive planning in **Transport Load Building**
- **Harmonized Supply Planning**



Planned in 2024

Planned in 2024

Planned in 2025



SAP Integrated Business Planning for Sales and Operations

- Increase internal collaboration and productivity via **Approvals and Workflow Management**
- **Task Management** in Planner Workspace
- **Driver Based Planning:** Flexible planning levels and Driver Analysis in Planner Workspace
- Improved **Collaboration with Microsoft Teams**
- Process hierarchies and additional activity types in **Process Management**

First scenario
shipped in 2024

Planned in 2024

Planned in 2024

Planned in 2024

Research

SAP Integrated Business Planning for Demand

- **Product Lifecycle Management (PLM):**
 - Guided-procedure for occasional users, multiple launch dimensions
 - Aggregated like-modelling
 - Consider PLM in Segmentation, Time Series Analysis and for independent variables
- **Range forecasting and confidence intervals**
- **Additional forecast automation options:**
 - Automated Outlier Correction, parameter optimization for Croston TSB
 - Auto-Machine Learning
 - Identify & consider life cycle status, forecast level optimization
- **Additional ML & AI:**
 - Curve-based forecasting & Extreme Gradient Boosting algorithms
 - Forecast Explainability via Generative AI
- Increased forecast accuracy and improve visibility of relevant factors for your demand with **easy access to external information**

Shipped in 2023

Planned in 2024

Planned in 2024

Shipped in 2023/24*

Planned in 2024

Research

Vision

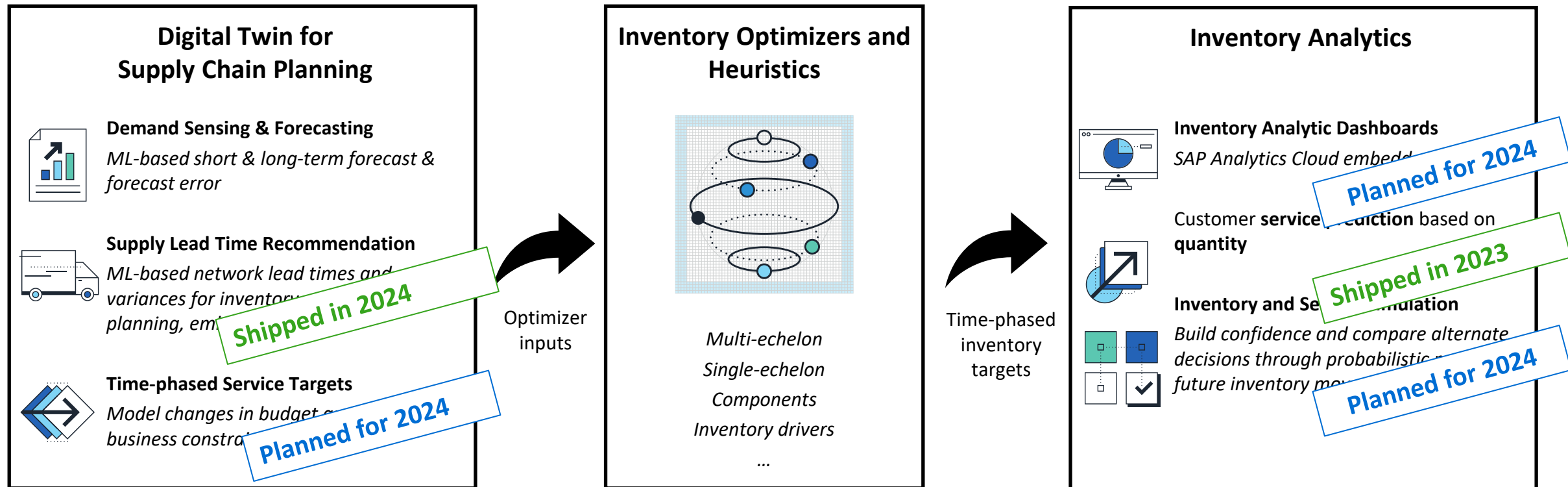
Shipped in 2023/24

Research

Research

Next Generation of Inventory Optimization

SAP IBP for inventory is already a **leading inventory optimization solution (IDC 2022)** that offers **robust and proven algorithms** and **sophisticated planning capabilities**

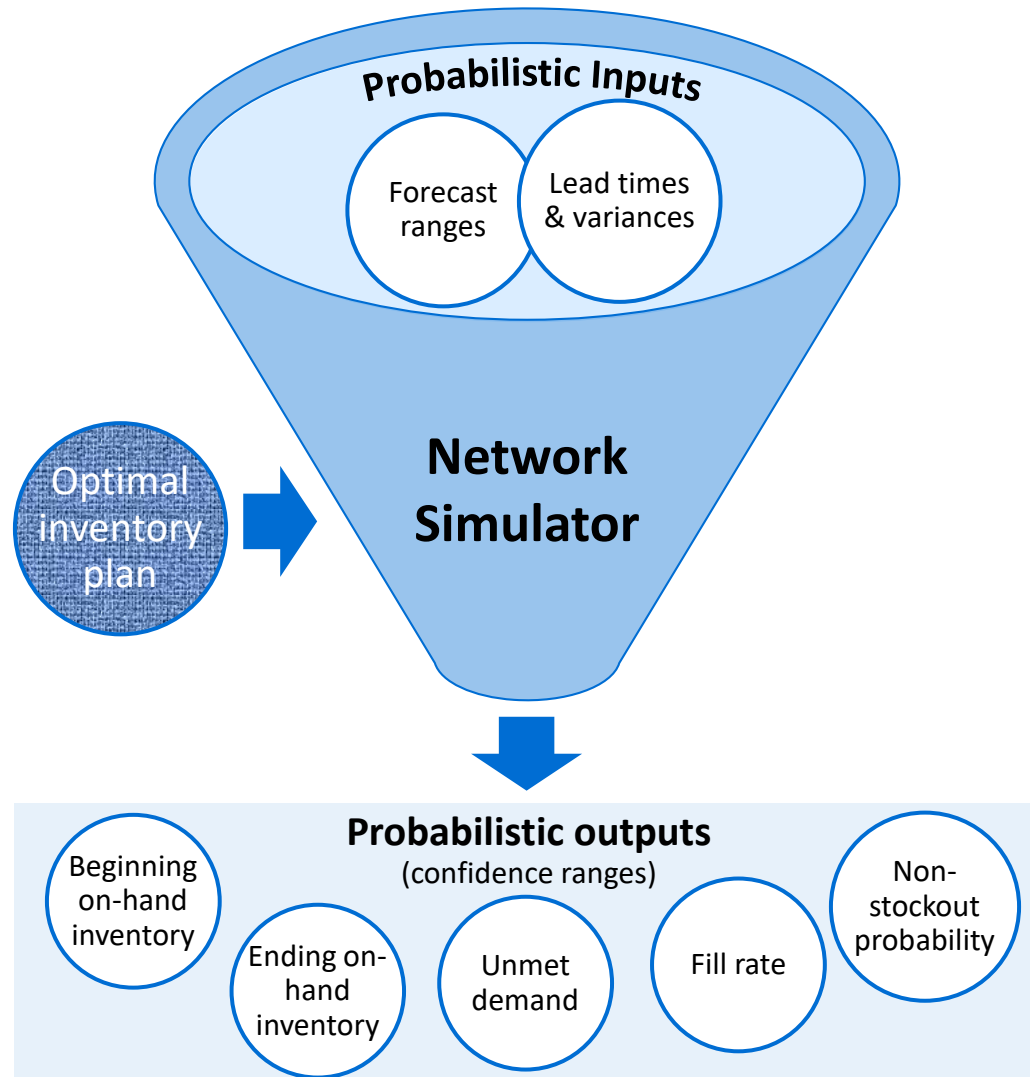


Inputs will be **more accurate** and require **less effort** to maintain.

Outputs will drive **analytical capabilities** for strategic and financial decision making.

Inventory & Service Simulation

Assess the performance of an inventory plan when exposed to demand and supply uncertainties



Starting with an optimal inventory plan and a profile of network uncertainties, the Network Simulator mimics flow of information and physical material across a multi-stage network.

Thousands of trials are automatically executed to generate range-based performance indicators.

Planners may rapidly configure profiles to compare benefits of alternate operational risks and decisions.

“SAP IBP inventory, how confident are you of projected December inventory at DC 2?”

“Given new delays from Supplier Y, what is the expected customer service range for product Z in December?”

SAP Integrated Business Planning for MRO (Maintenance & Operations Planning)



IBP for MRO

Covers Maintenance & Operations Planning (**M&OP**) by allocating MRO parts & workforce in the right place at the right time by optimizing inventory levels to decrease asset downtime and optimize procurement decisions

Target market

Asset-Centric Segment
(Oil & Gas, Mining, Railways, Utilities, etc.)

Shipped in 2022 & 2023

- Integration with **Plant Maintenance** (ECC & S4)
- Integration with **Project system** (ECC & S4)
- **Inventory Planning** using Poisson & N (μ , σ) & γ distribution

Outlook (Planned in 2024)

- **MRO Parts Criticality determination**: rules-based criticality and risk score determination for automatic service level calculation
- **Rotables Planning**: Repair, re-introduction, refurbish or scrap material
- **Inventory Balancing Operator**: rules-based materials allocation

Business AI in SAP IBP

Retrieve the information from SAP Help, Notes and KBAs

Navigate to the needed functionality

Create analytics based on natural language queries

Real-time supply chain
risk evaluation



SAP Joule



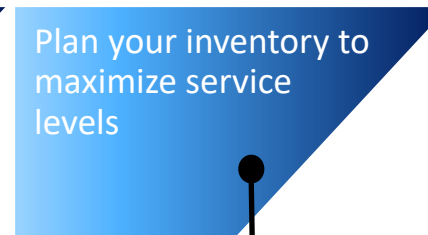
Smart Monitoring



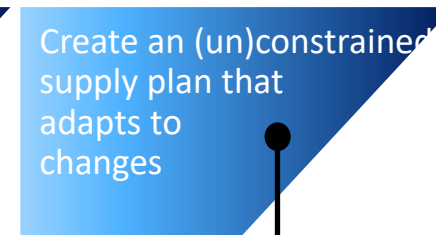
Integrate and check
master data



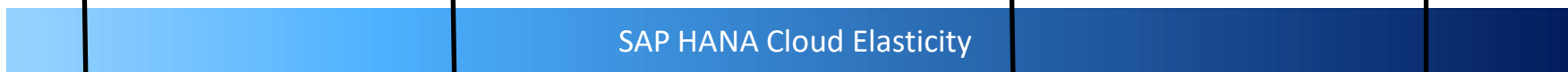
Create a strategic and/or
operational demand plan



Plan your inventory to
maximize service
levels



Create an (un)constrained
supply plan that
adapts to
changes



SAP HANA Cloud Elasticity

Find outliers based on
existing patterns

Define your own patterns

Turn patterns into
correction rules

Automated outlier handling
Create forecast with Auto ML

**Easily understand how your
Forecast was generated
(GenAI)**

Inventory and Service
Simulation

Service Level
Determination (MRO) –
i.e. Attribute-Based
Segmentation

**Explanation of optimized
supply plan (GenAI)**

**Supply planning assistant
(GenAI)**

Automated hyperparameter
settings for optimizer

SAP IBP Vision for Artificial Intelligence

GenAI to support your planning

Explanation of planning jobs

Demand
Forecasting

Inventory
Optimization

Supply heuristics
and optimization

Integration

Others

Compares different
planning runs

Generates what-if scenarios

The screenshot displays the SAP IBP Planner Workspaces interface. The main window is titled "Demand Supply Review" and shows a list of alerts under the "Alerts" tab. The alerts are categorized by "Customer Demand Shortage (5)". A table of alerts is visible, including details like Customer ID, Product ID, and alert status. Overlaid on the interface is a purple chat window titled "Joule". The chat window shows a greeting "Hello, How can I help you?" and a response from the AI assistant: "Provide the status of the last optimizer planning run. Optimizer found optimal solution. Any remaining runtime is not needed. Optimizer solving time: 0.03 seconds. Optimizer explanation time: 0.12 seconds. Optimization problem contains 1344 variables. Optimization problem contains 0 discrete variables. Optimization problem contains 858 linear constraints." The chat window also has a text input field at the bottom with the placeholder text "How can I help you?".

Embedded in Joule

Hi Sandra,
How can I help you?

Increased trust of
planners in
generated plans

Increased
reliance on
automated
processes

Increased
efficiency

Wrap Up



Where to Find More Information

www.sap.com/ai

- Get started with SAP Business AI

[Supply Chain](#) | [SAP Business AI](#) (on SAP.com)

- Scroll to Planning for more information

[IBP Roadmap](#) (S-user required – to request [click here](#))

- Select “Focus Topics” > Artificial Intelligence (must have an S-User to access)

<http://help.sap.com/IBP>

Key Points to Take Home

- Risk is a critical component of Supply Chain Plans
- Everstream, an SAP partner, can surface risks that are relevant to your supply chain
- Cosmotech, an SAP partner, can stress test your supply chain to identify areas of risk
- SAP Solutions can help you break down silos between planning and execution, creating flexible and agile plans
- SAP Supply Chain solutions already have AI embedded in them

Thank you! Any Questions?

Tod Stenger, SAP

Tod.Stenger@sap.com

[Linkedin.com/in/](https://www.linkedin.com/in/)

Please remember to
complete your session
evaluation.

SAPinsider



SAPinsider.org

PO Box 982Hampstead, NH 03841
Copyright © 2024 Wellesley Information Services.
All rights reserved.

SAP and other SAP products and services mentioned herein as well as their respective logos are trademarks or registered trademarks of SAP SE (or an SAP affiliate company) in Germany and other countries. All other product and service names mentioned are the trademarks of their respective companies. Wellesley Information Services is neither owned nor controlled by SAP SE.

**SAPinsider
comprises the
largest and fastest
growing SAP
membership group
with more than
800,000 members
worldwide.**
