

7 Best Practices to Implement Fiori when Transitioning to SAP S/4HANA

dr. Tamas Szirtes, SOA People



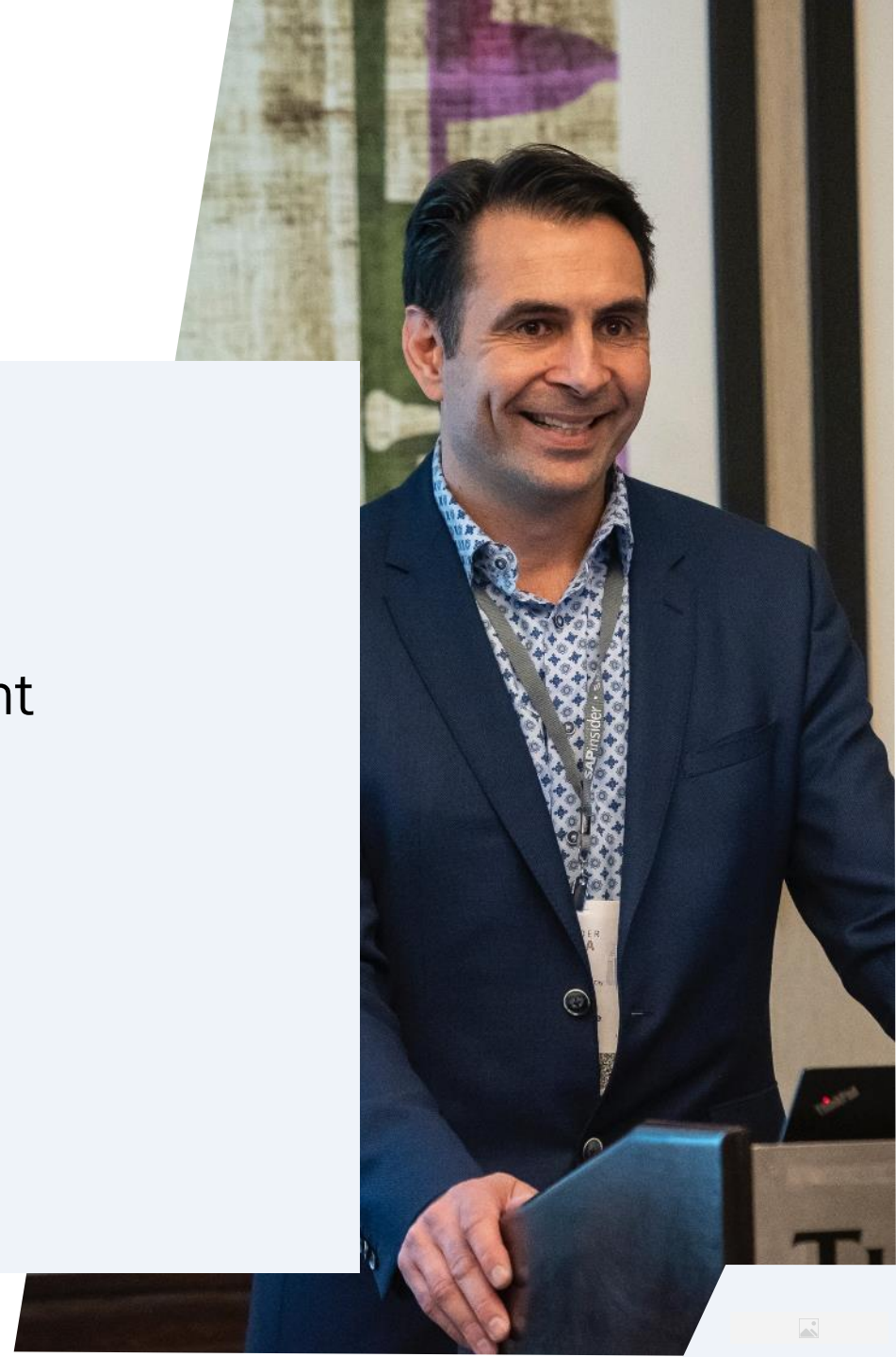
2023

In This Session

- Understand the role of SAP Fiori in SAP's user experience strategy.
- Learn how to build your Fiori roadmap for your S/4HANA migration project.
- Discover how to increase adoption of SAP Fiori and S/4HANA.
- Understand how to make your Fiori architecture scalable, performant, and secure.
- Get advice how to build the necessary skills.

Agenda

- SAP's Fiori strategy
- 7 best practices
 - Establishing the value
 - Roll-out and change management
 - User experience
 - Architecture
 - Performance and support
 - Development
 - Skill building
- Wrap-Up

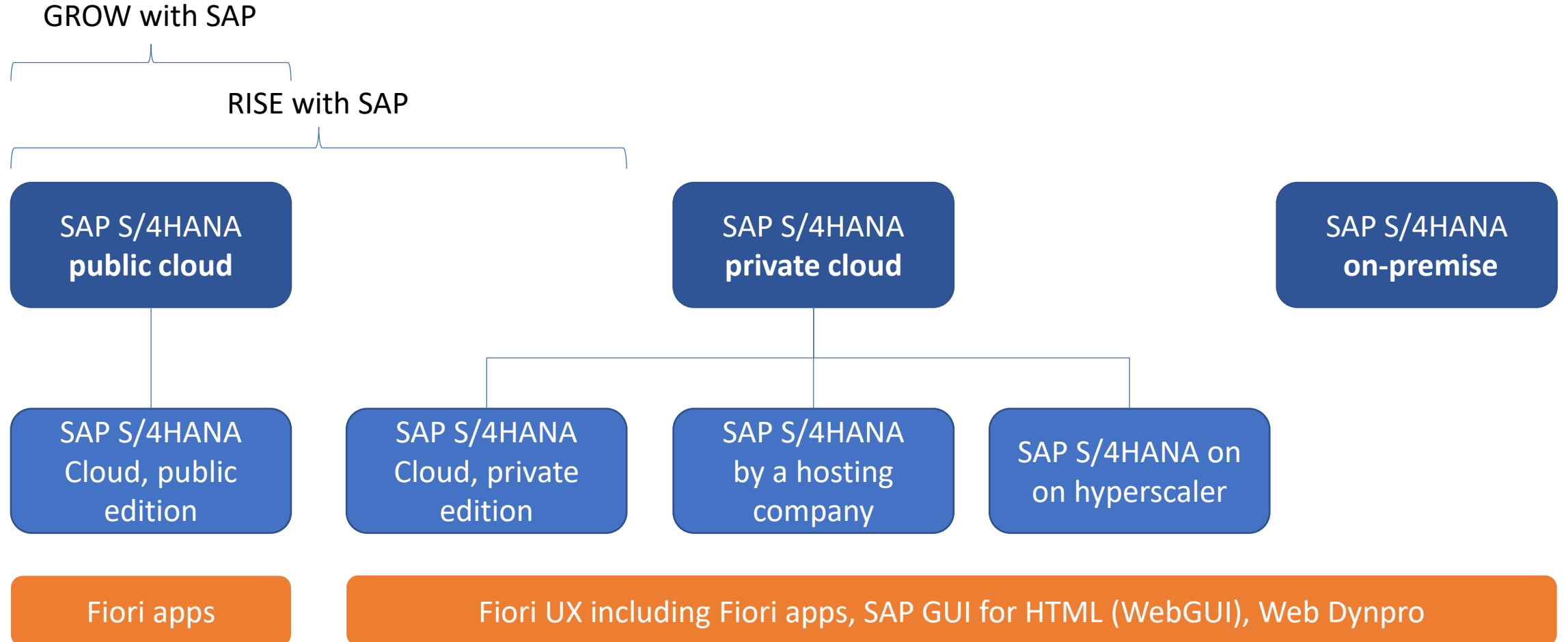


SAP's Fiori strategy

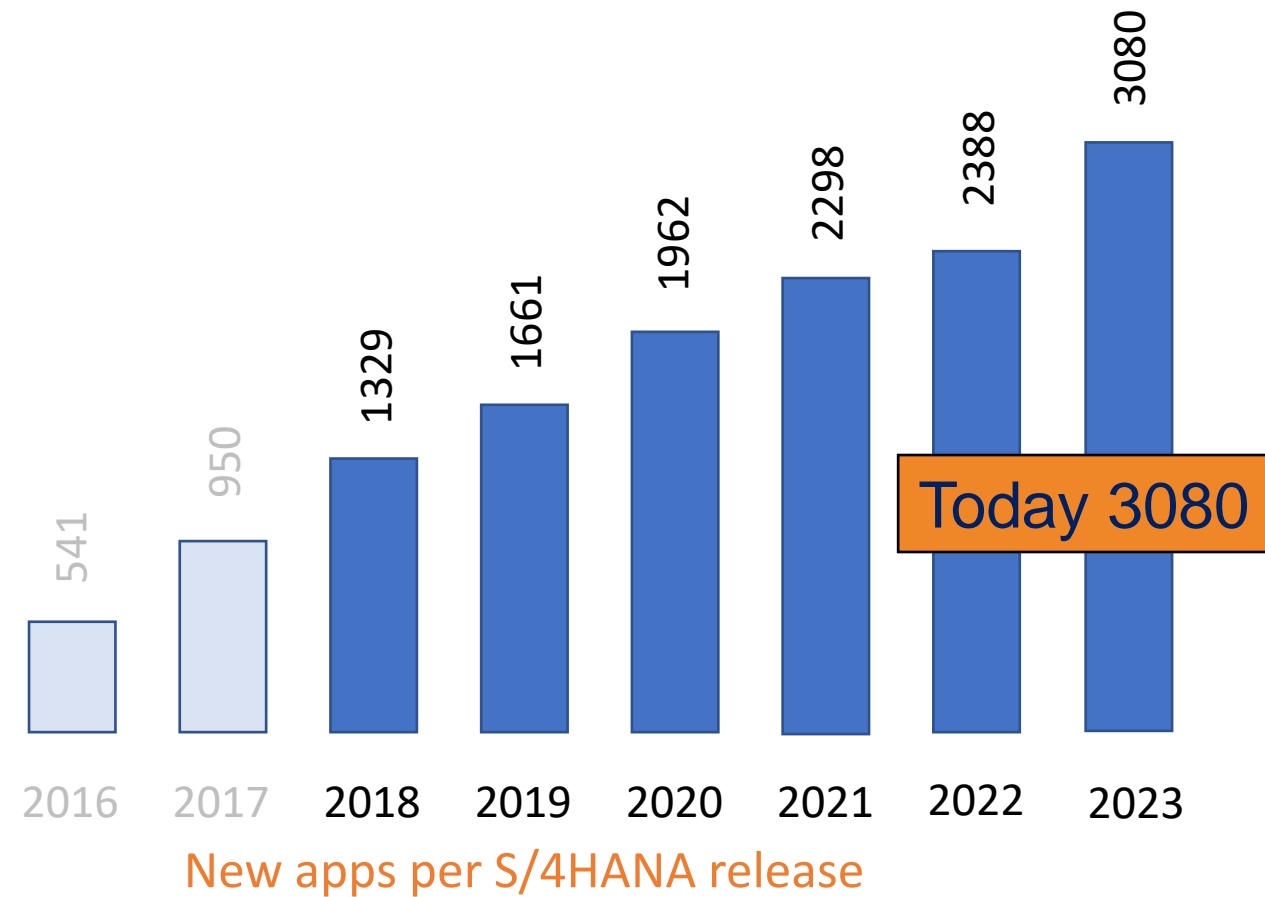
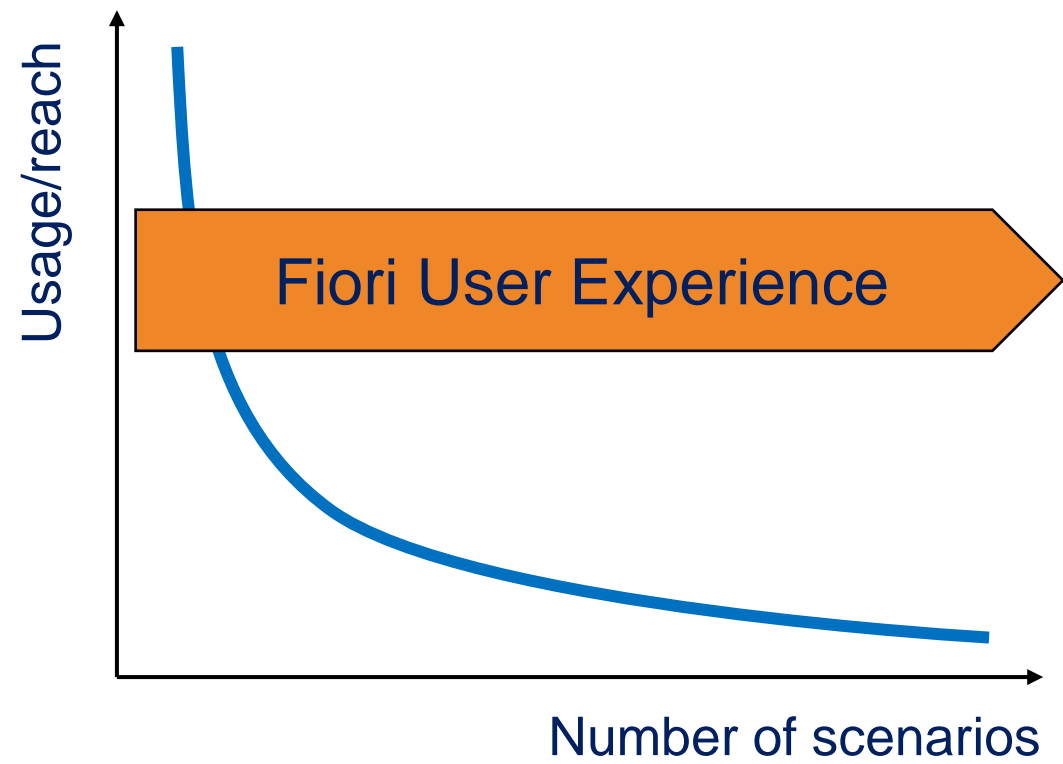
- Flavors of S/4HANA
- Evolution of Fiori
- Fiori in S/4HANA



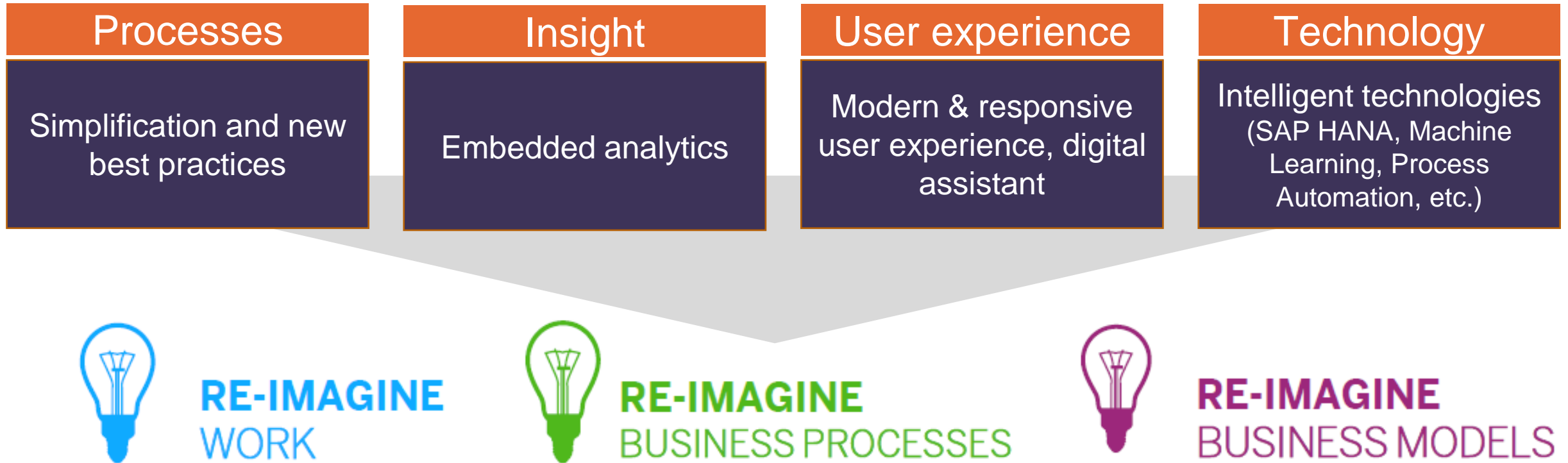
Flavors of SAP S/4HANA and Fiori



SAP's Fiori strategy



UX is one of the pillars of S/4HANA



It's not about a new ERP system.
It's about a **journey to re-image your business!**

Example

Processes

Manufacturing and Supply Chain can be optimized based on real-time and predicted demand

Insight

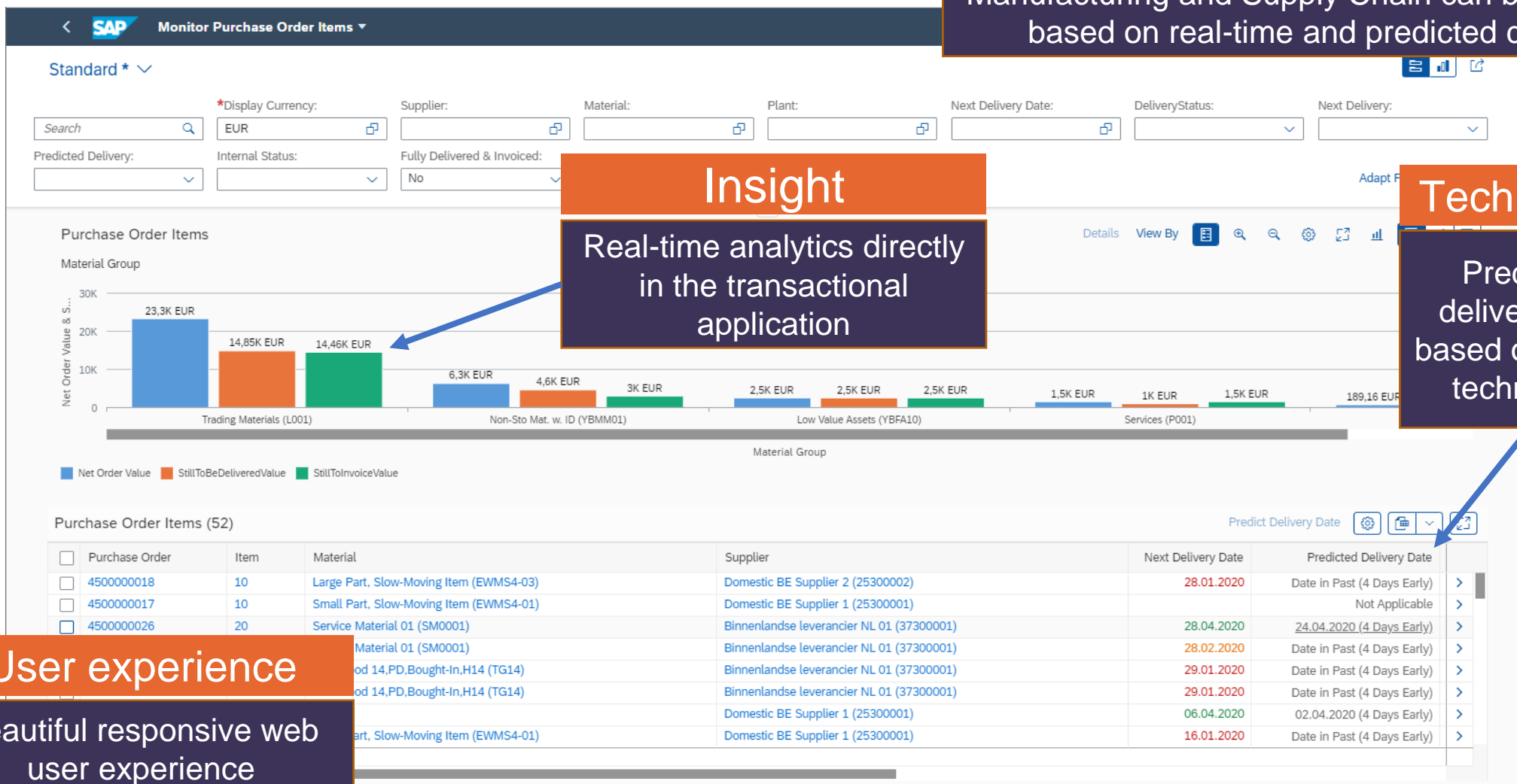
Real-time analytics directly in the transactional application

Technology

Predicted delivery date based on HANA technology

User experience

Beautiful responsive web user experience



7 best practices

- Establishing the value
- Roll-out and change management
- User experience
- Architecture
- Performance and support
- Development
- Skill building



Establishing the value – Start from the goals



Be more **MOBILE**



GUIDE me better



RESPOND faster



COLLABORATE better



Be more **INSIGHTFUL**



REACT faster



Be more **AUTOMATED**

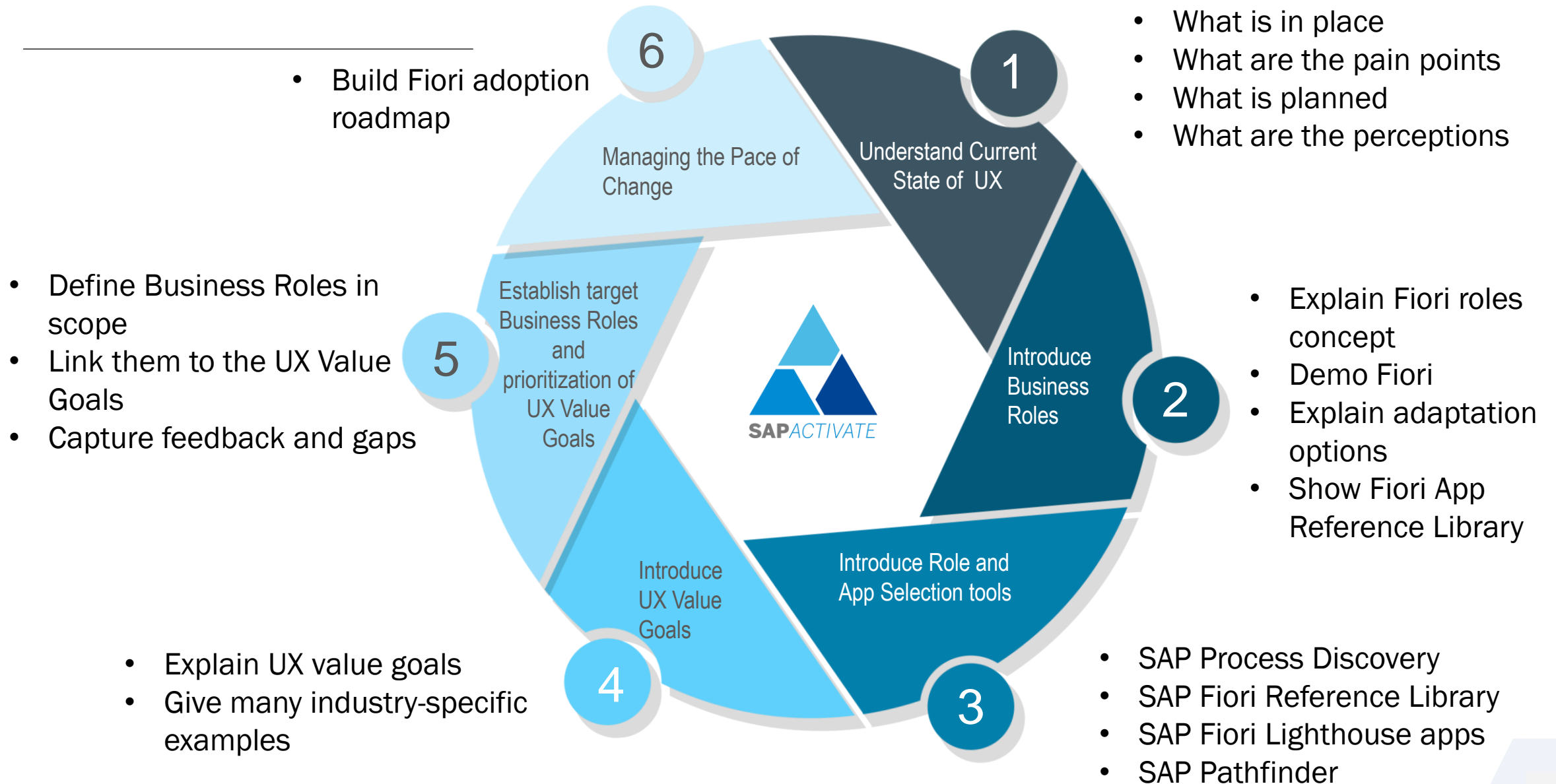


Be more **PROACTIVE**



Be more **ADAPTABLE**

Establishing the value – Follow SAP Activate



Establishing the value – Use app selection tools

SAP S

SAP Signavio Process Insights, Discovery Edition

BETA VERSION

Start your Transformation Journey with SAP Signavio Process Insights, Discovery Edition

(evolution of Process Discovery, SAP Innovation and Optimization Pathfinder on Spotlight)

Understand your current business process performance. Identify new functionalities from SAP S/4HANA, SAP Fiori apps, automation and intelligent technologies to support your business goals.


SAP

SAP Fiori Reference Library


Categories
All apps
All apps for SAP S/4HANA
All apps for SAP S/4HANA Cloud
SAP Fiori apps for SAP S/4HANA
SAP Fiori apps for SAP Business Suite
SAP Fiori lighthouse apps
Available via SAP Fiori Cloud

Welcome to the SAP Fiori Apps Reference Library!

Explore, plan and implement SAP Fiori, the latest user experience from SAP including all relevant content for the SAP Fiori launchpad.




Find out how to get the most out of SAP Fiori Apps Reference Library in the [help portal](#).



Find out how you can take advantage of SAP Fiori with our [SAP Fiori lighthouse scenarios](#) designed to deliver immediate business benefit to SAP S/4HANA customers.

SAP FIORI LIGHTHOUSE SCENARIOS UPDATED



You can learn more about SAP Fiori at our [website](#) or see SAP Fiori in action with a [free trial](#).

[Read More](#) about the SAP Fiori apps reference library.

SAP Fiori Lighthouse apps

SAP Fiori Lighthouse apps

Update July 2022

PUBLIC

SAP

SAP Pathfinder

How can you optimize your business processes?

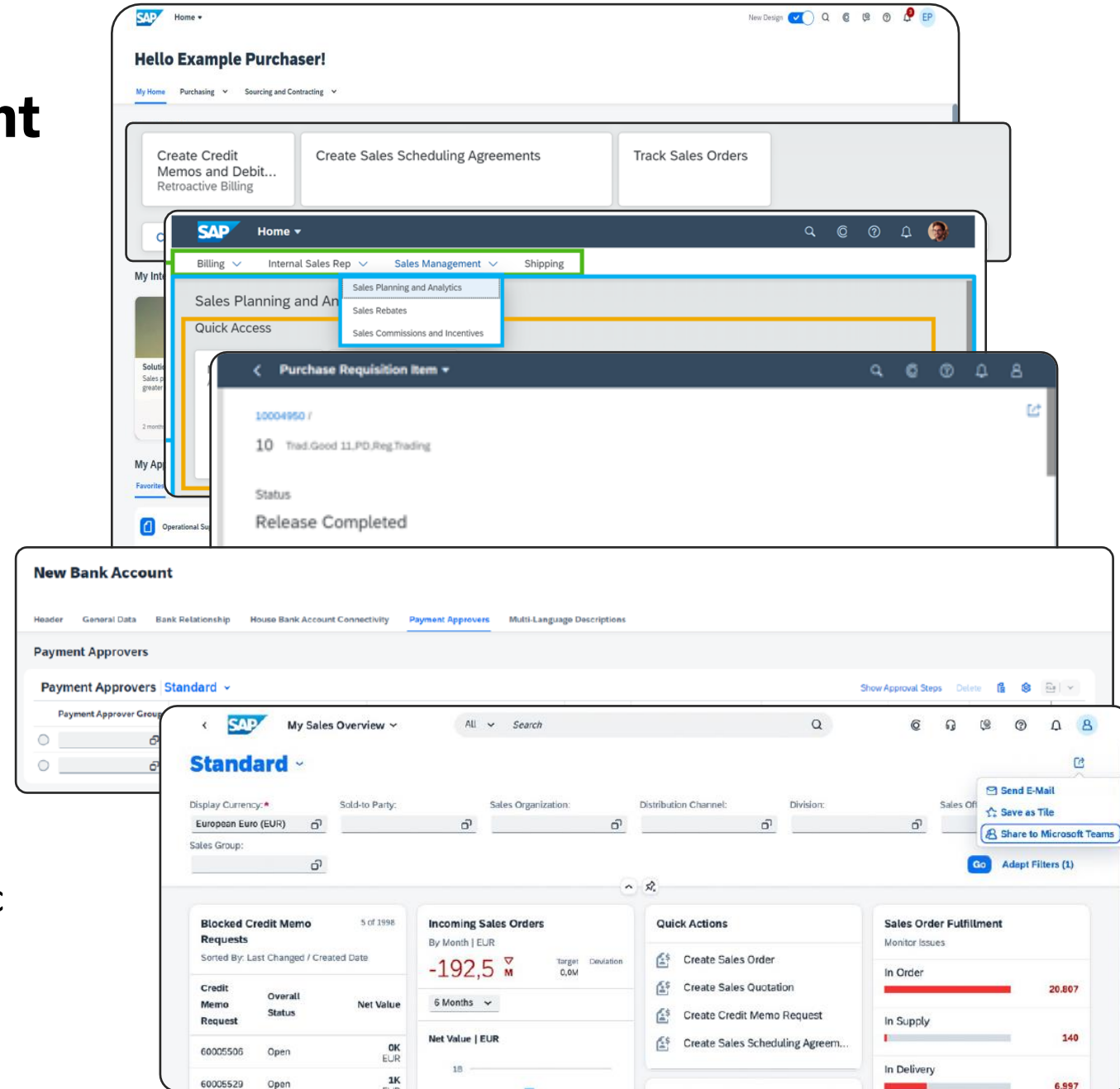
NEW The SAP Innovation and Optimization Pathfinder on Spotlight

Whether you are running on SAP ERP or whether you have already moved on the new SAP S/4HANA digital core, discover how SAP can help you to optimize and innovate your current system.

Contact Us

Roll-out and change management

- Implementation by roles and business catalogs
- Identify and include the best apps
- Power users
- New concepts in Fiori
 - Horizon Theme & My Home
 - Flat tiles & Links
 - Spaces and pages
 - Situation handling & notifications
 - Faster data entry via keyboard (only public edition)
 - Share to MS Teams

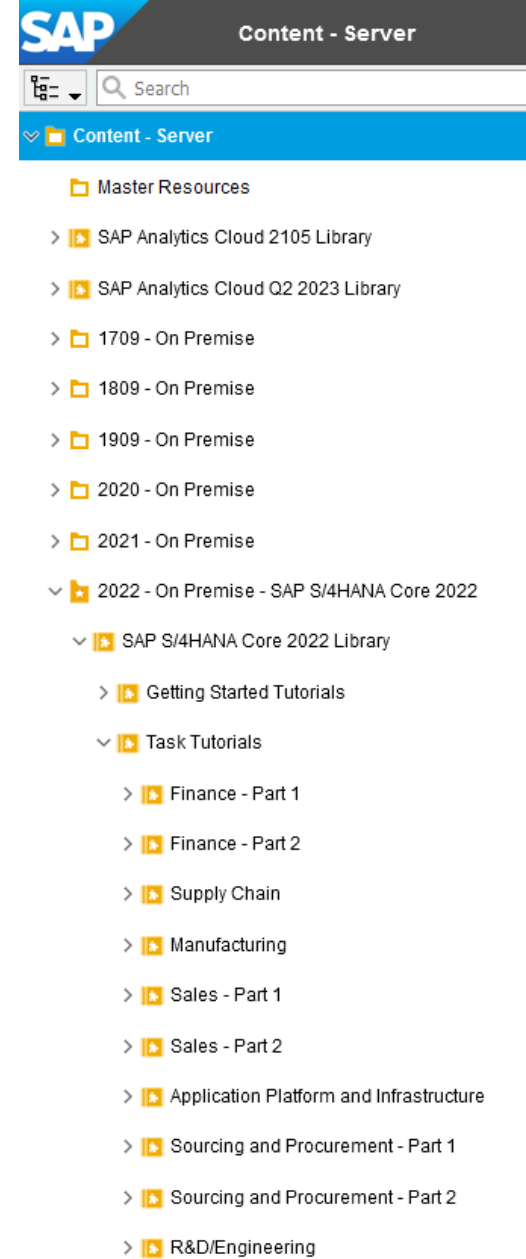


Change management

- Even simplification is a change
- Self-learning for end users
- Trainings/demos for selected scenarios
- User assistance (Enable Now, etc.)
- Make it easy to use
 - Provide single entry point
 - Keep the structure simple
 - Make the most of personalization to simplify the usage for end users (filters, tables, even app variants, My Home, Default Values)
- Invest time to learn the authorization concept
- Organize support and troubleshooting



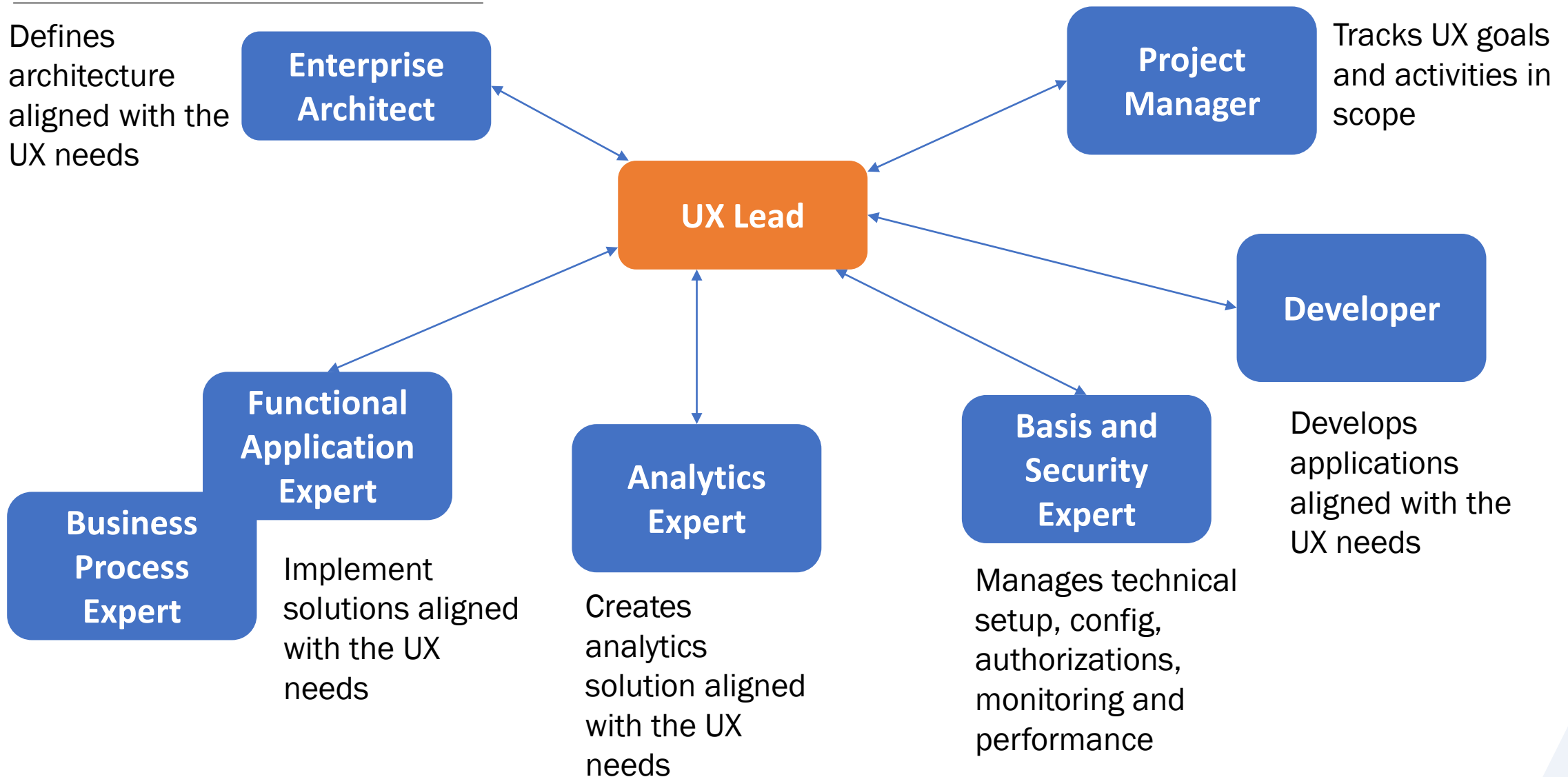
<https://education.hana.ondemand.com/education/wa/s4/index.html>



The screenshot shows the SAP Content - Server interface. At the top, there is a search bar and a navigation menu. The main content area displays a list of resources under the 'Content - Server' heading. The resources are organized into a tree structure with expandable/collapsible icons (chevrons). The visible resources include:

- Master Resources
 - SAP Analytics Cloud 2105 Library
 - SAP Analytics Cloud Q2 2023 Library
 - 1709 - On Premise
 - 1809 - On Premise
 - 1909 - On Premise
 - 2020 - On Premise
 - 2021 - On Premise
 - 2022 - On Premise - SAP S/4HANA Core 2022
 - SAP S/4HANA Core 2022 Library
 - Getting Started Tutorials
 - Task Tutorials
 - Finance - Part 1
 - Finance - Part 2
 - Supply Chain
 - Manufacturing
 - Sales - Part 1
 - Sales - Part 2
 - Application Platform and Infrastructure
 - Sourcing and Procurement - Part 1
 - Sourcing and Procurement - Part 2
 - R&D/Engineering

User experience - UX Lead in the project team



User experience – client choice

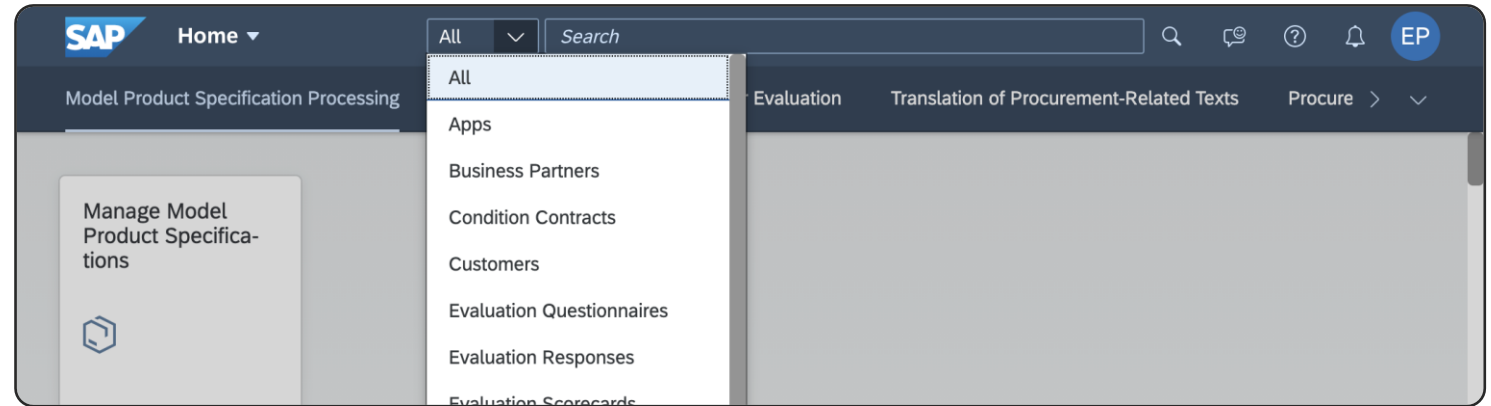
Options	Impact
Use only SAP GUI	Completely miss Fiori
Use only Fiori apps in the browser	Miss functionality Some power users may complain
Use SAP GUI <u>and</u> browser	Users need to login twice Slower Fiori adoption
Use Business Client	Users can run Fiori apps and Win GUI transactions
Use only the browser and add Web GUI transactions	More effort, but it helps the gradual roll-out of Fiori apps

User experience – Fiori launchpad design

Guiding Principle	Reason
Keep the page lean	Uncluttered layouts are easier to digest and identify the relevant app. For example: <ul style="list-style-type: none">▪ 1 space per role▪ 1-5 pages per space▪ 2-5 sections per page▪ 3-7 apps per section, but ideally not more than 25 apps for the whole page
Only frequently used apps	Rarely used tiles are not to be placed on the launchpad. Rarely used apps can be accessed by exception when required via the App Finder, Search or Home button.
Sort by frequency	Apps are ordered by usage frequency within a section. Most frequently used app is placed first for easiest access.
Insight before action	Analytical apps that assist users to prioritize work should be placed before action apps.
Focus on efficiency	Where the entry app contains links to the related actions which pass the context data, do not create additional tiles for the actions which would require unnecessary data entry.
New before old	Where possible, place SAP Fiori apps before classic UIs to encourage adoption of the new apps and encourage desired changes in user behaviors
Logical groupings	Group tiles by related functionality, e.g. Purchase Order apps together
Avoid near duplicates	Where a single app supports both single & multiple access, do not provide separate tiles. For example, Manage <business object> apps can show single and multiple objects.
Avoid Display links	Minimize clutter and maximize effectiveness by using Search to find and display objects. Do not create separate tiles/links for display apps where Search can be used instead.
Not all tiles are equal	KPI and dynamic tiles might cause high workload, as they are in constant communication with the back-end servers to update. Static tiles do not change; once they are loaded onto the FLP, they are not making any additional “calls” to update. For KPI and dynamic tiles try to define a refresh interval of 5 minutes or more

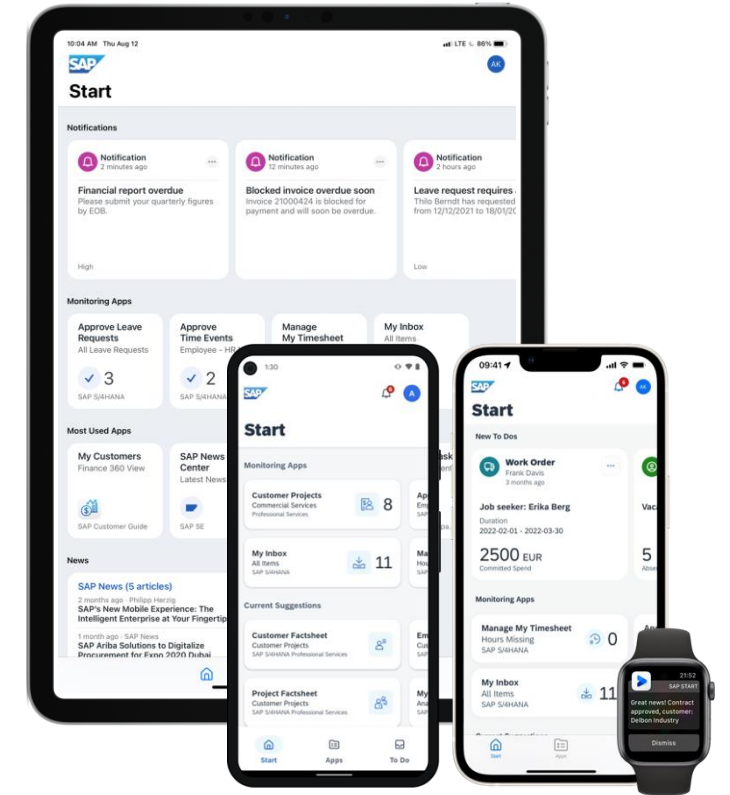
User experience – use search

- Limit the number of search connectors. There are 300+ to choose from.
- Set the default scope for the search to be Apps instead of All
- Don't activate it for users that don't need it
- The config is easier since S/4HANA 2021



Architecture

- SAP Build Work Zone standard edition if
 - Multiple/cloud systems
 - External access
 - Other use of BTP (custom development, integration, etc.)
 - SAP Mobile Start
- Otherwise: Embedded Front-End Server (don't recommend hub deployment, Enterprise Portal or Cloud Portal)
- Mobile experience options
 - SAP Mobile Start (requires SAP Build Work Zone)
 - Web application in browser (Reverse proxy, firewall, etc. if on prem)
 - Separate apps (SAP Build Apps, MDK, SDK)



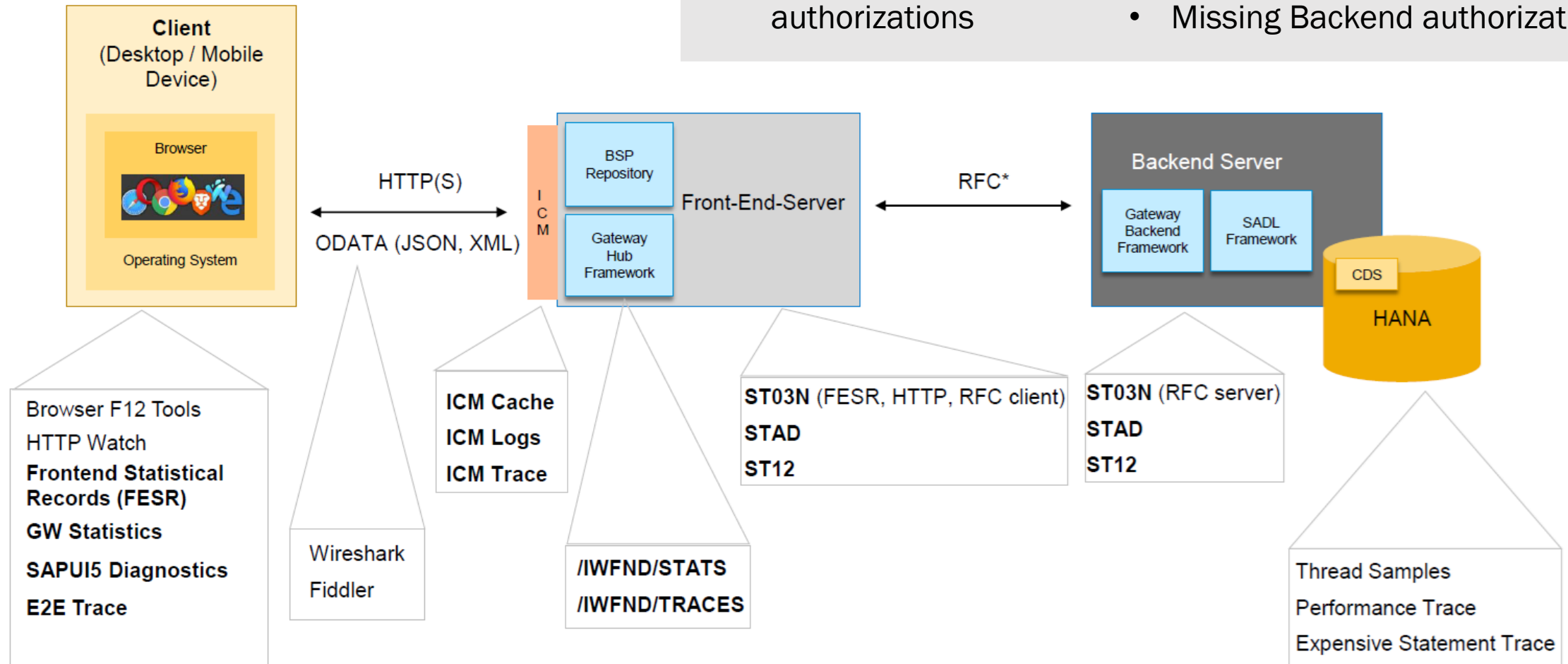
Performance and support

Fiori/FLP:

- Rendering errors
- Wrong app routing or navigation
- Missing tiles
- Missing Frontend authorizations

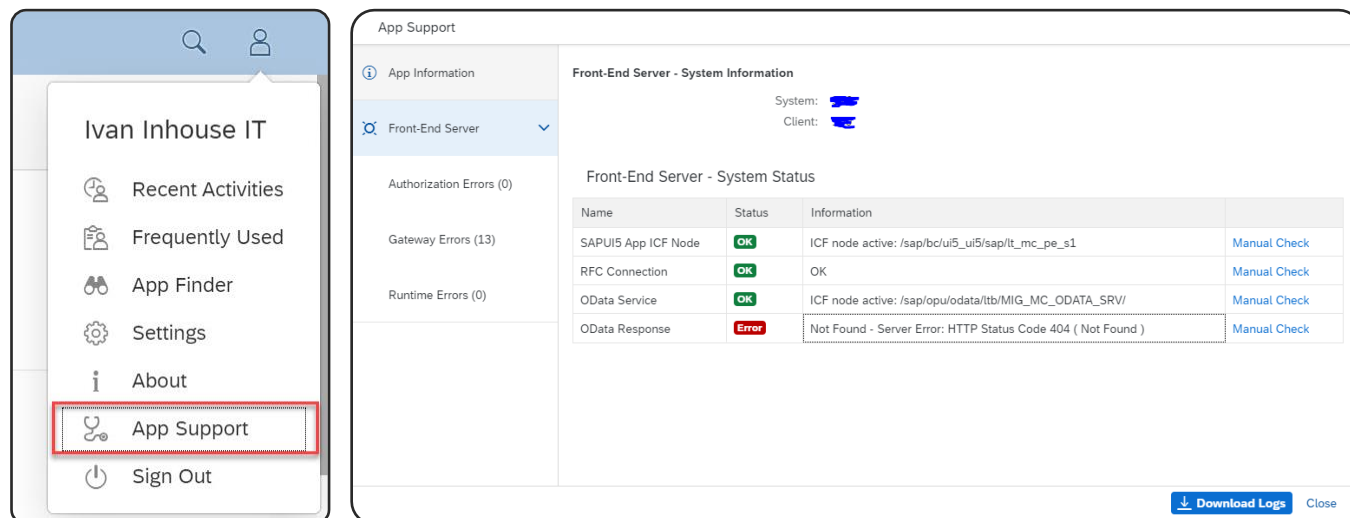
OData/Backend:

- Inactive OData services, CDS views, ABAP objects or Business Functions
- Missing / Wrong configurations or coding
- Missing Backend authorizations

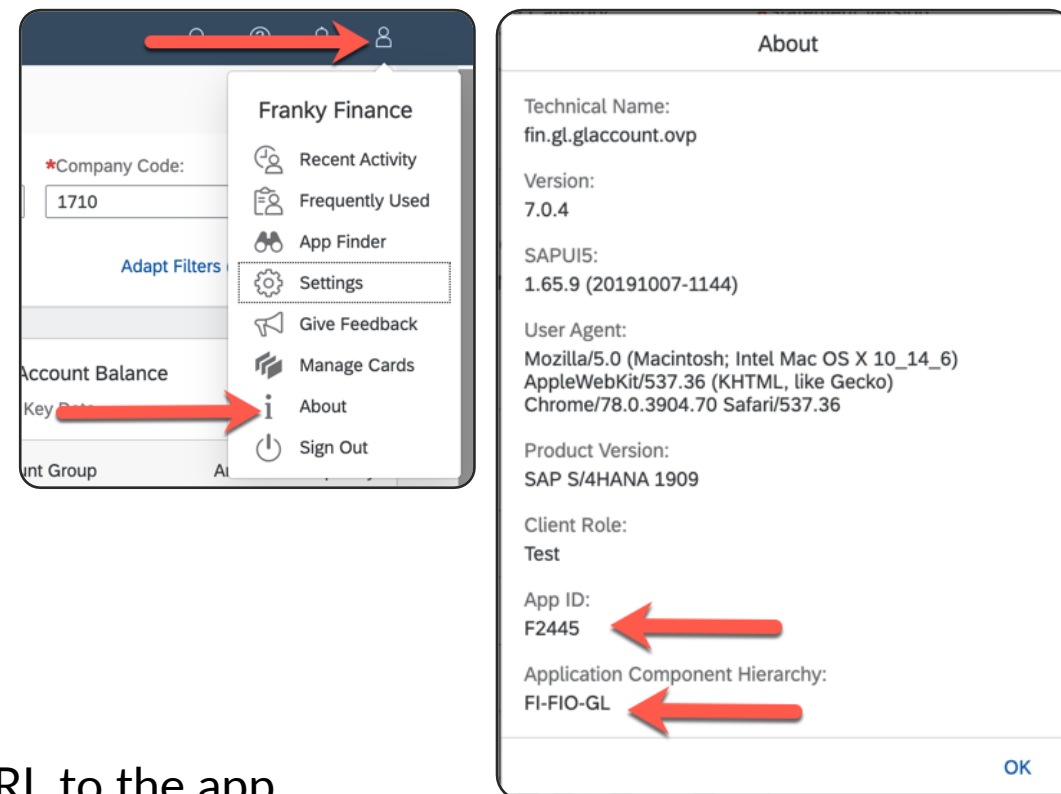


Performance and support

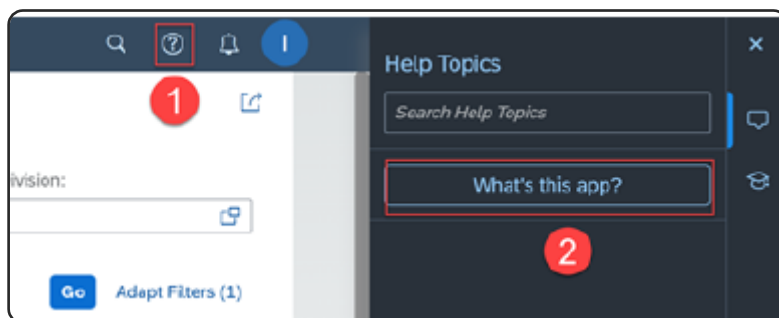
End users can find authorization issues using this plug-in



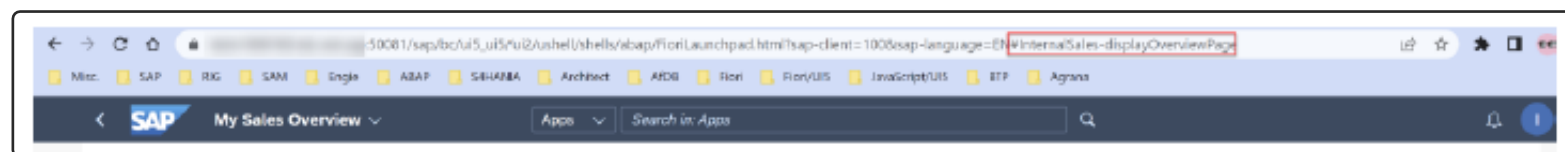
End users can find the App ID



Access SAP Help Product Documentation

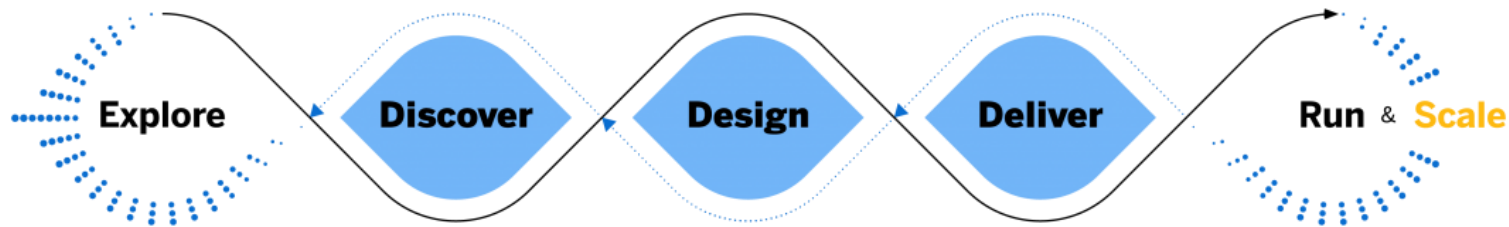


Look for the # in the URL to the app



Development

- Adapt before develop a new one.
- When building new apps, leverage SAP's design-led development process.

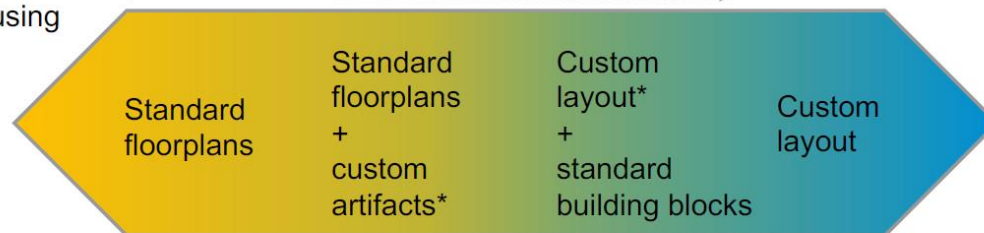


- If SAPUI5 app, use the Flexible Programming Model. If not SAPUI5 app, use SAP Screen Personas.
- No more either/or choice between Fiori Elements and SAPUI5 freestyle approaches thanks to the Flexible Programming Model

SAP Fiori elements
Metadata-driven
development using
annotations

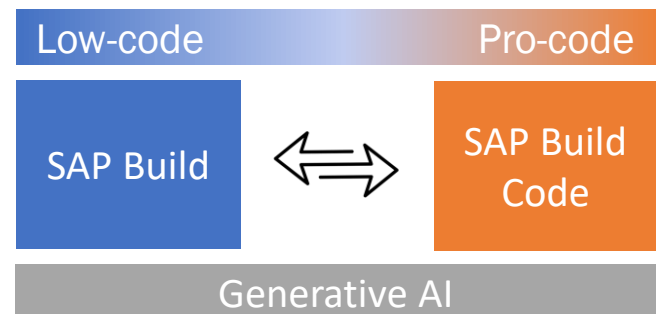
Flexible Programming Model

SAPUI5 freestyle
JavaScript framework
and UI library



Efficiency

Flexibility



Skill building

SAP Tutorials

- Fiori specific tutorials
<https://developers.sap.com/tutorial-navigator.html?tag=software-product%3Atechnology-platform%2Fsap-fiori>

SAP Learning

- Learning the Basics of SAP Fiori (20 hrs, free)
<https://learning.sap.com/learning-journey/learn-the-basics-of-sap-fiori>
- Developing SAPUI5 Applications (31 hrs, free)
<https://learning.sap.com/learning-journey/develop-sapui5-applications>
- Setting up SAP Mobile Start with SAP S/4HANA on SAP Build Work Zone (4 hrs, free)
<https://learning.sap.com/learning-journey/Setting-Up-SAP-Build-Work-Zone-standard-edition-and-SAP-Mobile-Start-with-SAP-S-4HANA>

openSAP

- SAP S/4HANA UX for Business and Functional Experts (November 7 - December 13, free)
<https://open.sap.com/courses/s4h34>

SAP Training

- Various trainings
<https://training.sap.com/content/sap-user-experience-fiori>

SAP Learning Hub

- SAP BTP Value Map - SAP Fiori
<https://learning-journeys-prod.cfapps.eu10.hana.ondemand.com/#/learning-journeys/learningJourney/73e850517461101498353d0ae4041860>

SAP Bootcamps

- 5 Steps to Fiori Bootcamp for Customers
https://www.sap.com/documents/2021/09/822c893a-fb7d-0010-bca6-c68f7e60039b.html?utm_source=linkedin&utm_medium=social&utm_campaign=5steps2Fiori

Wrap up

- SAP Fiori is strategic and it's a key pillar of SAP S/4HANA
- Implementing Fiori is a complex activity due to it's multiple aspects such as strategy, architecture, UX, performance, etc.
- This presentation covers the top 7 best practices

Where to Find More Information

- Microlearning - [Creating SAP Fiori launchpad layouts for custom business roles](#)
- SAP Activate – [Understanding the UX Adoption workshops](#)
- SAP Fiori Peak Performance – [Introduction & Top 10 Ways to Prevent Performance Issues](#)
- SAP Fiori for SAP S/4HANA – [10 health checks for the SAP Fiori launchpad](#)
- SAP Fiori for SAP S/4HANA – [Support Best Practice Recommendations](#)
- SAP Fiori for SAP S/4HANA – [Performance Optimization and Best Practice – Part 1 Tools and Tracing](#)
- SAP Community – [SAP Fiori](#)

Key Points to Take Home

- Establish the value and goals when implementing Fiori
- Create a phased roll-out plan
- Consider that UX is not just implementing nice apps
- Consider remote and mobile access in your architecture
- Get ready for smooth and scalable operations
- Use the most suitable development approaches
- Build skills as soon as possible

Thank you! Questions?

dr. Tamas Szirtes

tamas.szirtes@soapeople.com

<https://www.linkedin.com/in/tamasszirtes/>

Please remember to complete
your session evaluation.



SAPinsider.org

PO Box 982Hampstead, NH 03841
Copyright © 2023 Wellesley Information Services.
All rights reserved.

SAP and other SAP products and services mentioned herein as well as their respective logos are trademarks or registered trademarks of SAP SE (or an SAP affiliate company) in Germany and other countries. All other product and service names mentioned are the trademarks of their respective companies. Wellesley Information Services is neither owned nor controlled by SAP SE.

SAPinsider comprises the largest and fastest growing SAP membership group worldwide, with more than 750,000 global members.
