

Nov 2023

Cloud Myths and Misconceptions

Myths and Misconceptions of Running SAP S/4HANA in the Cloud

Eamonn O'Neill - Lemongrass

Alan Clarke - SUSE



SAPinsider
2023

What we will cover

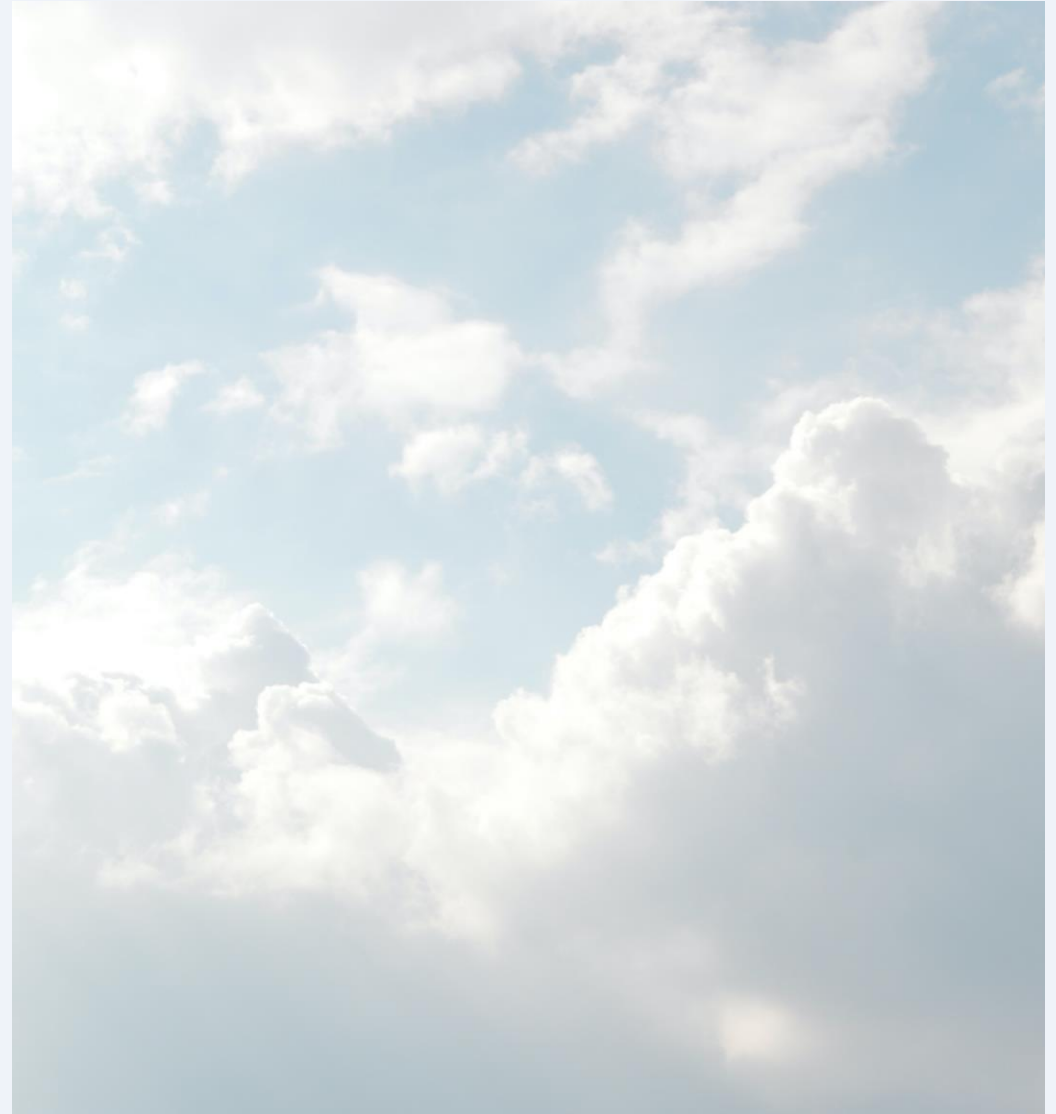
- Cloud or on-premise?
- Misconceptions and challenges cloud
- HA/DR concepts in the cloud
- Secure your SAP platform
- Benefits and surprises
- Team and Skillset



Running SAP on-premises vs. a cloud environment

Common and fundamental differences between running SAP on-premises vs. a cloud environment

- **SAP cloud is not a single platform**
 - From IaaS to SaaS. Each with its advantages and challenges.
 - Is not a real disjunctive between on-premise and cloud SAP platform as a whole
- **Cloud IaaS, is similar to on-premises**
 - Complete control, flexible and manageable.
 - Faster than on-premises
 - Ready-made and pre-tested platform
 - A design plan for infrastructure is needed. SAP project migrations still take time
- **Integrations**
 - Faster data transfer among the system as it allows simple integrations. Integrations in the Cloud Edition can be complex and involve security risks too.
- **Scalability**
 - If you want to scale up or down, you will find it much harder in the on-premises.



Common misconceptions and challenges

Running SAP in the cloud
what are some of the
common misconceptions
and challenges



Challenge 1: Long learning curve in the cloud, and many requirements to follow to be compliant



Challenge 2: High Availability

Misconception: Cloud is highly available by default.



Challenge 3: Operation

Misconception: Cloud needs less maintenance and can't have a drift from best practices.



Challenge 4: Achieve the speed promise in the cloud.

Misconception: everything deployed in the cloud is easy to do and can be done in a fast way



Challenge 5: Security

Misconception: Cloud platform is secure by default



Challenge 6: Integration. At the same time, we live in a heterogeneous world.



Cloud, Hybrid and Multicloud (Challenges and Mistakes)

Challenges

- Business continuity and reliability.
- HA continuous innovation is needed. Examples:
 - “Simple mount scenario” as recommended Azure scenario for HA deployments
 - “Fast Dying Index Server” customer request to SUSE to have a faster recovery

Common mistakes

- Focus on feature parity
 - Provider value lies in the depth of the expertise and the capability to help in the world’s most complex scenarios for the largest SAP workload.
- HA can be configured regardless of the scenario
 - HA is not simple, and a bad configuration can cause downtimes and large recovery times
 - Best practices continuous validation with tools like SUSE’s Trento are mandatory
 - Expertise and experience are critical



Secure SAP

Much more than just security. Key to ensuring business continuity

Secure

“certain to remain safe and unthreatened”

A Secure SAP

ensures business continuity removing internal and external threats

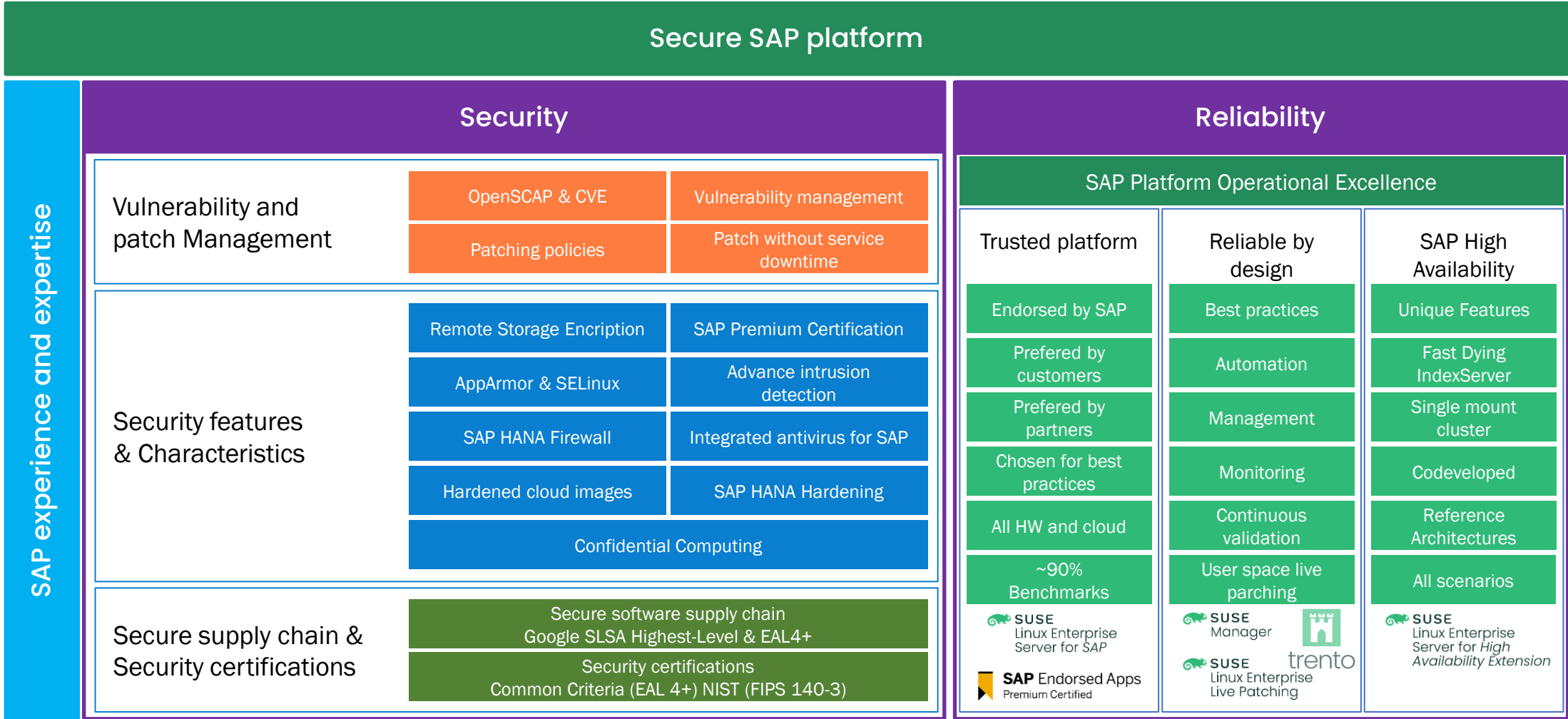
A Secure SAP Platform

is the foundation.
A **trusted** platform endorsed by SAP and its ecosystem that delivers **maximum security** with **minimum risk**



A secure SAP platform is the foundation of a secure business

Secure SAP platform



Multiple Benefits and a Surprise

• Benefits

- Cost - From capital to operating expenses / Flexibility - Scale cost according to needs
- Faster time to market – Scalability and Flexibility.
- Security – Joint approach customer/cloud provider on security.
- Concentration on Core Competencies

• Biggest Surprise:

- Cloud is not automatically less expensive by default
 - Hidden costs that might not be clear from the beginning (e.g. network traffic usage)
 - TCO includes the Day-2 Operation cost.
 - A trusted platform aligned with market best practices including the need to deploy management and monitoring tools to **avoid unexpected costs**
 - Vendor Connection



Wrap up

Be Prepared (Team and Skillset)

Set the responsibilities

- And review roles accordingly

Additional skill sets

- Like cloud service platform expertise, network management, development, operations (DevOps), cloud security...

Establish a lifelong learning practice

- personal needs to be trained constantly to keep up the pace of innovation.



Where to Find More Information

- <https://www.suse.com/cloud-for-sap/>
- Whitepaper: The definite guide to Moving SAP S/4HANA to the Cloud
 - Download [here](#)
- Why is the public cloud ideal for your SAP S/4HANA environment?
 - Read the [blog](#)



Key Points to Take Home

- There are common misconceptions and challenges by running SAP in the cloud
- Beware of challenges and common mistakes in the cloud
- A cloud is not automatically secure
- Customers see the greatest benefit
- Don't forget your skillset of your team



Eamonn O'Neill - Lemongrass

Alan Clarke - SUSE

Please remember to complete
your session evaluation.



SAPinsider



SAPinsider.org

PO Box 982Hampstead, NH 03841
Copyright © 2023 Wellesley Information Services.
All rights reserved.

SAP and other SAP products and services mentioned herein as well as their respective logos are trademarks or registered trademarks of SAP SE (or an SAP affiliate company) in Germany and other countries. All other product and service names mentioned are the trademarks of their respective companies. Wellesley Information Services is neither owned nor controlled by SAP SE.

SAPinsider comprises the largest and fastest growing SAP membership group worldwide, with more than 750,000 global members.
