



# Transitioning From SAP Solution Manager To SAP Cloud ALM: Streamlining Implementation And Operations

**Tim Steuer, SAP SE**

**SAP**insider  
**2023**

A woman with blonde hair and glasses, wearing a black vest over a floral patterned shirt, is smiling and looking towards the right. She is sitting at a wooden table with a white coffee cup in front of her. Other people are visible in the background, some looking towards the camera and others looking away.

## In This Session

---

Learn about SAP's ALM strategy

Find out what the transition to SAP Cloud ALM means for you

See available accelerators and key resources to help you accelerate your move



# SAP's ALM strategy

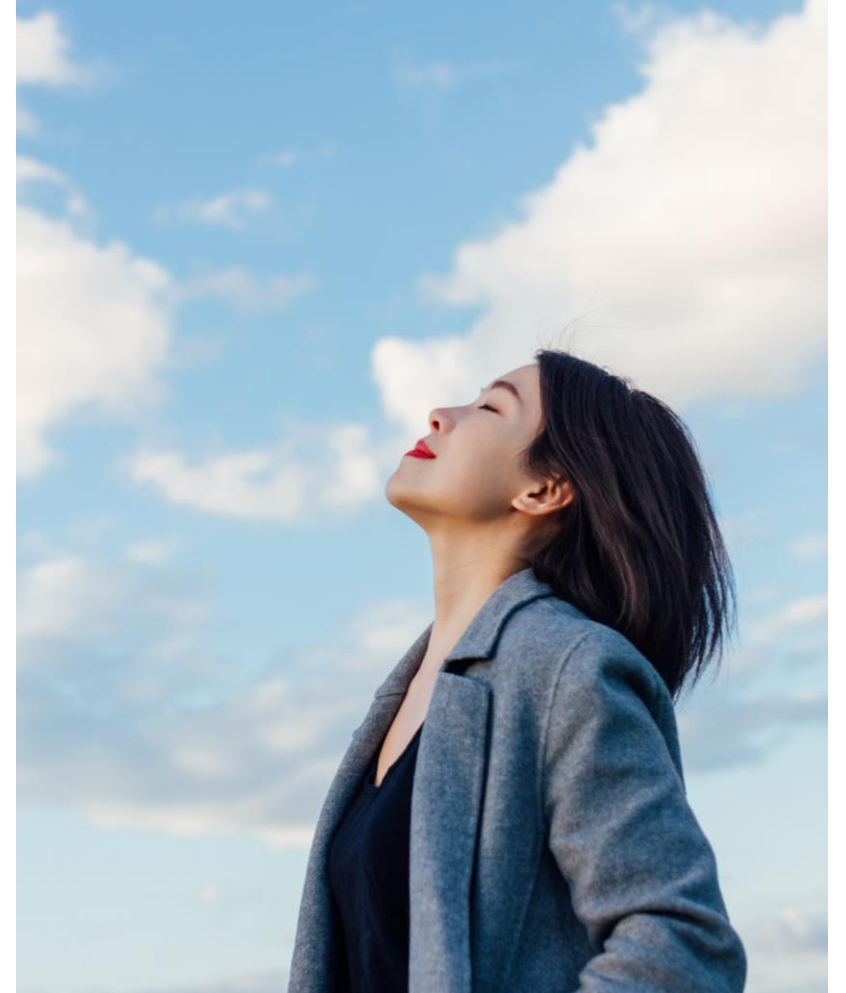
**SAP Cloud ALM** is designed to support ALM for the **intelligent, sustainable enterprise**, including SAP S/4HANA (all deployments).

**SAP Cloud ALM is attractive for SAP Solution Manager customers:** Cost of operation and maintenance, functionality, ease of use and adoption, foundational support for today's customer landscape (SAP Business Suite, SAP Business Warehouse, PI/PO), transition support.

SAP Solution Manager 7.2 **mainstream maintenance** ends Dec. 31, 2027.

**SAP Cloud ALM** is the **next-generation ALM solution** for SAP customers. SAP Cloud ALM is an independent new product line. SAP **recommends** SAP Cloud ALM as the go-to solution for ALM.

The **SAP Focused Run solution** addresses SAP-centric service providers and hybrid customers with advanced needs or significant on-premise footprint. **It can be used as a complement to SAP Cloud ALM.**

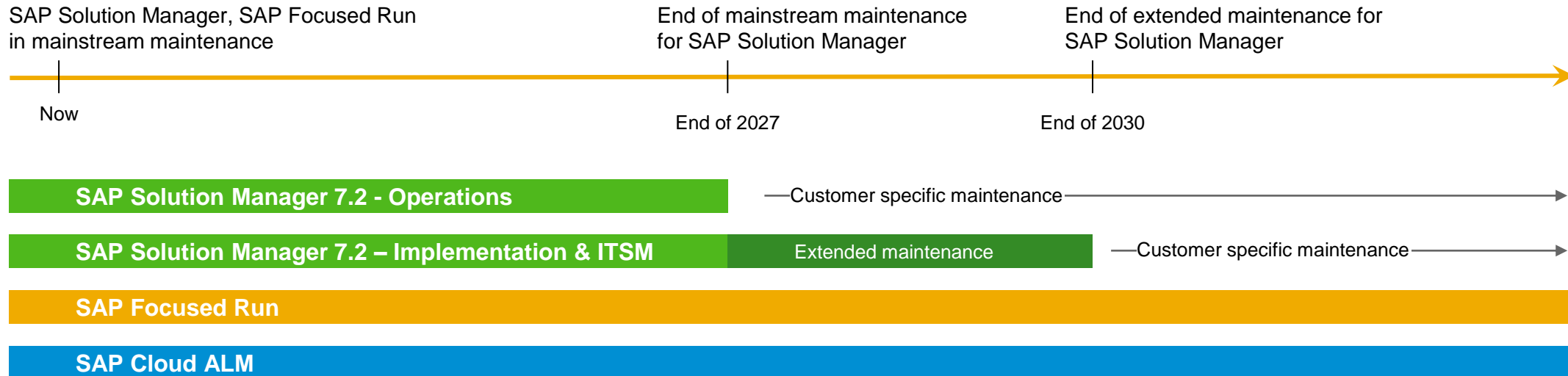


# SAP ALM Platforms – Planned Product Availability Strategy

## SAP Solution Manager follows the maintenance strategy of the SAP Business Suite

- Extended maintenance for process management, test suite, change & release management and ITSM in SAP Solution Manager 7.2 is automatically included in the optional extended maintenance for the SAP Business Suite 7
- SAP Solution Manager 7.2 is supported beyond 2030 – in customer specific maintenance\*
- There are **no plans for further releases** after SAP Solution Manager 7.2

**SAP Cloud ALM and SAP Focused Run are not dependent on the SAP Business Suite, allowing mainstream maintenance beyond 2030. SAP plans no new on-premise products in the ALM portfolio.**

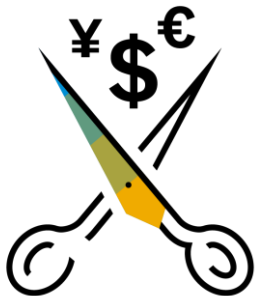


# SAP Cloud ALM: Facts and figures

## License and cost

Included in SAP Enterprise Support and Subscription

- Maintenance and operations by SAP
- Included memory: 8 GB
- API usage: 8 GB outbound data transfer per month



## Supported Solutions

Designed for cloud and hybrid customers

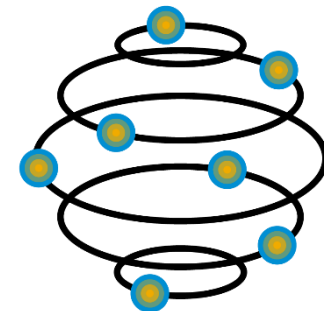
- Cloud solutions from SAP
- On-premise ABAP solutions (SAP S/4HANA, SAP Business Suite, SAP BW)
- PI/PO integration monitoring
- Non-SAP solutions



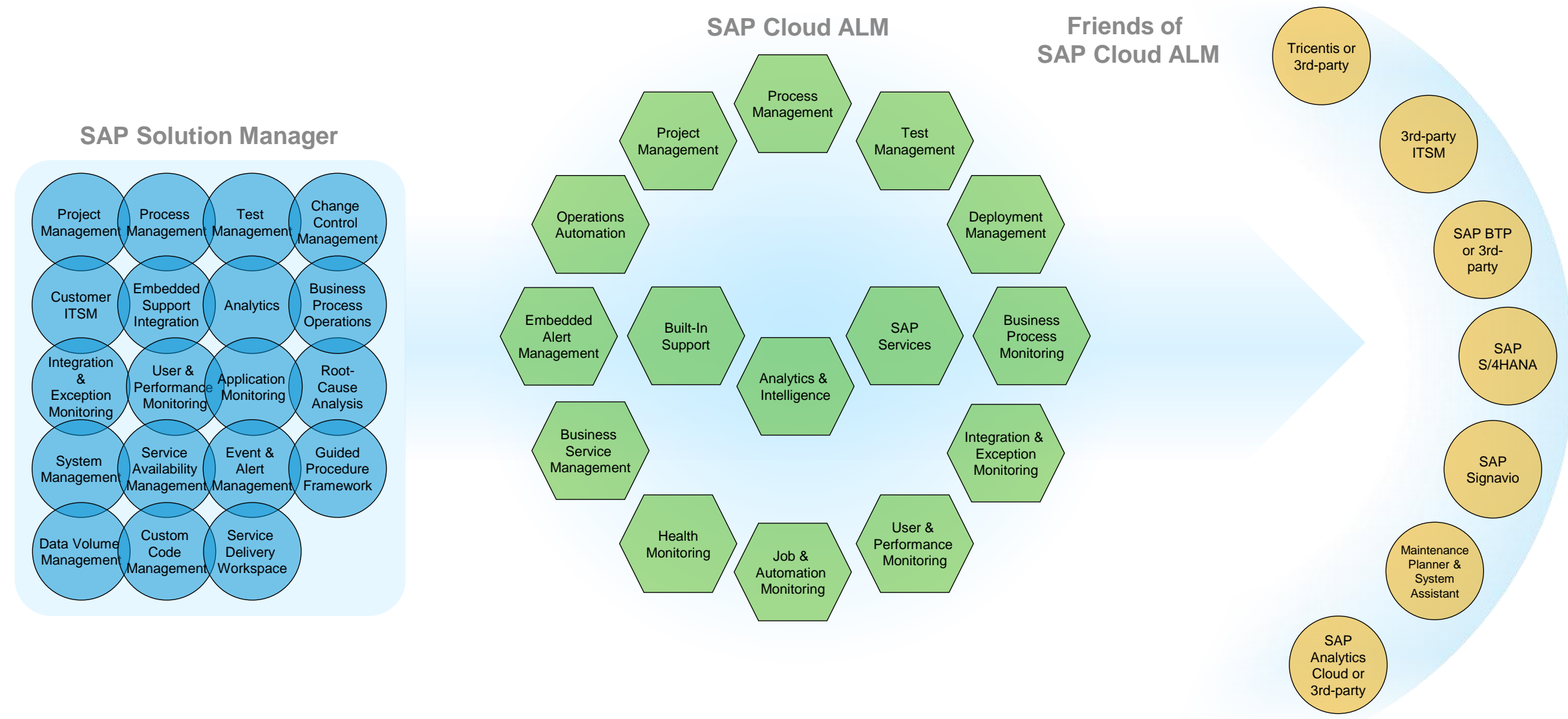
## Delivery and update model

Cloud-native

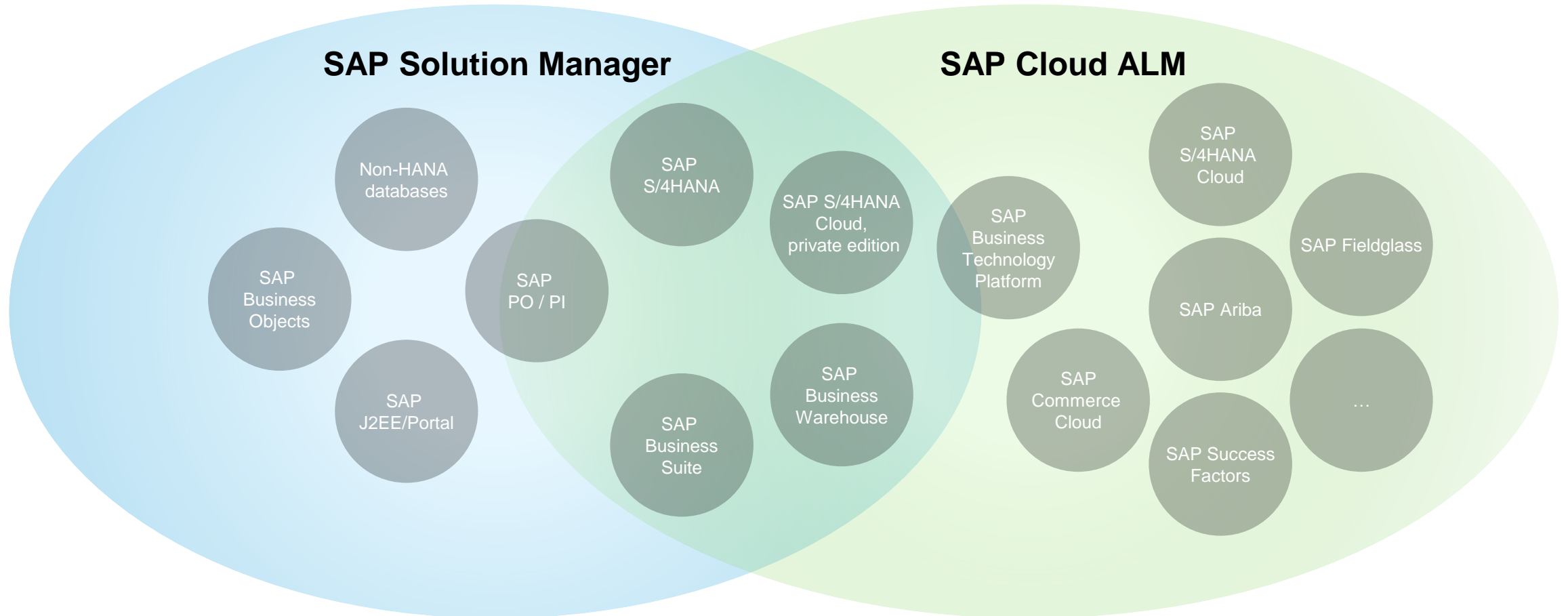
- Customer owned SaaS
- Available in 15 minutes
- Daily integrated delivery
- Bi-weekly feature release



# Functionality



# Recommended ALM solution



This is the current state of planning and may be changed by SAP at any time.

# **Transition to SAP Cloud ALM**



# From SAP Solution Manager to SAP Cloud ALM

**All SAP Solution Manager customers should plan to move to SAP Cloud ALM.**



Adopt SAP Cloud ALM for service and operations **NOW**

- Less customer effort for updates
- Ease of use and consumption
- Simplified monitoring without agents
- Additional monitoring use cases
- SAP service delivery integrated

Use SAP Cloud ALM for fast-paced cloud implementations **NOW**

Adopt SAP Cloud ALM for implementation **at your own pace**

- Complete your move to SAP S/4HANA
- More functionality for Testing, Deployment Management and Solution Documentation is planned for 2023/24
- Advanced functionality for Deployment Management and Solution Documentation planned for later

# Complement your operations needs with SAP Focused Run

**SAP Focused Run can complement SAP Cloud ALM for advanced operations use cases.**



## Reasons to add SAP Focused Run:

- Dedicated system management required
- Large on-premise landscapes and high-volume application monitoring
- Multiple customer enablement
- Embedded operation automation & cross use-case analytics

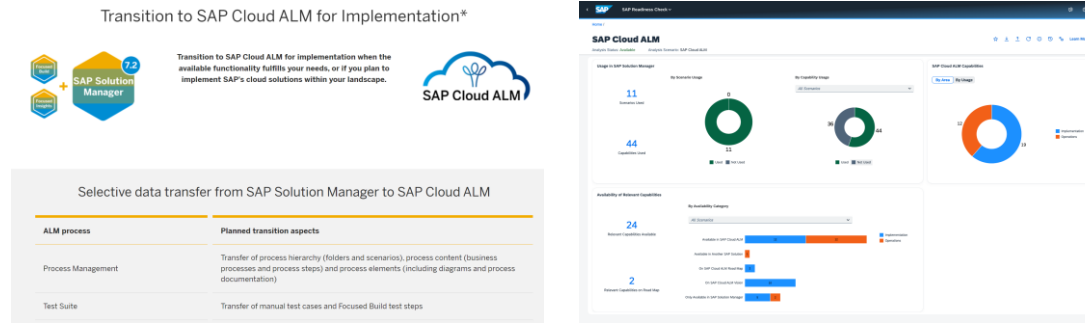
# **Transition recommendations**

# What can you do NOW, when...

What can you do NOW, when...	Next steps (“Now”)
... you only use SAP Solution Manager for <b>Monitoring &amp; Operations</b> , but not for Solution Documentation or Testing, or Change Control?	Understand the different operations use cases in SAP Cloud ALM, Request your own tenant, and start using SAP Cloud ALM for Operations
... your company is starting a <b>cloud implementation project</b> (i.e. SAP S/4HANA Cloud, SAP SuccessFactors)?	Set up SAP Cloud ALM and use it for the implementation project
... you have invested in <b>Solution Documentation and/or Test Suite</b> in SAP Solution Manager 7.2?	Continue to use SAP Solution Manager, follow the SAP Cloud ALM roadmap for migration tools & best practices, and evaluate SAP Cloud ALM for Operations
... you are using Change Request Management ( <b>ChaRM</b> ) and/or are in a <b>regulated</b> environment?	Continue to use SAP Solution Manager, follow the SAP Cloud ALM roadmap for migration tools & best practices, and evaluate SAP Cloud ALM for Operations



# I want to transition from SAP Solution Manager\* “



Transition Center for the  
move to SAP Cloud ALM

Readiness Check for  
SAP Cloud ALM

Implementation Services

Transition methodology to  
SAP Cloud ALM\*

Tools for selected data transfer of solution  
documentation and test cases\*

Now

Mid 2024

Use your transition to rethink and simplify your ALM processes.

\*This is the current state of planning and may be changed by SAP at any time.  
SAP Solution Manager 7.2 needs to be at least at SPS15 for successful transition.



# Operations

Monitoring/operations capabilities do not require data migration!

Steps for transition:

- Familiarize with the SAP Cloud ALM for operations use cases
- Set up SAP Cloud ALM
- Configure the capabilities you want to use
- Sunset monitoring activities in SAP Solution Manager

# Implementation

The following data requires:

- Business process hierarchy
- Documents
- Libraries
- Custom processes
- Test Cases

# Transition approach

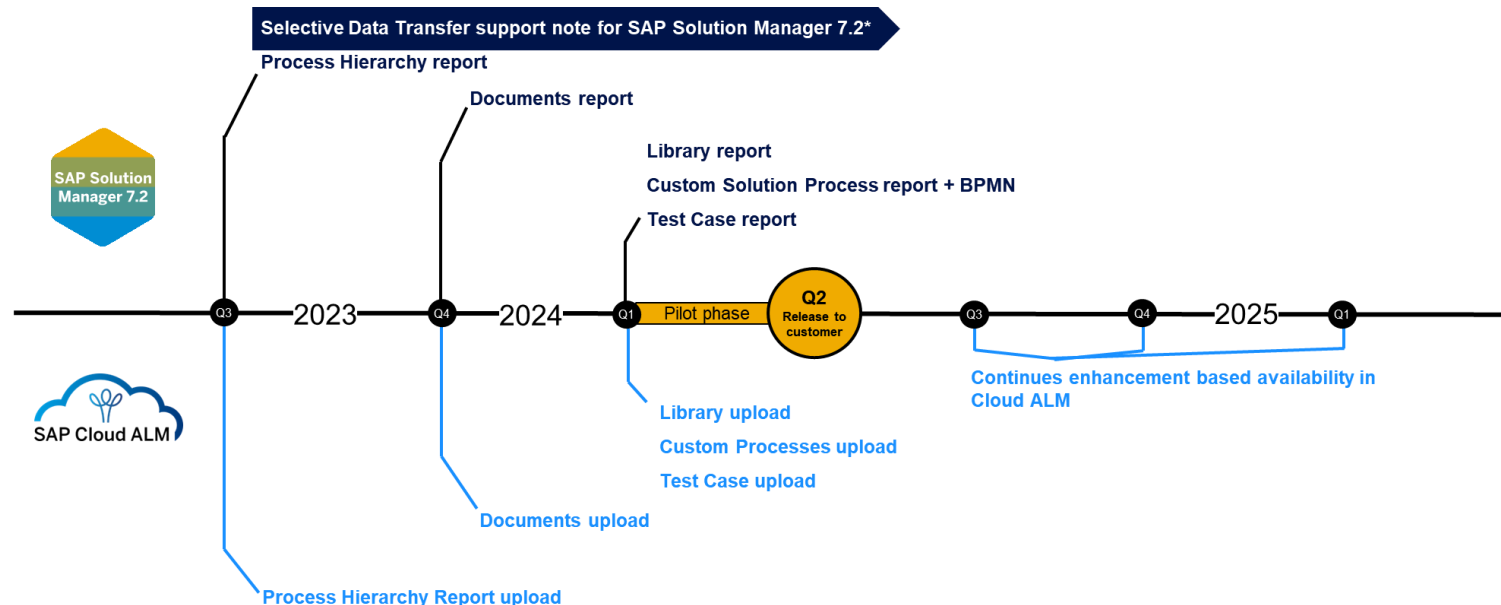
Run SAP Readiness Check for SAP Cloud ALM now

Study transition methodology to SAP Cloud ALM\*

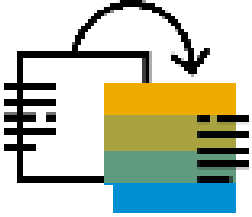
Perform initial transfer for selective data (i.e. by solution, branch, scope)\*

Manual test cases that are part of the scope are transitioned as part of solution documentation\*

For Tricentis Test Automation with SAP Solution Manager: Migration option planned for 2025\*

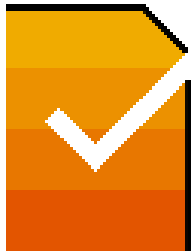


# Selective Data Transfer



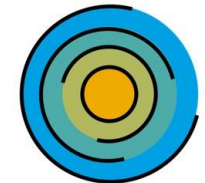
The ***Selective Data Transfer*** covers the migration of relevant data **from SAP Solution Manager to SAP Cloud ALM**.

It allows to **define a tailored scope** with the flexibility to **modify the data** in one step. The approach allows to combine **redesign of ALM processes** with **retaining important data** aligned to secure your investments.



Customers should use the **SAP Cloud ALM Readiness Check** to **identify their functional requirements and define priorities** while aligning these to their core project planning (scope, time and budget).

To give **customer guidance** a **SAP Cloud ALM transition roadmap** is provided based on SAP Activate Methodology.



**SAP Activate**

# Change Control Management

In Change Control Management, data migration is not provided.

Your transition in this capability depends on your footprint / actual usage of Change Request Management (“ChaRM”) in SAP Solution Manager.

- You are not using ChaRM → Deployment Management in SAP Cloud ALM might improve your software logistics and help stabilizing your environment. As setup and onboarding efforts are fairly low, this might be a quick win!
- You are using ChaRM → make yourself familiar with deployment management in SAP Cloud ALM, follow the SAP Cloud ALM roadmap and move when all you need is there!
- You are using ChaRM in regulated environments / complex landscapes → Follow the SAP Cloud ALM roadmap and wait, until functionality and best practices are available



# Guidance and Support for the Transition to SAP Cloud ALM

SAP supports you with

- Readiness Check for SAP Cloud ALM
- Transition methodology to SAP Cloud ALM \*
- Roadmap and Implementation Services
- Tools for selected data transfer of solution documentation and test cases \*
- APIs for data transfer and 3<sup>rd</sup>-party integration
- Guidance for typical customer situations
- All you need to know in the SAP Support Portal

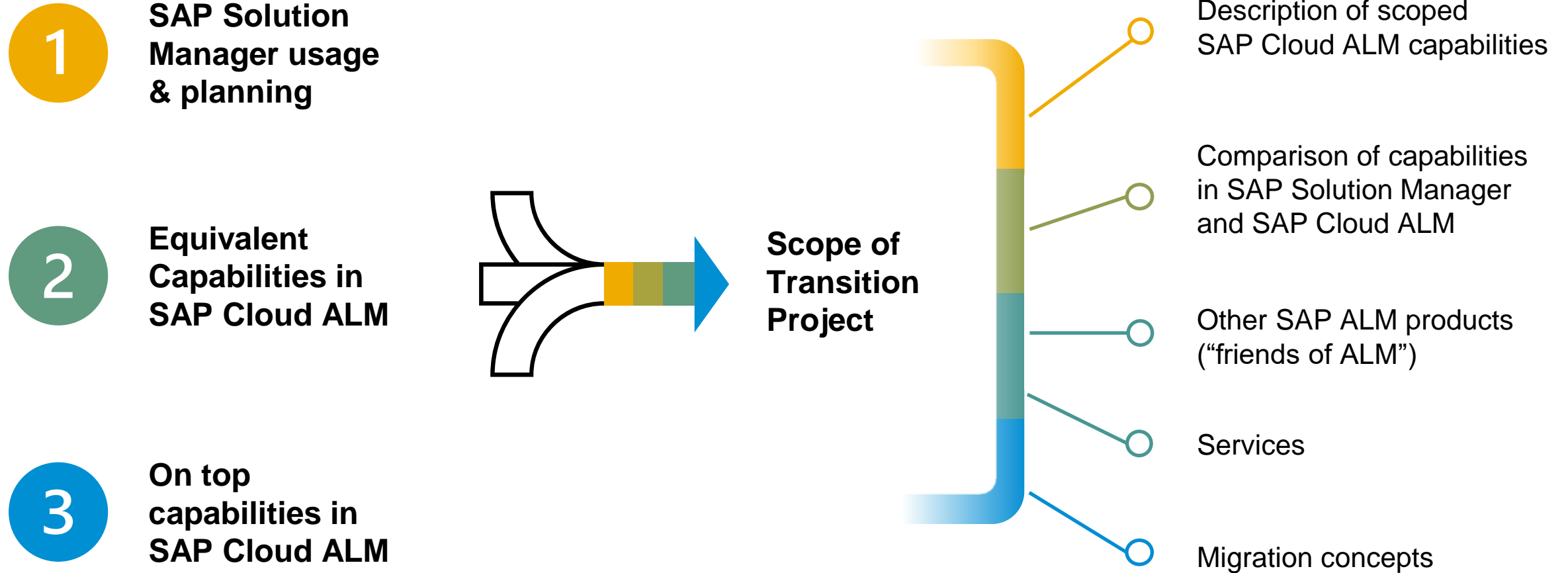


• **Use your transition to SAP Cloud ALM to rethink and simplify your ALM processes**

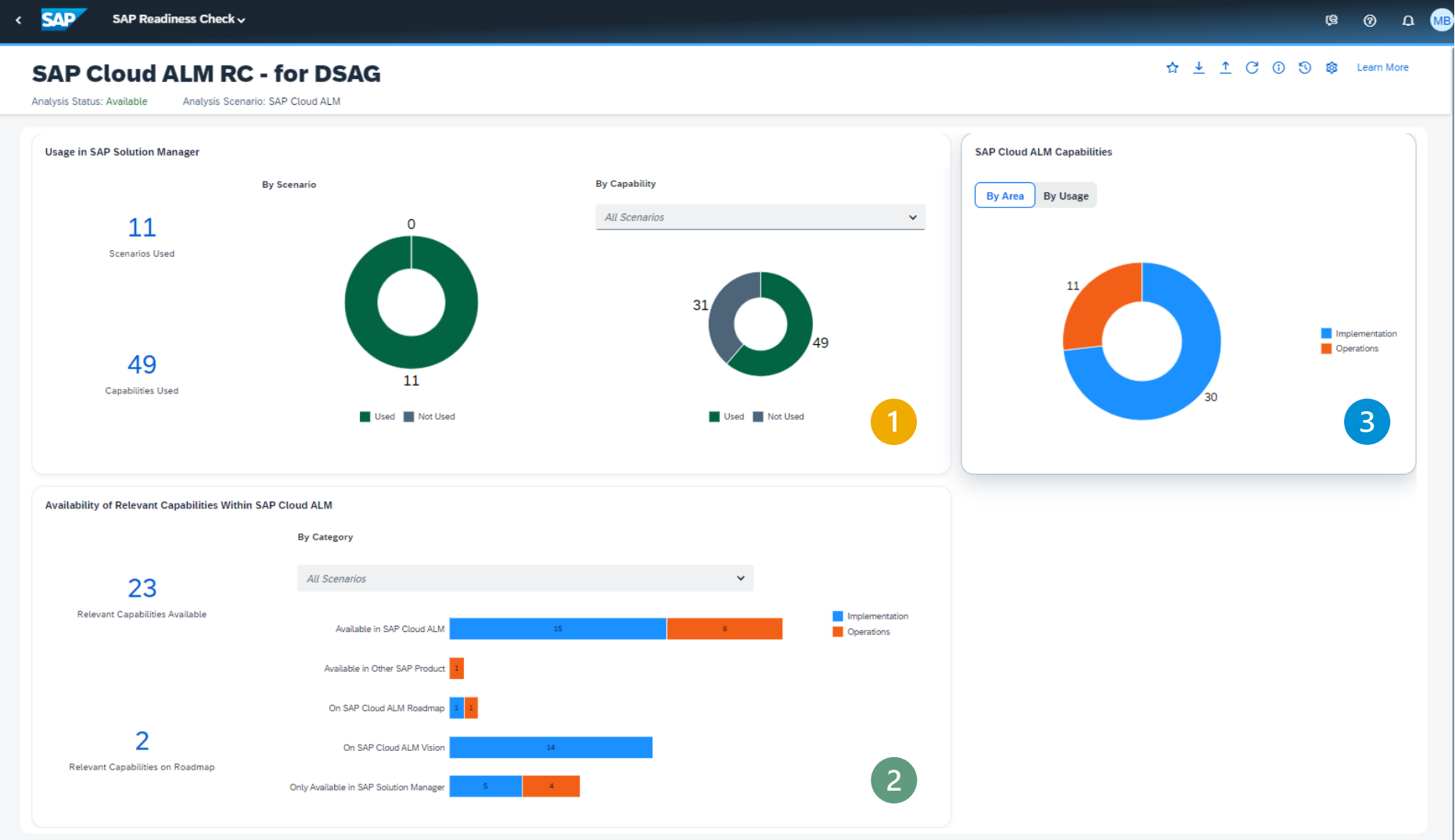
# **SAP Readiness Check for SAP Cloud ALM**

# Planning a Transition Project

## SAP Readiness Check for SAP Cloud ALM



# Summary Dashboard



- 1 SAP Solution Manager usage & planning
- 2 Equivalent Capabilities in SAP Cloud ALM
- 3 Relevant on top capabilities in SAP Cloud ALM

# SAP Solution Manager usage details

<

SAP

SAP Readiness Check ▾

🗨

🔍

🔔

MB

Usage in SAP Solution Manager

Analysis: SAP Cloud ALM RC - for DSAG

Learn More

Filter

Q

↕

Scenarios (11)

Implementation

Project Management  
2 of 5 Used

Process Management  
12 of 13 Used

Requirements Management  
2 of 2 Used

Change Control Management  
8 of 22 Used

Test Management  
8 of 11 Used

IT Service Management  
1 of 2 Used

Custom Code Management  
2 of 4 Used

Operations

Application Operations  
7 of 11 Used

Test Management

The following capabilities are part of the Test Management scenario in SAP Solution Manager.

Manual Testing

Relevant: YES

Used

Test Steps

Relevant: YES

Used

Component-Based Test Automation (CBTA)

Relevant: NO

Not Used

Test Automation Framework

Relevant: YES

Used

Business Process Change Analyzer (BPCA)

Relevant: YES

Used

Scope and Effort Analyzer (SEA)

Relevant: YES

Used

Analytics

Relevant: NO

Not Used

Test Planning

Relevant: YES

Used

Test Execution

Relevant: YES

Used

Defect Management

Relevant: YES

Used

Test Data Management

Relevant: NO

Not Used

THE BEST RUN

SAP

Disclaimer

Terms of Use

Copyright and Trademarks

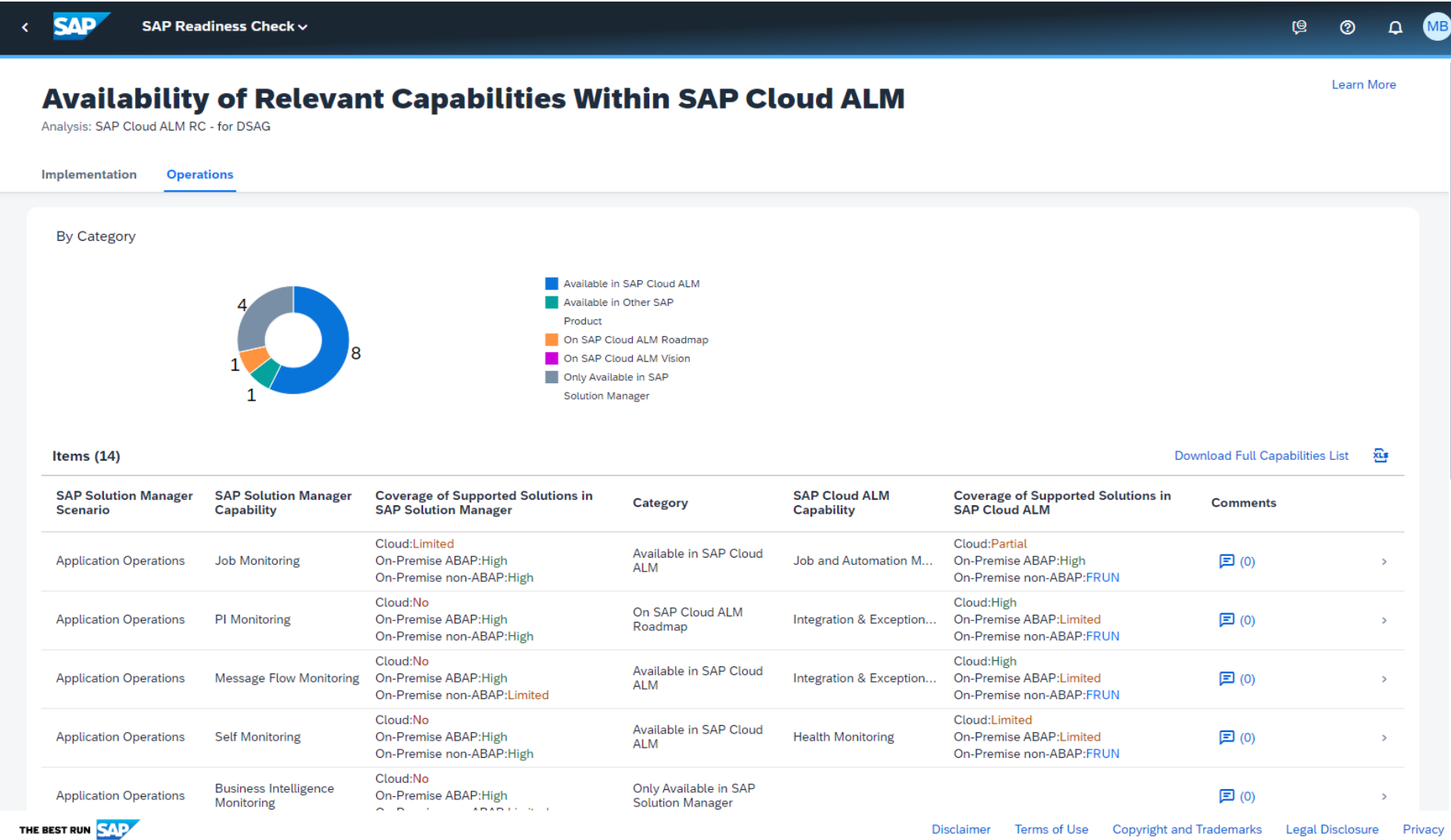
Legal Disclosure

Privacy

## 1 SAP Solution Manager usage & planning



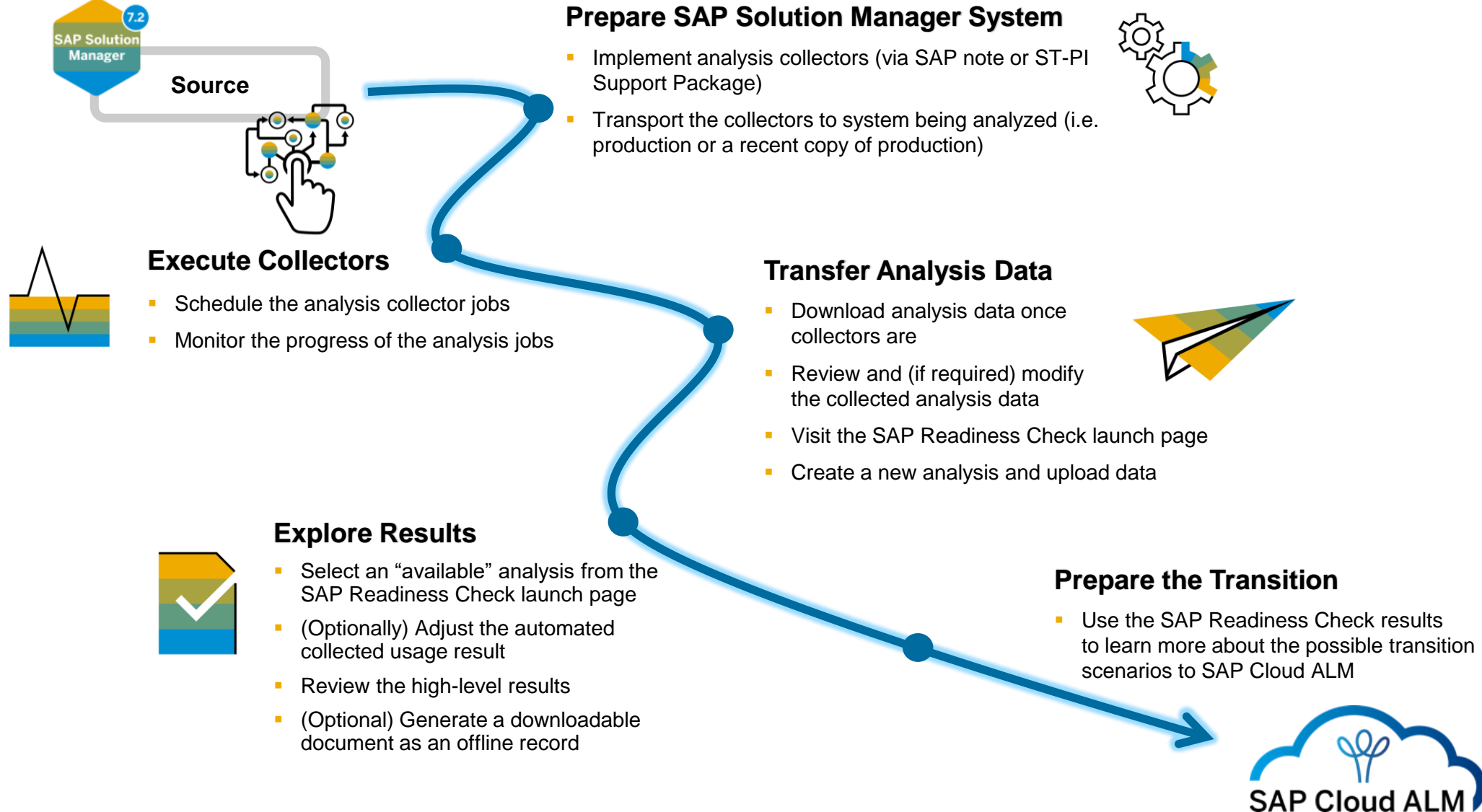
# Delivery status for selected relevant SAP Solution Manager capabilities



<https://me.sap.com/readinesscheck>

# SAP Readiness Check for SAP Cloud ALM – Available NOW

## Process Steps



# Transition Center in SAP Support Portal

## Your one-stop spot for all the information around the transition to SAP Cloud ALM!

- General information
- Functional comparison and transition guidance
- Transition recommendations and strategy
- Additional resources, videos and documents

Transition Center

The screenshot shows the SAP Support Portal interface for the 'Transition to SAP Cloud ALM' page. The top navigation bar includes 'SAP Support' and links to 'My Support', 'Products', 'Tools', 'Maintenance', 'Offerings & Programs', and 'ALM'. The breadcrumb trail reads 'SAP Support Portal Home / Application Lifecycle Management / SAP Cloud ALM'. The main heading is 'Transition to SAP Cloud ALM', with sub-links for 'Strategy Overview', 'Examples', 'Transition Support', and 'Resources'. The content area features a large image of hands assembling puzzle pieces. Text blocks provide information about the transition timeline (SAP Solution Manager in mainstream maintenance until end of 2027) and the benefits of SAP Cloud ALM. A video player is embedded, showing a presentation titled 'SAP ALM Summit EMEA 2022 Day 1: What You Must Know: SAP Solution Manager Maintenance Strategy and Transition to SAP Cloud ALM'. The video is by Marc Thier, SVP, Application Lifecycle Management, SAP, and Benjamin Schneider, Product Expert for ALM, SAP. The video player includes a play button and a progress bar. Below the video, a summary statement reads: 'In a nutshell: SAP Cloud ALM is the Go-to ALM platform for all SAP customers.'

**SAP Support** My Support Products Tools Maintenance Offerings & Programs ALM

SAP Support Portal Home / Application Lifecycle Management / SAP Cloud ALM

**Transition to SAP Cloud ALM**

Strategy Overview Examples Transition Support Resources

### Transition to SAP Cloud ALM

SAP Solution Manager is in mainstream maintenance until the end of 2027. SAP Cloud ALM is the Go-to ALM platform for all SAP customers. SAP recommends to complete the transition to SAP Cloud ALM before this date.

SAP supports our customers with this transition! This page serves as a one-stop-shop for information about and resources for the transition from SAP Solution Manager to SAP Cloud ALM.

You can already move to SAP Cloud ALM for operations and service. Move to SAP Cloud ALM for implementation at your own pace, once the required functionality is ready for you.

There is enough time to prepare and execute this transition. Start now!

#### Overview

**SAP ALM Summit EMEA 2022 Day 1: What You Must Know: SAP Solution Manager Maintenance Strategy and Transition to SAP Cloud ALM**

Marc Thier, SVP, Application Lifecycle Management, SAP  
Benjamin Schneider, Product Expert for ALM, SAP

THE BEST RUN SAP

- ✓ SAP Cloud ALM delivers ALM for the Intelligent, Sustainable Enterprise, while offering foundational support for today's customer landscapes.
- ✓ SAP Cloud ALM comes with lower cost of operation and maintenance, is easy to adopt and use, while providing innovative functionality.
- ✓ SAP Solution Manager is in mainstream maintenance until the end of 2027. SAP recommends to complete the transition to SAP Cloud ALM before this date.
- ✓ You can add SAP Focused Run to address advanced operations needs and to manage a significant on-premise footprint.

**In a nutshell: SAP Cloud ALM is the Go-to ALM platform for all SAP customers.**

# Key Points to Take Home

---

- 1) Prepare and learn about SAP Cloud ALM
- 2) Use the SAP Readiness Check for SAP Cloud ALM as a starting point
- 3) Assess your as-is ALM footprint, estimate your to-be ALM processes
- 4) Get familiar with SAP Cloud ALM
- 5) Evaluate service offerings from SAP or partners to support your transition
- 6) Plan your move - not as one big project, but as a step-by-step based approach!



# Where to Find More Information

## Product information

- [SAP Cloud ALM overview](#)
- [SAP Cloud ALM for Implementation](#)
- [SAP Cloud ALM for Operations](#)
- [SAP Cloud ALM for Service](#)

## Onboarding

- [How to request SAP Cloud ALM?](#)
- [How to set up SAP Cloud ALM?](#)

## Stay current

- [Events](#)
- [Newsletter](#)
- [Community](#)

## Additional information

- [Documentation](#)
- [Supported Solutions](#)
- [SAP Cloud ALM usage rights](#)
- [Product Road Map](#)

## Training

- Learning Journey: [SAP Cloud ALM for Implementation](#)
- Learning Journey: [SAP Cloud ALM for Operations](#)
- OpenSAP Training: [Hire to Retire – Strategy, Implementation, and Operations](#)
- Expert Guided Implementation service ([register](#))
- Mission “Onboarding and first steps” ([start](#))

---

Tim Steuer: [Tim.Steuer@sap.com](mailto:Tim.Steuer@sap.com)

Please remember to complete  
your session evaluation.

# SAPinsider



## SAPinsider.org

PO Box 982Hampstead, NH 03841  
Copyright © 2023 Wellesley Information Services.  
All rights reserved.

SAP and other SAP products and services mentioned herein as well as their respective logos are trademarks or registered trademarks of SAP SE (or an SAP affiliate company) in Germany and other countries. All other product and service names mentioned are the trademarks of their respective companies. Wellesley Information Services is neither owned nor controlled by SAP SE.

---

SAPinsider comprises the largest and fastest growing SAP membership group worldwide, with more than 750,000 global members.

---