



# Modernize Your Landscape And Automate Business Processes with SAP Integration Suite

Emily Mui, SAP

**SAP**insider  
2023



## In This Session

---

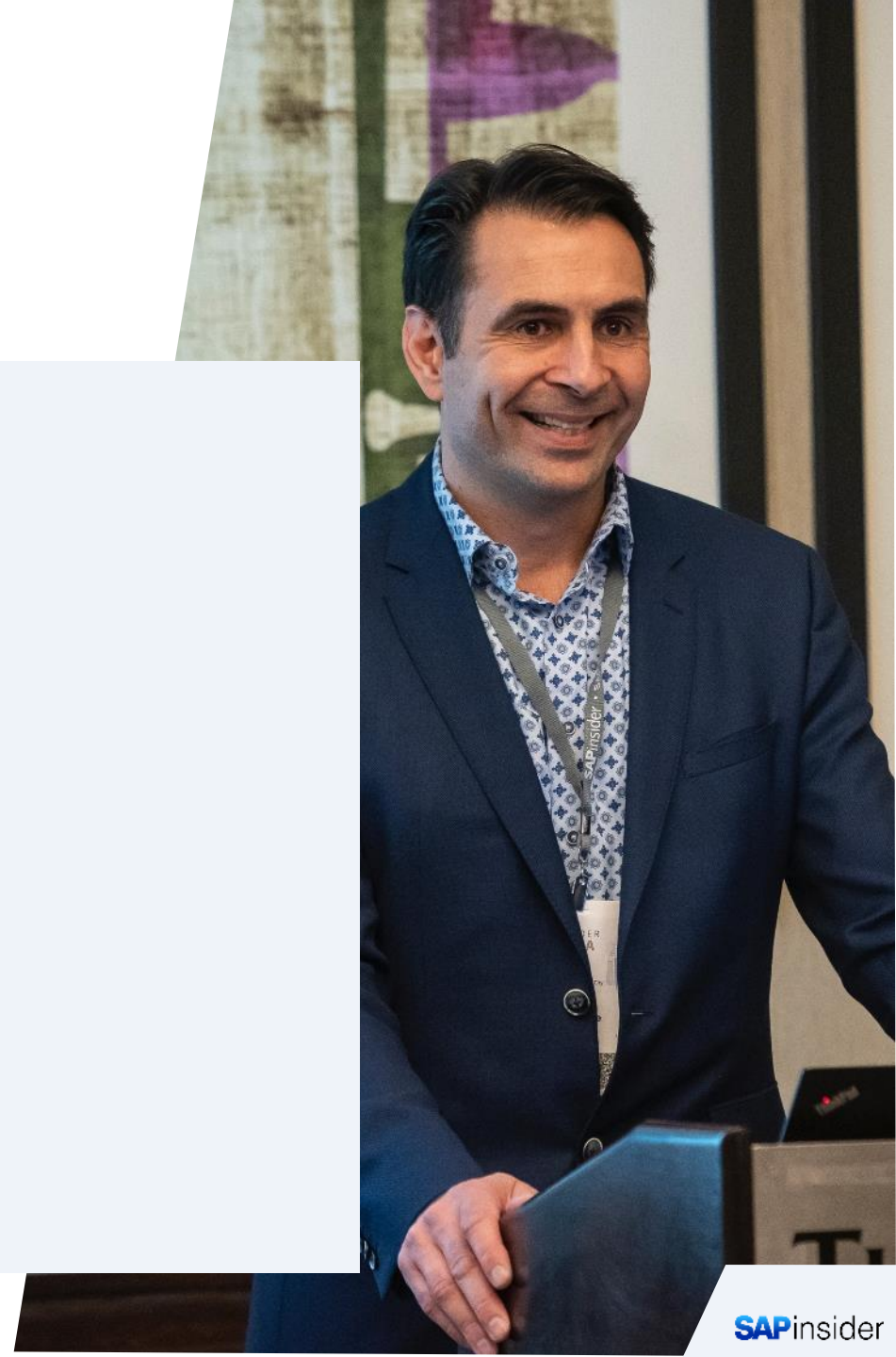
- Understand the strategic value of integration
- Learn about top integration use cases delivering immediate business value
- Explore the diverse range of integration capabilities
- Acquire insights, best practices on getting started with SAP Integration Suite



# Agenda

---

- Problems integration solves
- SAP Integration Suite overview
- Top use cases
- Why Integration Suite?
- Wrap-Up



# Businesses must adapt to thrive

Overcoming technology hurdles is a tall priority

## DESIRED OUTCOMES

- Faster time-to-value
- Frictionless experiences
- Automated processes
- Connected business processes
- Real-time awareness

## BUSINESS PRIORITIES

- Gain agility and resilience
- Grow efficiency and productivity
- Enhance visibility and foresight
- Foster engagement and collaboration across the value chain

## TECHNOLOGY HURDLES

- Application landscape complexity
- Heterogenous applications
- Distributed landscapes
- Technology debt
- Skills shortage

# Integration is the **essential first step** to gain business velocity



Integration is a **foundational** connectivity automation technology that not only **unlocks immediate business benefits** but also replaces technical debt that was previously used to connect applications”<sup>1</sup>

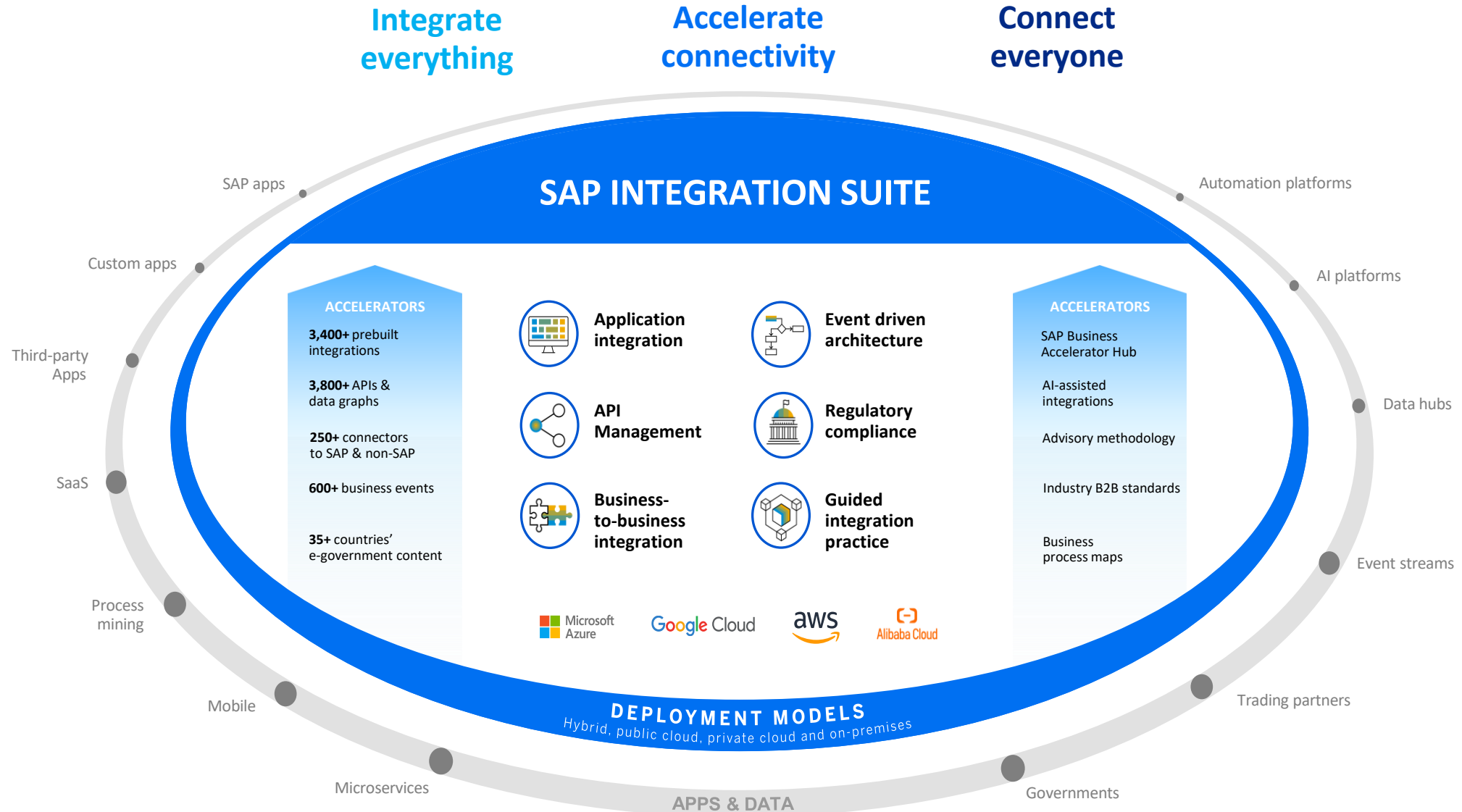
— IDC MarketScape

<sup>1</sup>“IDC MarketScape: [Worldwide Cloud Integration Software and Services \(iPaaS\) 2023 Vendor Assessment](#)”, doc #US50244723, February 2023



# SAP Integration Suite Overview

# Integrate everything to innovate now



# Integrating everything to meet fast changing business dynamics

## Harrods

“One of our key strategic principles is to leverage the benefits of cloud and as-a-service solutions wherever possible to **meet fast-changing business dynamics. SAP Integration Suite** fully **supports these ambitions.**”<sup>1</sup>

Andreas Efstathiou, IT Director, Harrods Limited

**>200**

Integration flows deployed to production<sup>1</sup>

**40%**

Reduction in TCO across its integration landscape<sup>1</sup>

**3 months**

to implement the solution<sup>1</sup>

<sup>1</sup>“[Harrods: Making Luxury More Accessible Using an Integration Platform](#)”, SAP, 2022



# Top Use Cases for Integration

# SAP Integration Suite helps you deliver business outcomes

## Optimize and automate business processes

Optimize and automate fragmented business processes to harmonize experiences across your organization.

## Power e-commerce

Achieve a holistic view of customer engagements across multiple touch points.

## Deliver customer insight

Gain a 360-degree understanding of your customers to increase loyalty and profitability.

## Create a future-proof IT landscape

Unlock the value of your existing investments with an API-first approach.

## Meet e-government and regulatory compliance

Standardize the digital registration of documents to meet regulatory compliance requirements.

## Enable the API economy

Unlock unique services and create new business models to grow competitive advantage.

## Connect business-to-business (B2B) partners

Create an efficient, secure, and scalable B2B platform to connect with your trading partners.



# Integration for Enterprise automation

**50%**

of global  
workforce can be  
automated

About half of all the activities people are paid to do in the world's workforce could potentially be automated by adapting currently demonstrated technologies.

- McKinsey

**75%**

potential  
efficiency gain

High productivity improvement levels translating to 4 x ROI have been realized by companies automating processes and workflows.

- Harvard Business Review

**30%**

lower operational  
costs

Organizations will lower operational costs... by combining hyperautomation technologies with redesigned operational processes.

- Gartner



**“Organizations are transitioning from a loosely coupled set of automation technologies to a more-connected automation strategy.”**

- Gartner

## But traditional automation had challenges...

### Process orchestration

**27%** of technology buyers state silos of data and responsible use are critical inhibitors

### Bot proliferation

**51%** of technology buyers state that bot proliferation is a serious challenge in scaling automation

### Disconnected toolset

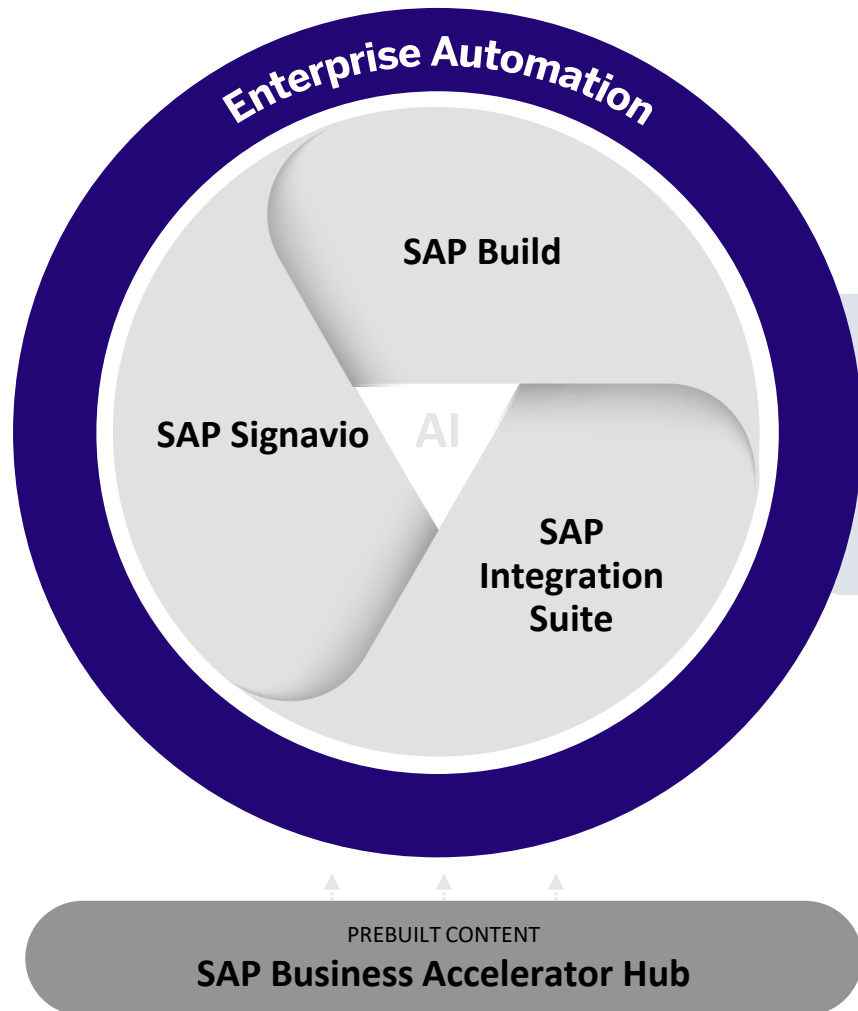
**38%** of technology buyers state the types of automation we use don't work well with each other

Source: Ritu Jyoti, "Enterprise Automation 2.0: The Connective Tissue of the Digital Business," IDC, March 2023



# Enterprise automation with SAP

Future-proof your journey to become an intelligent and automated enterprise



Integrate applications, discover inefficiencies, and automate processes across heterogeneous environments.

# Customers Succeeding with Enterprise Automation

Avaya

300%

Increase in productivity & effectiveness

in audit process and incident management tracking.

[Watch the customer story](#)

Blue  
Diamond  
Growers

\$1 Million

savings in annual transportation expenses.

[Watch the customer story](#)

Mahindra  
and  
Mahindra

20%

Faster execution

of the jobs (e.g., Backorder Processing, MRP, Data Extractions).

[Read the customer story](#)

# iPaaS and standard approaches for modern integration

## TODAY'S LANDSCAPES

- Distributed – on-premises & multi-cloud
- Heterogeneous – SAP and 3rd party
- Interoperate across value chains
- Require real-time integration
- Evolve constantly

## Integration INHIBITORS



- Point-to-point integration
- Proprietary integration methods
- Specialized legacy technology
- Multi-vendor solutions
- Tight coupling



## Integration ENABLERS

- Cloud-based
- API & event-driven architectures
- Standards (e.g. OData)
- Real-time communication
- Packaged integration processes (PIPs)

# SAP's investment in integration

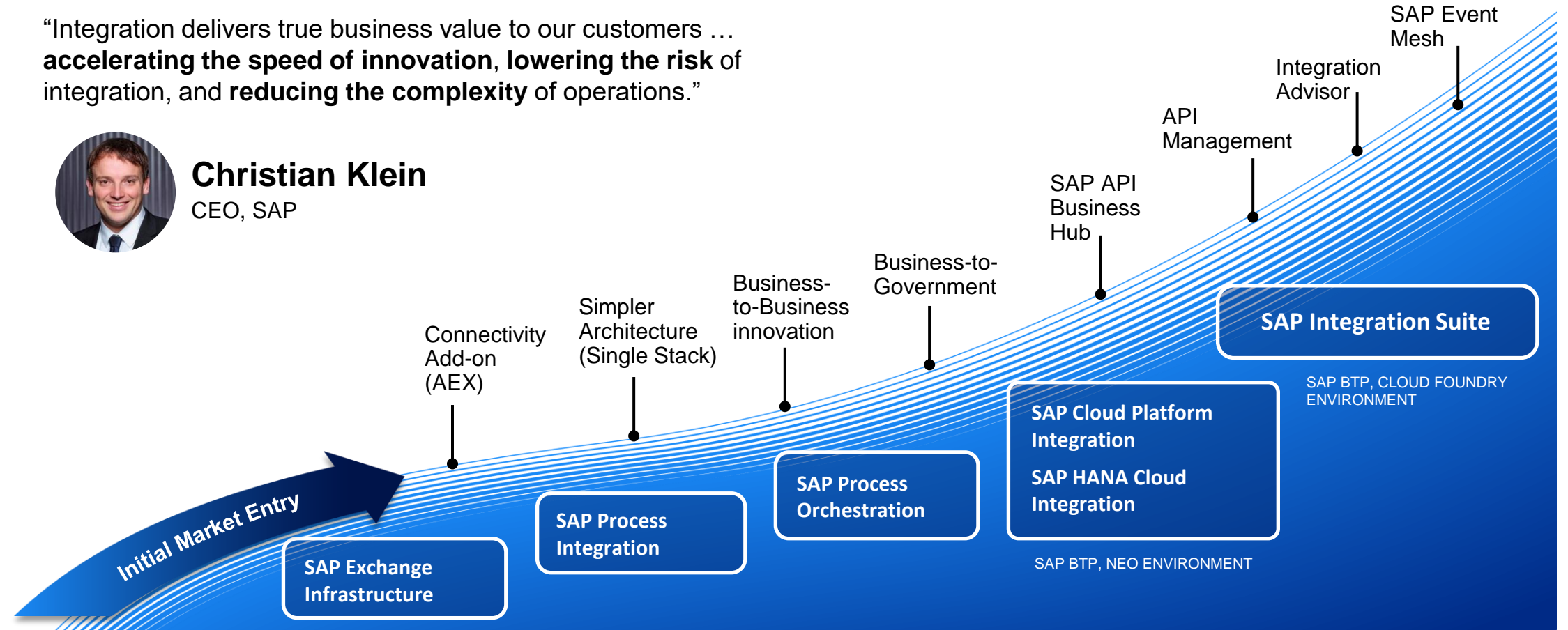
## A history of continuous innovation

"Integration delivers true business value to our customers ...  
**accelerating the speed of innovation**, **lowering the risk of**  
integration, and **reducing the complexity** of operations."



**Christian Klein**  
CEO, SAP

CUSTOMER VALUE

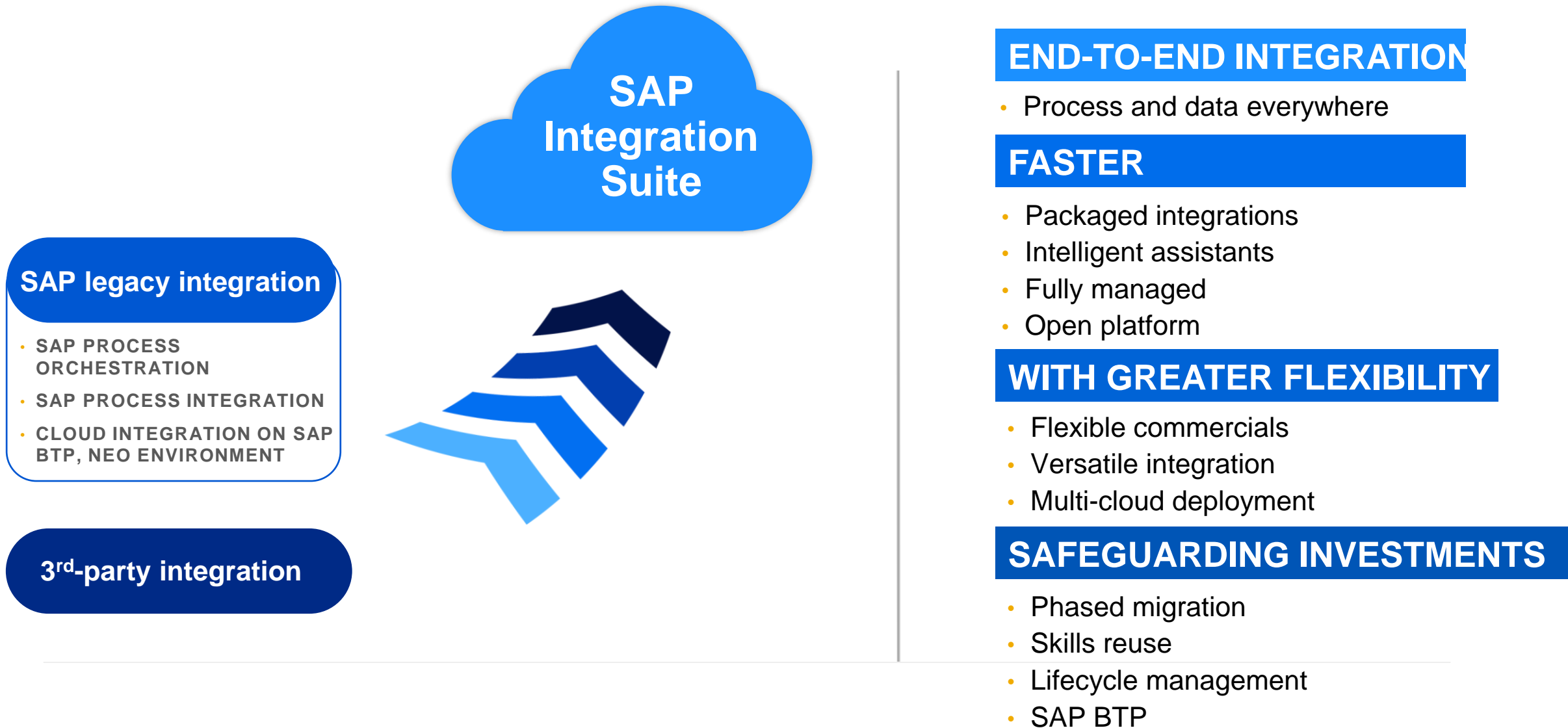


2003

TODAY



# Modernize integration to power your transformation journey



**Simplify and consolidate integration** to achieve end-to-end-processes faster at a lower TCO

# Eneco

Cloud-first strategy with SAP Integration Suite

Faster time-to-value using modern API and event driven architecture after migration from SAP Process Orchestration

*SAP Integration Suite helped us cut down IT spend for integration middleware to between 50% and 60% of our annual total cost of ownership. Plus, the ease of use and flexibility of the solution helped us go live in a matter of weeks.*

Marco Verhoef  
Integration Consultant, IT Asset Management, [Eneco Holding N.V.](#)



# How to approach integration modernization?

Start with the right mindset and methodology

## 1 THINK STRATEGICALLY

- Invest in standardized solutions for the long haul
  - New projects w/ SAP Integration Suite
  - Stop investments on SAP PI/PO or SAP CPI on SAP BTP, Neo environment
- Avoid "lift and shift"

## 2 START SIMPLE

- Gain experience w/ simple scenarios
- Consider prebuilt integrations maintained by SAP (hub.sap.com)
- Start w/ scenarios that have least disruption

## 3 SCALE CONFIDENTLY

- Approach more complex scenarios
- Highly customized / code intensive
- Ground-to-ground
- Business-to-Business
- Mission critical scenarios

[Get support migrating to SAP Integration Suite](#)

Why SAP Integration Suite?



# Partner with SAP to integrate and innovate now

**650,000+**

Integrations deployed

**24,000+**

Instances provisioned

**200,000+**

Systems and applications  
connected thru Integration  
Suite

**3,400+**

Pre-built integrations to  
accelerate integrations

**3,800+**

Ready to use APIs in SAP  
Business Accelerator Hub

# Choose a leading integration platform as a service (iPaaS)

**SAP recognized as a Leader in the 2023 Gartner® Magic Quadrant™ for the third time in a row.**

**SAP was positioned highest overall in Completeness of Vision among all 16 vendors evaluated.**

This graphic was published by Gartner, Inc. as part of a larger research document and should be evaluated in the context of the entire document. The Gartner document is available upon request from [SAP here](#).

GARTNER is a registered trademark and service mark of Gartner, Inc. and/or its affiliates in the U.S. and internationally, and MAGIC QUADRANT is a registered trademark of Gartner, Inc. and/or its affiliates and are used herein with permission. All rights reserved.

*Gartner does not endorse any vendor, product or service depicted in its research publications and does not advise technology users to select only those vendors with the highest ratings or other designation. Gartner research publications consist of the opinions of Gartner's research organization and should not be construed as statements of fact. Gartner disclaims all warranties, expressed or implied, with respect to this research, including any warranties of merchantability or fitness for a particular purpose.*

Magic Quadrant for Integration Platform as a Service, Worldwide



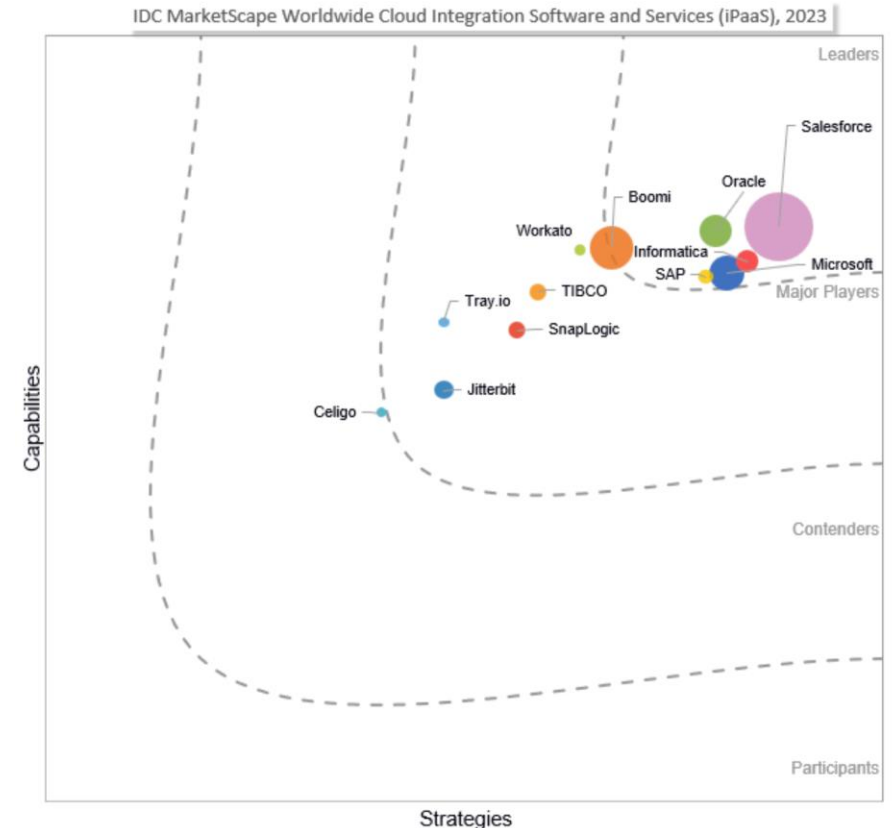
Source: Gartner (January 2023)

# Choose leading cloud Integration software and services

SAP recognized as a Leader in the 2023 IDC Marketscape™

“SAP Integration Suite has strong AI capabilities including interface and mapping proposal service based on AI and machine learning, speeding up the development of new connections.”<sup>1</sup>

[Read the excerpt](#)



IDC MarketScape vendor analysis model is designed to provide an overview of the competitive fitness of ICT suppliers in a given market. The research methodology utilizes a rigorous scoring methodology based on both qualitative and quantitative criteria that results in a single graphical illustration of each vendor's position within a given market. The Capabilities score measures vendor product, go-to-market and business execution in the short-term. The Strategy score measures alignment of vendor strategies with customer requirements in a 3-5-year timeframe. Vendor market share is represented by the size of the icons.

<sup>1</sup>“IDC MarketScape: Worldwide Cloud Integration Software and Services (iPaaS) 2023 Vendor Assessment”, #US50244723, IDC, 2023

# The Total Economic Impact™ of SAP Integration Suite

A study of five multinational organizations achieved a composite **278% ROI over three years** with a payback period in less than 6 months by investing in **SAP Integration Suite**.<sup>1</sup>

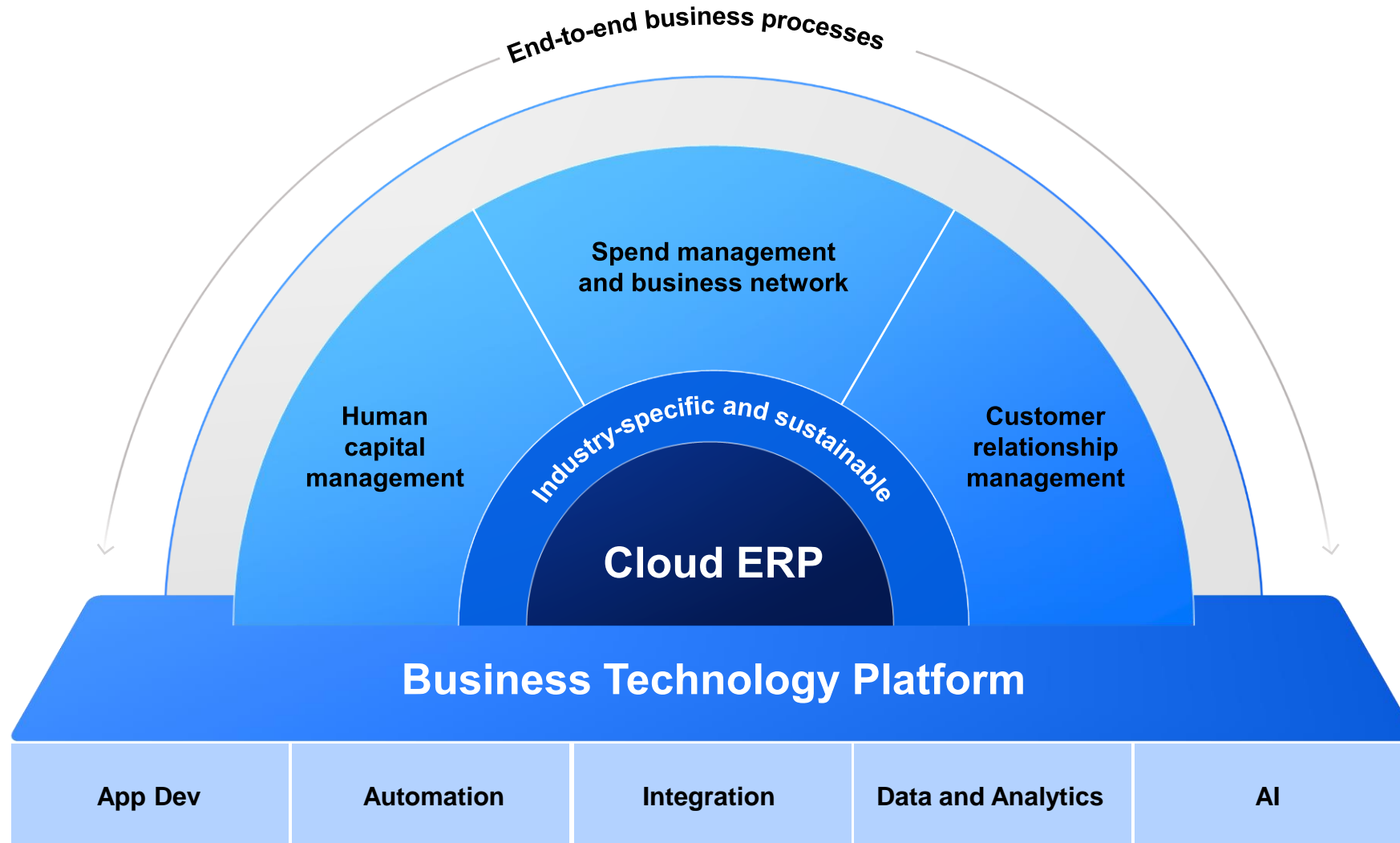
[Download the Study](#)



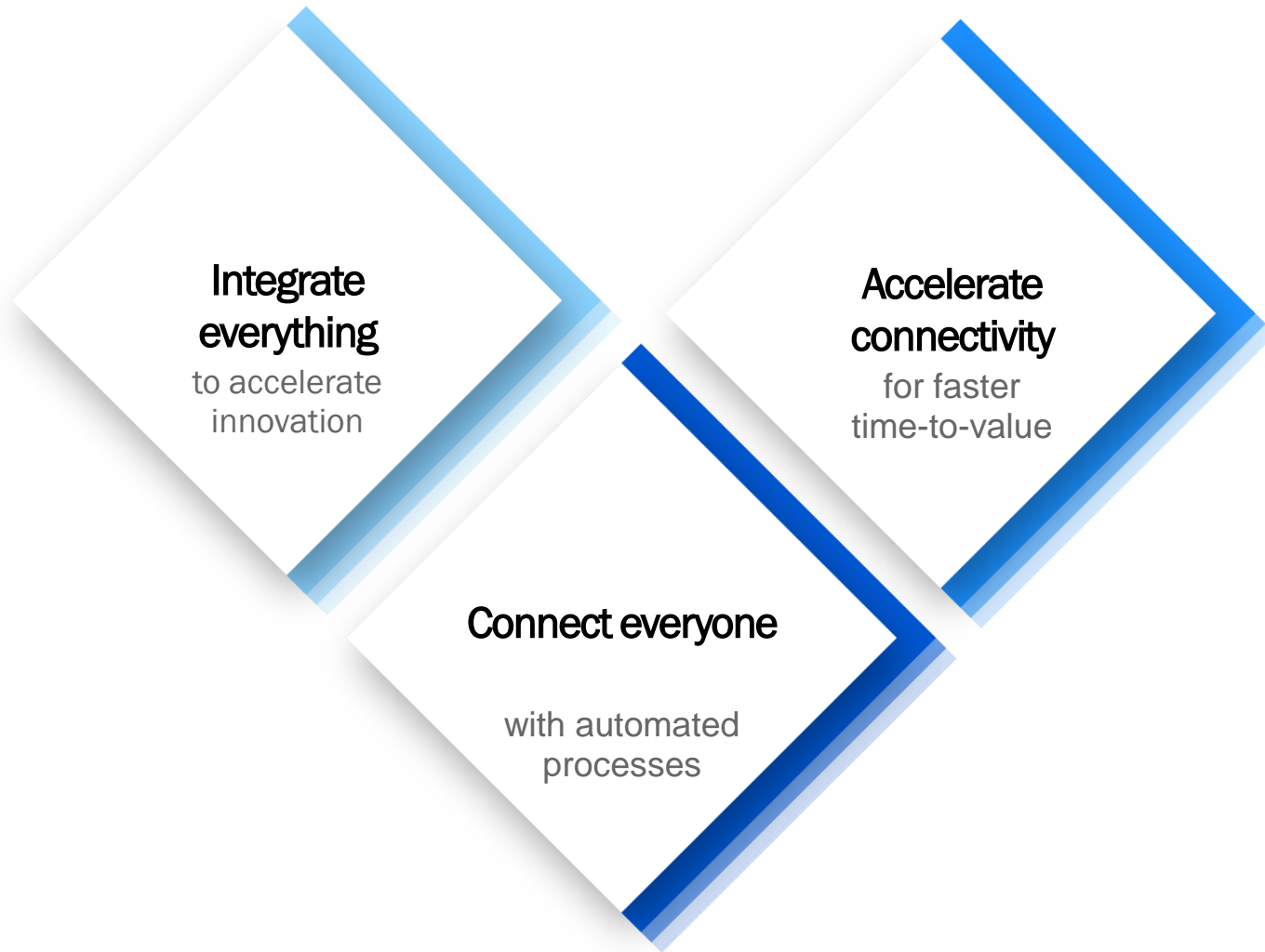
<sup>1</sup>The Total Economic Impact™ of SAP Integration Suite, a commissioned study conducted by Forrester Consulting on behalf of SAP, March 2022



# SAP Integration Suite connects the intelligent, sustainable enterprise



# Wrap up: next steps with SAP Integration Suite



[Learn more on your personalized Integration Space](#)

[Learn about SAP Integration Suite on SAP.com](#)

[Access the Gartner Magic Quadrant](#)

[Access the IDC MarketScape](#)

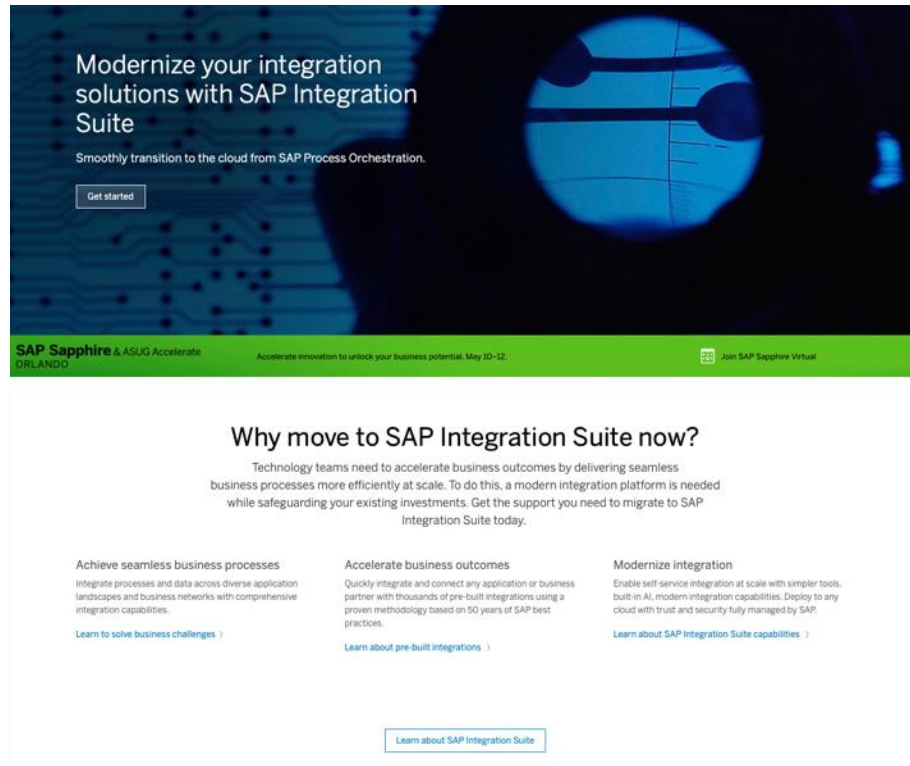
[Download the Forrester Study](#)

[Hear from your peers](#)

[Get hands-on with SAP Integration Suite](#)

[Discover APIs and other integration accelerators](#)

# Find out more



## [Get support migrating to SAP Integration Suite](#)

Detailed self-service content and programs to support SAP Process Integration & Orchestration customers move to SAP Integration Suite

## Learn about SAP Integration Suite

Check out the [sap.com/integration](https://sap.com/integration) website, which has valuable resources for fast-tracking your knowledge of SAP Integration Suite and to help you get the highest quality answers quickly and easily from SAP experts

### Engage our community

<http://community.sap.com/topics/integration-suite>

### Free tier

[SAP Business Technology Platform free tier](#)

### Customers

[SAP Integration Suite customers](#)

### Roadmap

[SAP Integration Suite roadmap](#)

# SAP is here to help.

Contact your local SAP representative

[sap.com/corporate/en/company/office-locations.html](https://sap.com/corporate/en/company/office-locations.html)

# Key Points to Take Home

---

- Integration is strategic for businesses
- SAP Integration Suite solves a number of integration challenges and is critical to automation and modernization initiatives
- Modern, hybrid and comprehensive integration platform with event mesh for scalable and resilient real-time processing
- Migration tooling, programs to help existing SAP PO customers move to Integration Suite
- Plenty of resources for getting started with Integration Suite

---

Emily.Mui@SAP.com

Please remember to complete  
your session evaluation.

# SAPinsider



## SAPinsider.org

PO Box 982Hampstead, NH 03841  
Copyright © 2023 Wellesley Information Services.  
All rights reserved.

SAP and other SAP products and services mentioned herein as well as their respective logos are trademarks or registered trademarks of SAP SE (or an SAP affiliate company) in Germany and other countries. All other product and service names mentioned are the trademarks of their respective companies. Wellesley Information Services is neither owned nor controlled by SAP SE.

---

SAPinsider comprises the largest and fastest growing SAP membership group worldwide, with more than 750,000 global members.

---