



A Comprehensive Guide For SAP BTP

Steffen Pietsch, SAP SE

Vice President, Head of BTP Product Management

SAPinsider
2023

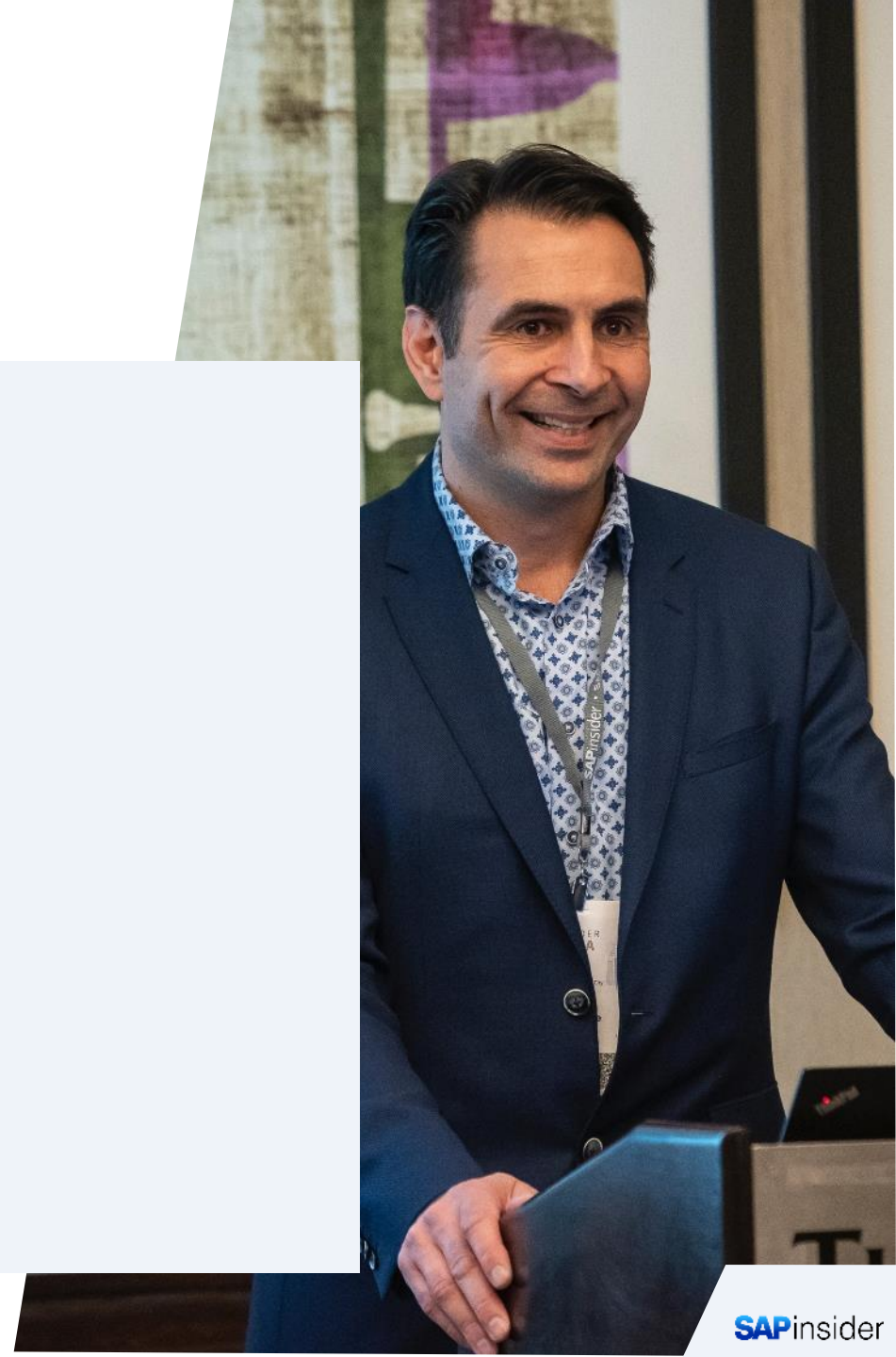


In This Session

- Understand the scope of SAP BTP and how it accelerates innovation
- Get to know the SAP BTP Guidance Framework – a new central access point for SAP BTP best practices
- Explore best practices for architecting, developing, and operating solutions on SAP BTP
- Learn how to build enterprise-grade solutions on SAP BTP

What We'll Cover

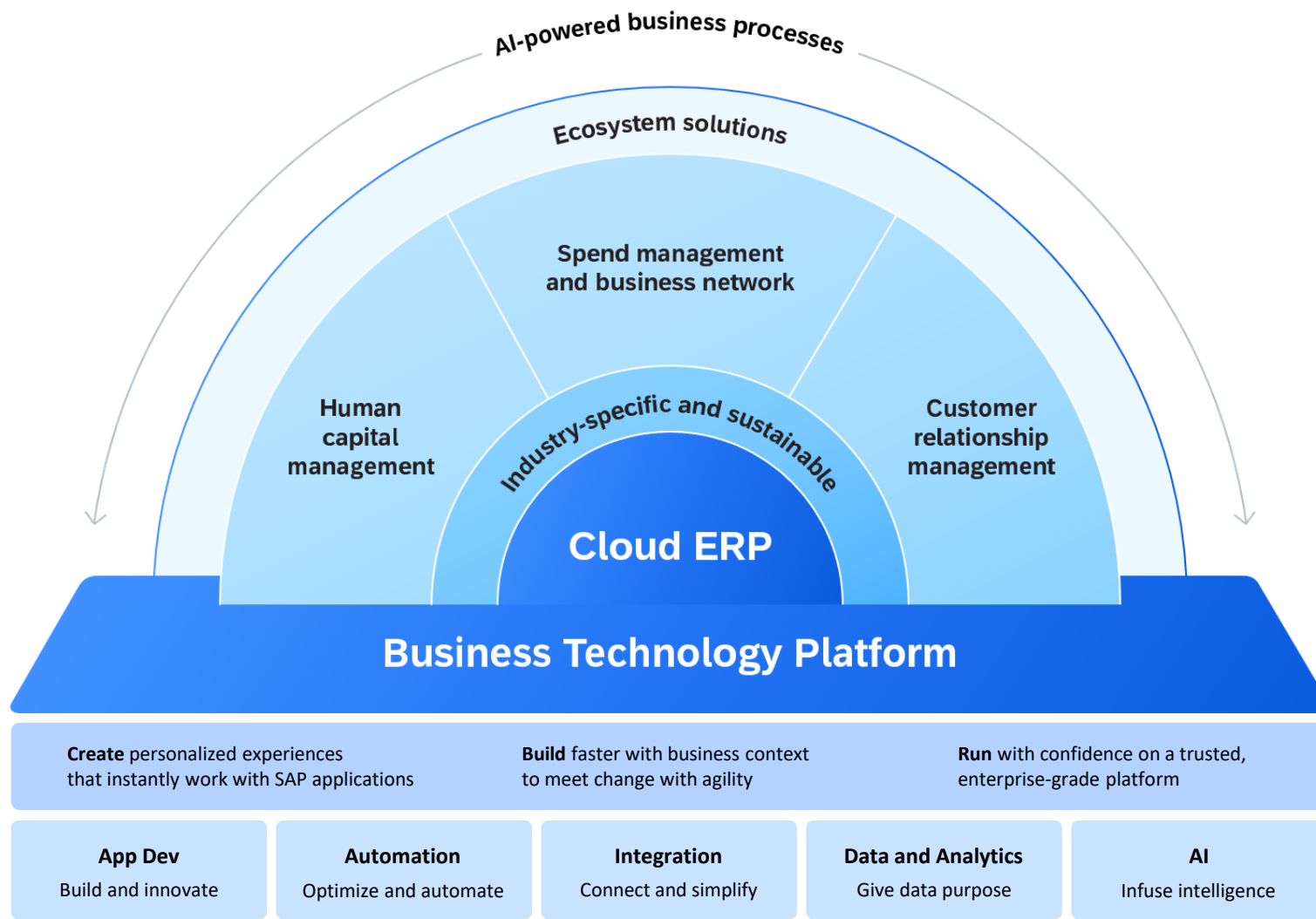
- SAP BTP at a Glance
- Explore the SAP BTP Guidance Framework



SAP BTP at a Glance

- What is SAP BTP?
- Foundational Qualities
- Business Centricity as key differentiator
- SAP BTP – optimized for SAP landscapes
- Customer Examples



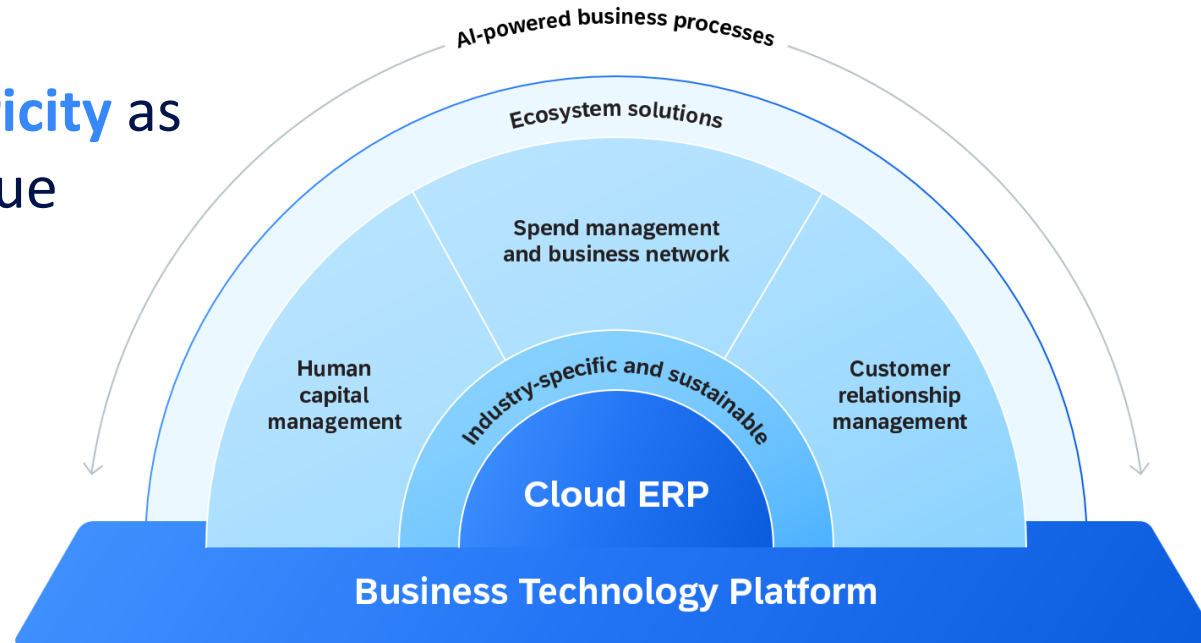


SAP Business Technology Platform (SAP BTP) is the foundation for a smoothly integrated SAP portfolio and the platform for SAP, customers, and partners to innovate and transform.

Pairing foundational qualities with a clear differentiation



Business centricity as
our unique value



Foundational qualities

Unified

- Unified platform for innovation along comprehensive business processes
- Smooth integration between SAP BTP services
- Harmonized operations and UI

Enterprise-grade

- Built-in security and compliance
- Reliability, performance, and scalability
- Simple and intuitive user experience
- Lifecycle management

Open

- Embracing open-source technology
- Interoperability with 3rd-party applications and data
- Growing ecosystem of strategic partners

Differentiation: How business centricity accelerates customer and partner outcomes

Smooth experience between LoB apps and SAP BTP

SAP BTP capabilities integrated, embedded in, and on top of LoB applications to provide suite qualities and a smooth experience from in-app to custom and cross-app usage



Actionable use cases

Value-adding repeatable use cases based on SAP's rich business process experience that provide guidance and artifacts and can be implemented with minimal effort



Prebuilt business content

Turnkey business content, such as integration packs, prebuilt data models, and analytics stories or process templates, capturing LoB and industry best practices and reducing time to value



Semantic data access

Nomenclature, data objects and models, and KPIs harmonized across LoB applications and business processes



**Business
Centricity** =



Business centricity as the “B” in **SAP BTP** is based on **unique qualities** that accelerate outcomes for our customers and partners.

Smooth experience between LoB apps and SAP BTP

Actionable use cases

Prebuilt business content

Semantic data access

SAP data and
applications

SAP

SAP BTP as the platform for SAP landscapes



Keep the core clean

Create and operate highly integrated side-by-side solution extensions to individualize your business processes without harming the stable application core.



Accelerate move to cloud

Benefit from SAP BTP capabilities before, during, and after your move to the cloud in disciplines such as data and extension migration, integration, or consolidation.



Optimize and automate business processes

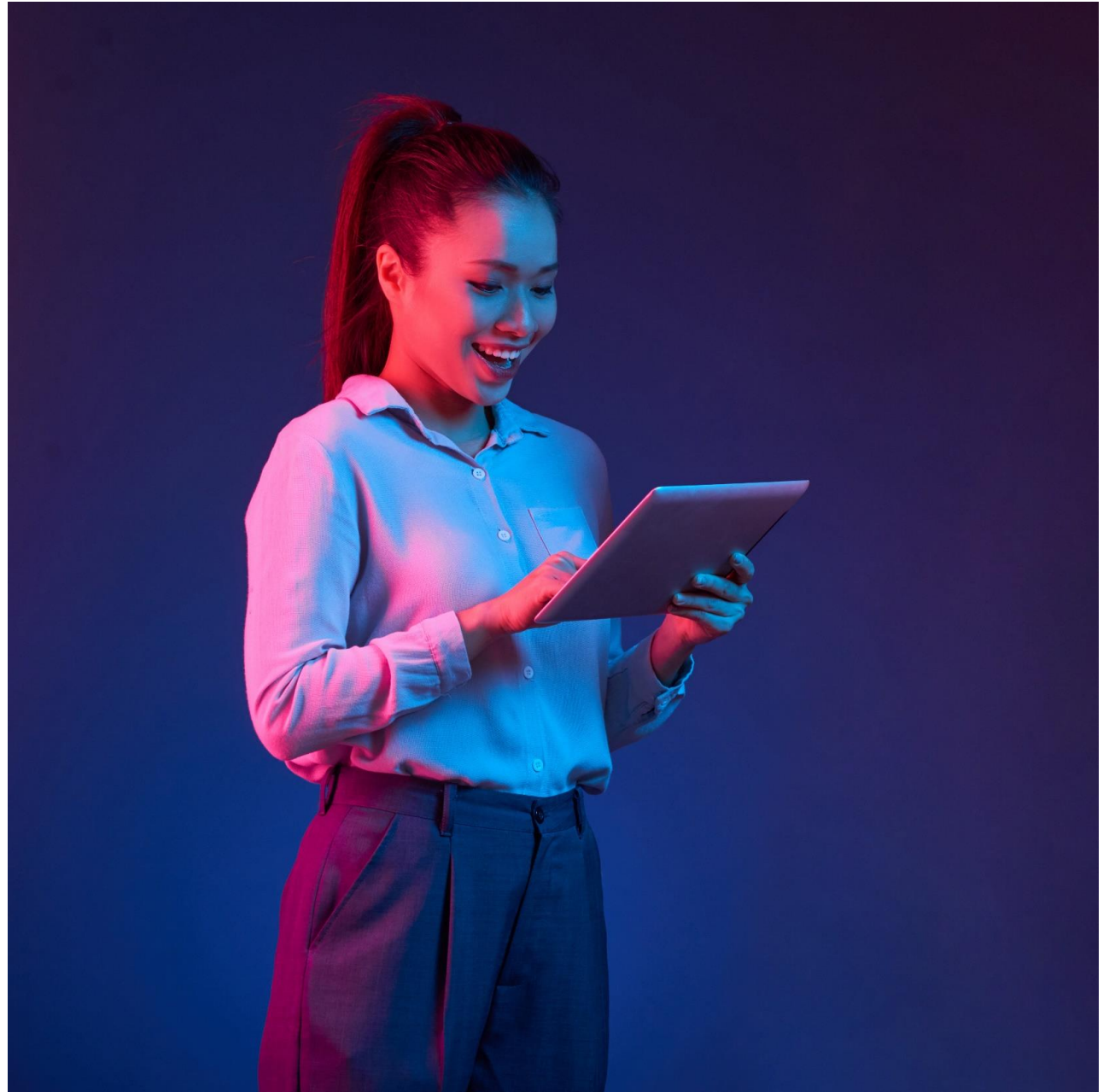
Automate manual tasks as well as cross-application workflows, leveraging a broad set of predefined content.



Drive decisions based on data

Support your business users with the right information at hand or AI-based recommendations to improve decision speed and quality – leveraging data sources.

22k+
customers live
on SAP BTP

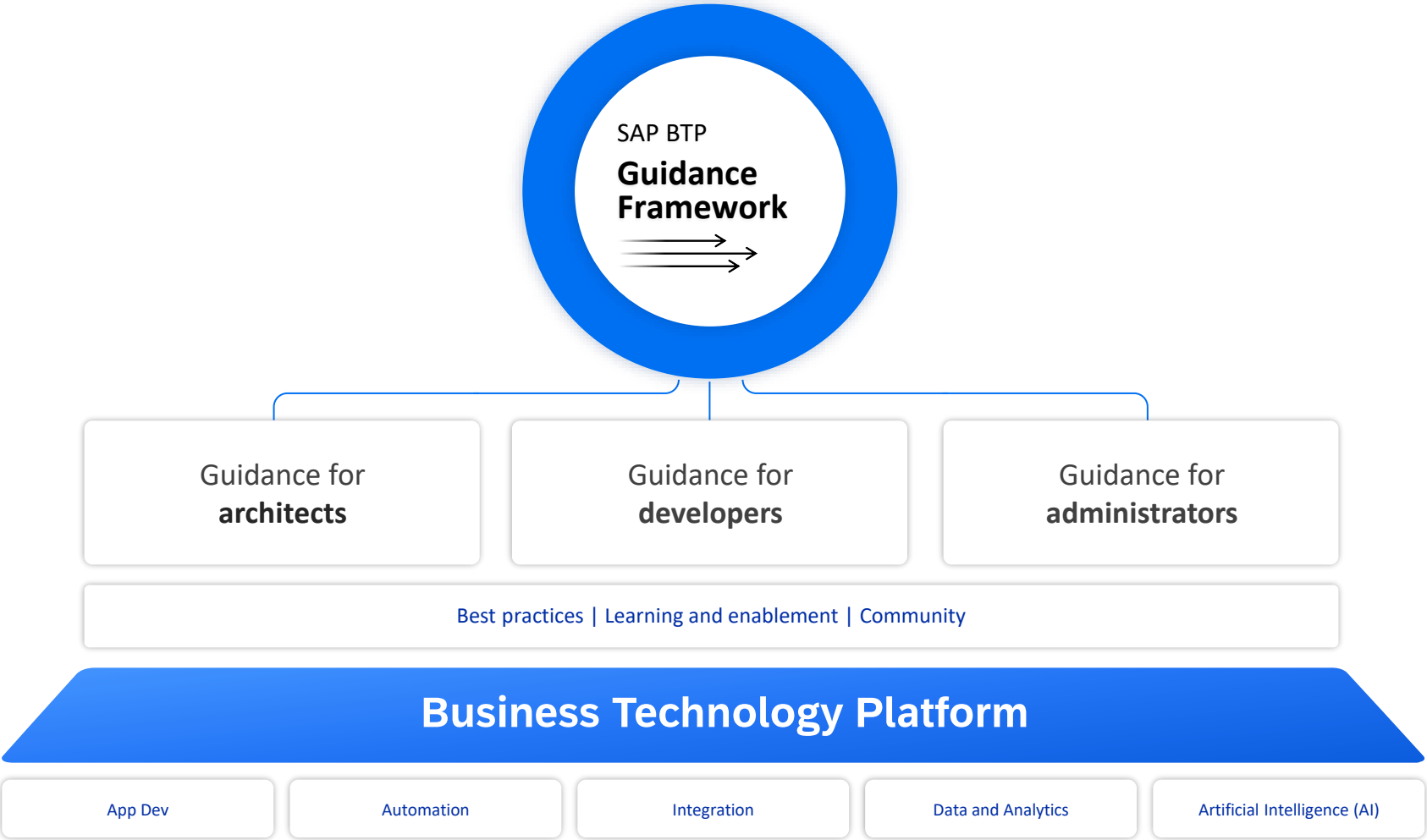


Explore the SAP BTP Guidance Framework

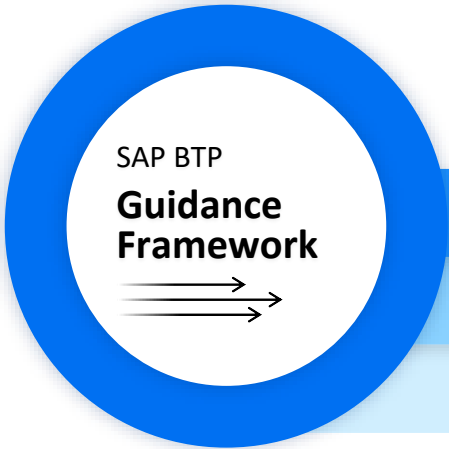
- Motivation: Why do we need an SAP BTP Guidance Framework
- What is it?
- Sample Content
 - Methodologies & Customer Example
 - SAP BTP Developer's Guide
 - Security Recommendations
 - Reference Architectures



SAP BTP Guidance Framework

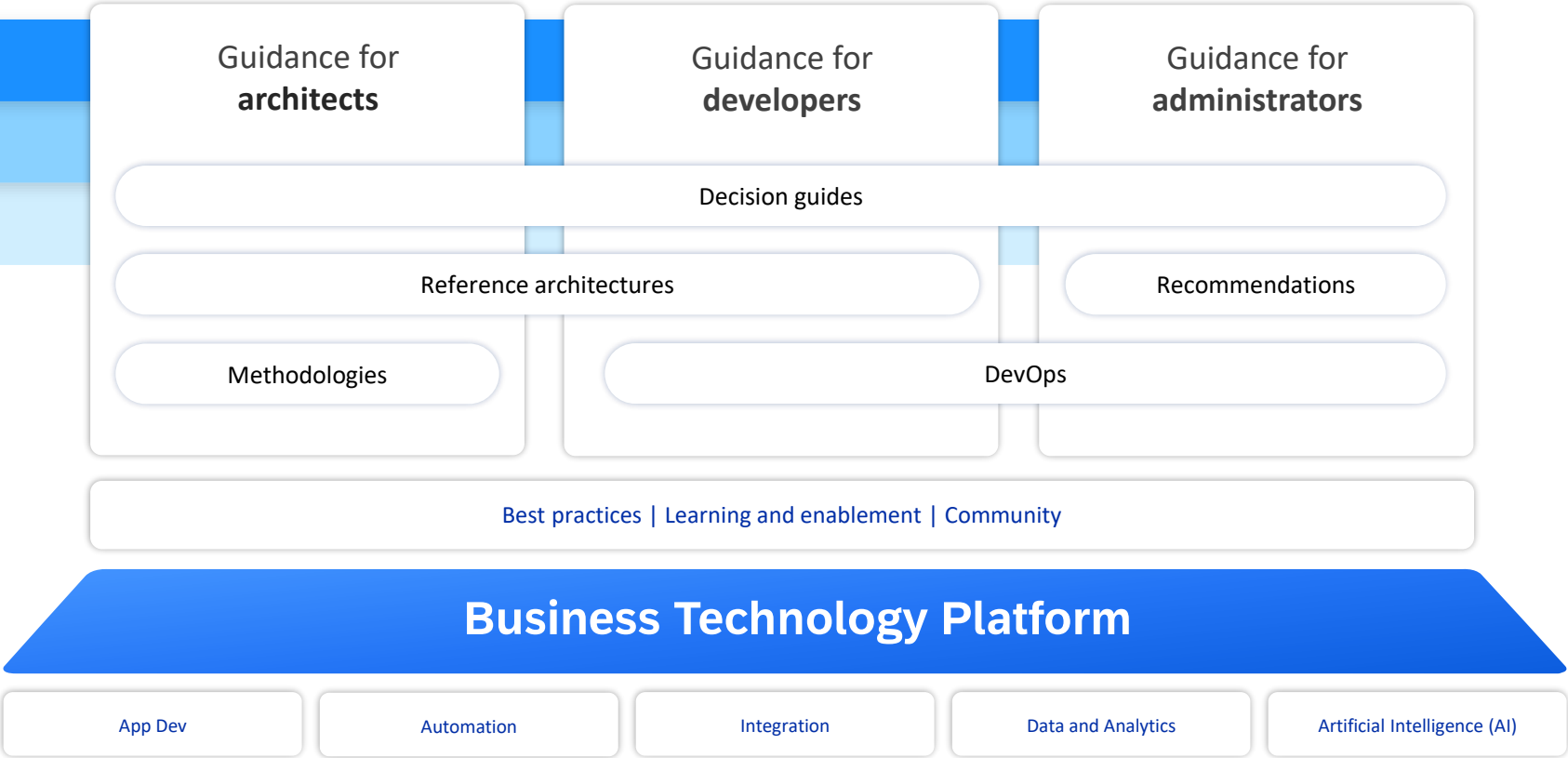


SAP BTP Guidance Framework

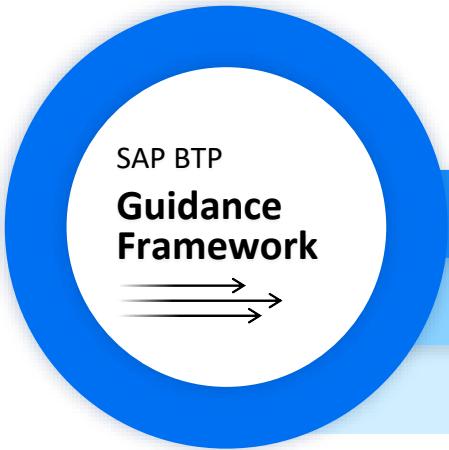


WHAT IS IT?

SAP BTP Guidance Framework is your compass for architecting, implementing, and operating solutions on SAP BTP. It provides a central access point for decision guides, reference architectures, methodologies, and many best practices.

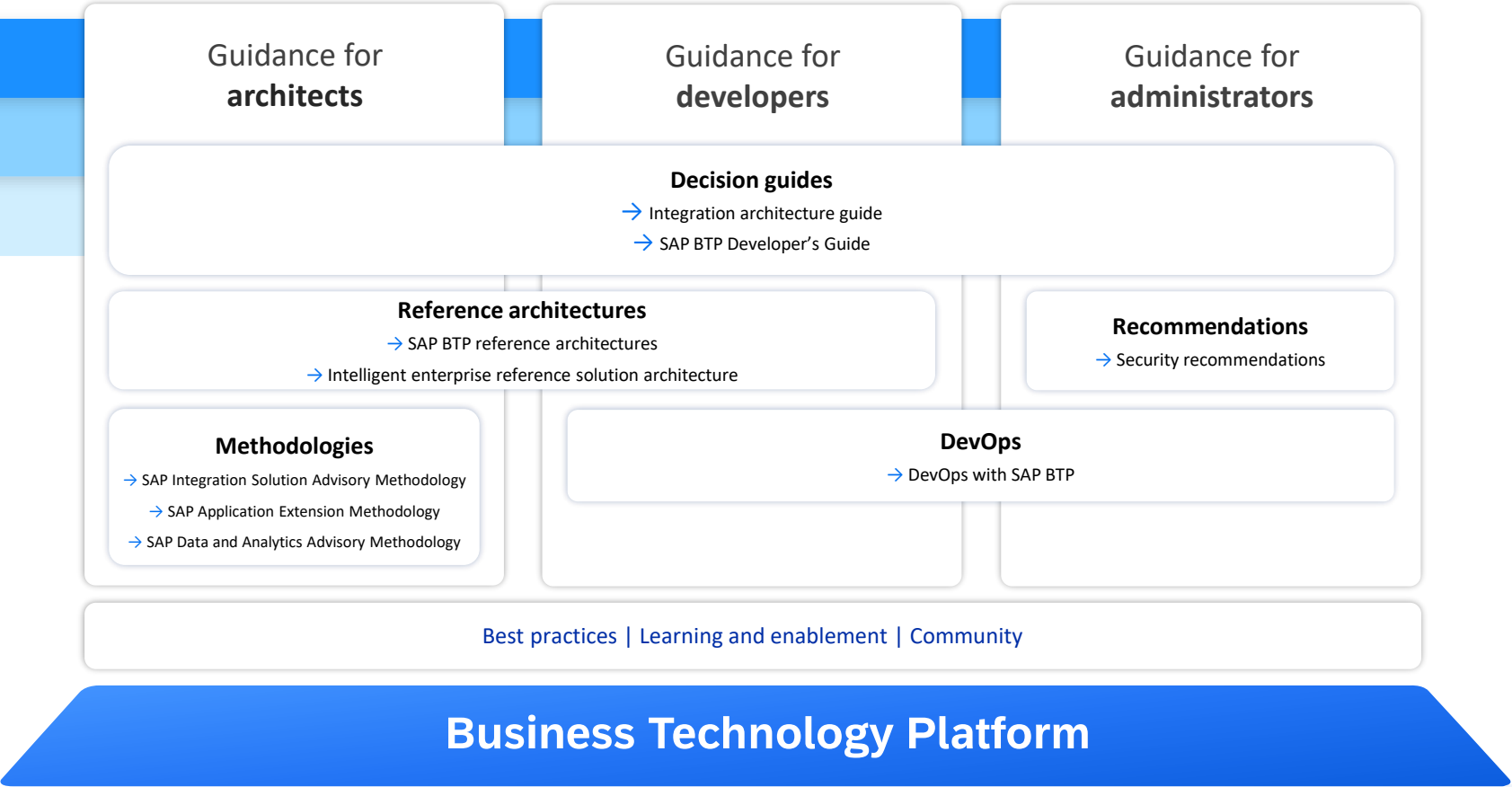


SAP BTP Guidance Framework



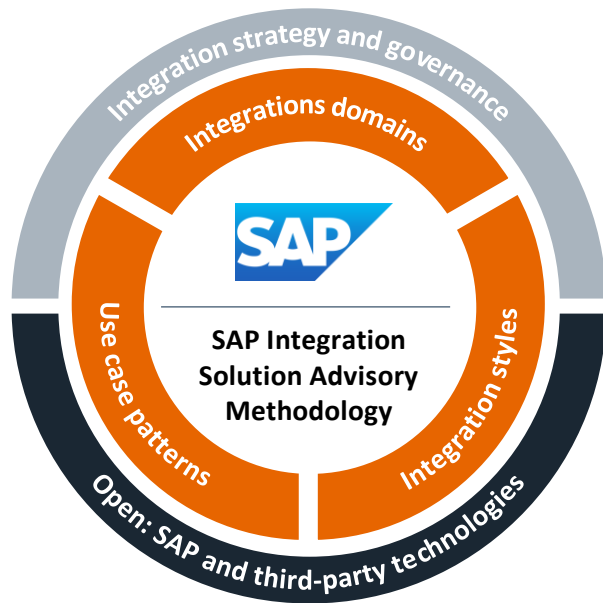
WHAT IS IT?

SAP BTP Guidance Framework is your compass for architecting, implementing, and operating solutions on SAP BTP. It provides a central access point for decision guides, reference architectures, methodologies, and many best practices.

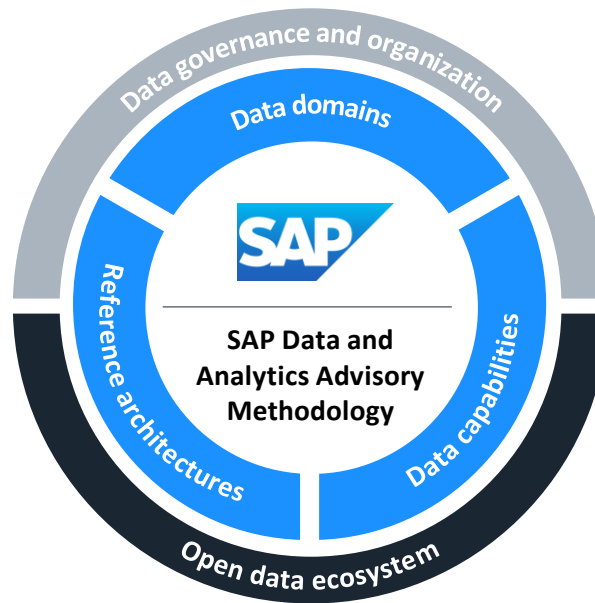


Methodologies

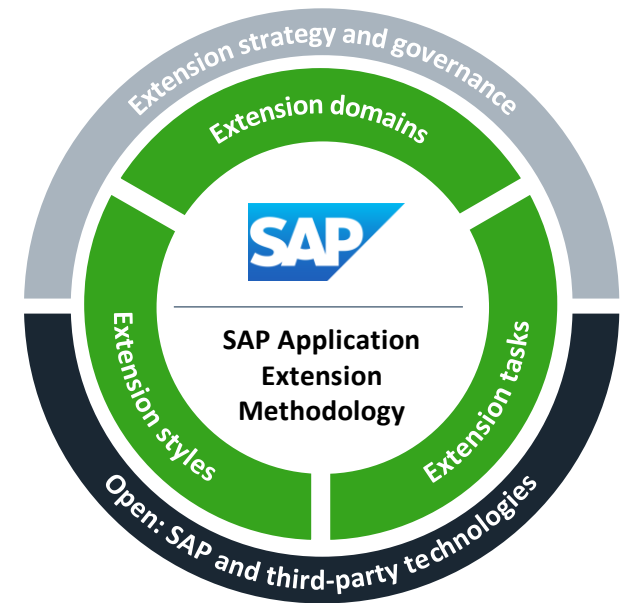
Methodologies provide a structured and technology-agnostic approach to define and execute domain-specific strategies.



[SAP Integration Solution Advisory Methodology](#)



[SAP Data and Analytics Advisory Methodology](#)



[SAP Application Extension Methodology](#)

toom: Driving Transformation with a Standardized Approach to Integration

With a portfolio of more than 300 stores including toom Baumarkt, B1 Discount Baumarkt, and Klee Gartenfachmarkt, toom Baumarkt GmbH is one of the leading providers in the German DIY sector. Part of the REWE Group, the company has a vision of providing outstanding customer experiences through interconnected retail. To help realize this, toom used SAP® Integration Solution Advisory Methodology to help achieve tight integration of SAP and third-party solutions within a new application architecture.



Supporting Integration Excellence with SAP® Integration Solution Advisory Methodology



Before: Challenges and Opportunities

- Existing integration approach that neither fits nor scales with toom's application landscape modernization based on the SAP S/4HANA® Retail solution
- Rising complexity due to emerging integration approaches
- High cost to maintain and operate existing integration scenarios

Why SAP and NTT DATA Business Solutions GmbH

- Holistic integration approach covering both SAP® Integration Solution Advisory Methodology and SAP Integration Suite
- Ability to support a hybrid IT environment, including SAP, third-party, cloud, and on-premise solutions
- Expertise from NTT DATA Business Solutions GmbH throughout the transformation, including guidance on organization, governance, operations, and platform and technology

After: Value-Driven Results

- Definition of an enterprise integration strategy that supports toom's digital transformation
- Flexible and agile integration approach using SAP Integration Suite
- Comprehensive process integration, including compliant access to enterprise data

“SAP Integration Solution Advisory Methodology helped us **streamline our complex landscape** in order to build a hybrid integration architecture.”

Sandro Nickel, Technical Solution Architect, toom Baumarkt GmbH

50%

Cost reduction by sunsetting legacy integration technology

2x

Faster implementation of integration scenarios

Featured Partner

NTT DATA
Trusted Global Innovator

Application development and automation - SAP Build Code

Build rapidly

with AI code generation



Generate code and app logic with AI aligned with SAP-centric programming models from natural language

Turnkey environment for coding, testing, integrations, and application lifecycle management

Guided experiences and prebuilt templates to quickly build full stack, UI, and mobile apps

Tailored

for SAP development



Prebuilt integration with SAP and non-SAP systems

Trusted security for authentication, authorization, and data protection

Extensibility for SAP S/4HANA and other systems

Enhanced

fusion development

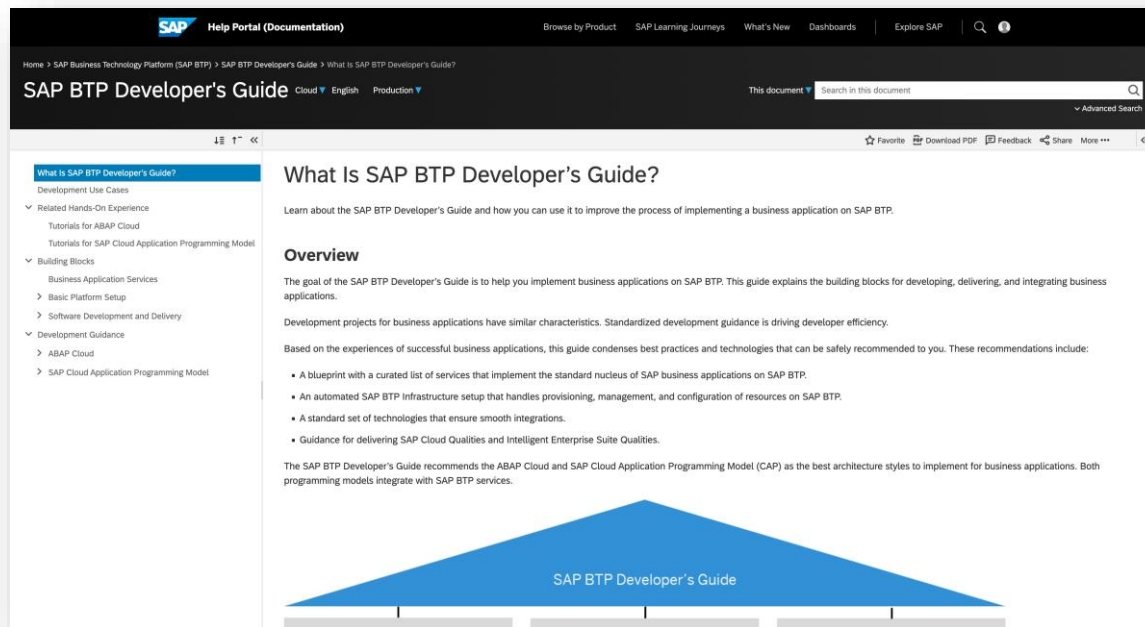


Secure collaboration between professional and citizen developers

App composability across SAP Build and ABAP solutions

Unified governance and simplified application lifecycle management

SAP BTP Developer's Guide

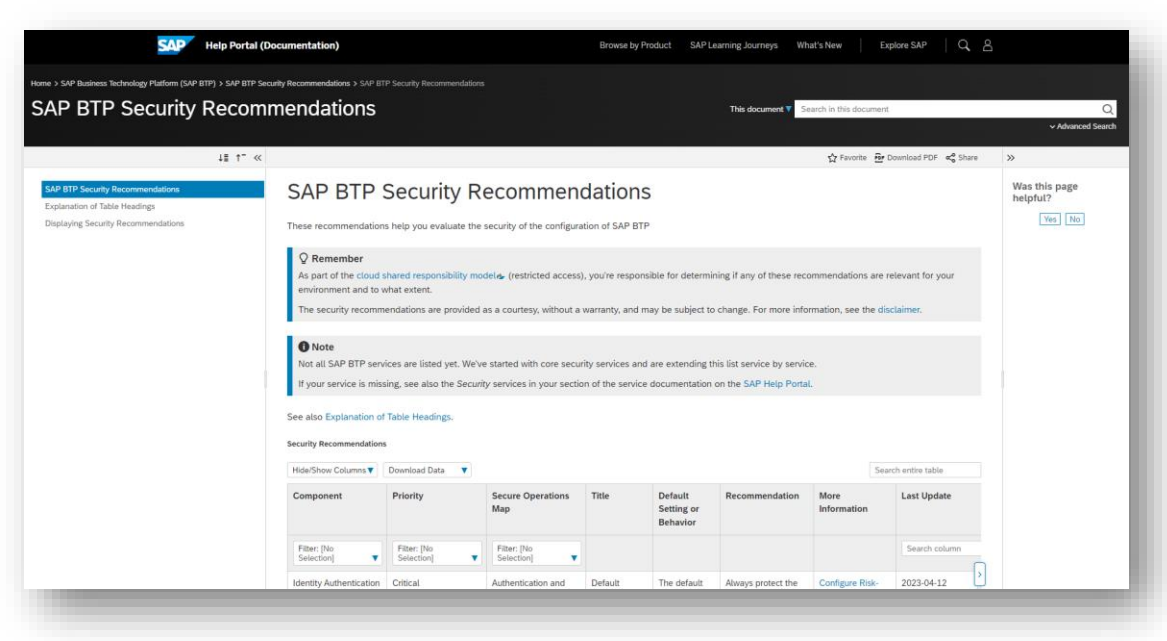


The SAP BTP Developer's Guide offers developer guidance to software developers on how to implement business applications as an integrated part of SAP software on SAP BTP.

It consists of:

- Architecture blueprint with a curated list of services implementing business applications on SAP BTP
- Description of the software development and delivery processes
- Instructions on how to deliver cloud and suite qualities

SAP BTP Security Recommendations

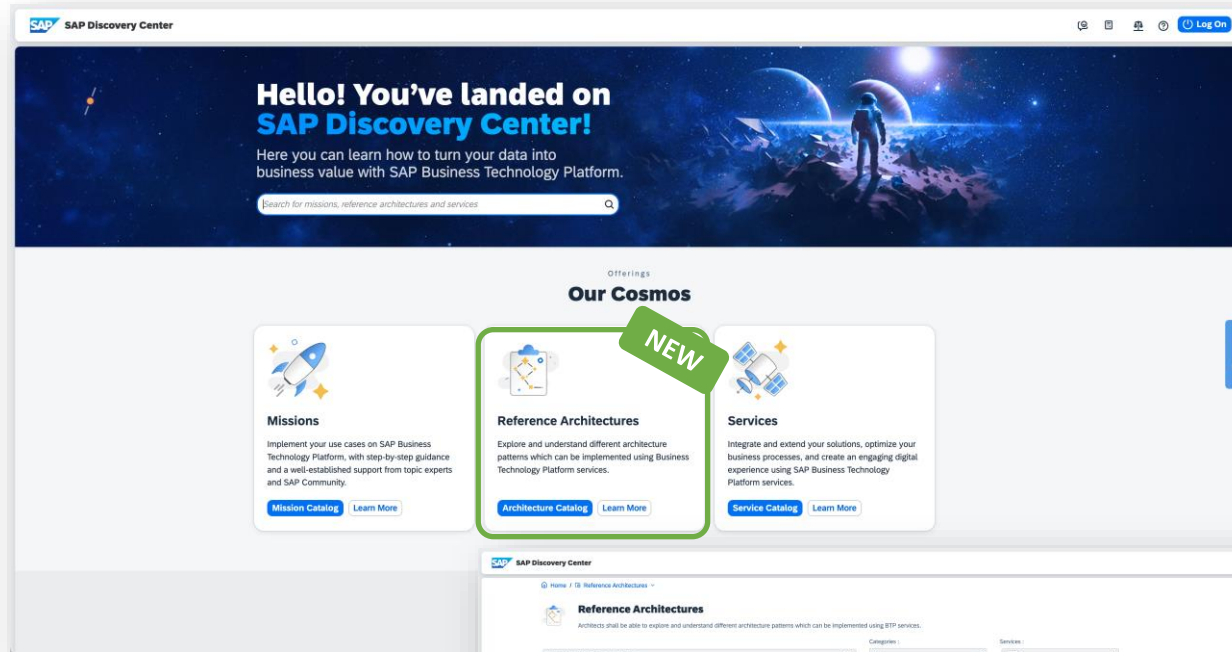


We provide a list with our recommendations for the configuration of SAP BTP services.

These recommendations help you to meet your compliance goals and secure your business.

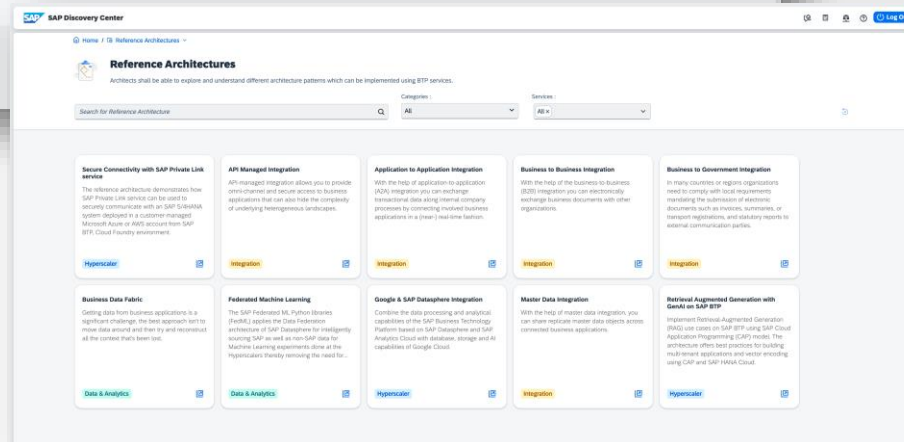
Can be used to create a security baseline template.

Reference Architectures



Explore reference architectures for SAP BTP at SAP Discovery Center

- Architecture diagrams
- Guiding information
- Related SAP Discovery Center missions



SAP BTP Reference Architectures

- Get to know SAP Discovery Center
- Explore the catalog of SAP BTP reference architectures
- Dive into the details of an SAP BTP reference architecture



Hello! You've landed on SAP Discovery Center!


Here you can learn how to turn your data into business value with SAP Business Technology Platform.

Search for missions, reference architectures and services

Q

Offerings


Our Cosmos



Missions

Implement your use cases on SAP Business Technology Platform, with step-by-step guidance and a well-established support from topic experts and SAP Community.


[Mission Catalog](#) [Learn More](#)



Reference Architectures

Explore and understand different architecture patterns which can be implemented using Business Technology Platform services.

[Architecture Catalog](#) [Learn More](#)



Services

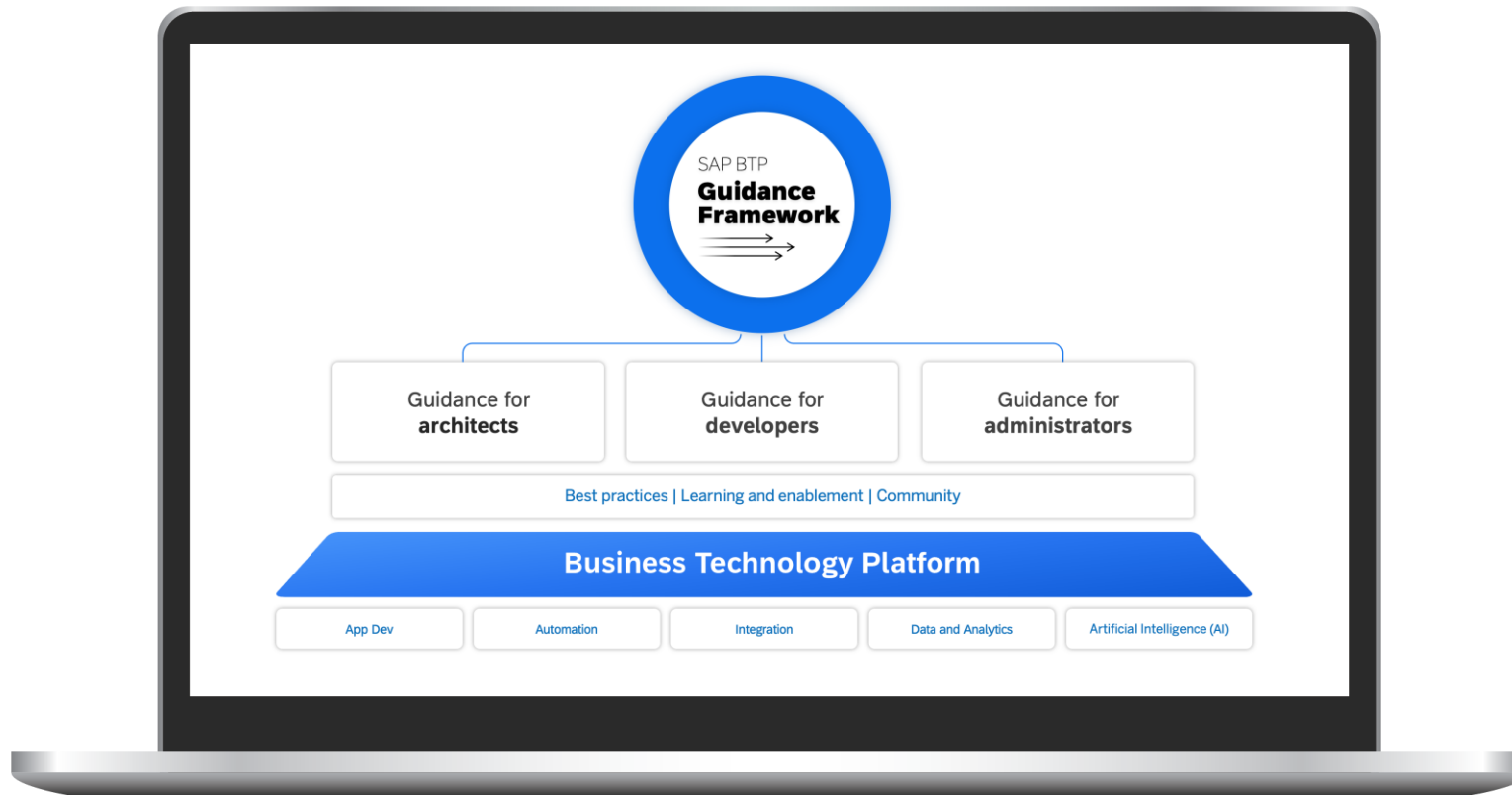
Integrate and extend your solutions, optimize your business processes, and create an engaging digital experience using SAP Business Technology Platform services.

[Service Catalog](#) [Learn More](#)

Fleet

Featured Content

Explore the SAP BTP Guidance Framework



<https://url.sap/3ifarc>

Wrap up

- SAP BTP is the innovation platform optimized for SAP applications in the cloud yet open
- SAP BTP Guidance Framework is your compass for architecting, developing and operating solutions on SAP BTP
- SAP BTP Developer's Guide helps you to develop enterprise-grade solutions on SAP BTP

Where to find more information

SAP Discovery Center

- Realize the use cases as a mission
- Be inspired by [Customer Stories](#)
- Explore how to architect solutions
- Adapt the architecture
- Analyze cost with [estimator](#)
- Gain more insights into [Roadmaps](#) and [Service plans](#)



Scan this code or
click [here](#) to learn more

Learning

- Learn SAP for free, anytime, anywhere!
- Attend high quality [learning journeys](#) for all areas of SAP BTP. Content for all levels:
 - Beginner
 - Intermediate
 - Advanced
- Get [certified](#)!



Scan this code or
click [here](#) to learn more

SAP BTP Guidance Framework

- Central access point for architects, developers, and administrators
- Guidance how to build and run enterprise-grade solutions on SAP BTP, e.g.
 - Decision Guides
 - Methodologies
 - DevOps principles
- Includes [SAP BTP Developer's Guide](#)



Scan this code or
click [here](#) to learn more

Key Points to Take Home

- SAP Business Technology Platform (SAP BTP) is the foundation for a smoothly integrated SAP portfolio.
- SAP BTP is the platform for SAP, customers, and partners to innovate and transform.
- SAP BTP is an enabler for the development of Generative AI-powered business applications across SAP's ecosystem.
- The SAP BTP Guidance Framework is your compass for architecting, implementing, and operating solutions on SAP BTP.
- Reference architectures for SAP BTP offer a template solution for an architecture and describe the interaction of BTP services with each other and with business applications from SAP, partners or third party.
- The SAP BTP Developer's Guide offers developer guidance to software developers on how to implement business applications as an integrated part of SAP software on SAP BTP.

Thank you! Questions?

Steffen Pietsch

Vice President, Head of BTP Product Management

E: steffen.pietsch01@sap.com

@steffenpietsch 

Please remember to complete
your session evaluation.

SAPinsider



SAPinsider.org

PO Box 982Hampstead, NH 03841
Copyright © 2023 Wellesley Information Services.
All rights reserved.

SAP and other SAP products and services mentioned herein as well as their respective logos are trademarks or registered trademarks of SAP SE (or an SAP affiliate company) in Germany and other countries. All other product and service names mentioned are the trademarks of their respective companies. Wellesley Information Services is neither owned nor controlled by SAP SE.

SAPinsider comprises the largest and fastest growing SAP membership group worldwide, with more than 750,000 global members.
