



Streamlining Business Operations: Maximizing Efficiency with SAP S/4HANA and SAP Signavio

Ian Humphries, SAP

SAPinsider
2023

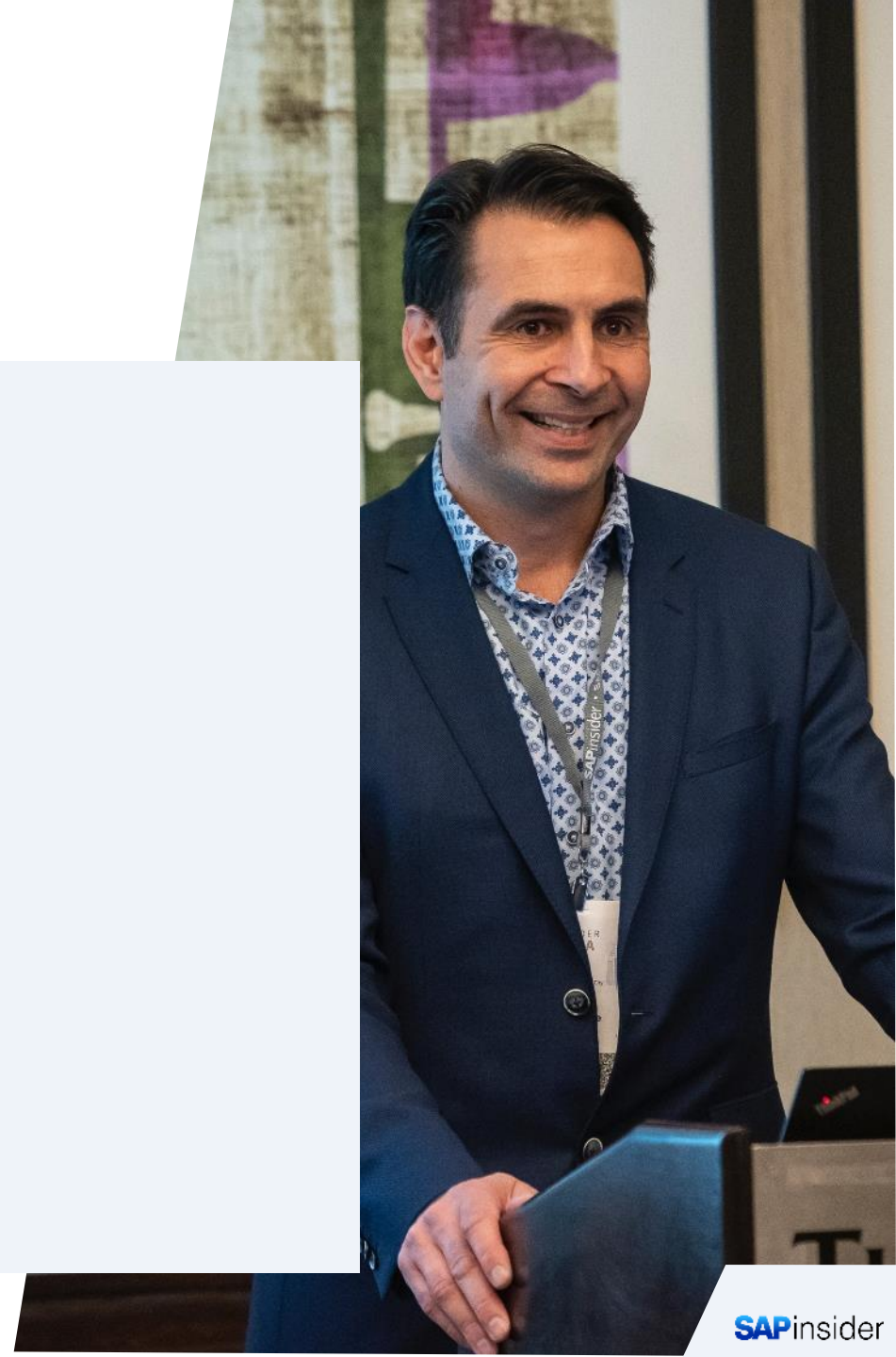


In This Session

- You'll learn what is Signavio and its various components
- How to integrate Signavio into SAP Activate?
- What other Tools and Accelerators are available
- Q&A

Agenda

- SAP Signavio Toolset
- Pre-Project Use Cases
- Integration with SAP Activate
- Continuous Improvement
- Wrap Up



INSTAGRAM



REALITY



Expectations

vs

Reality

- Return on Investment
- Standardization
- Effective Governance
- Adopt a Cloud Mindset
- Accelerated Deployment

- What's value and did we actually get any?
- "But we NEED that change!"
- Do whatever the business needs!
- Make the product fit our requirements
- Avoid business disruption at all costs

SAP Signavio Process Transformation Suite

An SAP Signavio offering

Collaboration

Stakeholder alignment and active collaboration across departments

Process analysis and mining

Complete process analysis for enterprise transformations and operational excellence programs

Process and journey modeling

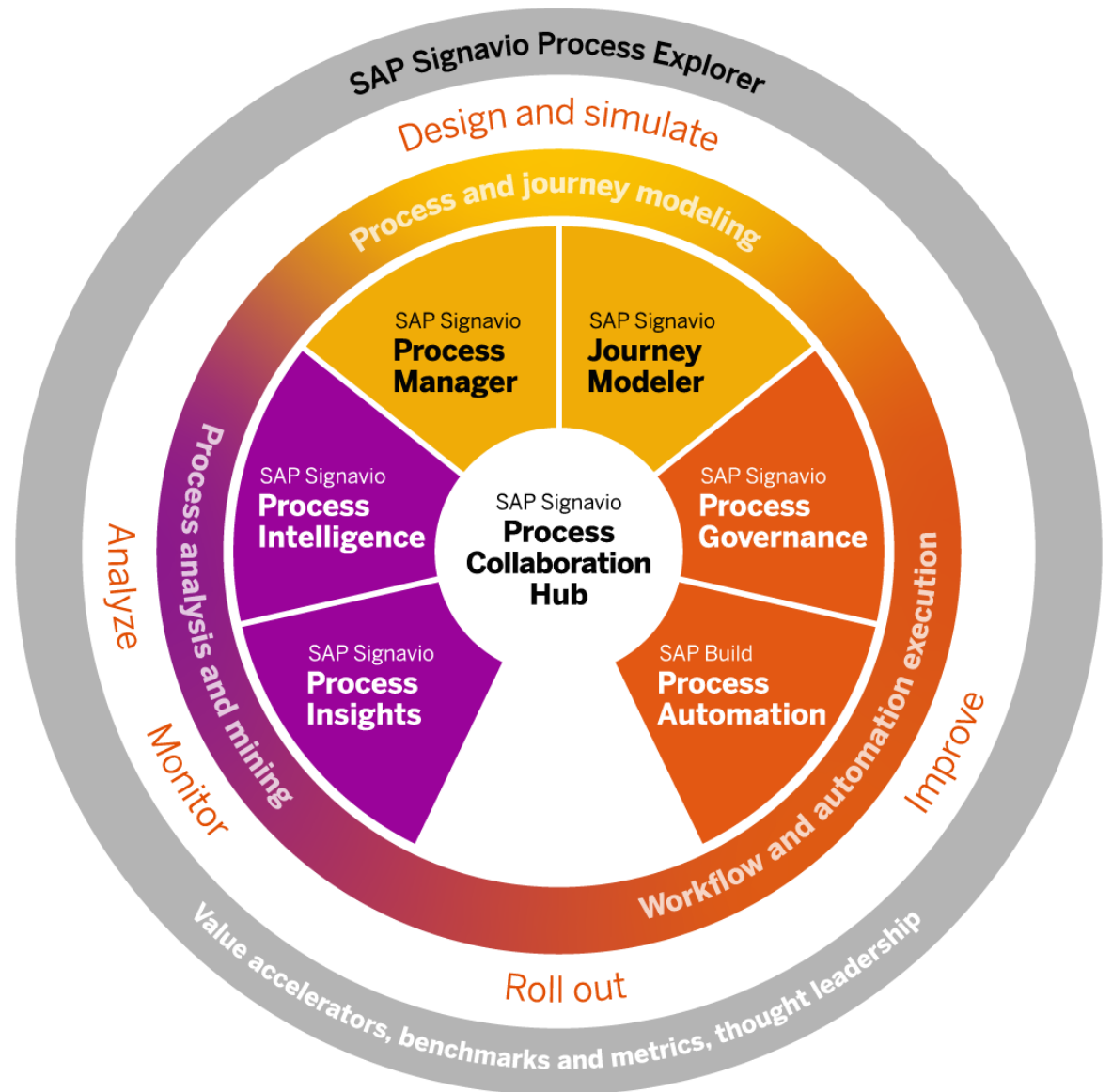
Standardized process and journey management, simulation, and modeling

Process governance and automated execution

Maintaining organizational and regulatory compliance of all documented processes

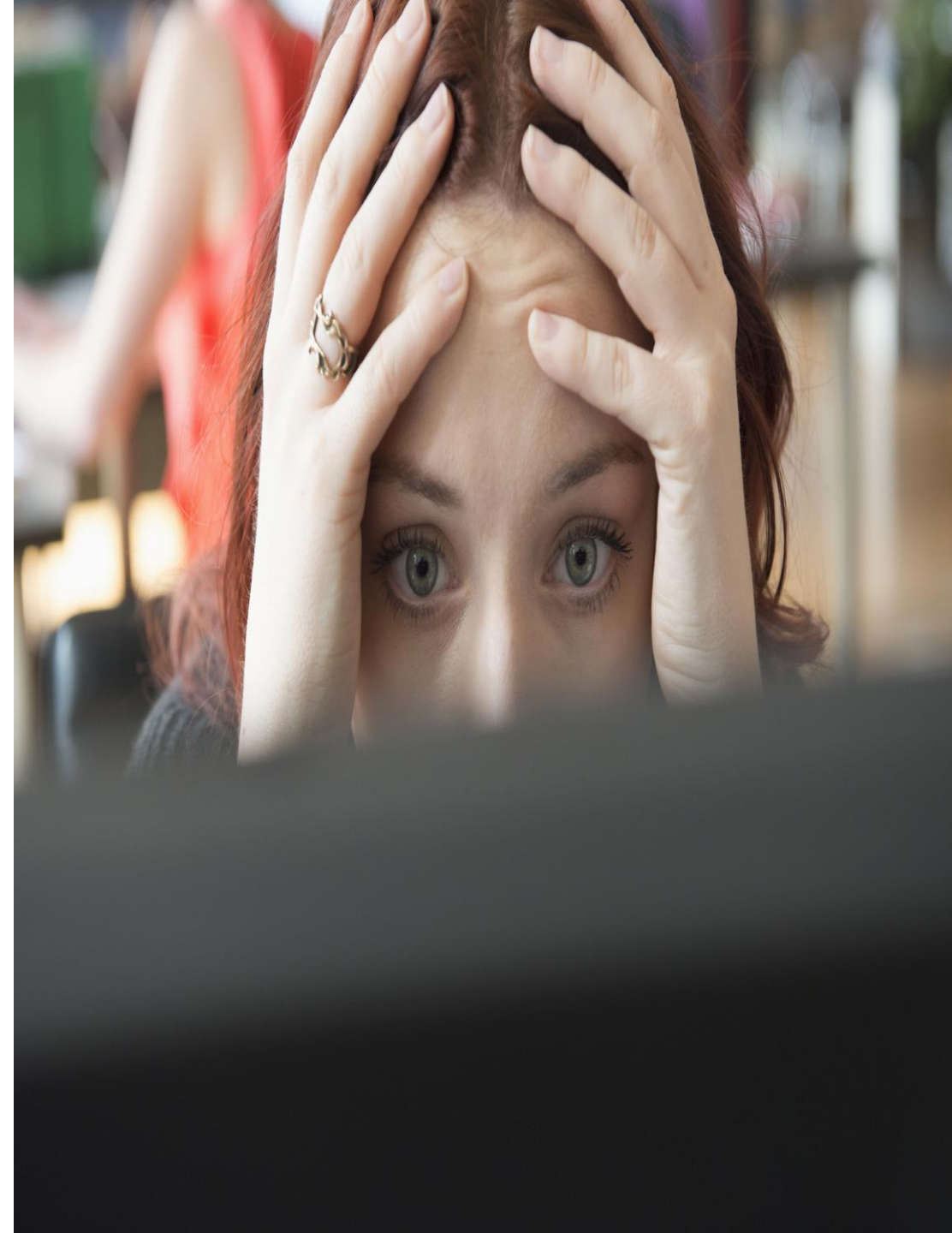
Value accelerators

Speeding up time to value with pre-configured value accelerators and resources at your fingertips



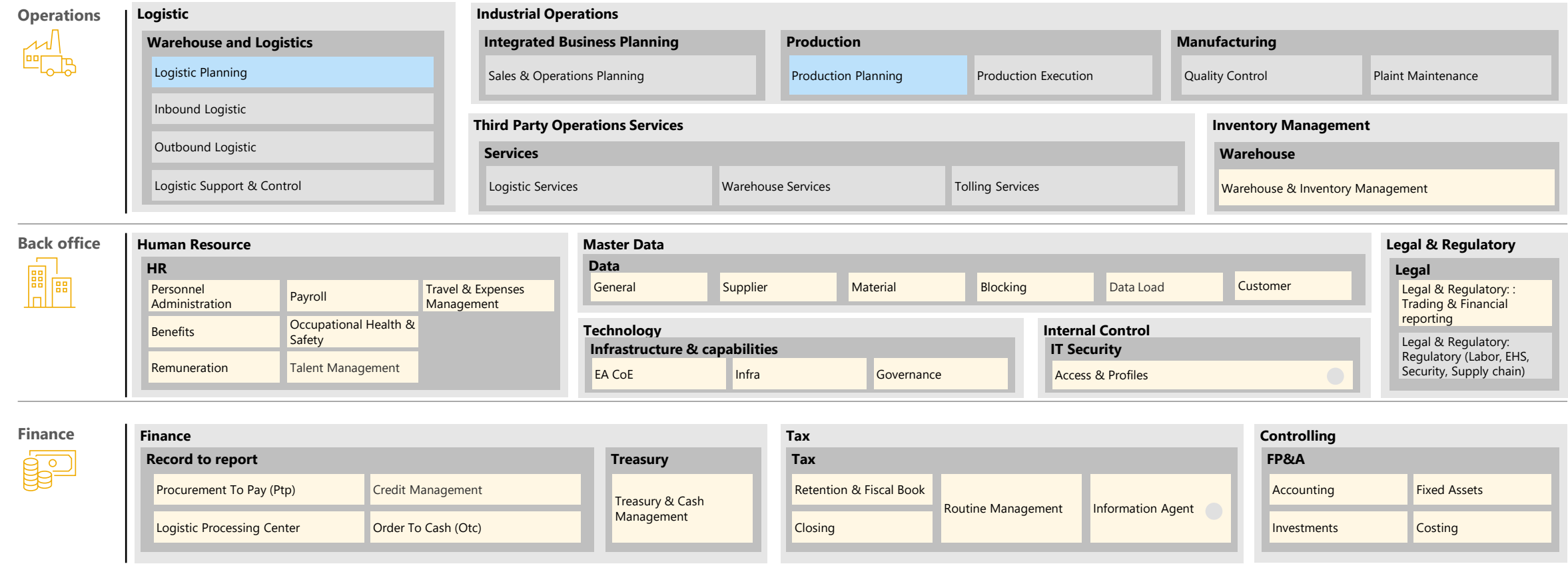
Time for some therapy

- What processes are we good at?
- What processes are we bad at?
- What processes do we need to be good/better/best at?
- If we are bad at something, is it strategic or commoditized processes?
- Do we think we are good at something but are actually bad in comparison to our peers?
- Are our processes good because of the process or the people running them?
- Are our processes bad because of the process or the people running them?

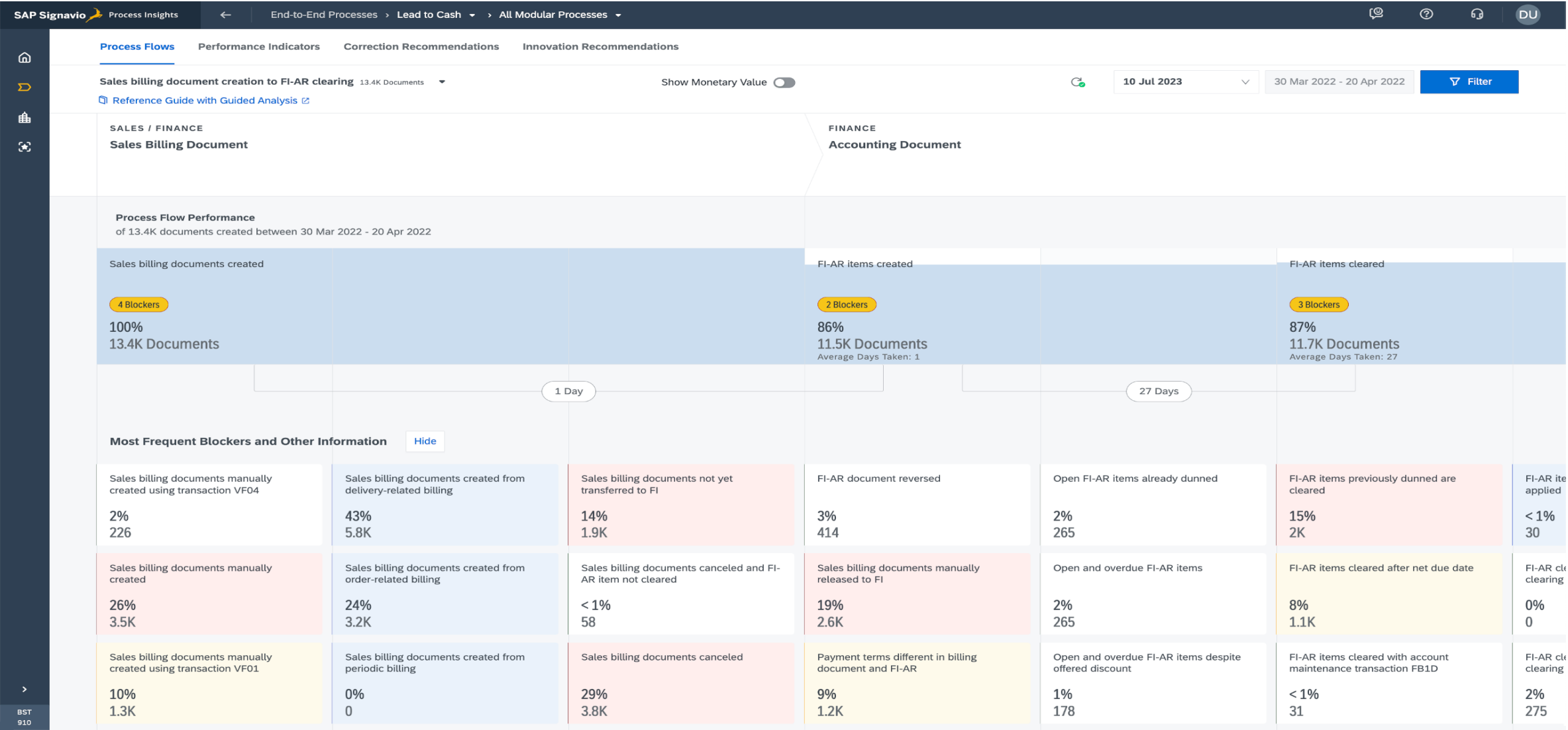


Business Process Segmentation

Enterprise transactions Business specific Competitive advantage



Process Insights

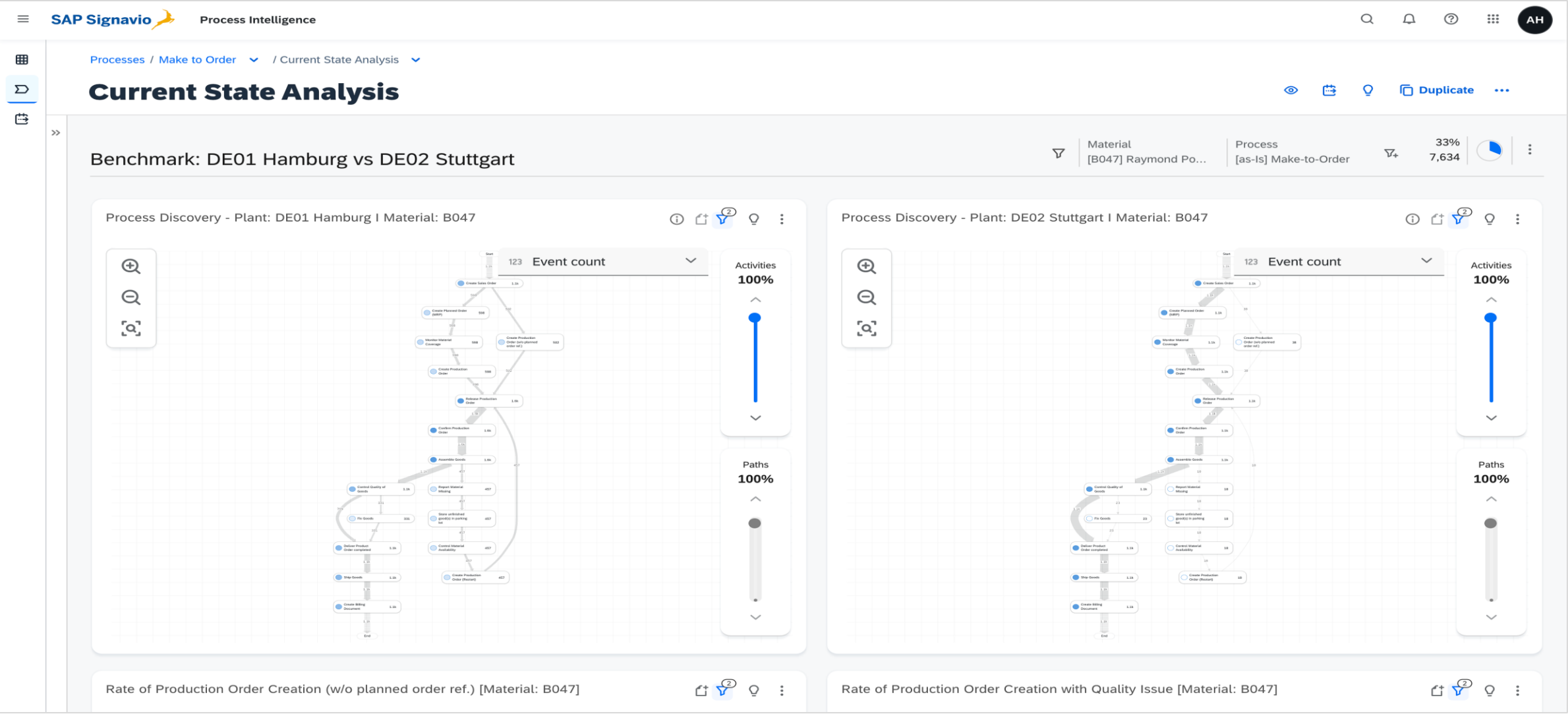


>

BST

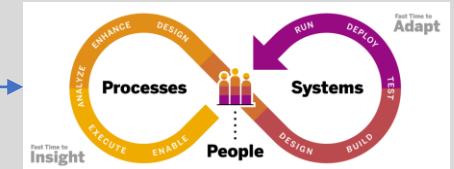
910

Process Intelligence

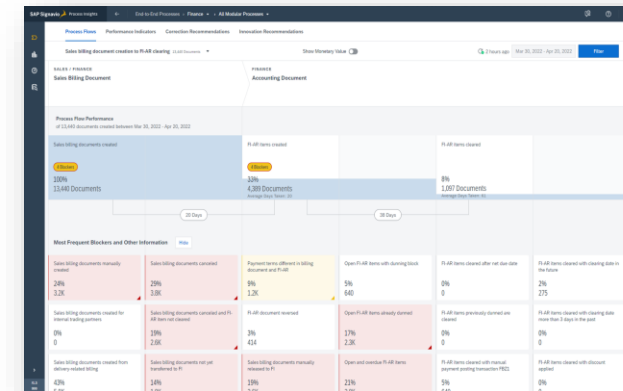


Process Driven SAP S/4HANA Transformation with SAP Signavio

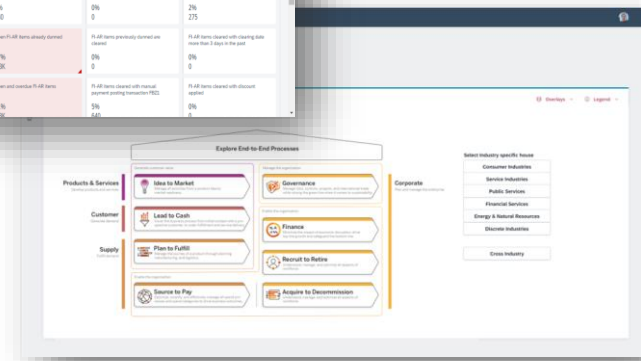
Speed time to value | Accelerate Design | Improve Fit-to-Standard



- Get fast and deep insights into current **process execution**
 - KPIs measurement & benchmarking
 - Data-driven process flow visualization
 - As-is process analysis (expert exploration)
- Derive **data driven optimization potentials**
 - Implement correction recommendations already in current environment (“quick fixes”)
 - Clean up of the master data
 - Leave business process variants behind that are not used
- Determine **business value** and **improvement potentials**
 - Explore innovation recommendations
 - Prioritize optimization opportunities
- Explore **best practice processes** and reference architectures
- Design optimized future state design

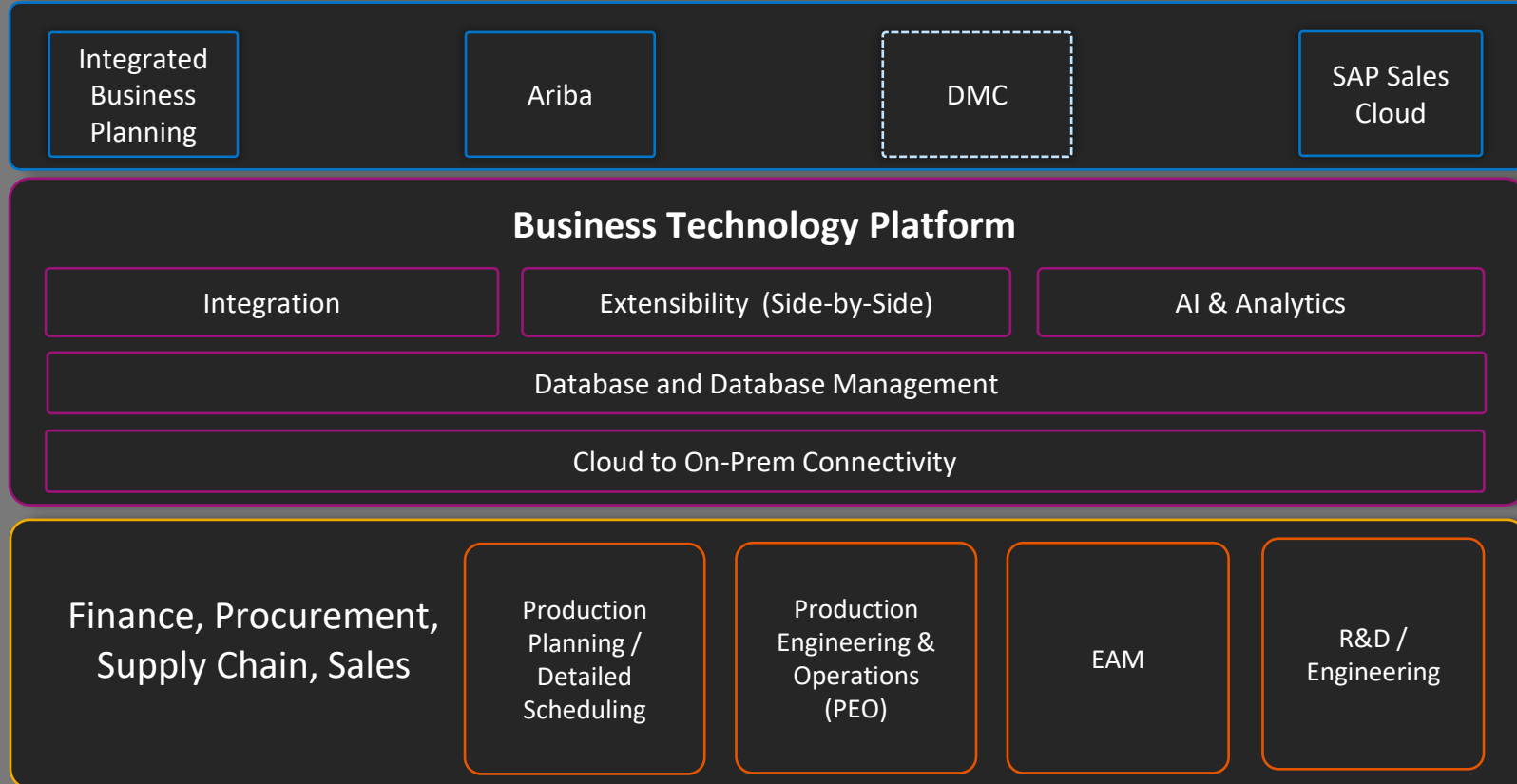
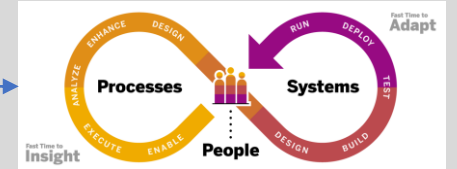


SAP Signavio Process Insights



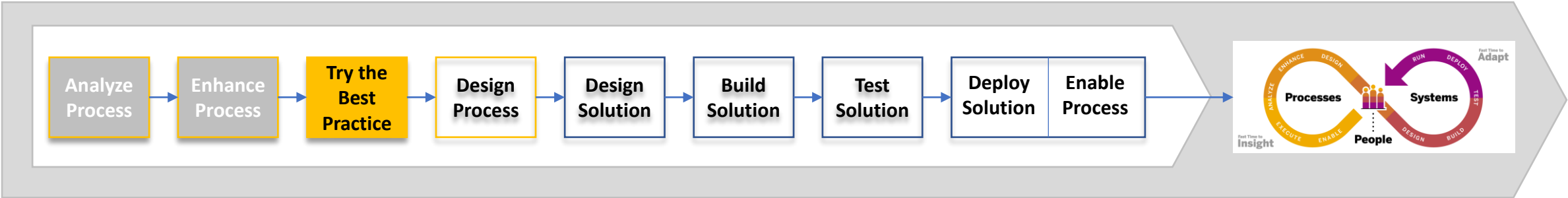
SAP Signavio Process Explorer

Advanced Manufacturing - Reference Architecture



- 235+ Preconfigured Processes
- 11+ Functional Domains
- Production Ready Landscapes
- Fully Documented
 - Test Scripts
 - Signavio Flows (Best Practices Only)
 - Config Guides
- Replaceable Chart of Accounts
- 300+ Preactivated Fiori applications

SAP EnableNOW



<

SAP

Audit Journal ▾

Standard* ▾

Display Journal Entry Changes

Check Multi-Referenced Invoices

Check Gaps in Journal Entry Numbering

EG

Company Code:*
1710

Fiscal Year:*
2021

Posting Date:

Ledger:*
0L (Ledger 0)

Journal Entry Type:

Go

Adapt Filters (3)

Compact Journal

Journal

Compact Journal (36)

Standard ▾

Journal Entry Type	G/L Account - Debit	G/L Account - Credit	Customer - Debit	Customer - Credit	Supplier - Debit	Supplier - Credit	Dr. Amount in Compa...	Cr. Amount in Compa...
> Ledger Fiscal Period: 001	36,206.00 USD	-49,579.00 USD	0.00 USD	0.00 USD	0.00 USD		0 USD	-49,785.00 USD
> Ledger Fiscal Period: 002	48,000.00 USD	-48,000.00 USD	0.00 USD	0.00 USD	0.00 USD		0 USD	-60,551.00 USD
> Ledger Fiscal Period: 006	1,011,810.79 USD	-55,281,066.52 USD	122,319.90 USD	-6,000.00 USD	6,000.00 USD		1 USD	-56,015,017.31 USD
> Ledger Fiscal Period: 007	296,613.63 USD	-1,100,178.38 USD	30,117.26 USD	-9,557.44 USD	350.00 USD		5 USD	-1,270,967.15 USD
> Ledger Fiscal Period: 008	70,721.74 USD	-66,921.57 USD	12,282.40 USD	0.00 USD	1,300.00 USD		1 USD	-106,175.41 USD
> Ledger Fiscal Period: 012	3,934.09 USD	0.00 USD	0.00 USD	0.00 USD	0.00 USD		9 USD	-3,934.09 USD
	1,467,286.25 USD	-56,545,745.47 USD	164,719.56 USD	-15,557.44 USD	7,650.00 USD		6 USD	-57,506,429.96 USD

There is a better way.

↺

Try again

▶

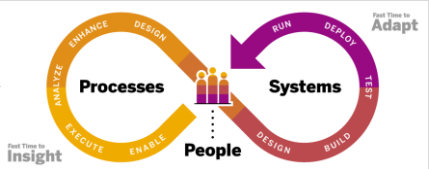
Go on to next step

Do you need help?

?

show guidance

Design with Empathy



Jane Collings
SAP Signavio

Prospect to Advocate Journey

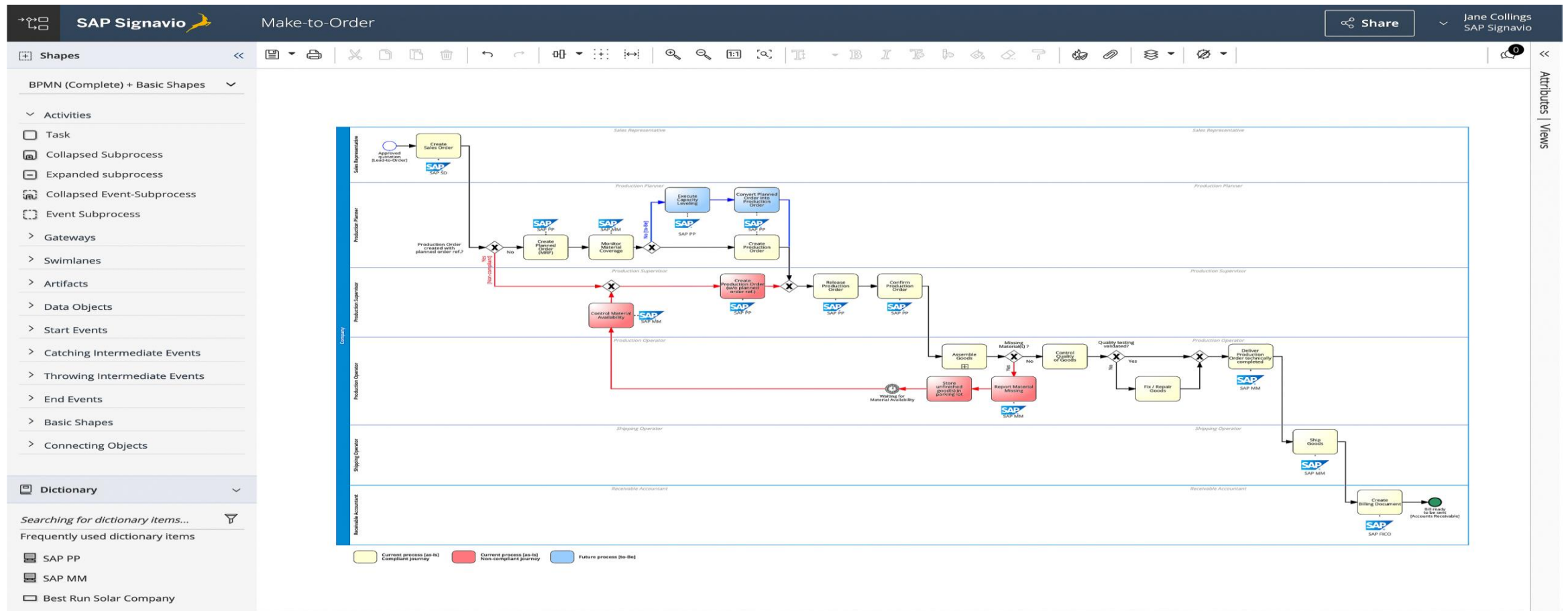
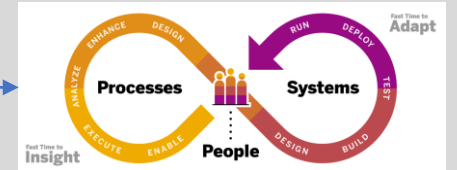
Stages

Advanced

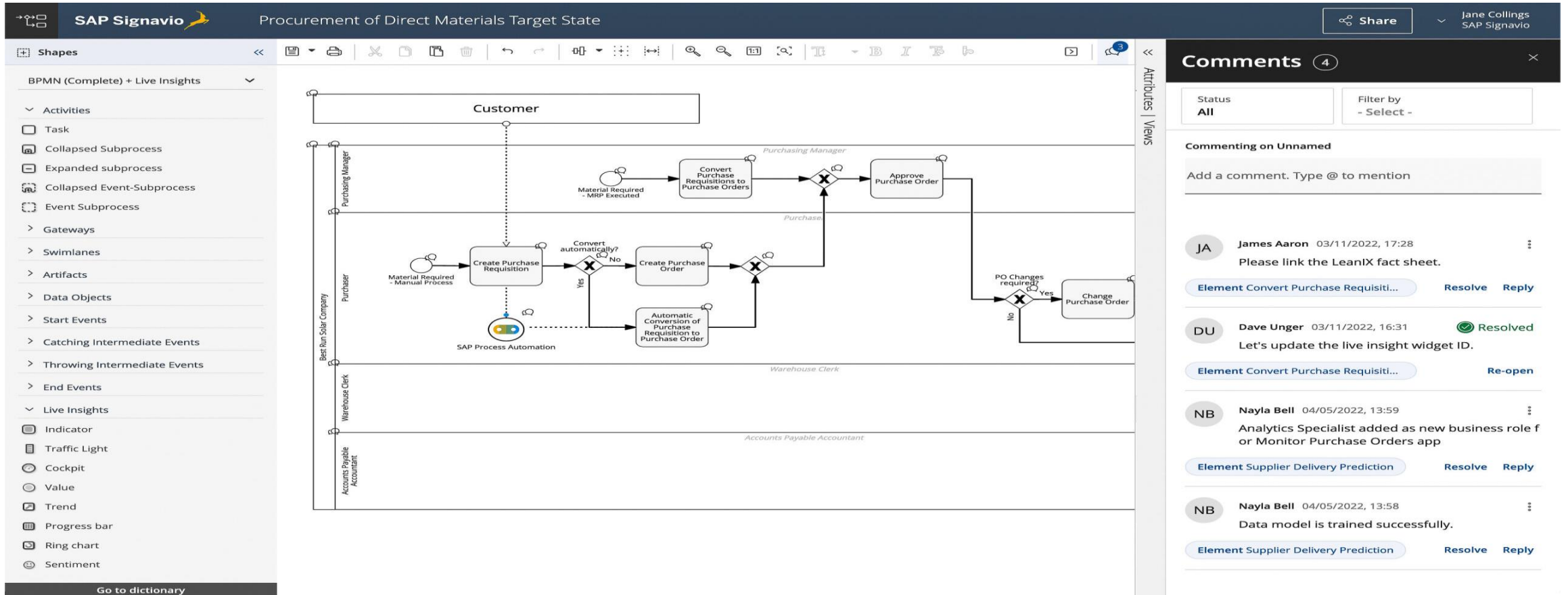
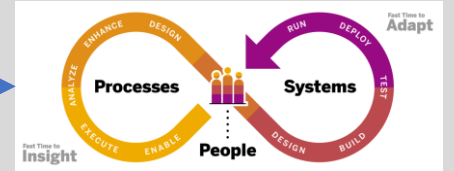
	ENGAGE	PURCHASE	INSTALLATION	USAGE			
	 Conduct Marketing Campaign	 Provide Online Quote	 Assess Site	 Agree on Contract	 Order to Power On	 Order to Power On	 Det
Organizational Units	<div>Marketing</div> <div>Head of Marketing</div> <div>Digital Sales</div> <div>Customer</div> <div>Installation Team</div> <div>Sales Representative</div> <div>Back Office</div> <div>Local Government</div> <div>Local Building Department</div> <div>Customer Service</div> <div>Add new line</div>						
IT Systems	<div>SAP CRM</div> <div>SAP ERP</div> <div>SAP CPQ</div> <div>SAP Ariba</div> <div>Add new line</div>						

Add section

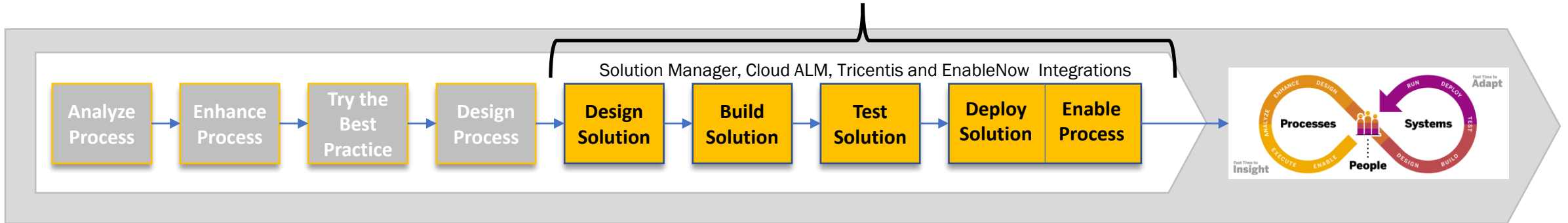
Design Target Process Model



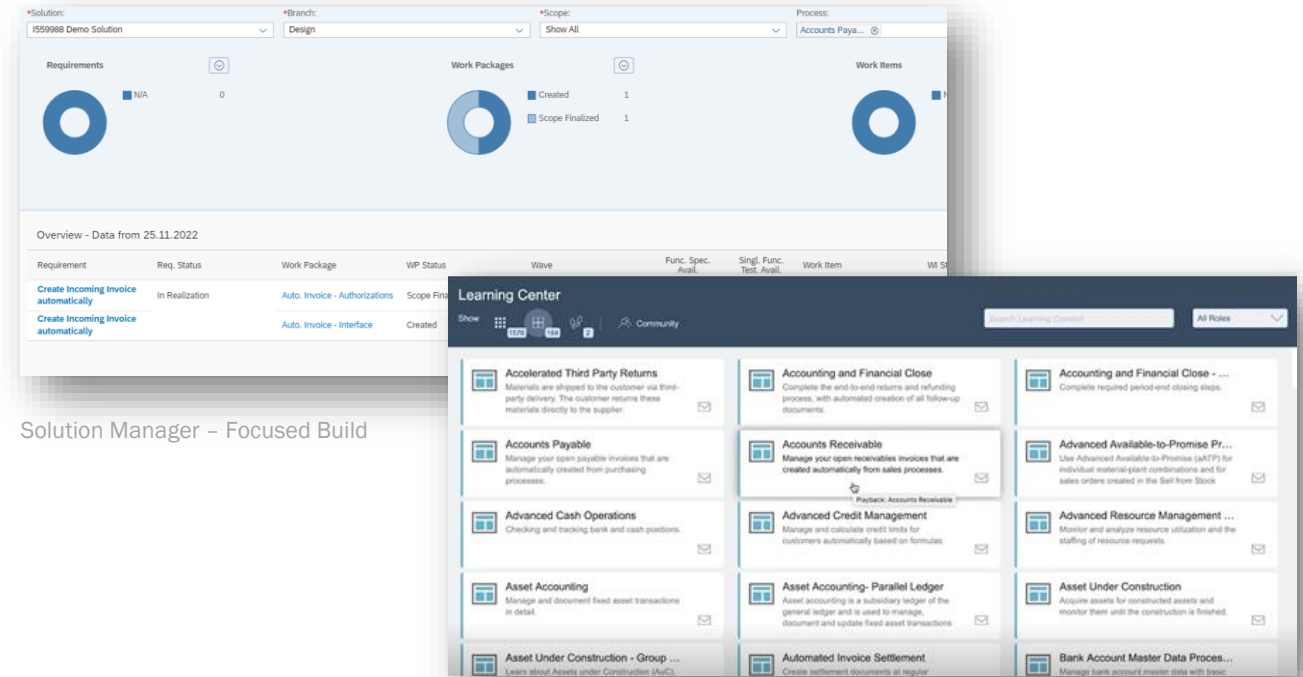
Share and Collaborate – Significant OCM and Quality Benefits



Share and Collaborate – Significant OCM and Quality Benefits

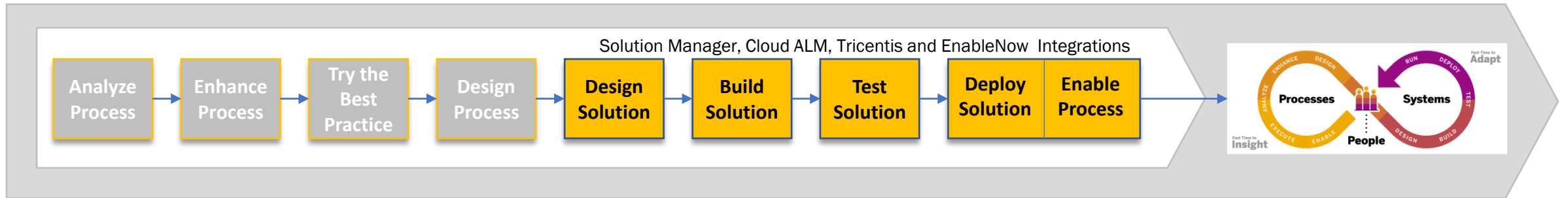


- **Handover of business requirement** to solution architects, translate changes into **Solution Design**
- Perform solution changes through **Backlog and DevOps pipeline**:
 - Implement new processes, perform system changes (e.g. customizing)
 - Prepare **user acceptance testing** and execute **process-oriented testing**
 - **Approve solution**
- **Enable** the business in executing the **new process** in an efficient way **running on the new solution** (Change Management)
- Perform **go-live**

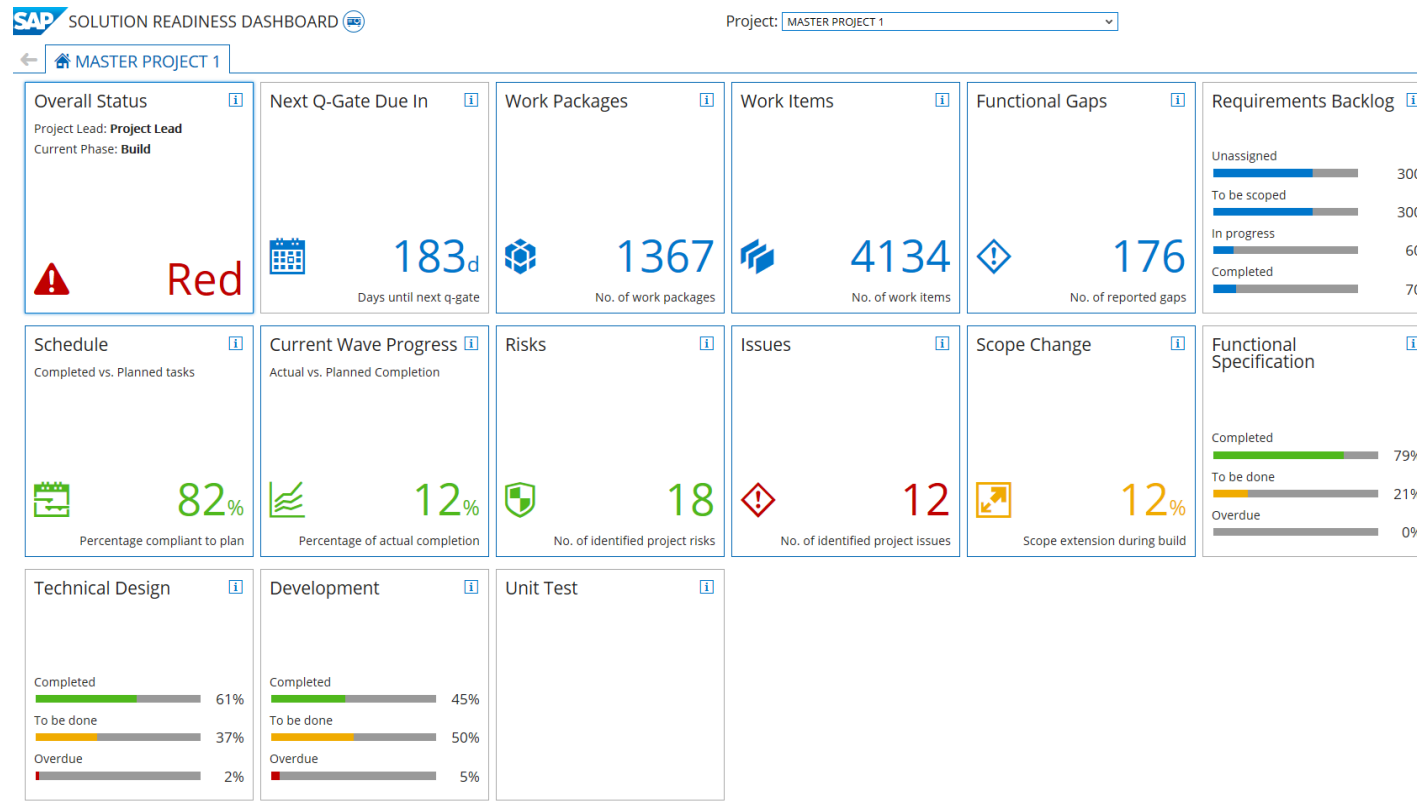


SAP Enable Now

Integrate and Extend Value

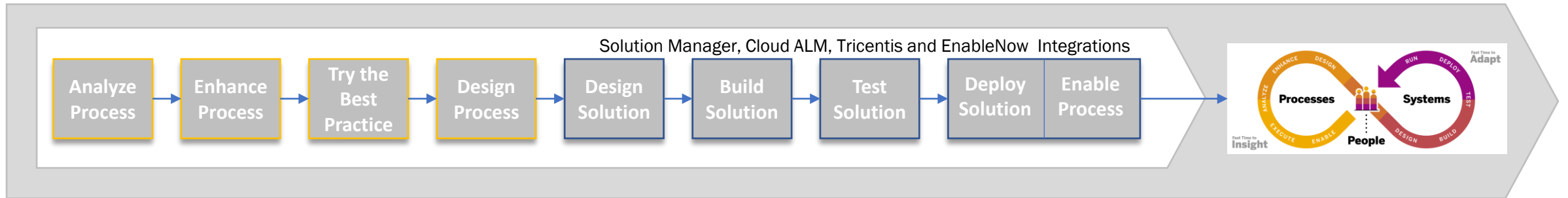


SAP Signavio



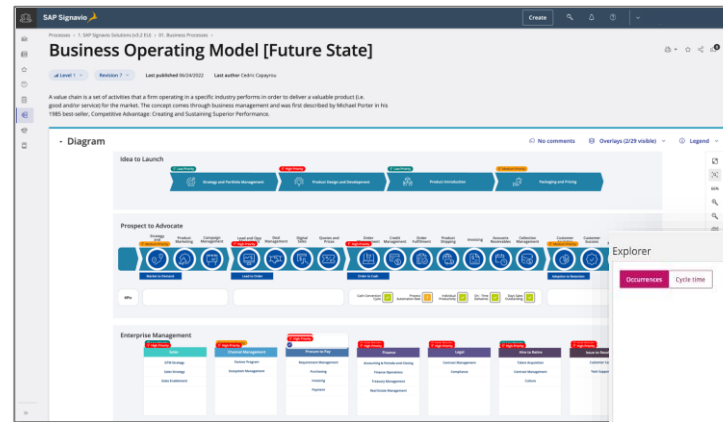
System Configuration

Close the loop!

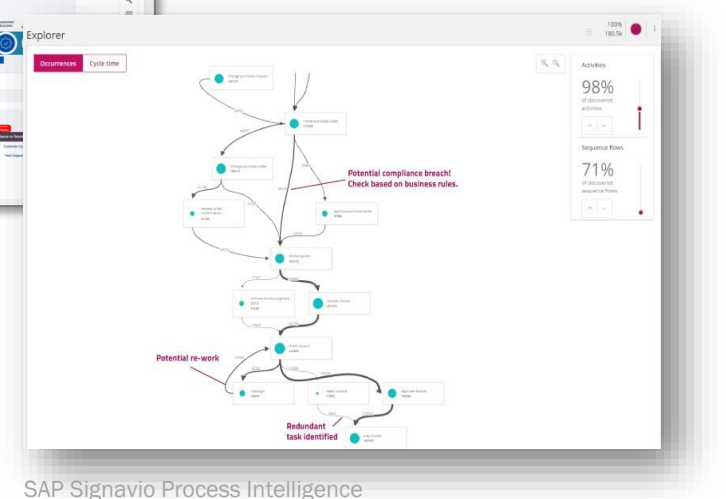


- **Continuously optimize** your new processes by ...

- getting fast and deep insights into new **process execution**
- collaboratively rethink and redesign your **business processes**
- defining new **business requirements** and innovating solutions



SAP Signavio Collaboration Hub



SAP Signavio Process Intelligence

Wrap up

- Only scratched the surface of what is possible with the SAP Signavio toolsets
- The question is “What kind of BPM organization do you want to be?” and use the tools and methodologies appropriately for your value needs
- Be cautious of non-SAP generated content as some process models are not SAP specific and can result in significant development effort and cost

Where to Find More Information

- [Transforming Your Business with SAP Signavio](#)
- [SAP Signavio in a SAP S/4HANA Transition](#)
- [Analyze Your Business Processes with SAP Process Insights](#)
- [SAP Signavio Services Overview](#)
- [SAP Signavio Blogs \(100s\)](#)

Key Points to Take Home

- In order to properly design and build for the future you must understand the present by using Process Insights and Process Intelligence to turn emotion into facts
- Use Collaboration Hub to encourage feedback, involvement, and completeness of your processes
- Considering making Process Management the Start and End of the IT lifecycle
- Follow up for more!

Key Points to Take Home



INSTAGRAM



REALITY

Ian Humphries

Please remember to complete
your session evaluation.

SAPinsider



SAPinsider.org

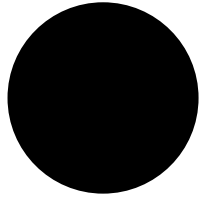
PO Box 982Hampstead, NH 03841
Copyright © 2023 Wellesley Information Services.
All rights reserved.

SAP and other SAP products and services mentioned herein as well as their respective logos are trademarks or registered trademarks of SAP SE (or an SAP affiliate company) in Germany and other countries. All other product and service names mentioned are the trademarks of their respective companies. Wellesley Information Services is neither owned nor controlled by SAP SE.

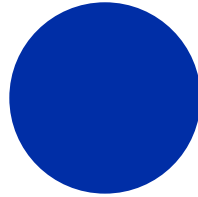
SAPinsider comprises the largest and fastest growing SAP membership group worldwide, with more than 750,000 global members.

SAPinsider Color Palette

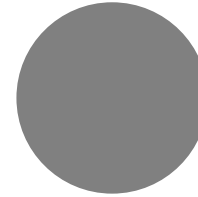
Primary



• Black #000000



Navy Blue #002EA6

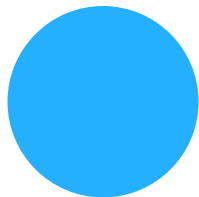


Gray #808080

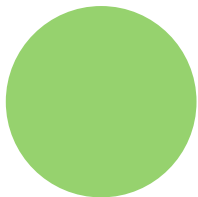


Blue Tint #EFF3F9

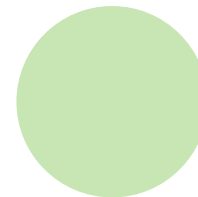
Secondary



Bright Blue #24B0FF



Green #96D26E



Green Tint #C8E6B4

Icons

