



# Top Tips To Maximize Your Investment In SAP S/4HANA

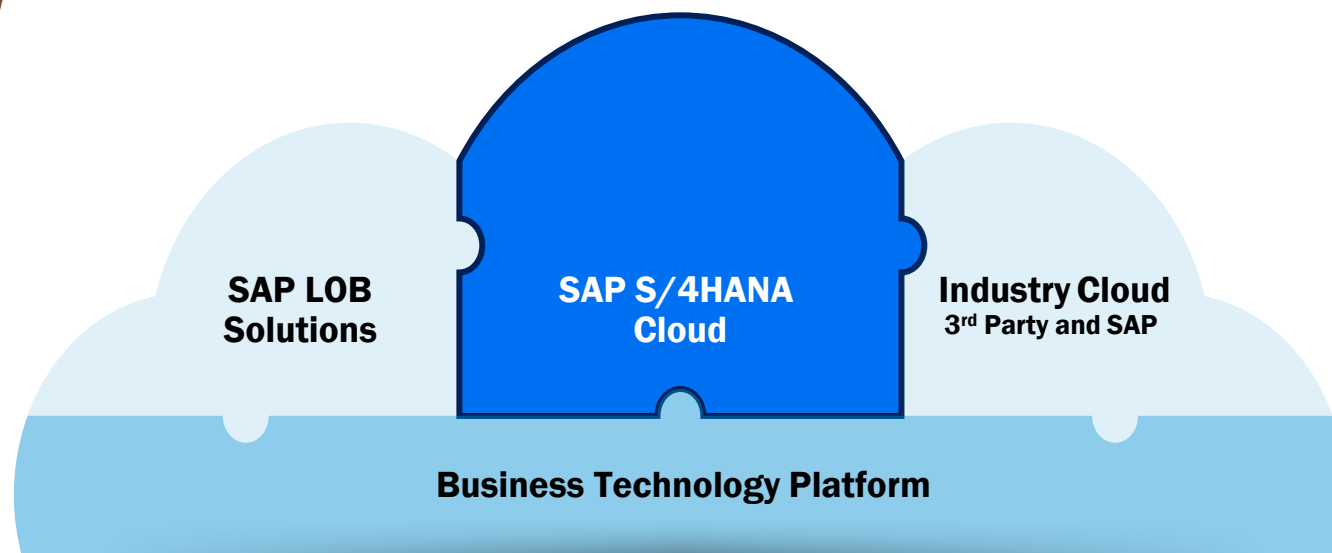
Mark Filus, SAP

**SAP**insider  
2023

## In This Session

---

This session is designed to help your organization fully capitalize on its SAP S/4HANA ERP implementation. We will explore the various aspects of building a sustainable ERP environment, harnessing the platform's capabilities, and planning for future enhancements and upgrades.

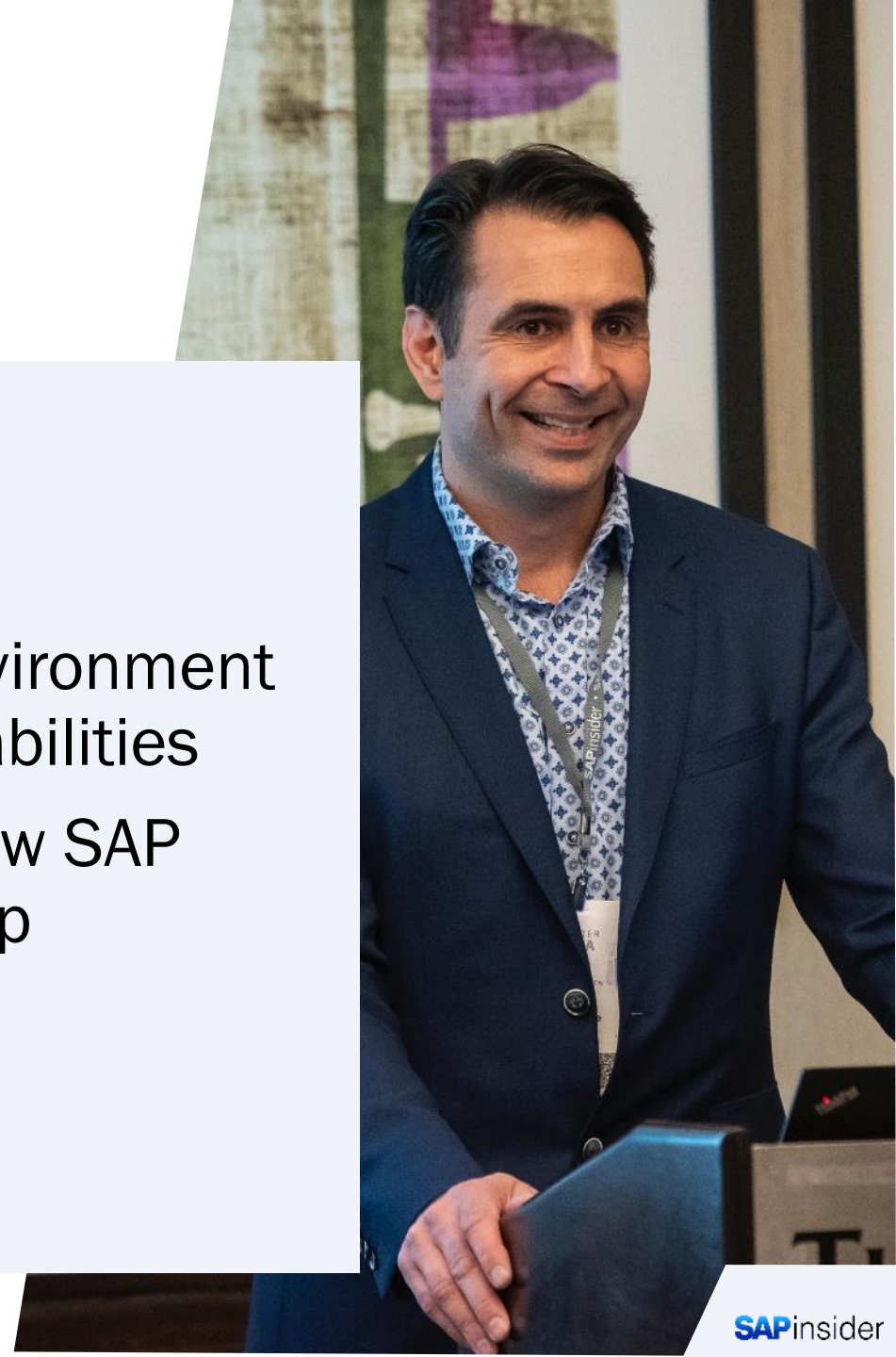




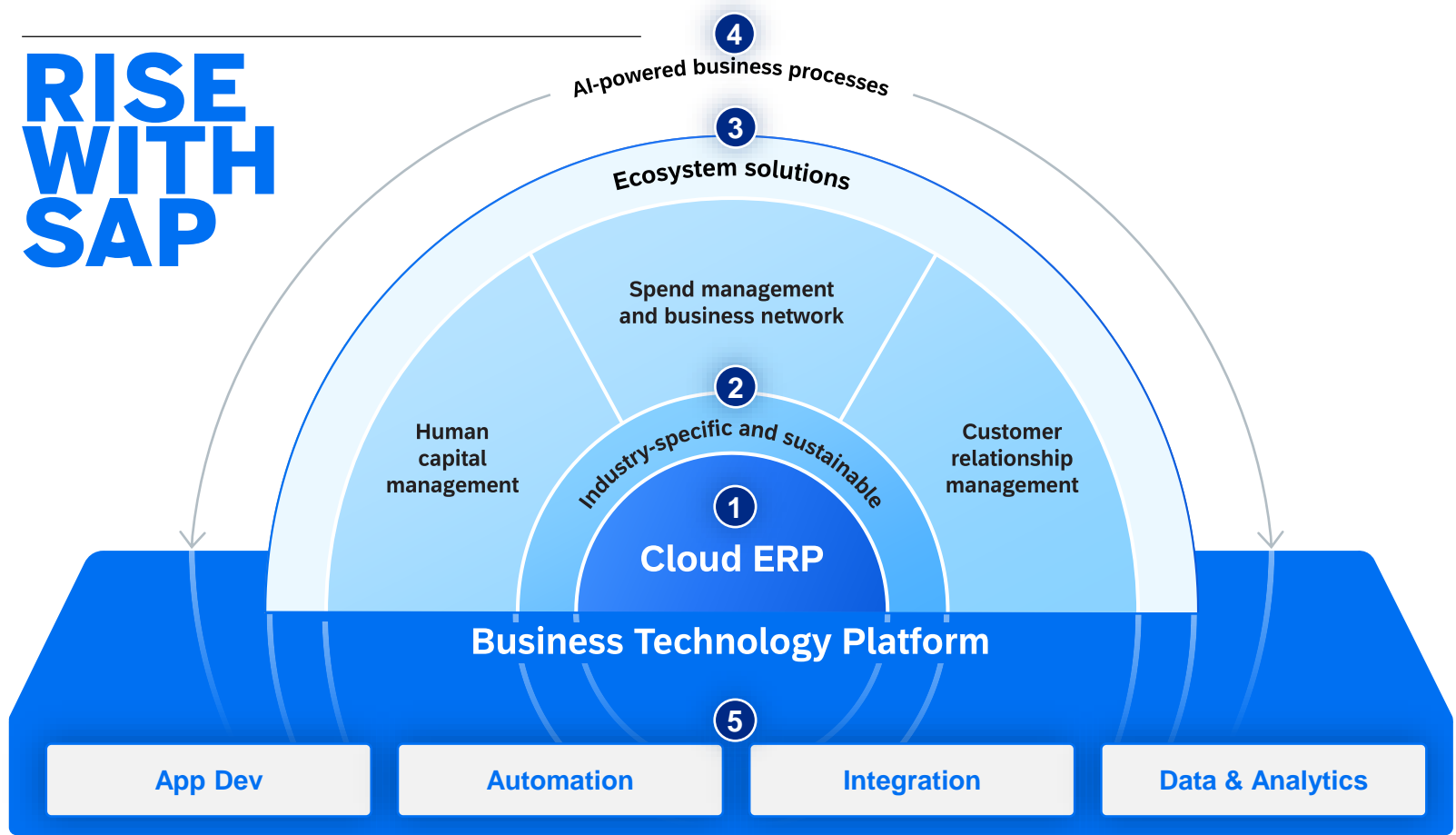
# Agenda

---

- **SAP 2023 Update**
- Building a Sustainable ERP Environment Leveraging SAP S/4HANA Capabilities
- Planning for the Future, and how SAP Enterprise Architecture can help
- Wrap Up



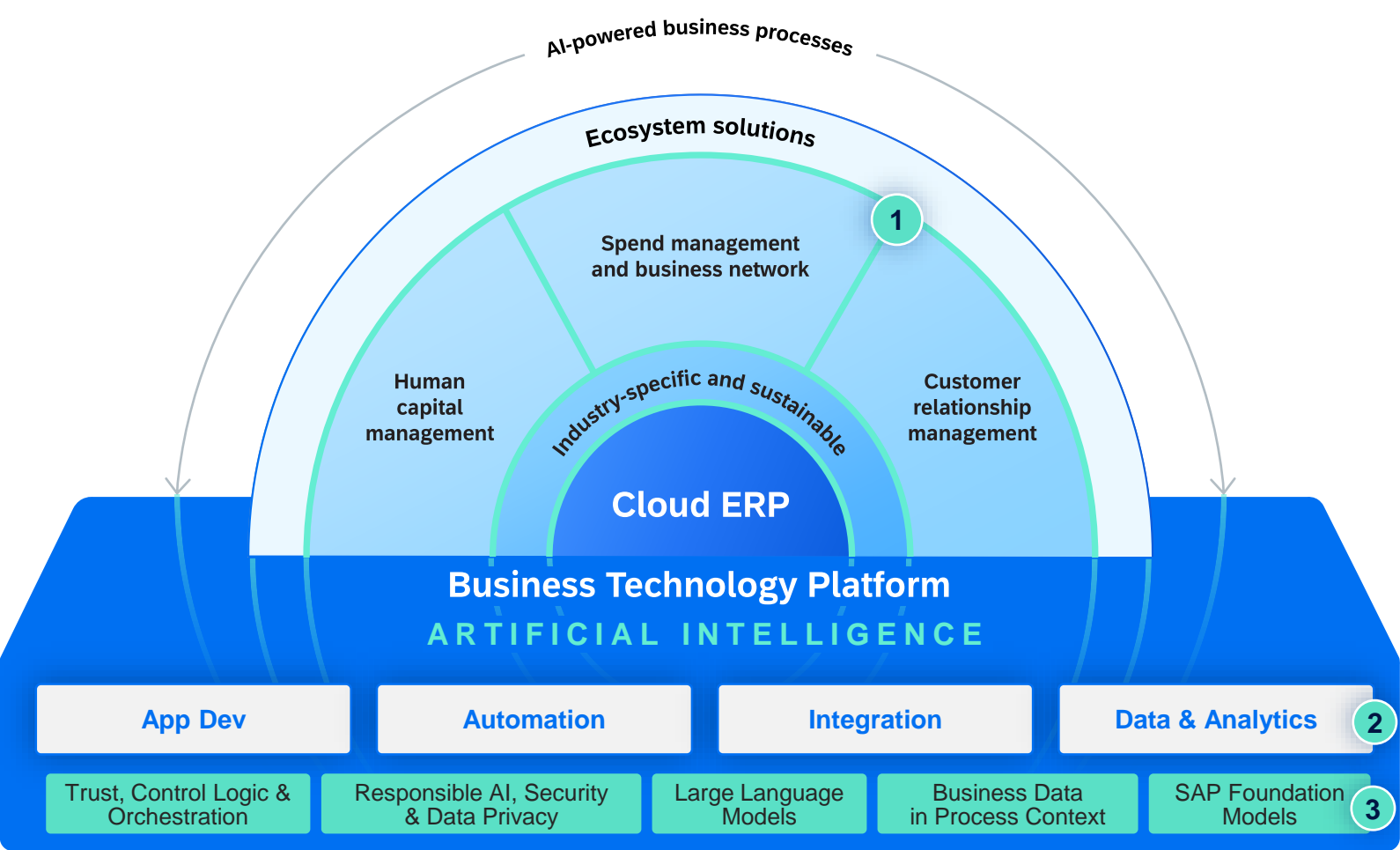
# SAP Portfolio Strategy



HELPING ORGANIZATIONS RUN THEIR BUSINESS PROCESSES FOR MORE THAN 50 YEARS

- 1 Cloud ERP**  
SAP S/4HANA Cloud at the core of your intelligent, sustainable enterprise, that provides modular connectivity across all LoB to enterprises globally
- 2 LoB and Industry Specific Solutions**  
Tailored, integrated solutions that seamlessly complement SAP S/4HANA Cloud, addressing specific business needs and industry requirements while fostering connectivity across diverse enterprise landscapes
- 3 Ecosystem Solutions**  
Cultivate a robust and open ecosystem, fostering collaboration and innovation among partners, customers, and developers to create a diverse array of solutions and extensions that enhance the value and capabilities of SAP's core offerings
- 4 AI-powered Business Processes**  
Trusted process insights, process models, and automation for the entire business
- 5 Business Technology Platform**  
Comprehensive and integrated platform that empowers organizations to seamlessly build, integrate, and extend their applications and solutions with cutting-edge technologies

# SAP Business AI Strategy with GenAI



**RELEVANT. RELIABLE. RESPONSIBLE.**

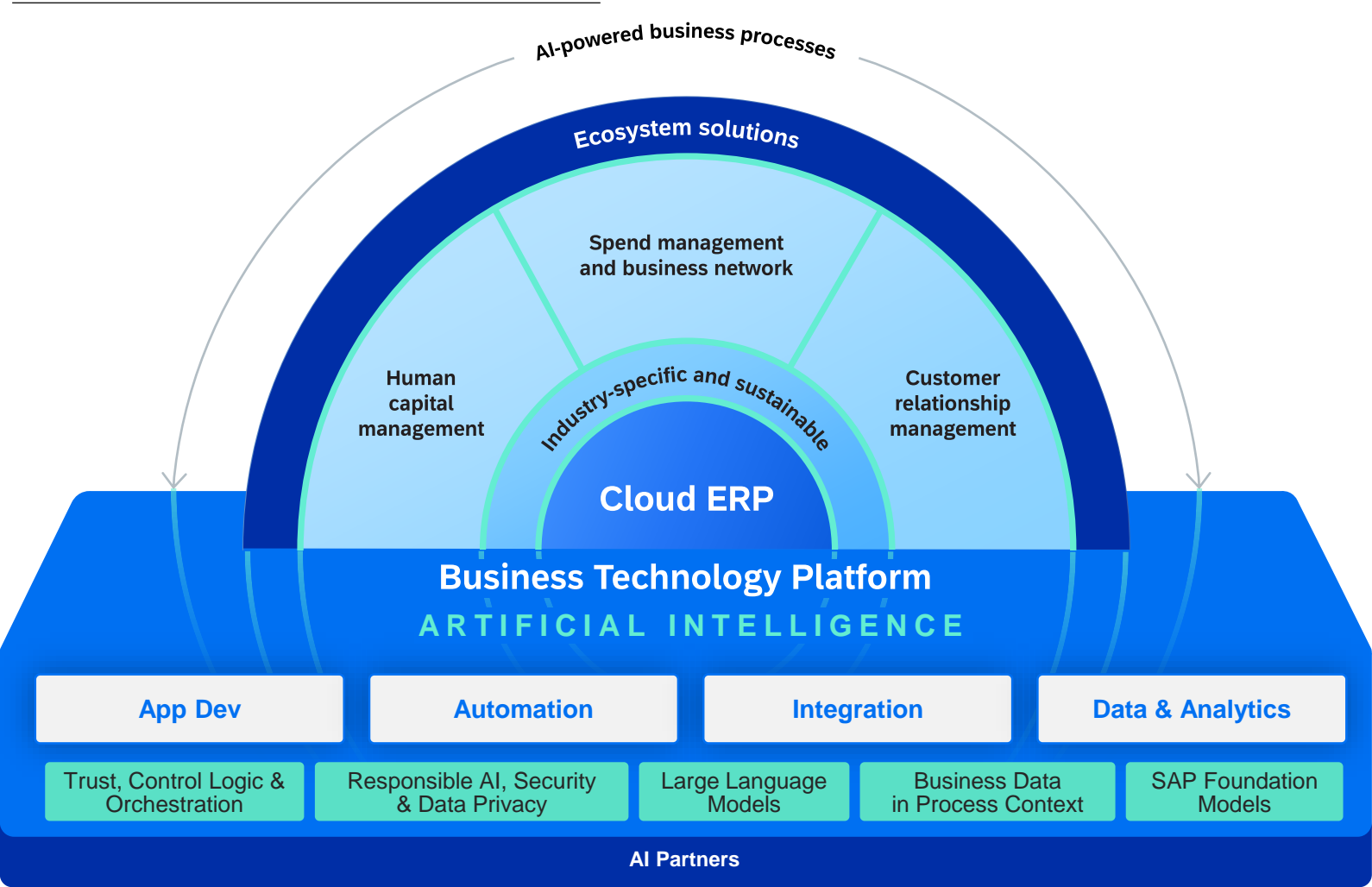
**SAP's Business AI strategy is to infuse AI into applications and business processes.**

1. **Embedded AI** in SAP applications
2. Expose **business-centric AI services** for extensions via SAP BTP
3. Build capabilities to **scale business AI** to ensure customer trust

## SAP GenAI

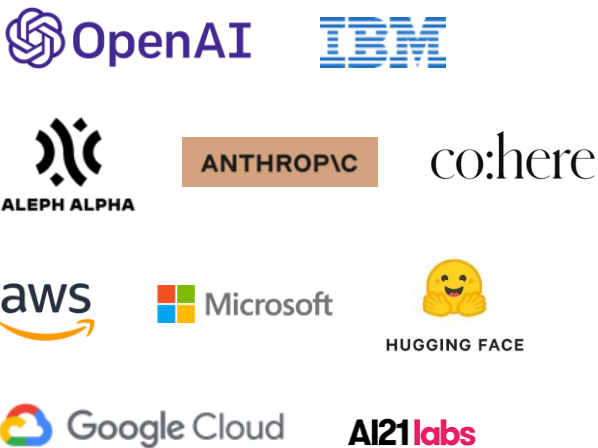
- 1 Infuse **AI features and process innovations** across all SAP and partner applications.
- 2 Provide **code generation, automation and extensibility** based on Generative AI
- 3 Provide trusted, compliant and enterprise ready integration into Generative AI partner services and **provide own capabilities based on SAP's business data.**

# SAP Business AI Strategy with Partner Ecosystem



- Selected Examples -

## AI Partner Technologies



## AI Alliances



# Key takeaways from the SAP 2023 Announcement

---

1

We are **infusing Artificial Intelligence** into applications and business processes by **embedding AI services natively in SAP applications**



2

Furthermore, we are **exposing AI services** via **SAP Business Technology Platform** to our customers and partners.



3

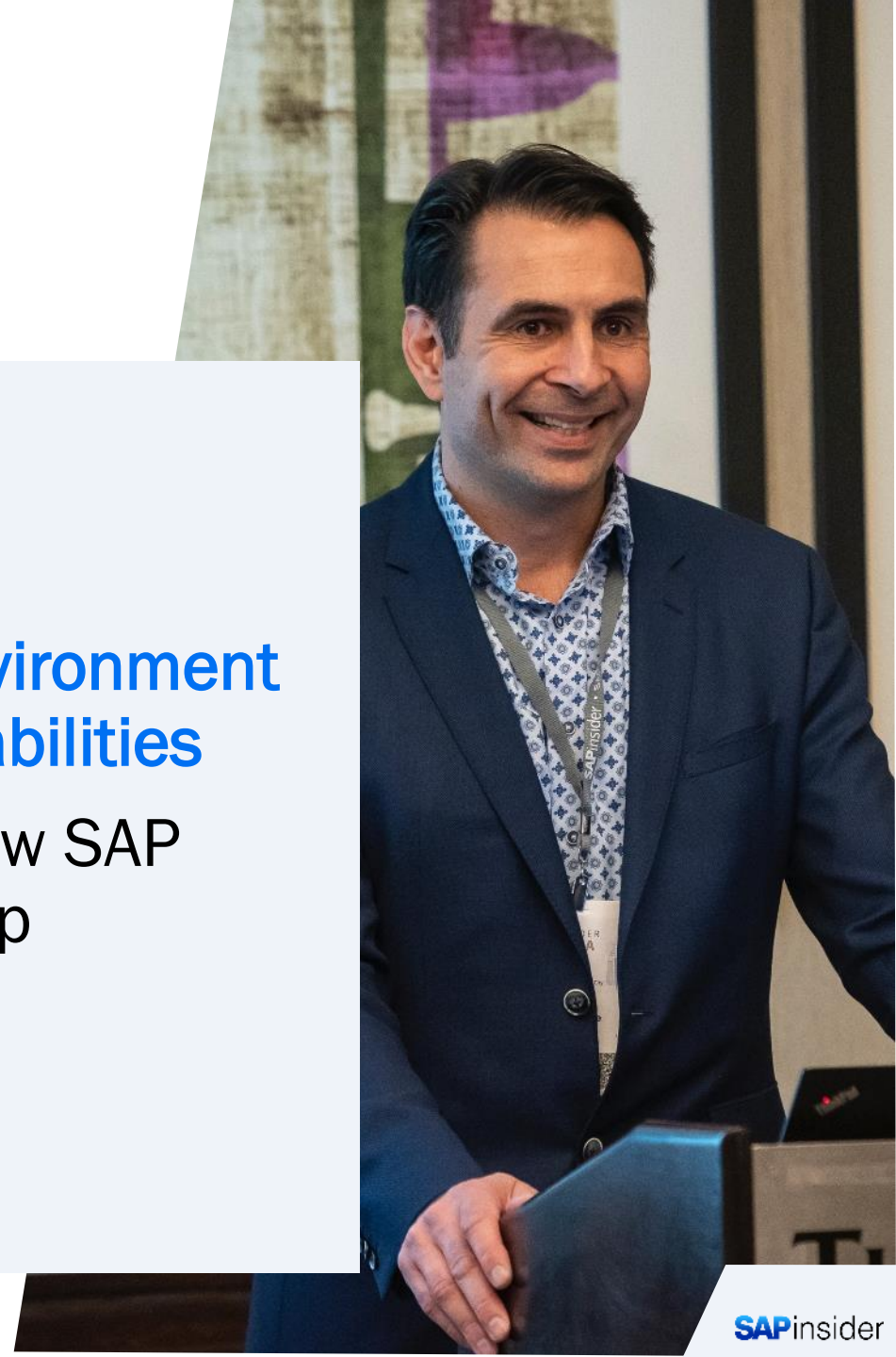
We are building foundational capabilities to **scale business AI**, e.g. **access to customer data**, new commercial models, **trustworthy AI**.



# Agenda

---

- SAP 2023 Update
- **Building a Sustainable ERP Environment Leveraging SAP S/4HANA Capabilities**
- Planning for the Future, and how SAP Enterprise Architecture can help
- Wrap Up





# ERP Challenges Today

## 1. BUSINESS CHANGE

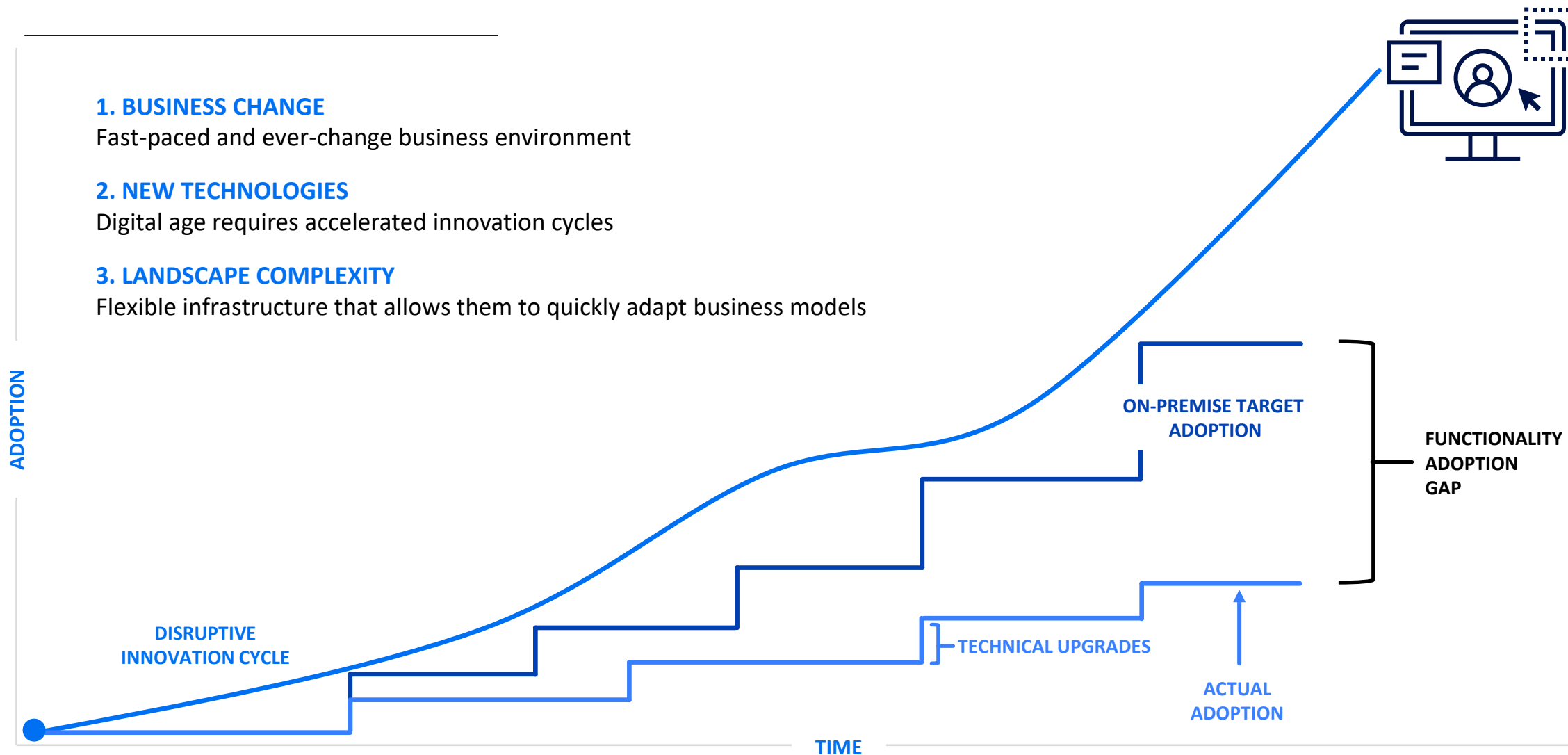
Fast-paced and ever-change business environment

## 2. NEW TECHNOLOGIES

Digital age requires accelerated innovation cycles

## 3. LANDSCAPE COMPLEXITY

Flexible infrastructure that allows them to quickly adapt business models



# What is Clean Core?

---



The “clean core” concept is a **mindset** and **philosophy** supported with governance and guidelines that lay the foundation for a flexible and future ready ERP.

## ...**agility**

Clean environments decrease time to value. Additional process requirements can be implemented faster and business models can adapt to short term challenges more easily.

## ...**Leverage latest innovations** i.e. to **stay current**.

Adaptation effort in the context of updates and upgrades is reduced. Cloud services can be integrated faster.

## ...**efficient and secure operations**

E.g. no costly maintenance for unused artefacts.

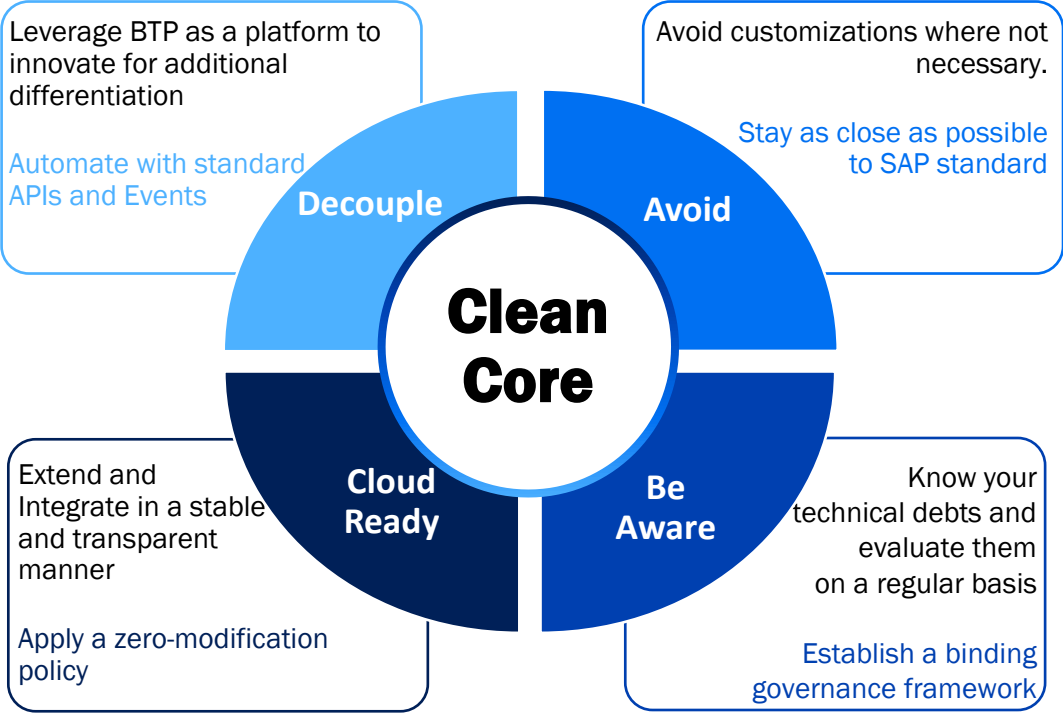
## ...**data to value**

Consistent data allows reliable forecasts and precise predictions.

# Clean Core Strategy



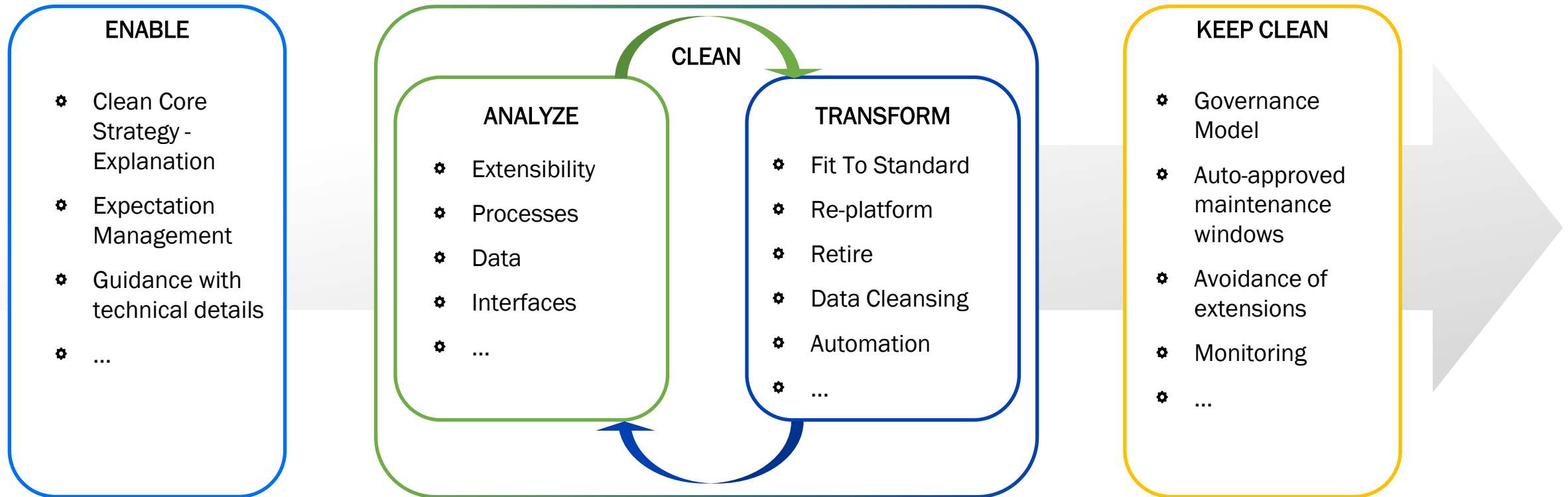
Dimensions



Guiding Principles

# Start the journey today

Start by **understanding** with **transparency**, on what to **rework** in order to continuously **monitor**

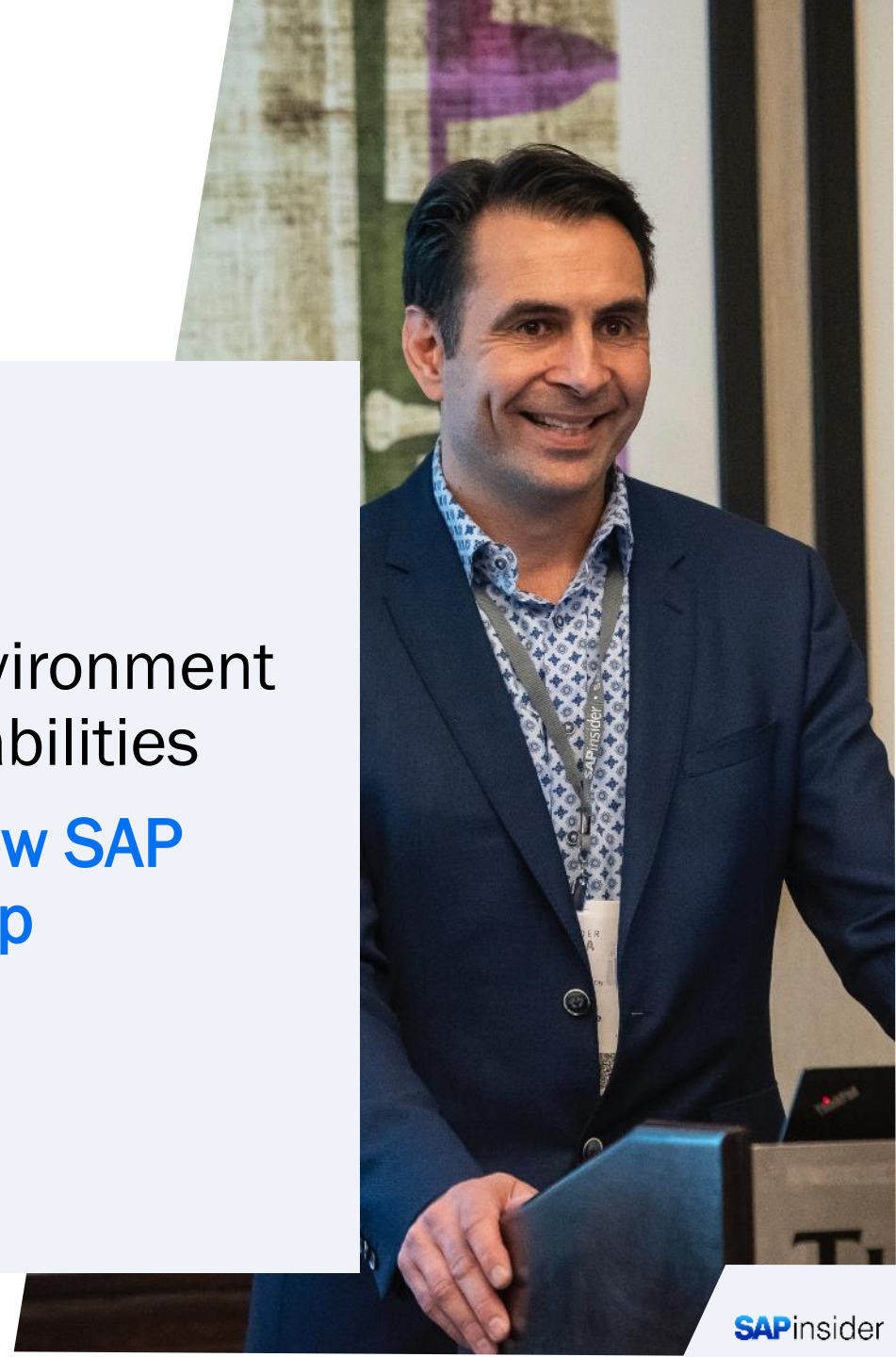




# Agenda

---

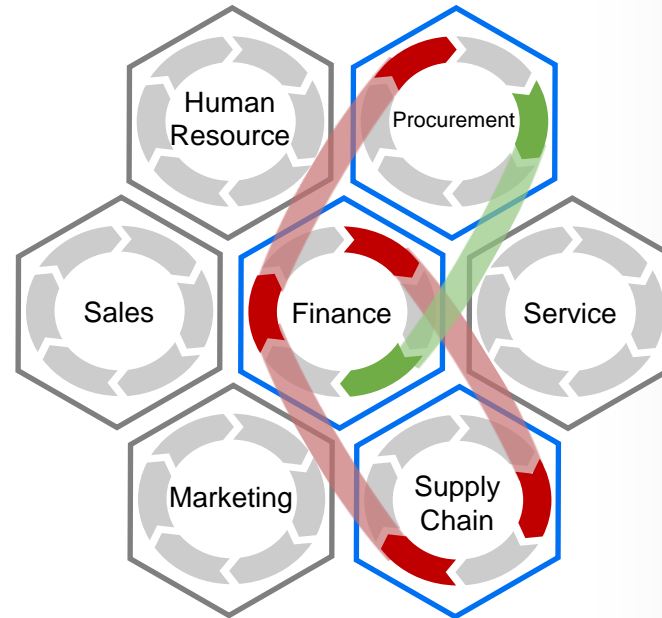
- SAP 2023 Update
- Building a Sustainable ERP Environment Leveraging SAP S/4HANA Capabilities
- **Planning for the Future, and how SAP Enterprise Architecture can help**
- Wrap Up



# Need for Business Transformation



## BUSINESS CAPABILITIES



## BUSINESS DRIVERS



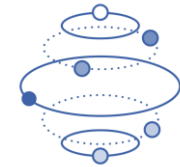
Remote workforce and distanced customer experience



Disrupted supply chains, and product demand



Spend efficiency and Cost optimization



Increasing business model disruption



Fast-changing environment and innovation (GenAI)



Maintain business viability and visibility (Real time insights)

TRIGGER EVENTS

ORGANIZATIONAL TRANSFORMATION

COST SAVINGS

LARGE SCALE IT TRANSFORMATION

MARKET EXPANSION OR COMPETITIVE DEVELOPMENT

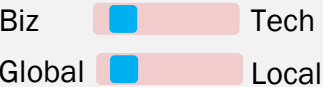
EXTERNAL FACTORS

M&A & SPIN OFF

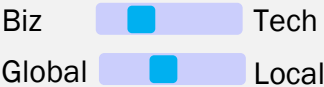
# Introducing the Transformation Team



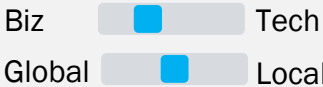
**ALFRED**  
Business Owner



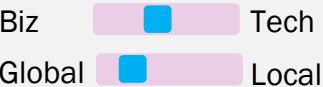
**BETHANY**  
Process Owner



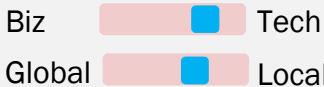
**CHASE**  
Process Consultant



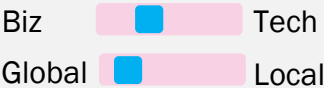
**DIANA**  
Enterprise Architect



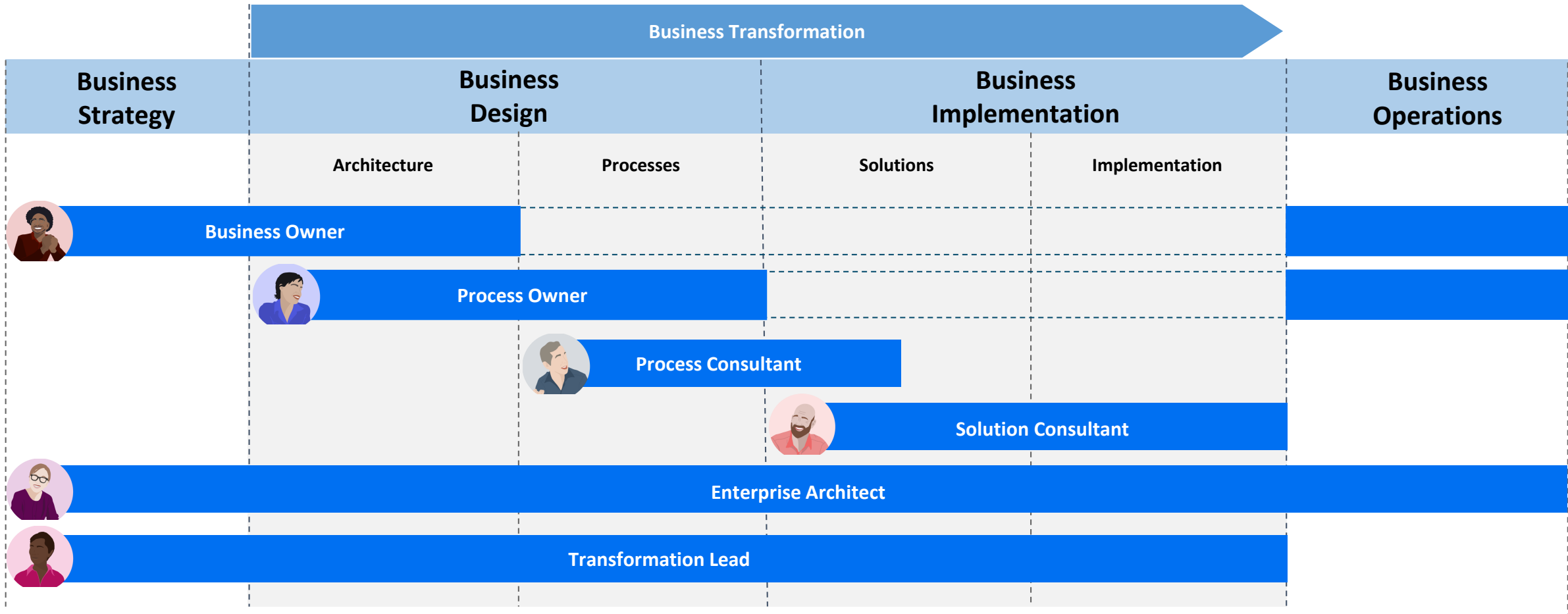
**ERIC**  
Solution Consultant



**FELICITY**  
Transformation Lead



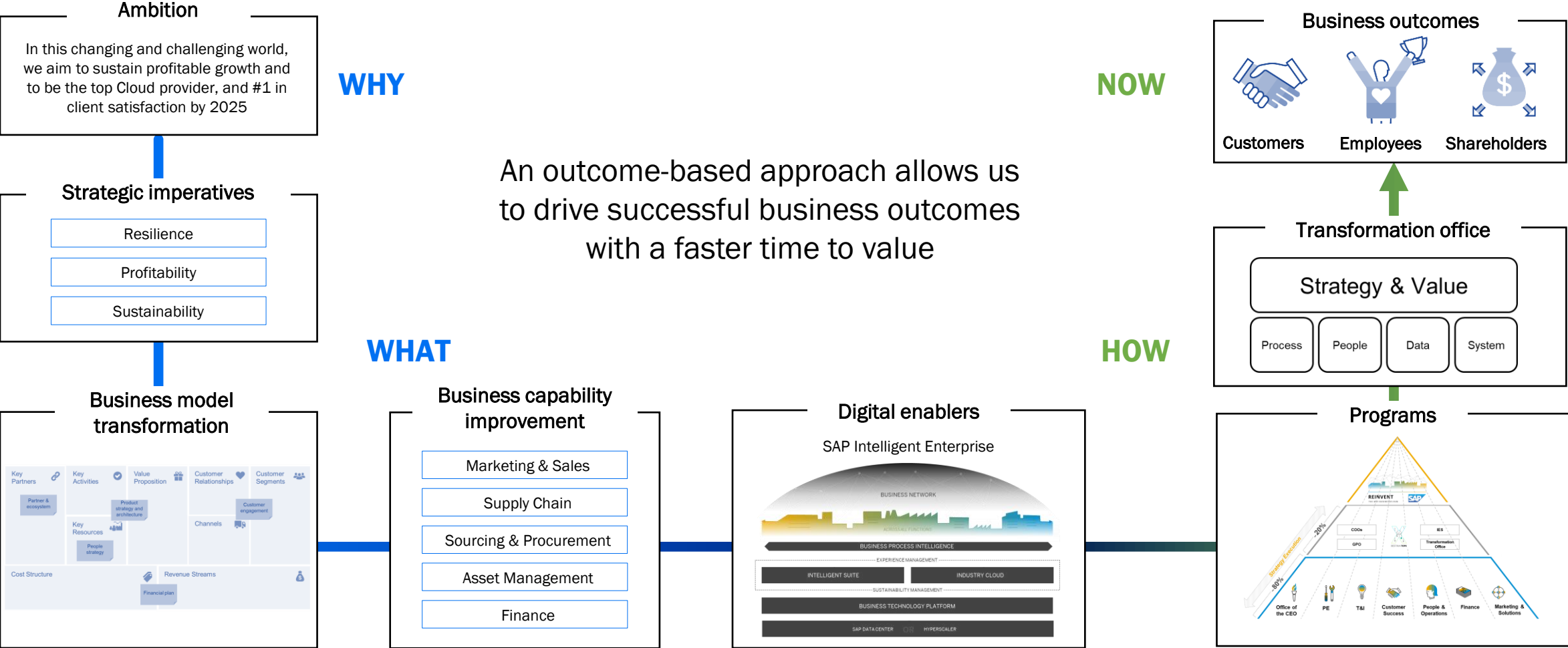
# Guiding any business transformation from Business Strategy to Operations





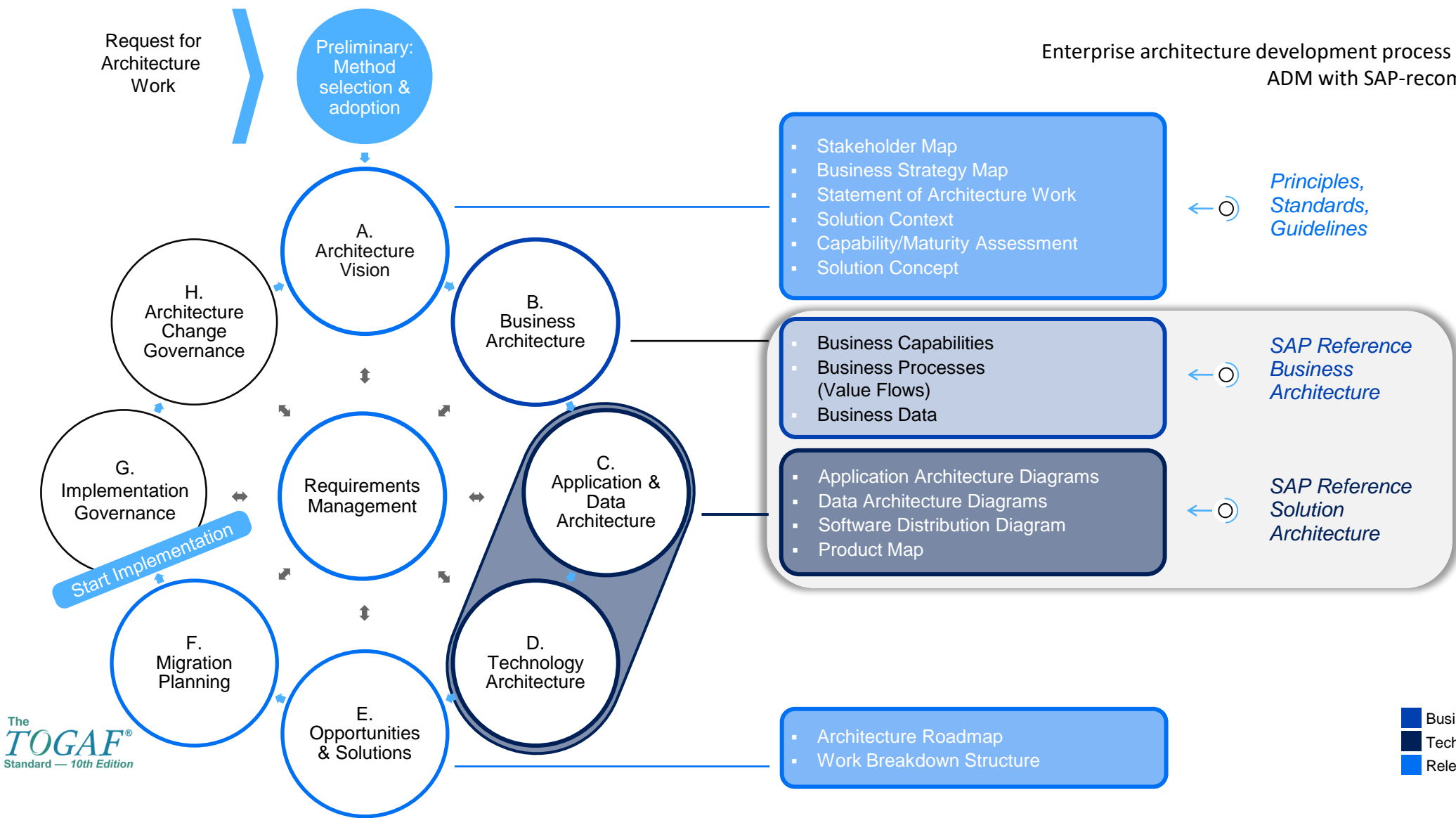
# Outcome-based Approach Enables Business Transformation

## The SAP Enterprise Architecture Approach



# SAP Enterprise Architecture Methodology

Enterprise architecture development process based on TOGAF® ADM with SAP-recommended artifacts

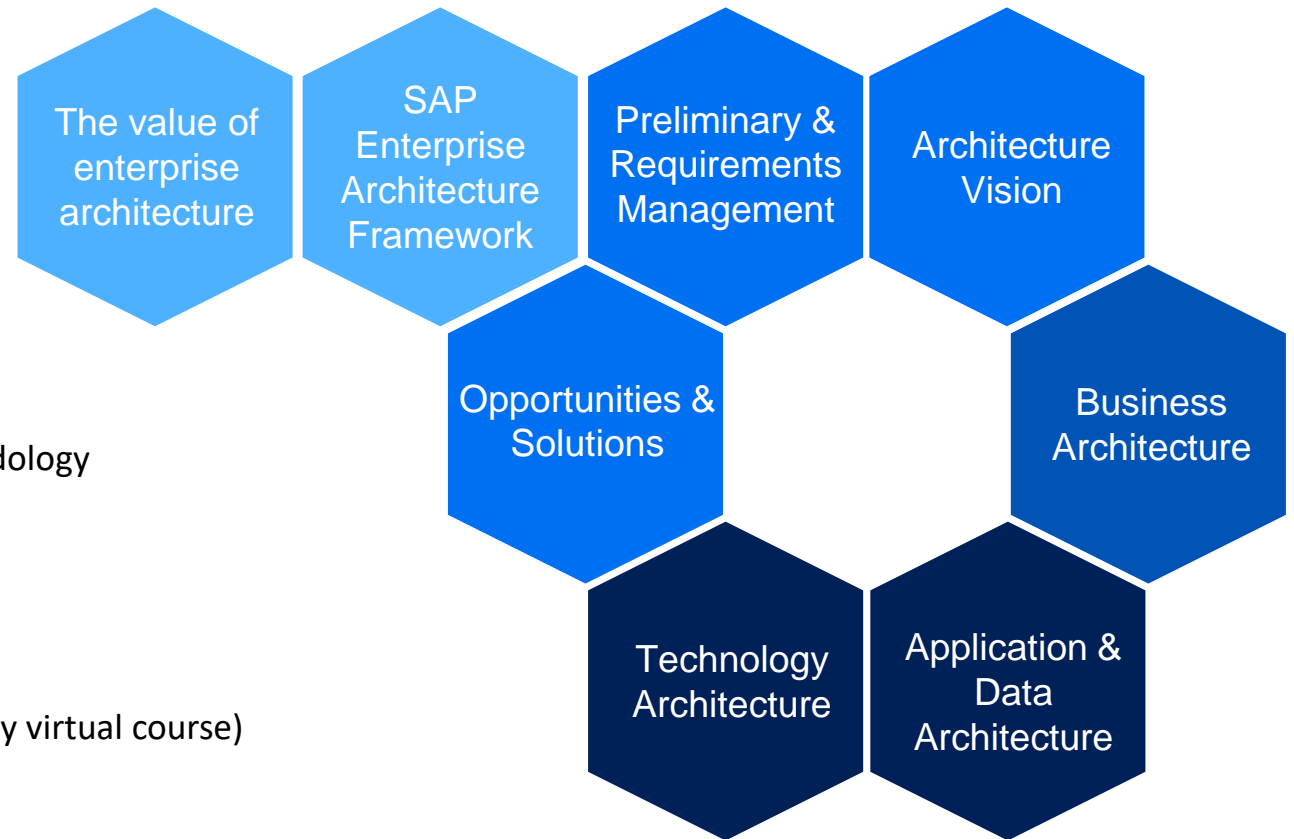


# New SAP Intelligent Enterprise Architecture Training (IEA10)

## Content highlights:

- Insights into SAP Reference Architecture content
- Guidance on how to apply the SAP Enterprise Architecture Methodology
- SAP Enterprise Architecture best practices
- Hands-on experience with and end-to-end case study from business strategy to implementation roadmap
- 5-day course (available since Jan 2023)
- Certification program incl. digital badge
- SAP Intelligent Enterprise Architecture Quick Starter planned (1-day virtual course)

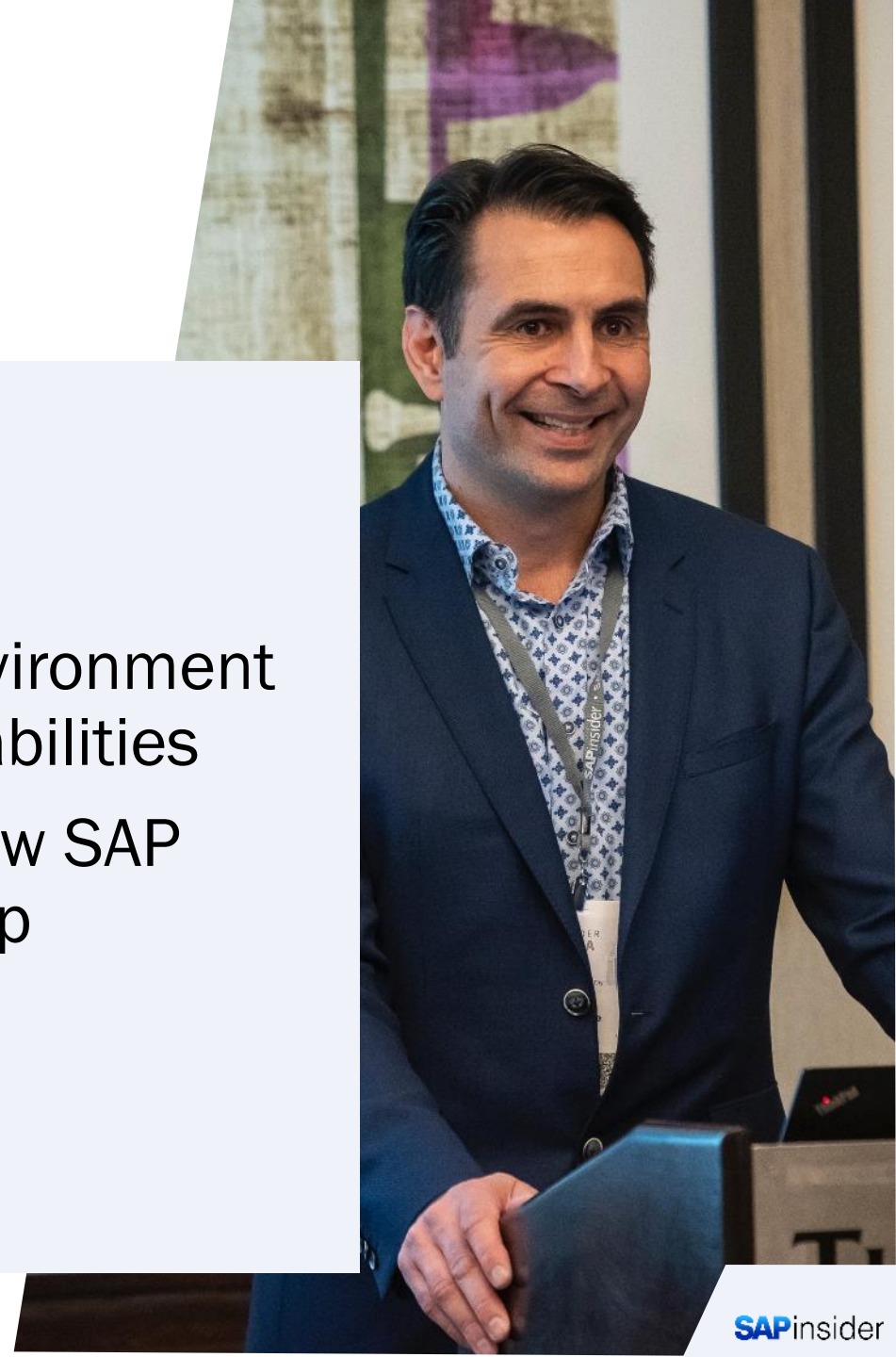
...Find out more on [SAP IEA10 Certification](#)



# Agenda

---

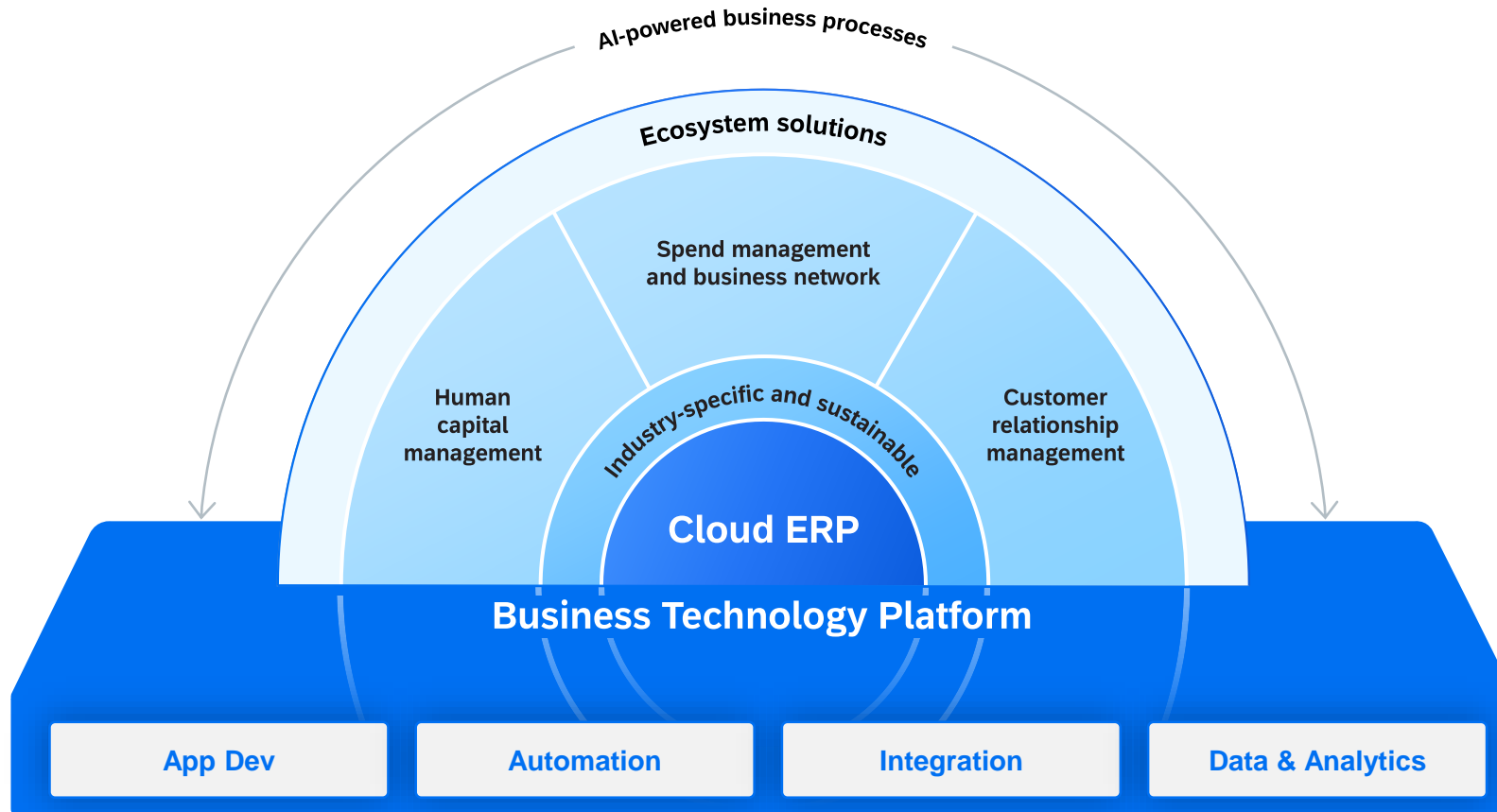
- SAP 2023 Update
- Building a Sustainable ERP Environment Leveraging SAP S/4HANA Capabilities
- Planning for the Future, and how SAP Enterprise Architecture can help
- Wrap Up





# Wrap up

Maximize Your Investment In SAP S/4HANA by adopting a holistic and forward-thinking approach to managing and evolving your ERP landscape. Build a modular and composable business architecture that focus on driving business outcomes with your core ERP at the centerfold.



# Where to Find More Information

---

- [SAP IEA10 Certification](#)
- [SAP Enterprise Architecture Community](#)
- [SAP Business AI](#)
- [What's New Viewer - SAP S/4HANA | SAP Help Portal](#)
- [New SAP S/4HANA Release & Maintenance Strategy | SAP News](#)

# Key Points to Take Home

---

## **Building Sustainability is Key:**

A sustainable ERP environment is crucial for long-term success. Focus on maintaining system health, optimizing performance, and implementing robust data management and governance practices.

## **Leverage SAP S/4HANA's Full Potential:**

Explore the enhanced user experience, integrations, extensions, and improved business processes offered by SAP S/4HANA. Maximize the platform's capabilities to drive efficiency and innovation.

## **Understand Enterprise Architecture Dimensions:**

Gain insights into the different dimensions of Enterprise Architecture (Business, Data, Application, and Technology) to align your SAP S/4HANA strategy with your organization's broader goals.

## **Plan for Continuous Improvement:**

Create a sustainable roadmap for ongoing enhancements and upgrades. Ensure that your ERP system evolves with your business needs and takes advantage of SAP's innovations over time.

## **Integration is Key to Success:**

Successful ERP implementation requires seamless integration with other systems and processes within your organization. Make integration a priority to unlock the full potential of SAP S/4HANA.

## **Data Governance is Non-Negotiable:**

Establish strong data governance practices to maintain data quality, accuracy, and security within your ERP system. Data is a critical asset that must be managed effectively.

# Thank you! Questions?

---



**Mark Filus**

Sr. Business Architect

Connect on  
LinkedIn



Please remember to complete  
your session evaluation.



# SAPinsider



## SAPinsider.org

PO Box 982Hampstead, NH 03841  
Copyright © 2023 Wellesley Information Services.  
All rights reserved.

SAP and other SAP products and services mentioned herein as well as their respective logos are trademarks or registered trademarks of SAP SE (or an SAP affiliate company) in Germany and other countries. All other product and service names mentioned are the trademarks of their respective companies. Wellesley Information Services is neither owned nor controlled by SAP SE.

---

SAPinsider comprises the largest and fastest growing SAP membership group worldwide, with more than 750,000 global members.

---