



SAP S/4HANA Vs. ECC 6.0

What's Different?

Lars Fasel, SAP SE

SAPinsider
2023



In This Session

- The SAP S/4HANA History So Far
- Principles of a Modern ERP System
- SAP S/4HANA Functional Changes
- SAP Readiness Check for SAP S/4HANA
- Extensibility and Clean Core

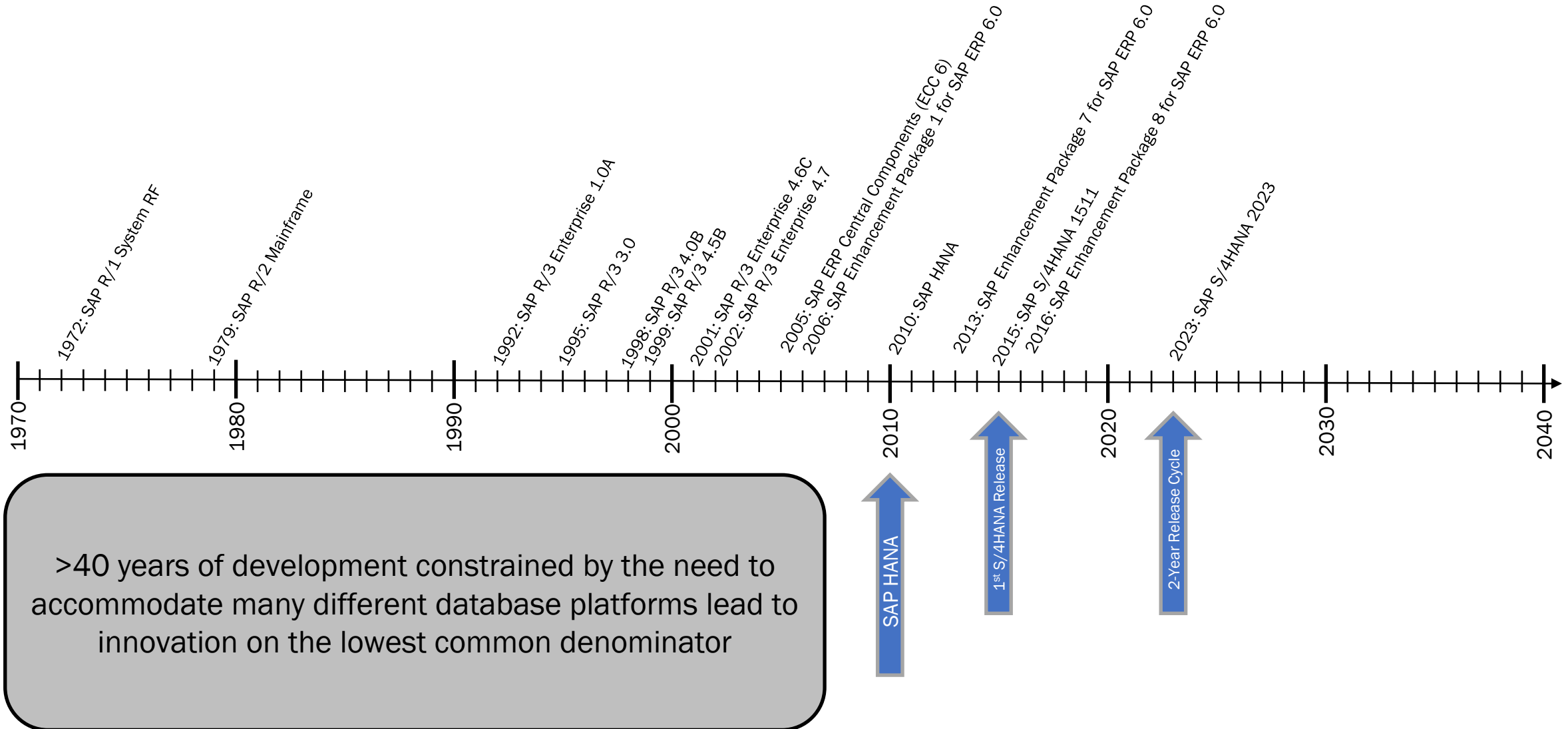
The SAP S/4HANA History So Far

- The Case for Change



The SAP S/4HANA History So Far

The Case for Change



Principles of a Modern ERP System

- Characteristics of a Modern ERP System
- SAP S/4HANA Technical Foundation
- Data Model Simplifications
- Evolving SaaS ERP from the Best Possible Basis



Principles of Modern ERP Solutions

Characteristics of a Modern ERP System



Even Higher Performance and Scalability



Consumer-grade User Experience



Extensible Architecture



Intelligent ERP Processes



Simplified and Standardized Implementation



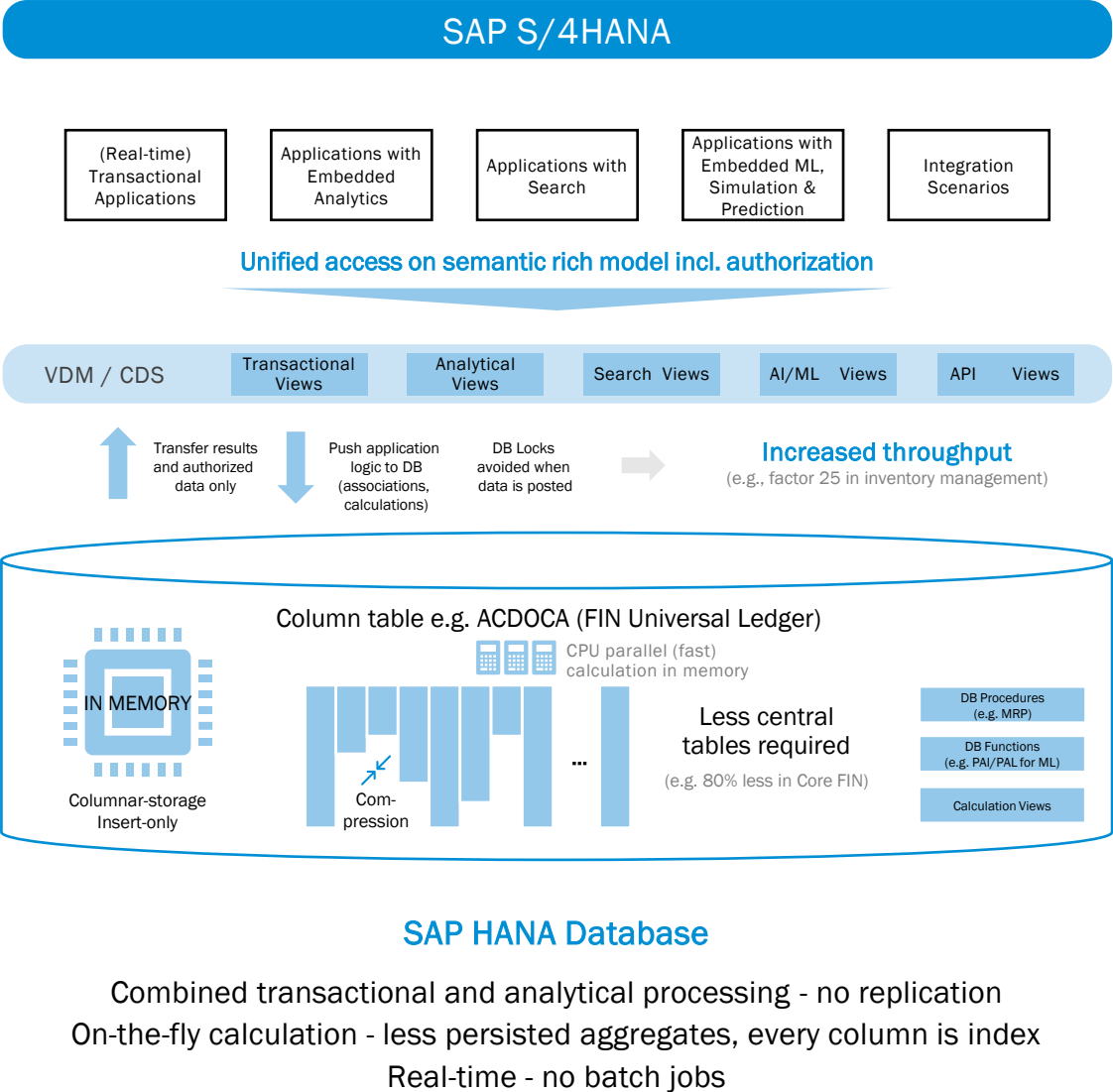
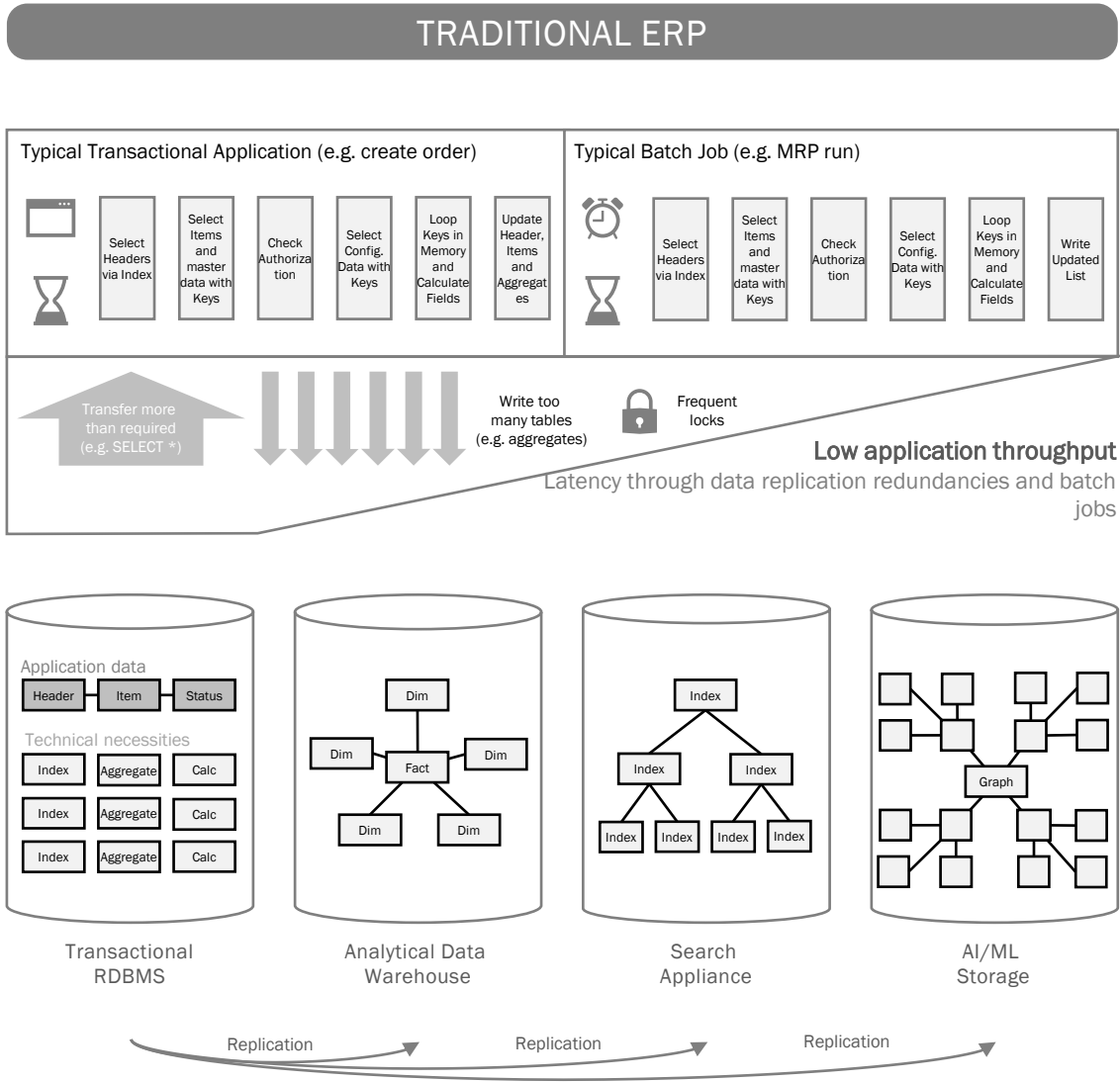
Cloud and On-Premise Deployment Models



Security, Privacy, Compliance, and Data Isolation

Principles of Modern ERP Solutions

SAP S/4HANA Technical Foundation



Principles of Modern ERP Solutions

Data Model Simplifications

SALES						
	Document				Item	
	Header					
Sales Order	VBAK		VBAP	>	VAKPA	VAPMA
Delivery	LIKP		LIPS	>	VLKPA	LKPMA
Billing Document	VBRK		VBUP	>	VRKPA	VRPMA
Status Info	VBUK		VBUP			
Conditions		KONV			VBOX	
Document Flow		VBFA				

	Document			Totals			Indices		
	Header	Item							
GL, AR, AP	BKPF	BSEG	>	GLT0	KNC1	KNC3	BSIS	BSAS	BSIK
			>	LFC1	LFC3		BSID	BSAD	BSAK
New GL		FAGLF LEXA	>	FAGLF LEXT			FAGL BSIS	FAGL BSAS	
CO	COBK	COEP		COSS	COSP				
AA	ANEK	ANEP	ANEA	ANLC	ANLP				
ML	MLHD...	MLIT...		MLCD...	MCLR...		BSIM	CKMI1	

SAP Business Suite®

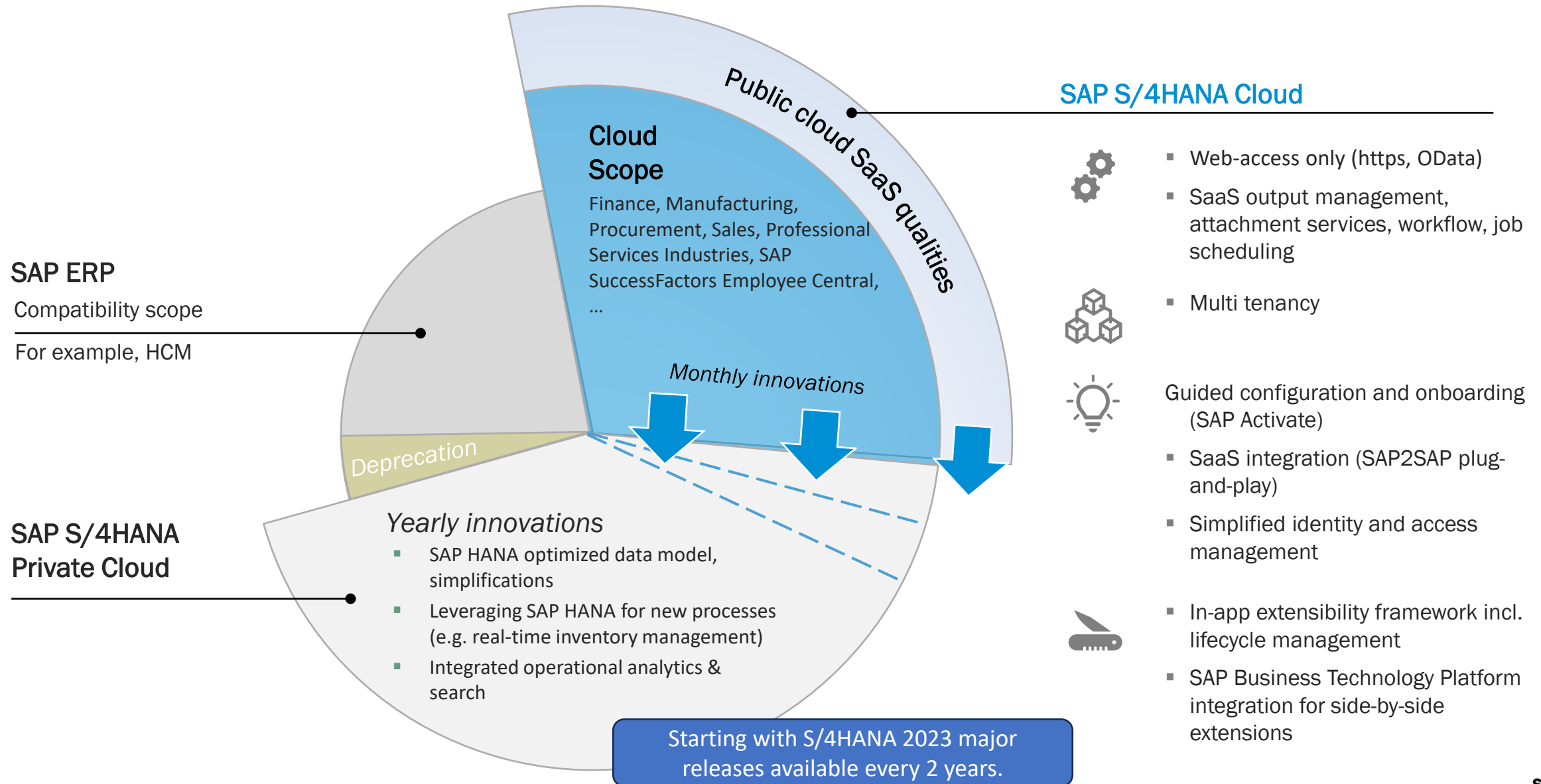
S/4HANA

MATERIAL VALUES						
Valuation in MM or Valuation ML						
Aggregates		History		ML Valuation		
Hybrid: Master Data with Valuated Stock						
MBEW	>	MBEWH	CKMLCR	MLPP	CKMLPP	CKMLPPWIP
EBEW	>	EBEWH	CKMLPP	MLCR	CKMLCR	CKMLKEPH
QBEW	>	QBEWH	MLHD	MLCRF	MLCD	CKMLMV004
OBEW	>	OBEWH	MLIT	MLKEPH	CKLMMV004	

MATERIAL QUANTITIES								
Aggregates								
Stock Aggregates			History					
Material Document			>	MSSA	MSSL	MSSQ	>	MSSAH
MKPF	MSEG	>	MSTE	MSTQ	MSTB	>	MSTEH	MSTQH
Inventory Movements			Hybrid: Master Data with Stock Aggregates				>	MARCH
			MCHB	MARC	MARD	MSKU	>	MSLBH
			MSKA	MKOL	MSPR	MSLB	>	MSKAH

Principles of Modern ERP Solutions

Evolving SaaS ERP from the Best Possible Basis



Virtual Data Model and CDS Views

- CDS and VDM as the technical foundation

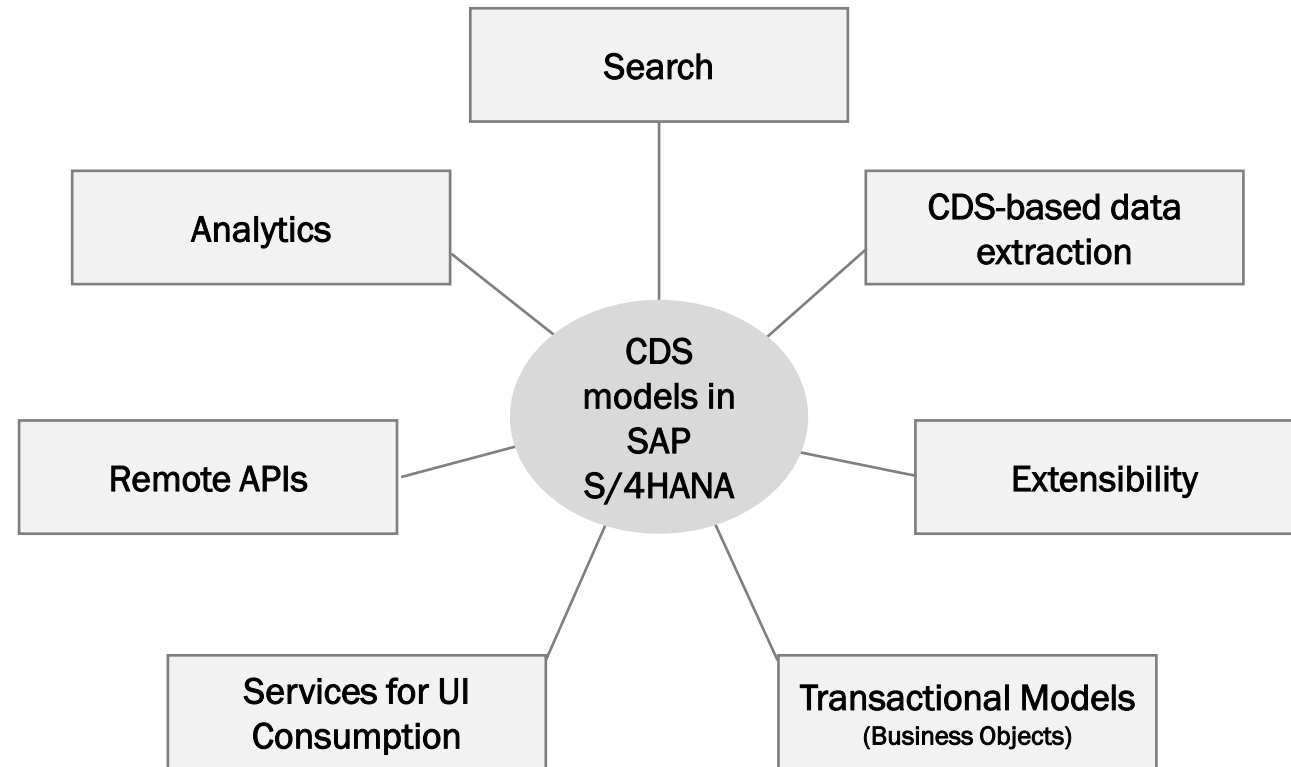


Virtual Data Model and CDS Views

CDS and VDM as the Technical Foundation

Virtual Data Model (VDM)

- Implemented via Core Data Services (CDS)
- **Active** SAP S/4HANA Core Entity/Relationship Model
- Unified semantic data model
- Database abstraction, uniform modeling, naming
- Reusable interfaces



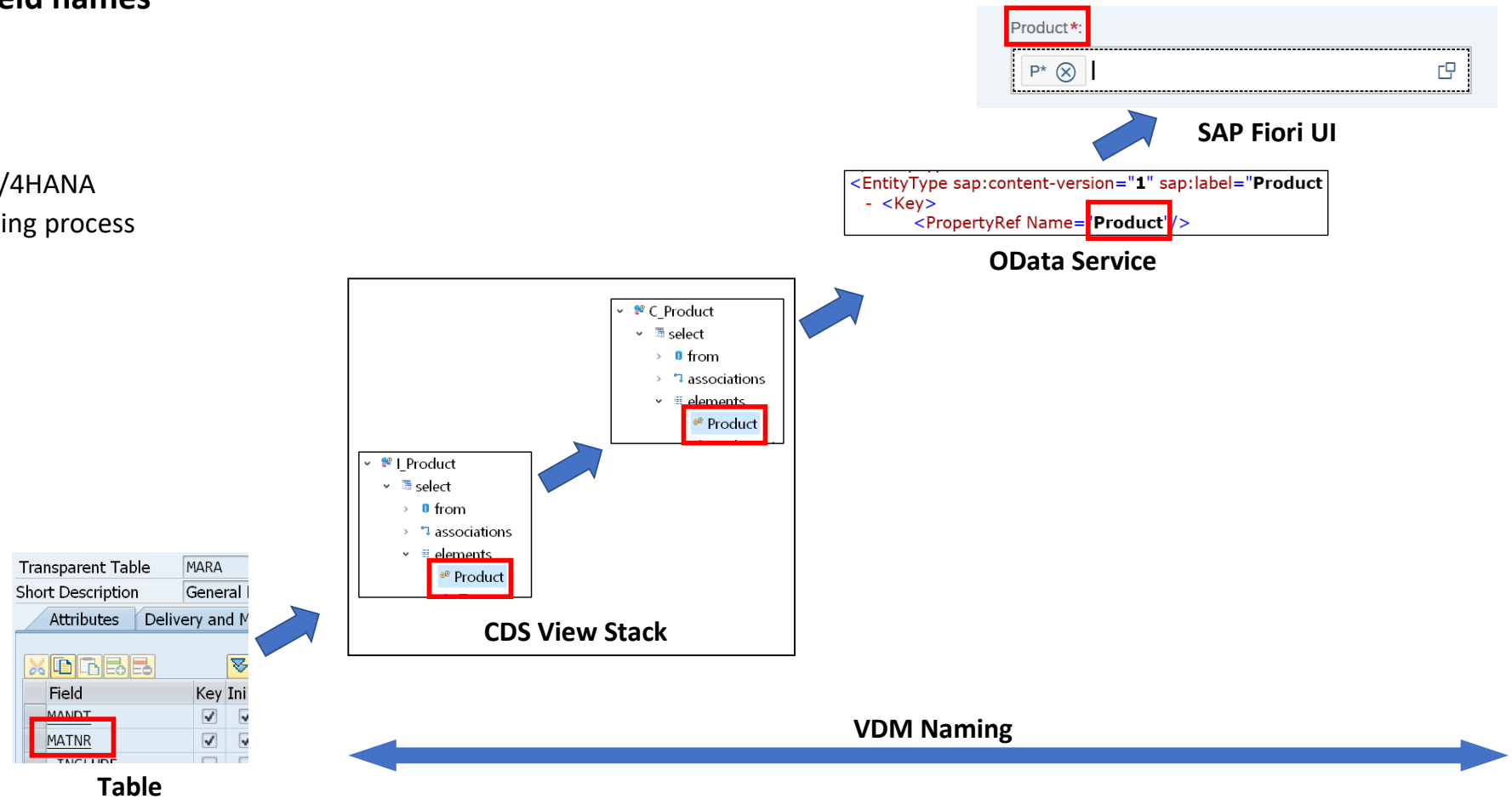
Note: VDM integrates and maps to ODM!

Virtual Data Model and CDS Views

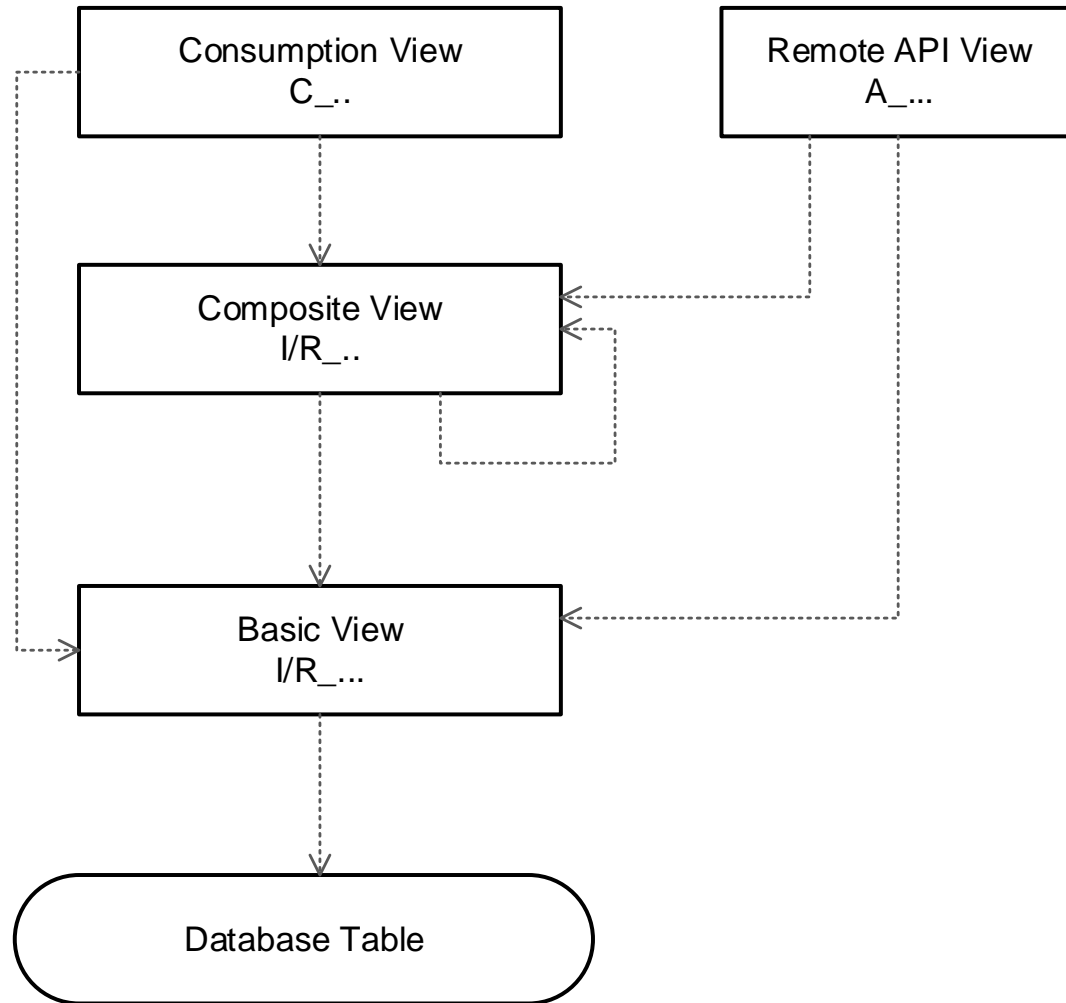
Field Names in Virtual Data Model

Focus on semantic meaningful field names

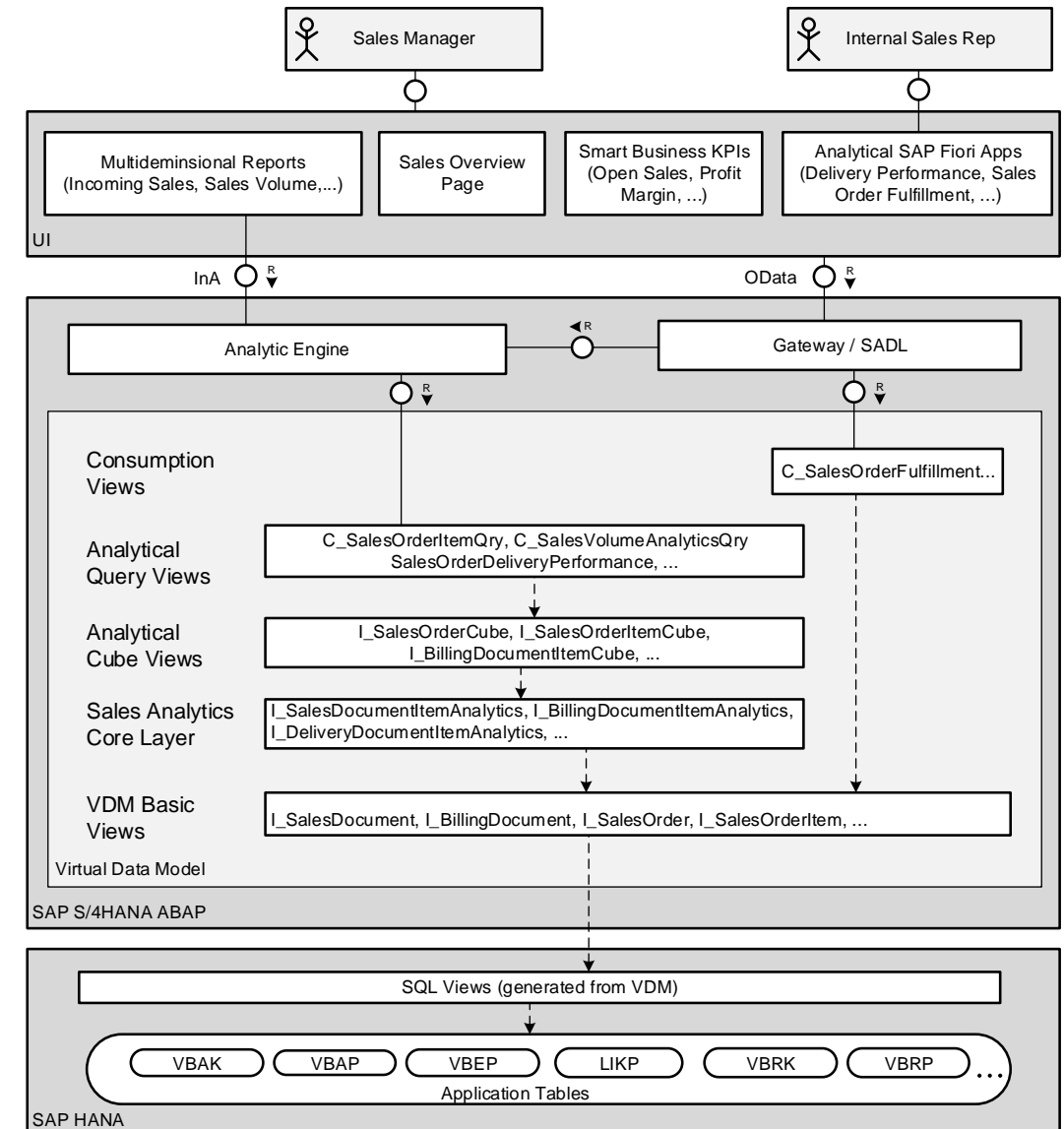
- Governance process ensures
 - Appropriate naming
 - Unique field names across SAP S/4HANA
(Important for analytics, supporting process consistency)

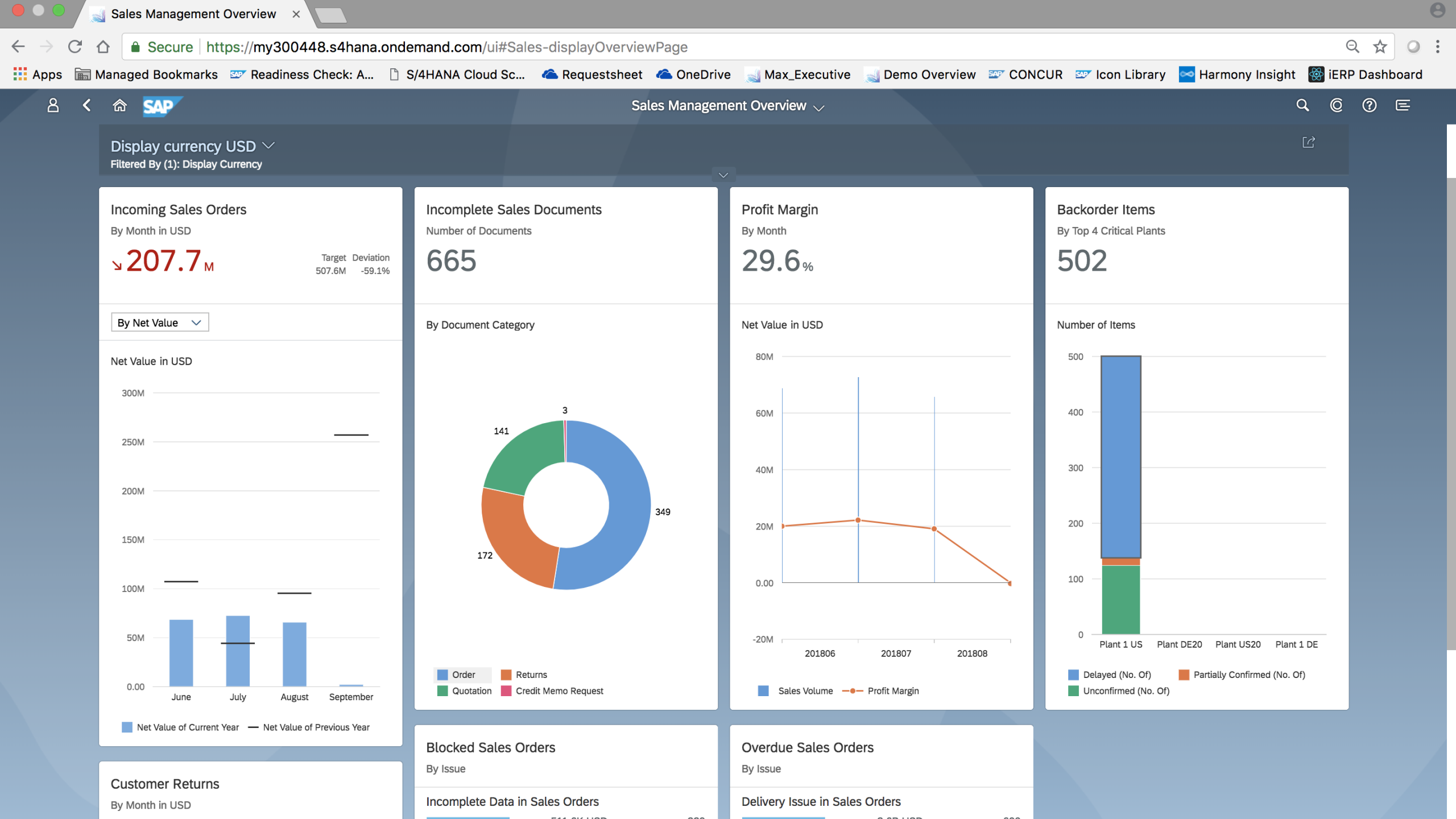


Virtual Data Model – View Layers



Example in SAP S/4HANA Sales





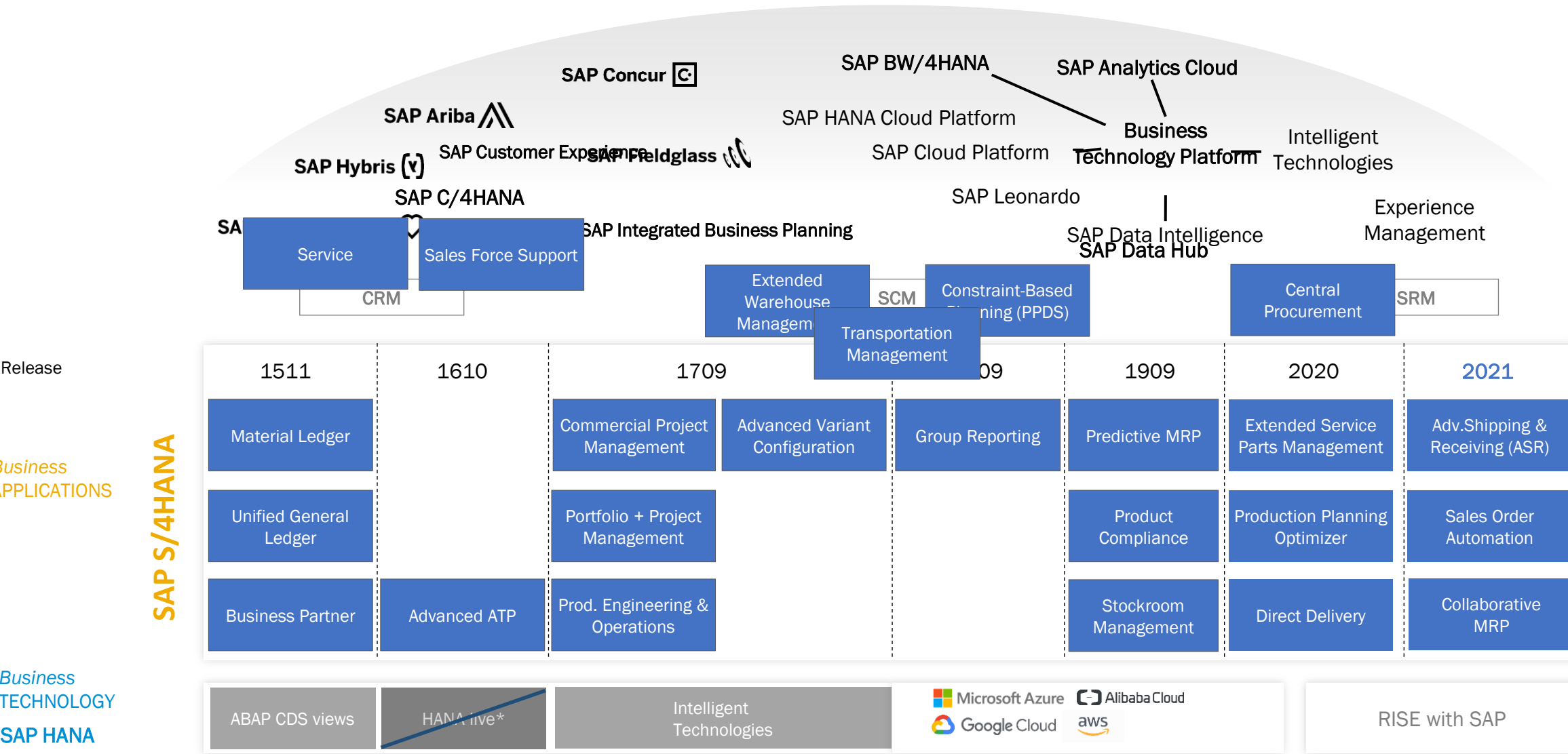
SAP S/4HANA Functional Changes

- The evolution of SAP S/4HANA: architecture
- SAP S/4HANA 2022 and beyond



SAP S/4HANA Functional Changes

The evolution of SAP S/4HANA: architecture



SAP S/4HANA Functional Changes

SAP S/4HANA 2022 and beyond

Labs Preview*

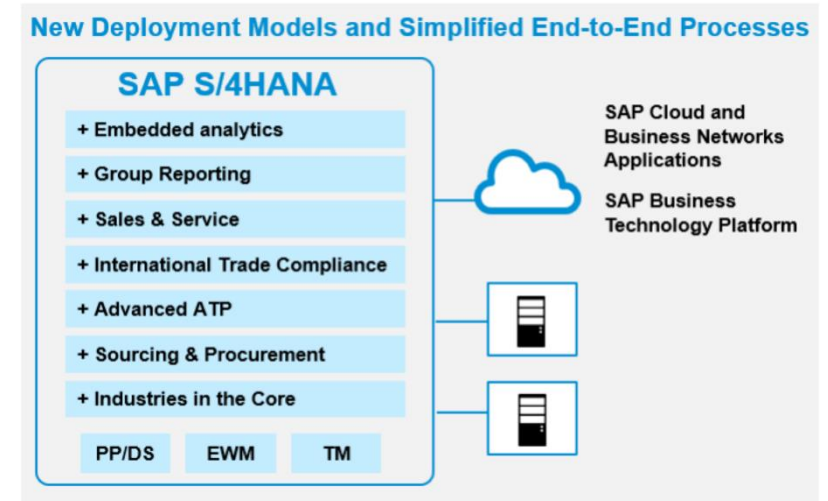
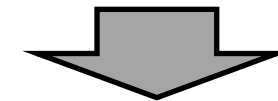
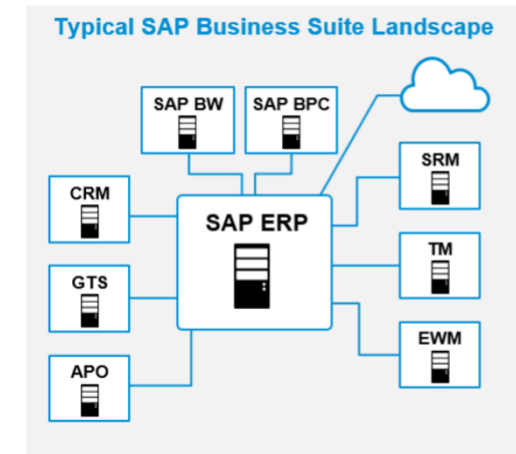
SAP S/4HANA

Release	2021	2022		2023*		2025*	2027*
Application	Adv. Shipping & Receiving	Adv. Intercompany Sales	Enh. Maintenance Scheduling Board	Capable-to-Promise (aATP)	Value Chain Analysis for Proc.	Enhanced Sustainability	tbd
	Sales Order Automation	Complex Services (Central Proc.)	Interaction Center (imp. for Utilities)	Asset-centric Service	Projects in Solution Order	Complex Assets	tbd
	Collaborative MRP	Supply-based Confirmation	HCM on SAP S/4HANA	Safety Data Sheet Authoring	Service Mgmt. for Utilities	Enh. Sales Order Scheduling	tbd
Technology	Rise with SAP	Embedded Steampunk		FPS Toggle Framework		Central Business Configuration	?

SAP S/4HANA Functional Changes

Deployment Options

- New Deployment Models
 - Allow embedding previously standalone solutions/capabilities
 - Allow simplified end-to-end processes
- Recommendations Regarding New Deployment Options
 - Not Mandatory
 - Not a suggestion from SAP how to run SAP applications in the future
 - Require a Proper Evaluation



SAP Readiness Check

- SAP Readiness Check for SAP S/4HANA

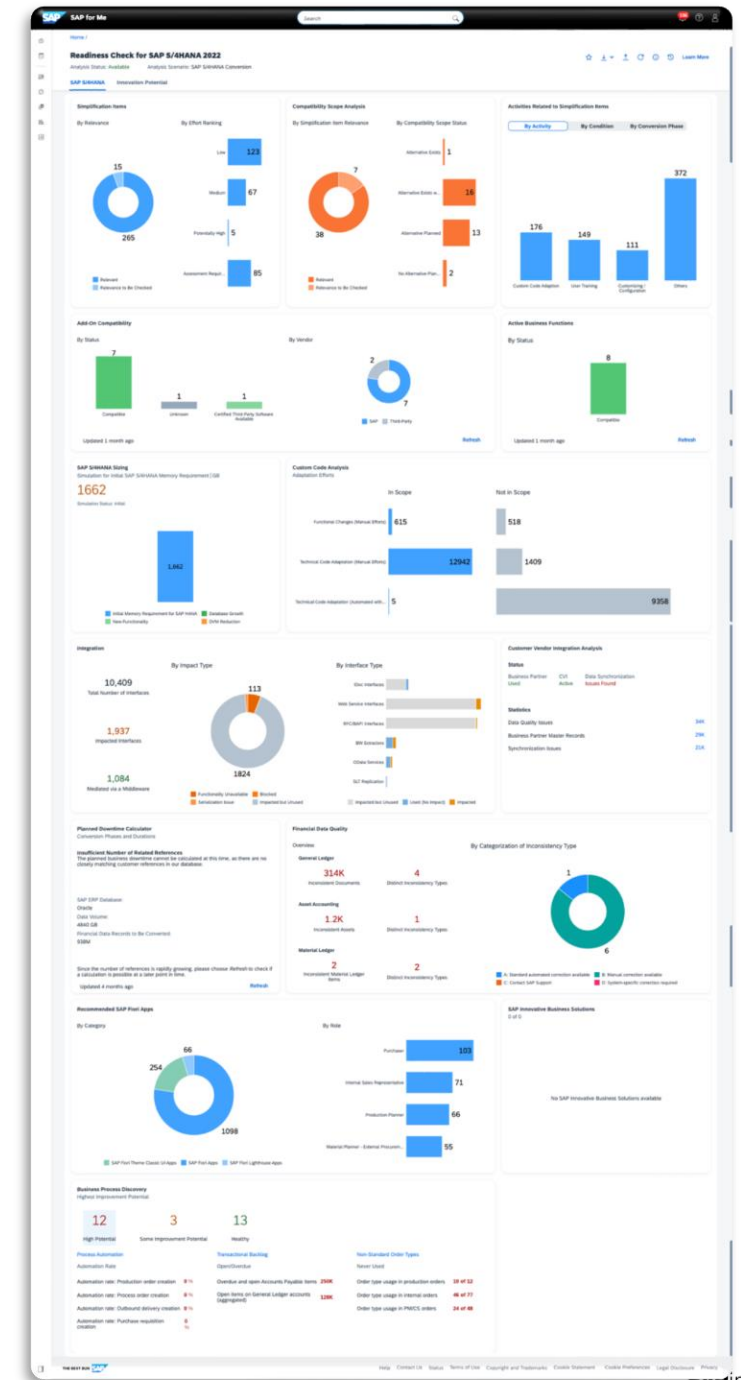


SAP S/4HANA Functional Changes

SAP Readiness Check for S/4HANA Conversion

ANALYSIS SCENARIOS

- Simplification Items
- Compatibility Scope Analysis
- Activities Related to Simplification Items
- Add-On Compatibility
- Active Business Functions
- SAP S/4HANA Sizing
- Custom Code Analysis
- Integration
- Customer Vendor Integration Analysis
- Planned Downtime Calculator
- Financial Data Quality
- Recommended SAP Fiori Apps
- SAP Innovative Business Solutions
- Business Process Discovery
- Innovation Potential

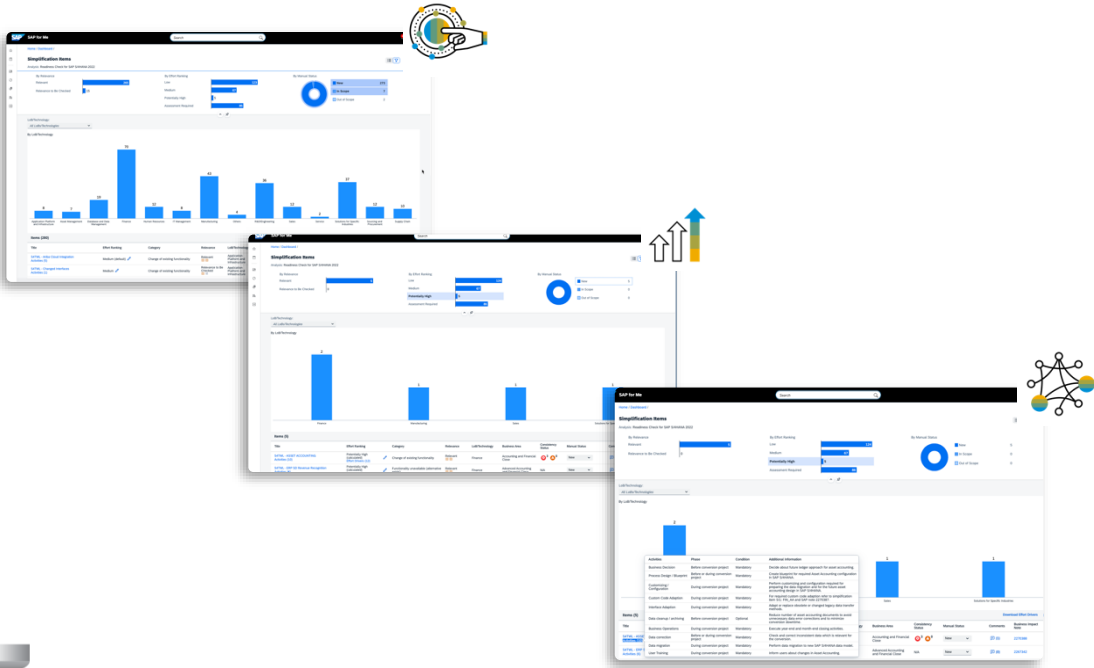
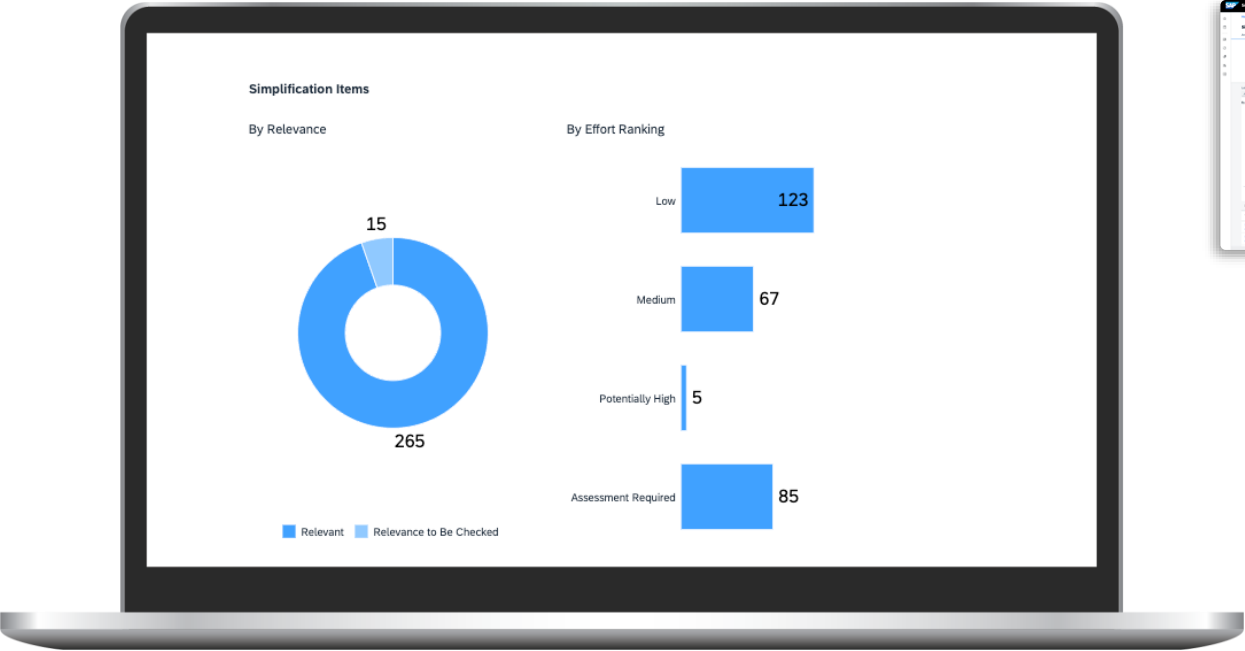


SAP S/4HANA Functional Changes

Simplification Items

For the transition from SAP ERP 6.0 to SAP S/4HANA, SAP provides information about the relevant changes that might have an impact, grouped by simplification items, from the simplification item catalog.

SAP Readiness Check provides the subset of the simplification items that may apply to your analyzed system.



Relevant Simplification Items

This section shows the simplification items that have been identified as relevant for your specific source system, sorted by the line of business/technologies. The check is primarily based on table contents and used transactions.



Effort Ranking

The effort ranking indicates an effort estimation for the corresponding simplification item from *Low* to *High* or highlights the requirement of an expert assessment.



Related Activities

Learn about the related activities, including when to address the item and whether it is optional, conditional, or mandatory. Identifying the activities belonging to a simplification item assists in constructing a high-level project plan.

SAP S/4HANA Functional Changes

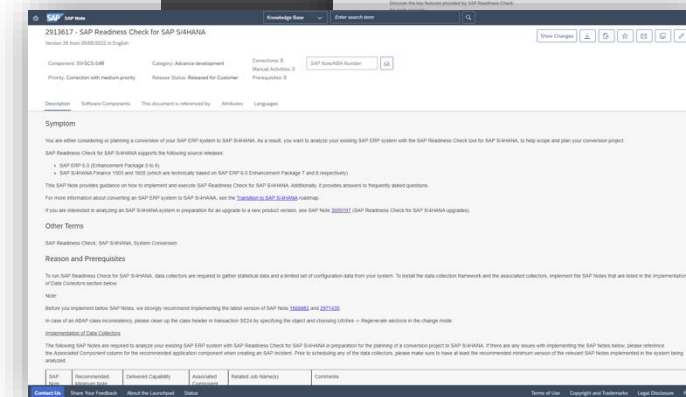
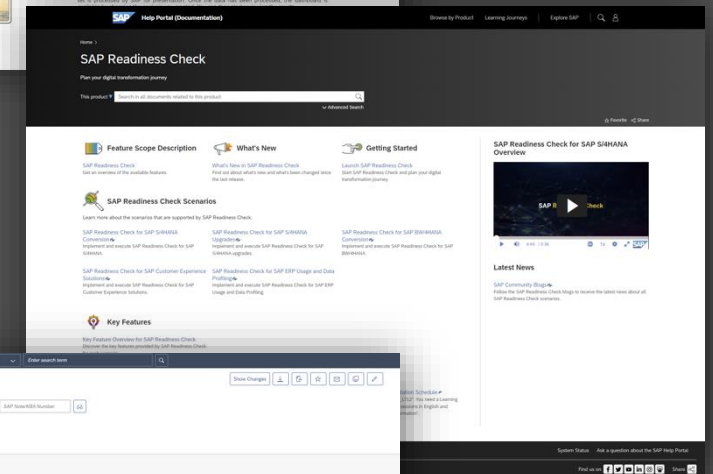
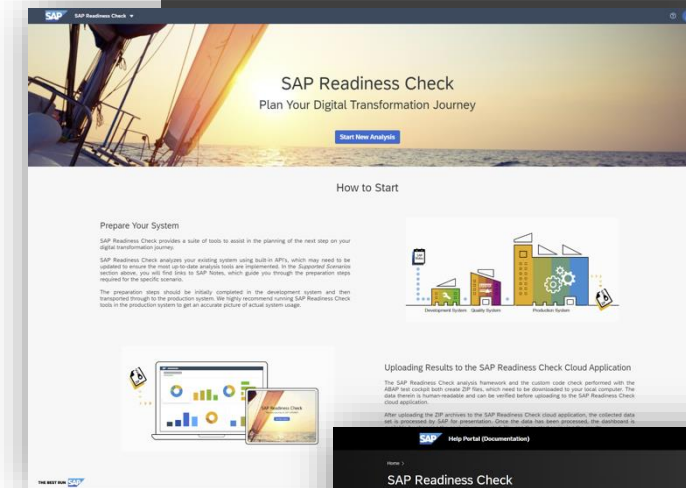
Resources and Links

Landing Pages

- [SAP Readiness Check on SAP for Me](#)
- [SAP Help Portal | SAP Readiness Check Page](#)
- [SAP Community | Topics | SAP Readiness Check](#)

Central Guidance Notes (Scenario Specific)

- [SAP Note 2913617 - SAP Readiness Check for SAP S/4HANA](#)
- [SAP Note 3059197 - SAP Readiness Check for SAP S/4HANA upgrades](#)
- [SAP Note 3061594 - SAP Readiness Check for SAP BW/4HANA](#)
- [SAP Note 3112362 - SAP Readiness Check for SAP ERP Usage and Data Profiling](#)
- [SAP Note 3123220 - SAP Readiness Check for SAP Customer Experience solutions](#)
- [SAP Note 3193560 - SAP Readiness Check for SAP SuccessFactors Solutions](#)
- [SAP Note 3236443 - SAP Readiness Check for SAP Cloud ALM](#)
- [SAP Note 3352301 – SAP Readiness Check for SAP Datasphere BW bridge - Central Note](#)



Extensibility and Clean Core

- What does “Clean Core” mean?
- Clean Core Dimensions
- SAP S/4HANA Extensibility Options



Benefits of Clean Core

A clean core allows to adapt the system to changing business requirements and to adopt new capabilities while ensuring permanent traceability in all areas of the core. **It provides...**

...agility

Clean environments decrease time to value. Additional process requirements can be implemented faster and business models can adapt to short term challenges more easily.

...Leverage latest innovations i.e. to **stay current**.

Adaptation effort in the context of updates and upgrades is reduced. Cloud services can be integrated faster.

...efficient and secure operations

E.g. no costly maintenance for unused artefacts

...data to value

Consistent data allows reliable forecasts and precise predictions.

What is Clean Core?

The “clean core” concept is a mindset and philosophy supported with governance and guidelines that lay the foundation for a flexible and future ready ERP

It is a modern approach to extend functionality in a stable, upgrade safe and transparent manner, along with a separate platform to innovate for additional differentiation.

A clean core allows faster software deployment as well as easier adoption of both SAP innovations and the regulatory changes to software.

It provides new ways to address business needs while avoiding excess technical debt, thus preparing organizations to maximize strategic benefits and limit the cost of transformation.

Extensibility and Clean Core

Clean Core Dimensions

Extensions

- Upgrade Stable
- Actively Used
- Well documented
- Developed based on Best Practices
- Follows Quality standards
- No duplication of standard functionality

Integrations

- Upgrade Stable
- Monitoring capability
- Robust error resolution
- Actively used
- Well documented
- Based on standard APIs (e.g. OData and SOAP)
- Event-driven

Data

- Accurate
- Complete
- Consistent
- Timely i.e. available and accessible
- Unique
- Valid
- Relevant i.e. used
- Optimized disk consumption
- Data lifecycle management

Processes

- Consistent
- Efficient
- Leverages standard best Practices for E2E business processes
- Transparency on each business process i.e. process flow and e.g. decision points known

Operations

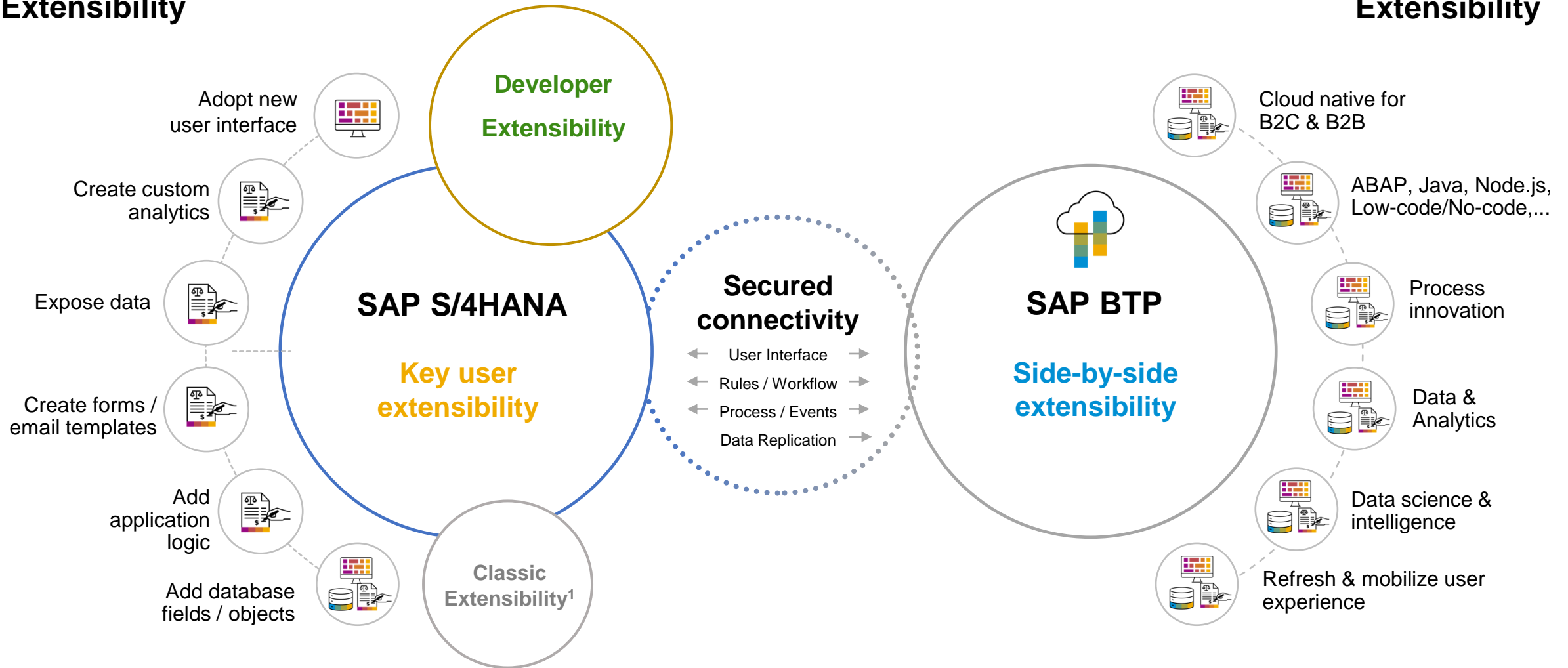
Day-to-day operations are planned and executed regularly to maintain alignment with the above-mentioned guidelines

Extensibility and Clean Core

SAP S/4HANA Extensibility Options

On-stack
Extensibility

Side-by-side
Extensibility



¹ SAP S/4HANA on premise and PCE only

Thank you! Questions?

Lars Fasel, SAP

lars.fasel@sap.com

Please remember to complete
your session evaluation.

SAPinsider



SAPinsider.org

PO Box 982Hampstead, NH 03841
Copyright © 2023 Wellesley Information Services.
All rights reserved.

SAP and other SAP products and services mentioned herein as well as their respective logos are trademarks or registered trademarks of SAP SE (or an SAP affiliate company) in Germany and other countries. All other product and service names mentioned are the trademarks of their respective companies. Wellesley Information Services is neither owned nor controlled by SAP SE.

SAPinsider comprises the largest and fastest growing SAP membership group worldwide, with more than 750,000 global members.
