

Pre-Conference: Making the Case for Your Identity Access Governance and GRC Solutions

Vishal Verma | vishal.verma@sap.com
Fiata, Gabriele | gabriele.fiata@sap.com
Swetta Singh | swetta.singh@sap.com
Chris Radkowski | chris.radkowski@sap.com
James Chiu | j.chiu@sap.com

SAPinsider
Las Vegas

2023

SAPinsider

Attend this session to come away with practical tips on how to create a business case for the Identity Access Governance and GRC solutions your company needs.

About this Document

- The furnishing of this document is subject to contract and shall not be construed as an offer or as constituting a binding agreement on the part of SAP to enter into any relationship. SAP provides this document as a guide to facilitate discussions around licensing SAP software. This document cannot be attached as an exhibit to contracts as it is a working document.
- This document outlines our general product direction and should not be relied on in making a purchase or implementation decision. This document is not subject to your license agreement or any other agreement with SAP. SAP has no obligation to pursue any course of business outlined in this document or to develop or to release any functionality mentioned in this document. This document and SAP's strategy and possible future developments are subject to change and may be changed by SAP at any time for any reason without notice.
- The contents of this document shall remain the confidential property of SAP and may not be communicated to any other party without the prior written approval of SAP. This document must not be reproduced in whole or in part except with the prior written consent of SAP and then only on condition that SAP's and any other copyright notices are included in such reproduction. No information as to the contents or subject matter of this document shall be given or communicated in any manner whatsoever to any third party without the prior written consent of SAP.

Agenda

How to create a business case for the Identity Access Governance and GRC solutions your company needs.

- What's Happening in Access Governance

- Building the business case (Part 1)

15 min Break

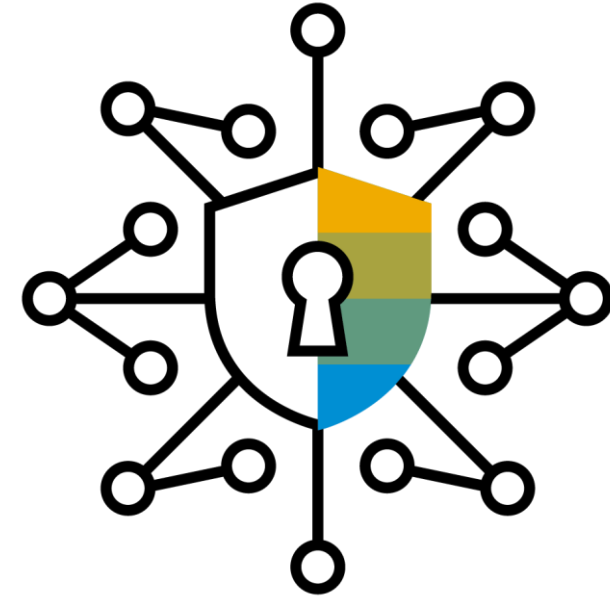
- What's Happening in Cybersecurity

- Building the business case (Part 2)

15 min Break

- Overview of SAP Financial Compliance Management

- Q&A

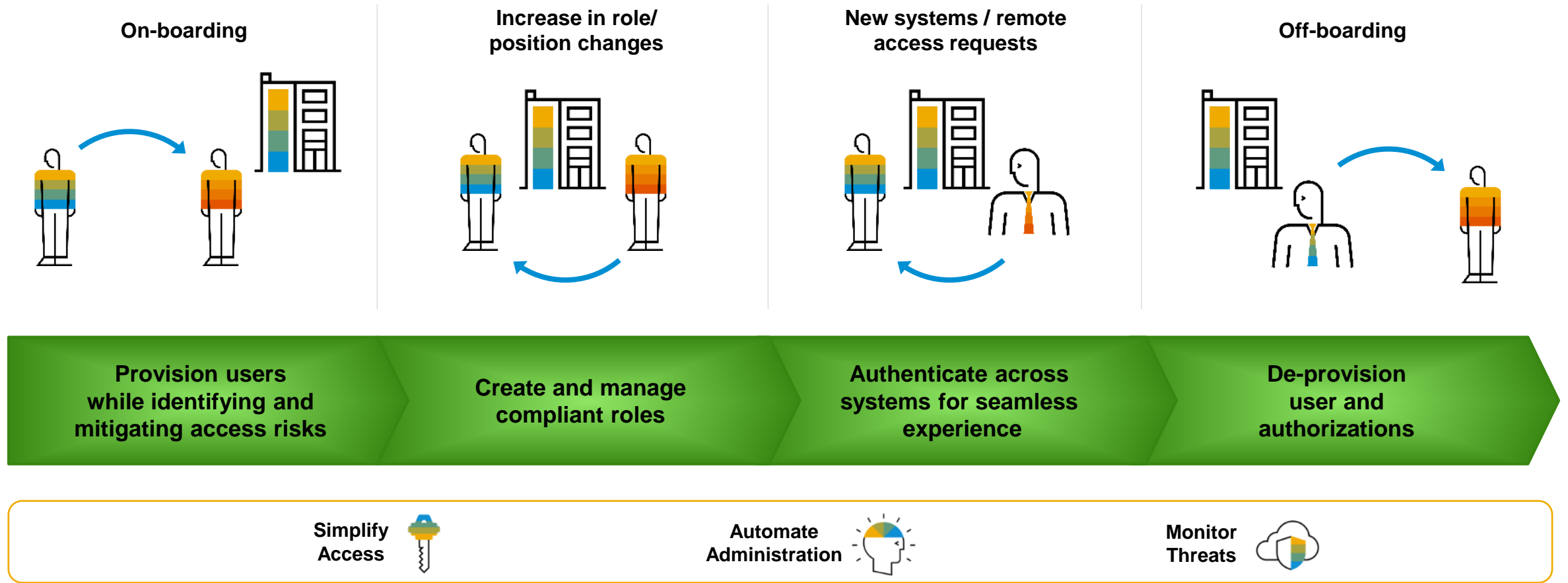


What's Happening in **Access Governance** & **Cybersecurity**



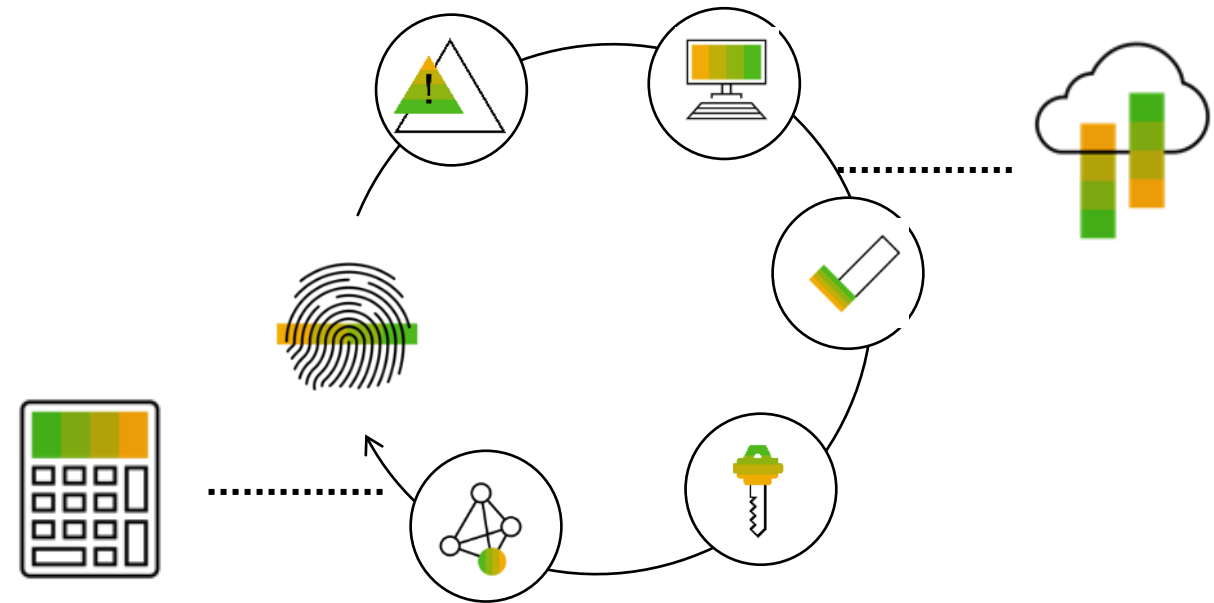
Overview – Identity Lifecycle Management

Automated, end-to-end identity lifecycle management for your employees and contingent workforce



Why is managing access so difficult?

- Increasing risk of fraud, loss from access, data misuse
- Remote work environments, virtual platforms requiring access to systems from non-traditional locations
- Increasing number and complexity of enterprise applications (including cloud) and different types of authorization models
- Key requirement for many regulations
- Manual and fragmented administrative processes
- Lack of visibility into user access and access risk



Access governance – critical elements

Ensure right access at right time to right person

- Enable business users to perform needed functions
- Support a global, remote workforce

Meet regulatory needs

- Analyze access and establish required control
- Simplify the process of getting the right access

Optimize roles to ensure security, privacy, business functionality, and ease of maintenance

Manage privileged access

Provide transparent auditability of who got what, when, and why



Access Governance

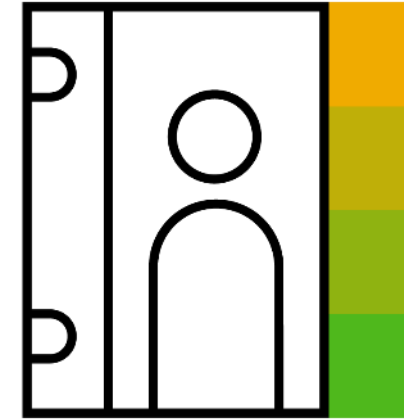
Digital identity concept

Definition

- Digital identity is the representation of an entity supported via systems and services.
- Your digital identity is what defines your relationship with the apps, devices, and services you need to be productive.
- Digital identity capabilities are what make the user experience the most friction free and seamless.

Managing digital identities

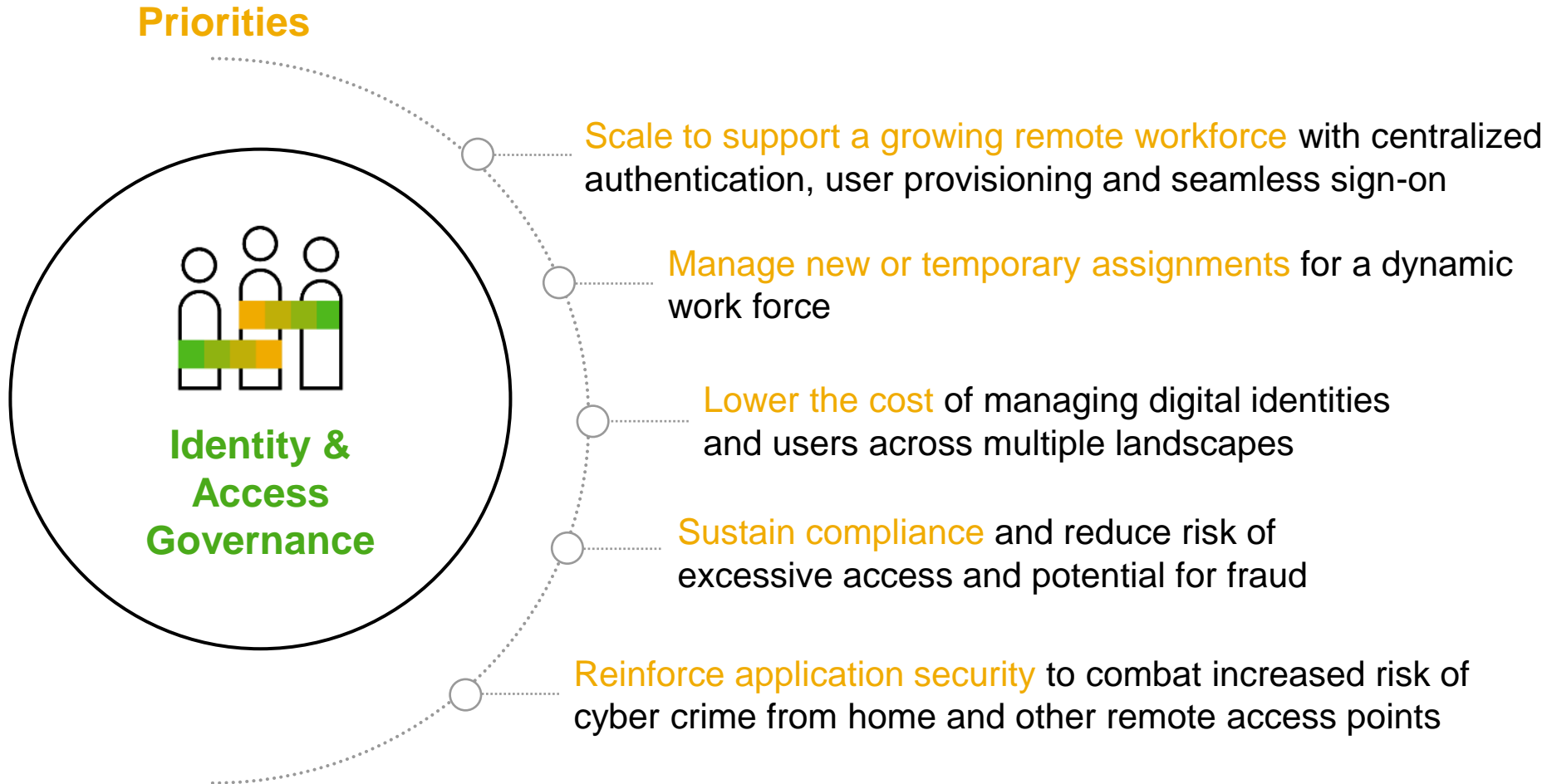
- User experience drives success of business and applications.
- Digital businesses are increasingly interconnected – users, devices, applications.
- Digital transformation is driving identity and access management (IAM) technologies to deliver greater automation and ease of use.



Challenges and Opportunities Driving the Transformation Access Governance



Identity and Access Governance Focus Areas



Key Focus Areas



Information Security



Remote Working



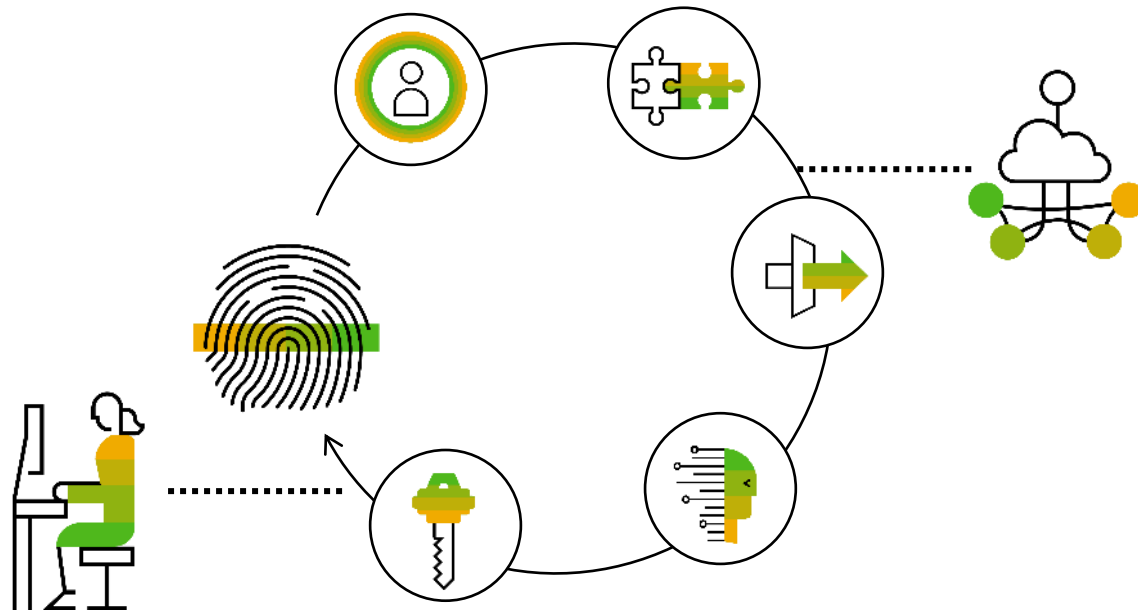
Efficiency & Cost



Sustained Compliance

A vision for cloud identity and access governance

A simple-yet-comprehensive, cloud-based identity management and access governance solution that provides smooth integration for a superior user experience in complex environments and that is adaptive to the changing business needs of growing organizations.



Organizations require a lifecycle process for **managing** user identities and **governing** identity and access requests **on premise** and in the **cloud**:

- Secure environment for managing identities
- Comprehensive access governance capabilities
- Compliant, auditable governance
- Simple, seamless, and transparent processes
- Up-to-date, scalable, and extensible solution

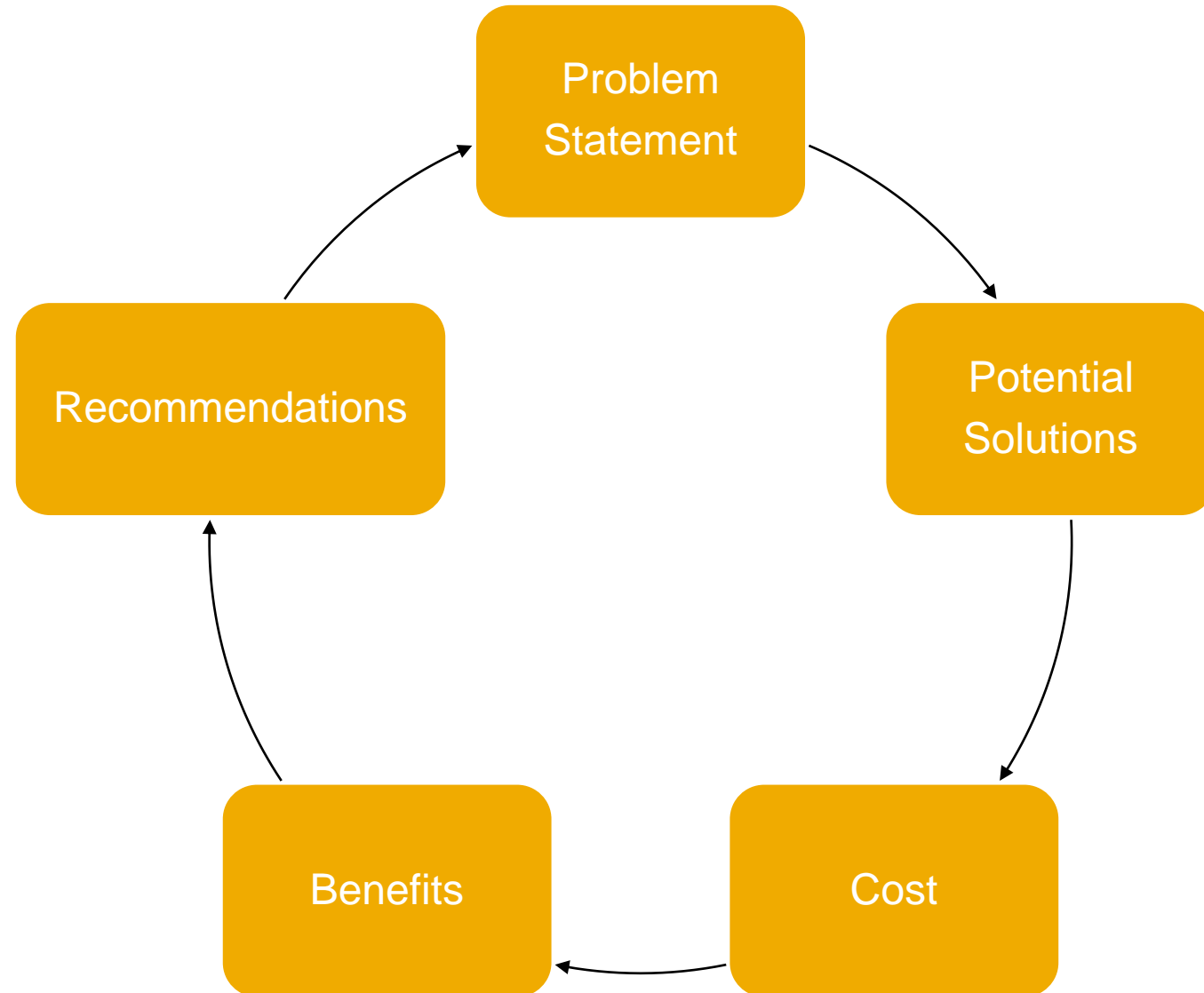
Building the business case (Part 1)



READY.

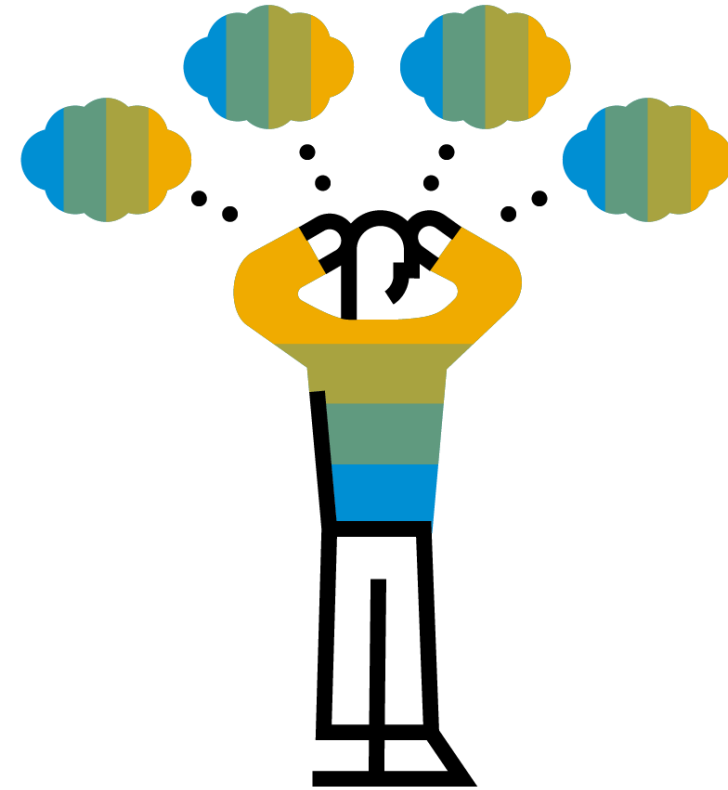
GET

Building the Business Case - The 5 Steps?



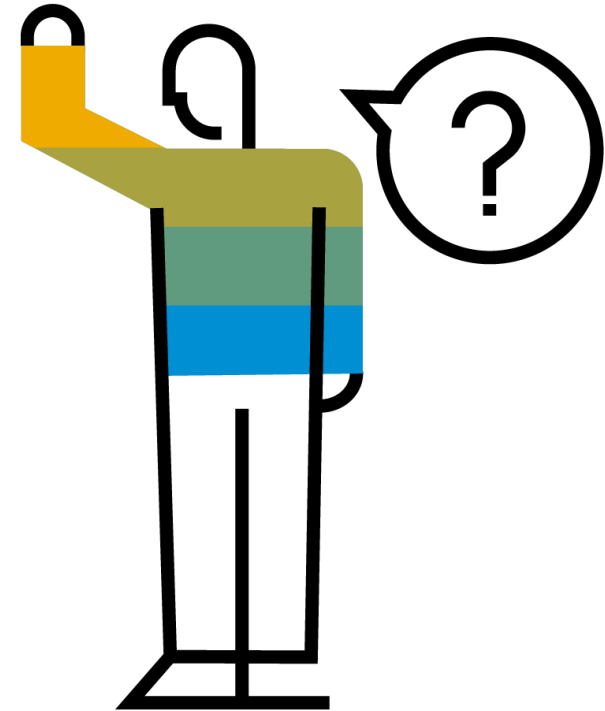
1- Building the Business Case - The Problem Statement?

**All business cases
should start with a
problem statement.**



Discussion #1

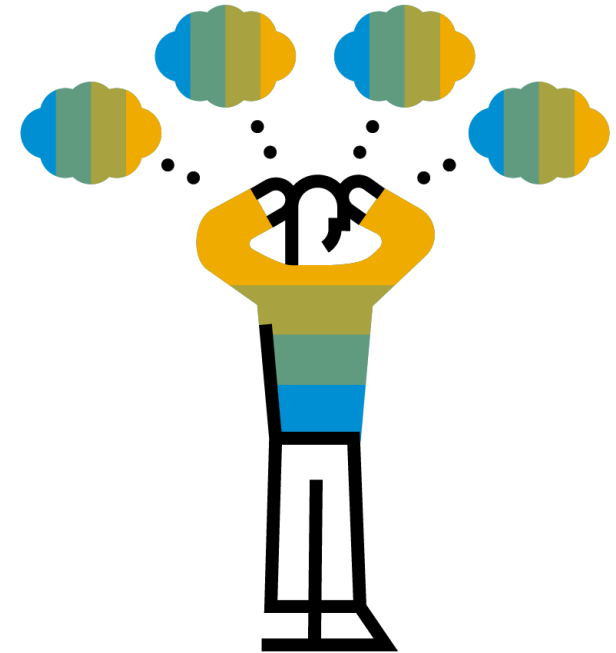
- What business problems are you looking to address.
- What is your biggest Identity Access Governance concern.
- What Identity Access Governance business problems or concerns are you looking to address?



2 - Building the Business Case – Potential Solutions

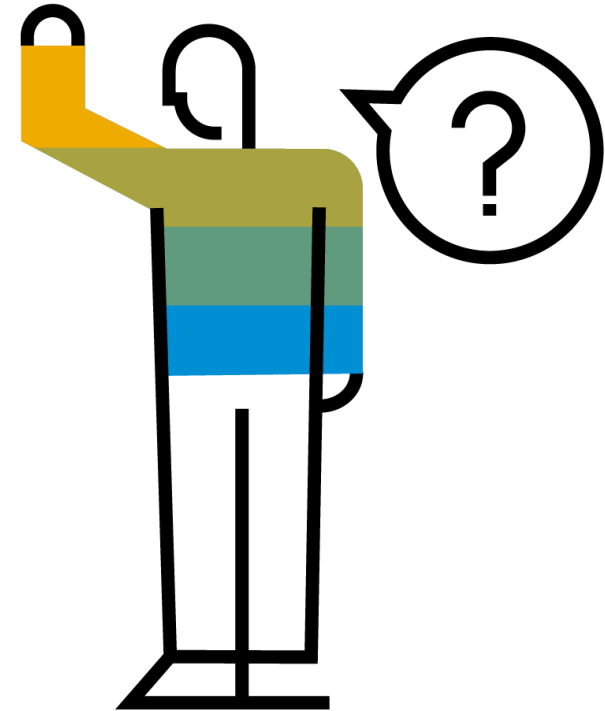
Considerations

- Compatibility with existing deployments?
- Do you have your own teams to handle Identity Access Governance?
- Do you trust your data to 3rd party?
- Do you have specific industry Identity Access Governance requirements?



Discussion #2

- What Identity Access Governance technologies are you considering?
- How did you identify these technologies?
- What is the main influence on your selection?
 - Existing IT portfolio integration
 - In house or outsourced?
 - Cloud ready?



Break

What's Happening in Cybersecurity



Building the business case (Part 2)



**READY.
GET**

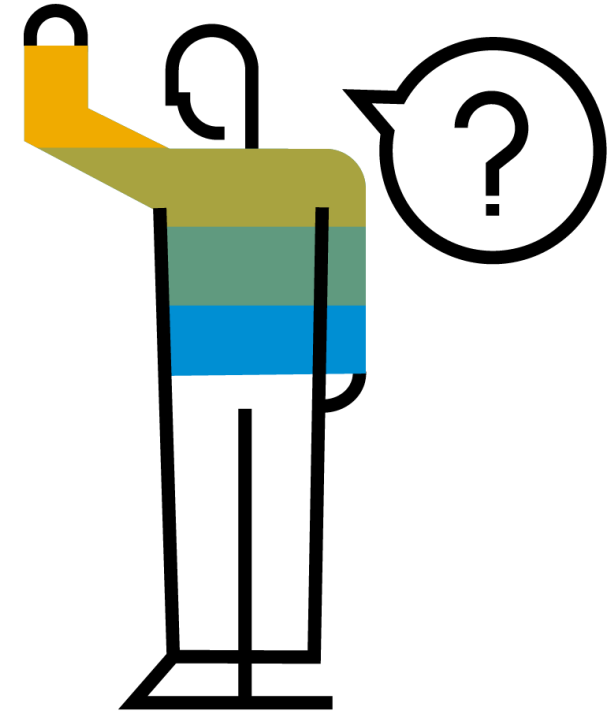
3 - Building the Business Case – Cost Benefit Analysis

- When it comes to building a business case for investment in Identity Access Governance it is difficult to calculate an ROI.
- Unlike selling a product or service where it is easy to estimate costs and revenues when it comes investment in security how do you calculate the value or business benefit of something that doesn't happen
- The problem is that standard calculations to evaluate investments are based on expected cash flow, in the form of revenue earned or expenses avoided



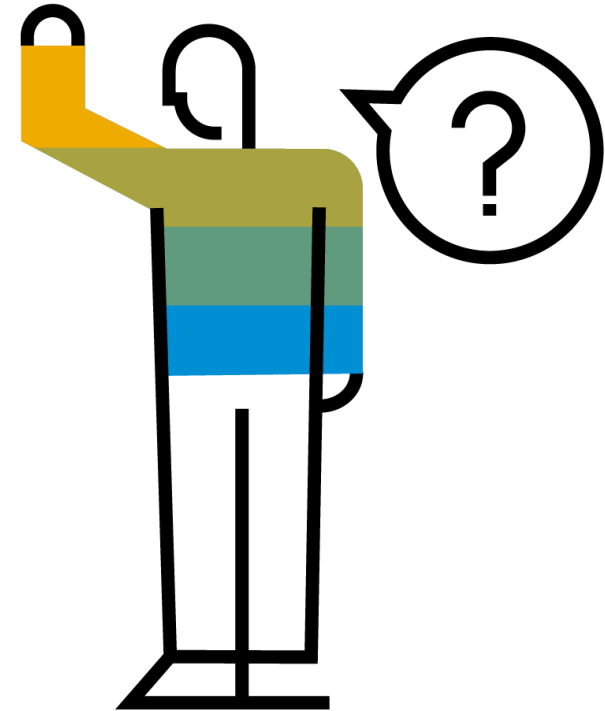
Value Drivers

- Value Driver: 1. Reduce Fraud
- Value Driver: 2. Reduce Audit Cycles and Cost
- Value Driver: 3. Reduce Costs Generated by User Administration
- Value Driver: 4. Reduce Role Creation and Management Time and Effort
- Value Driver: 5. Reduce Super-User Management Workload
- Value Driver: 6. Reduce Remediation Workload
- Value Driver: 7. Reduce Effort for Report Creation, Maintenance and Reviews
- Value Driver: 8. Streamline Management Review, Assessment & Certification Process
- Value Driver: 9. Manage user refinement and mitigating controls



Discussion #3

- Have you or your organization made a cost benefit analysis or a financial business case for investment in Identity Access Governance?
- How does your organization allocate a budget for investment in Identity Access Governance?
 - Does your organization have a separate budget for Identity Access Governance?
 - Do you have a stand alone security team with it's own budget?



4 - Building the Business Case – Recommendations

1. Define the problem.
2. Identify the potential solutions and shortlist.
3. Perform Cost Benefit analysis on each potential solution
4. Recommend a solution
5. Return to 1 and Start Again.



**Identity Access Governance
is a Continuous Process**



SAP GRC Value Calculator



Value Calculator

- Configure ✓
- Analyze Risk
- Manage Access
- Maintain Roles
- Certify Authorization
- Monitor Privileges
- Total Value

Configure

Provide your best estimate for these various company attributes.

Number of Monitored Users Including Full-Time Employees and Contractors	<input type="range"/>	16 thousand
User Administration Average Fully-Loaded Cost Per Full-Time Employee	<input type="range"/>	70 € thousand
Distinct Applications Across the Organization	<input type="range"/>	20 applications
Segregation of Duties Cycle Time Per Employee	<input type="range"/>	5 minutes
Time Required to Review Each Segregation of Duties	<input type="range"/>	5 minutes

How does this work?

The inputs provided in this step will help drive calculations in the following areas, beginning with Analyze Risk.

SAP GRC Value Calculator



Break

Overview of **SAP Financial Compliance Management**

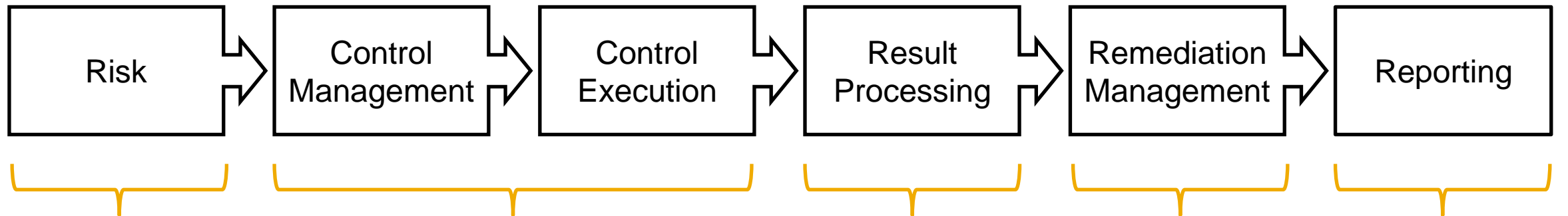


VISION: SAP Financial Compliance Management

Next-generation
GRC risk-based
controls solution
for the cloud



- **Leverage one platform** for many uses cases across the enterprise
- Support of S/4HANA Cloud, Public and Private Editions, as well as hybrid landscapes
- **Transform governance, risk, and compliance (GRC)** from a cost factor (imposing task) to a strategic differentiator (business optimization)



Use Case

- SOX-type Compliance
- Finance & Accounting practice
- Non-Finance internal controls
- ESG
- ...

Detection

Identify deviations from given patterns, policies, etc.

Investigation

Automated decisions for issue triggering based on results

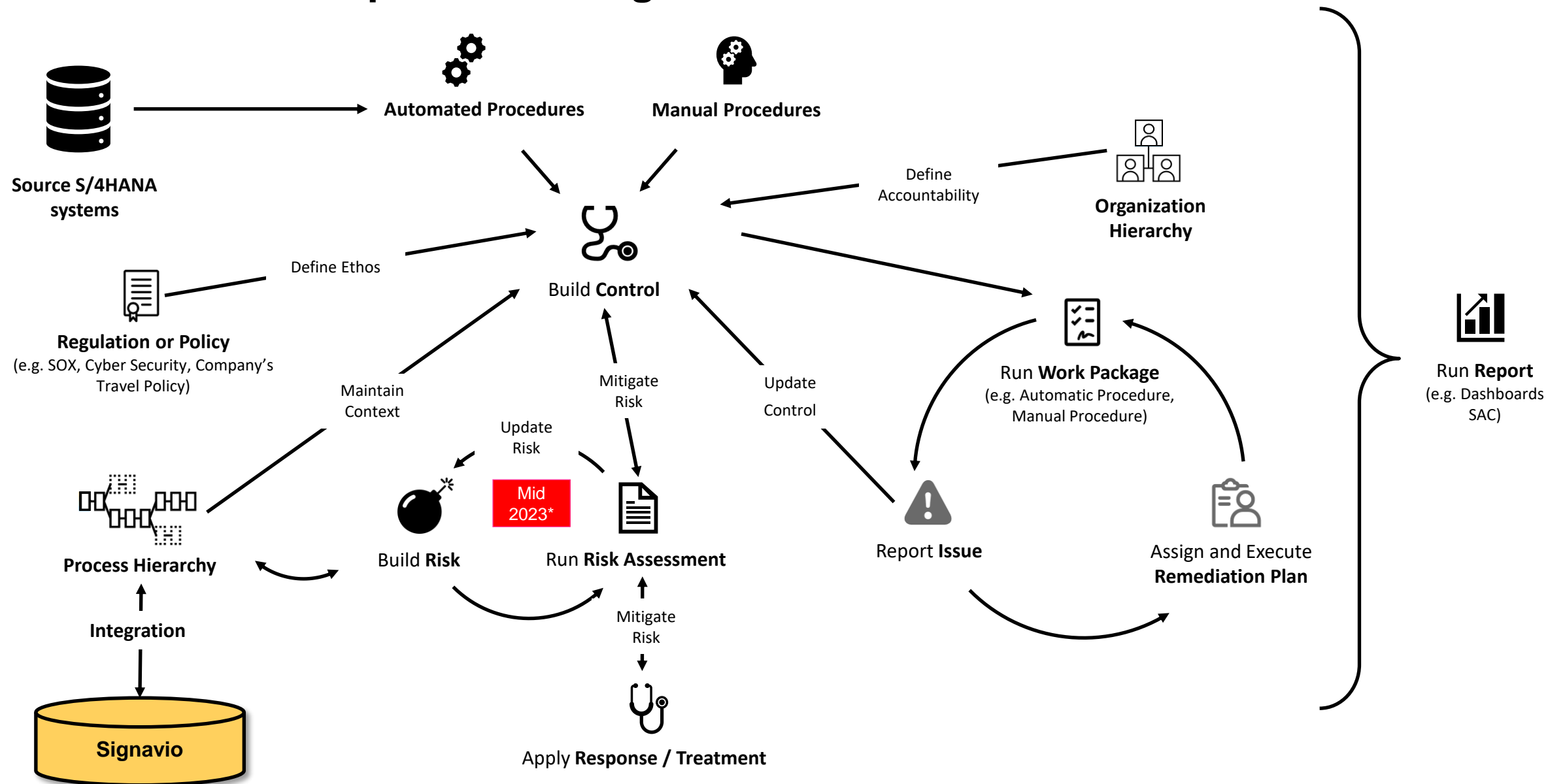
Remediation

Automated triggering, tracking and execution of remediation activities

Reporting

Analyze and optimization and reporting

SAP Financial Compliance Management: Business Flow



* Dates may change

SAP Financial Compliance Management – Objectives

Improve compliance process efficiency and reduce costs



Leverage predefined automated content to reduce manual workload and improve efficiency:

- Customizable ready to run work packages for automated monitoring of controls
- Consolidate controls
- “Document once, comply with many” type approach for reduced compliance effort

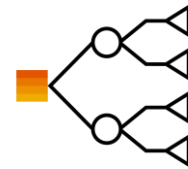
Improve early detection and lower impact of control and risk failures



Move from a reactive compliance function to a proactive one:

- Embedded controls in the source systems for full visibility and performance
- Realtime alerting on exceptions raised for faster remediation
- Increase the number of automated controls, include associated manual controls

Simplify and consolidate compliance requirements



Build a centralised agile compliance function to rapidly react to new and changing regulatory requirements:

- Easily onboard new entities, departments, or activities in your centralised compliance program
- Develop a “compliance culture” through efficient technology support

SAP Financial Compliance Management - High Level Architecture

Use of CDS views deployed in S/4HANA (Cloud or On-Premise) or on SAP ERP 6.0 (ECC)* exposed through OData services for SAP Financial Compliance Management

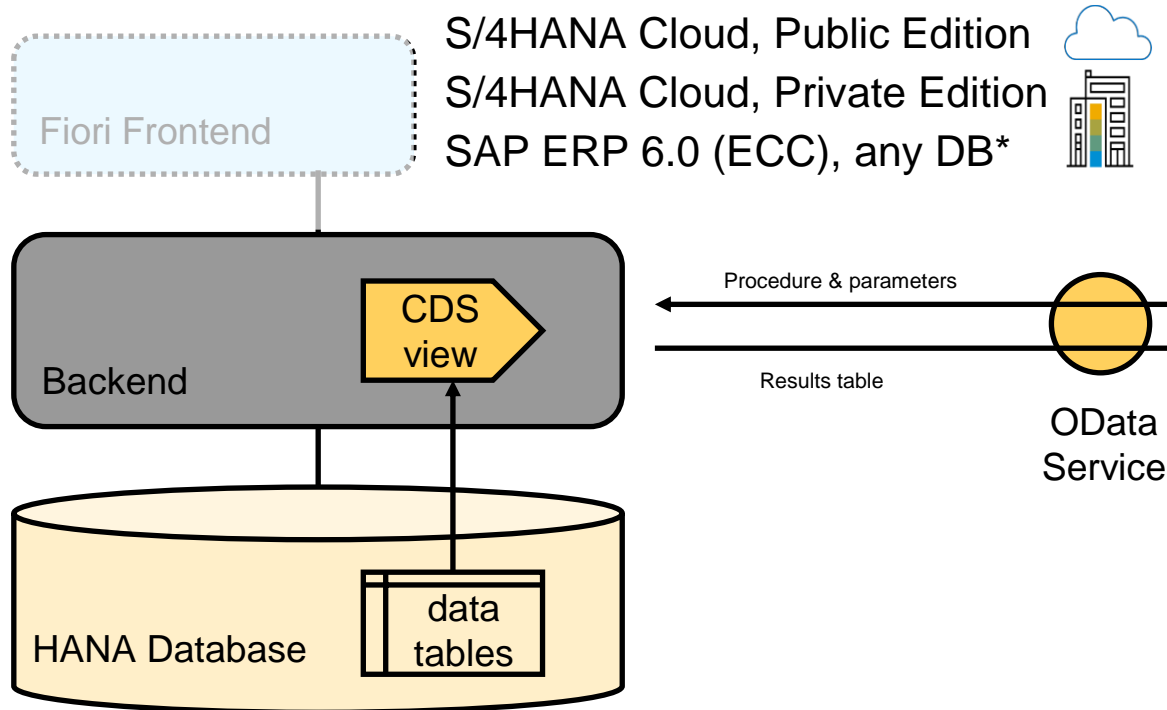
SAP Financial Compliance Management brings the logic to the data, only results are returned

→ Use OData Service as communication protocol

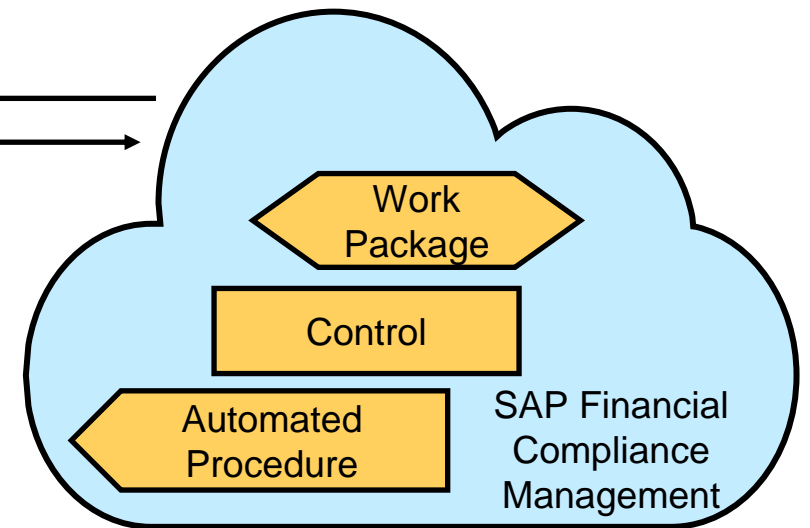
- Call the back-end system via OData Service
- Return results once CDS run is complete

SAP S/4HANA

SAP

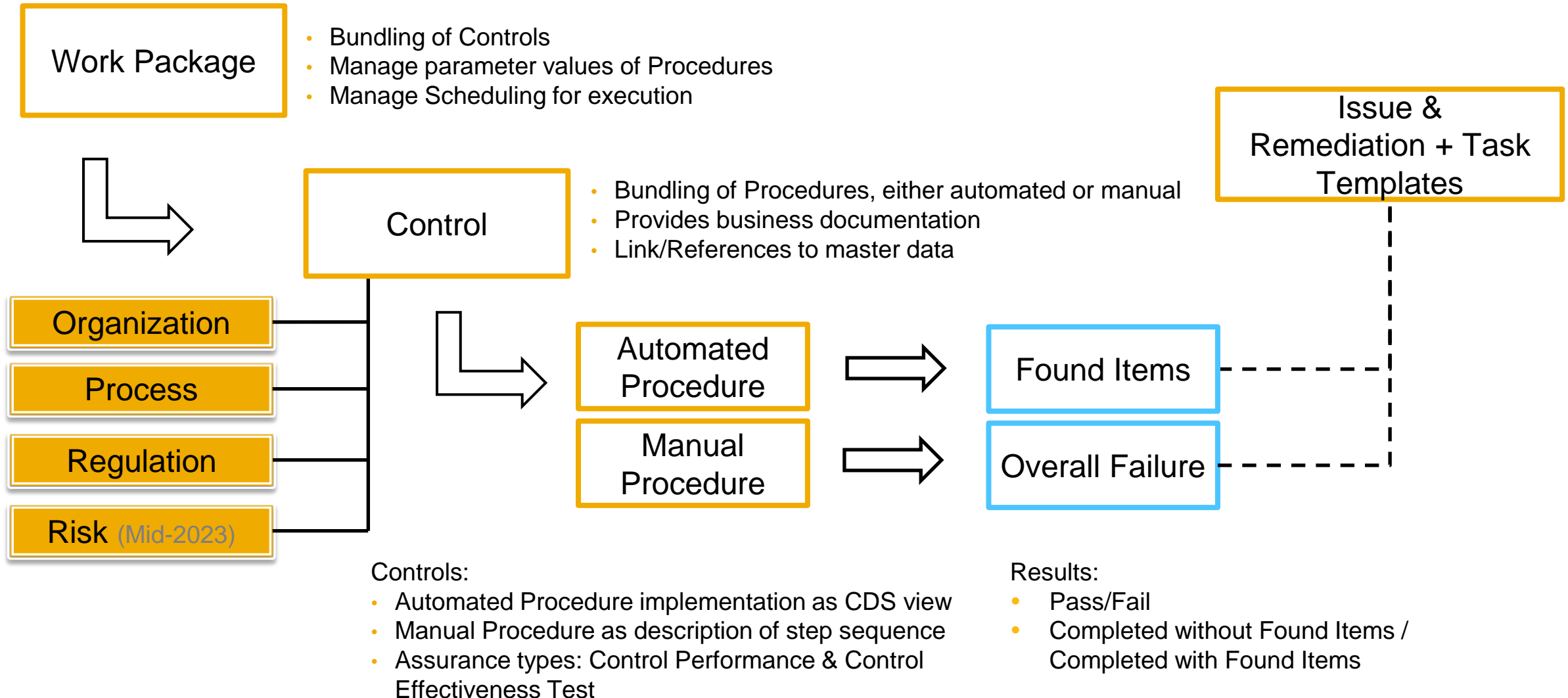


SAP Business Technology Platform



* Baseline Automated Procedures & OData connection has to be created in SAP ERP 6.0 as part of the implementation

SAP Financial Compliance Management - Main Entities Overview



Ready to Use Content with S/4HANA

SAP Financial Compliance Management ships with over 70 rules for use as Automated Procedures (3 for Tax Compliance)

These can be added to by customers

Partners will produce and sell their own content packages too, via the GRC Content Hub Service

<https://help.sap.com/viewer/eb2cb166f76248bdba43bf04fccd143e/1.0/en-US/c6bccce22805495c8c2432209bf80474.html>

[<Previous](#)

Content Overview ☆

The content for SAP S/4HANA Cloud involves checks on business data and transactions in SAP S/4HANA Cloud to help detect non-compliant activities or activities that may pose risks.

Prerequisites

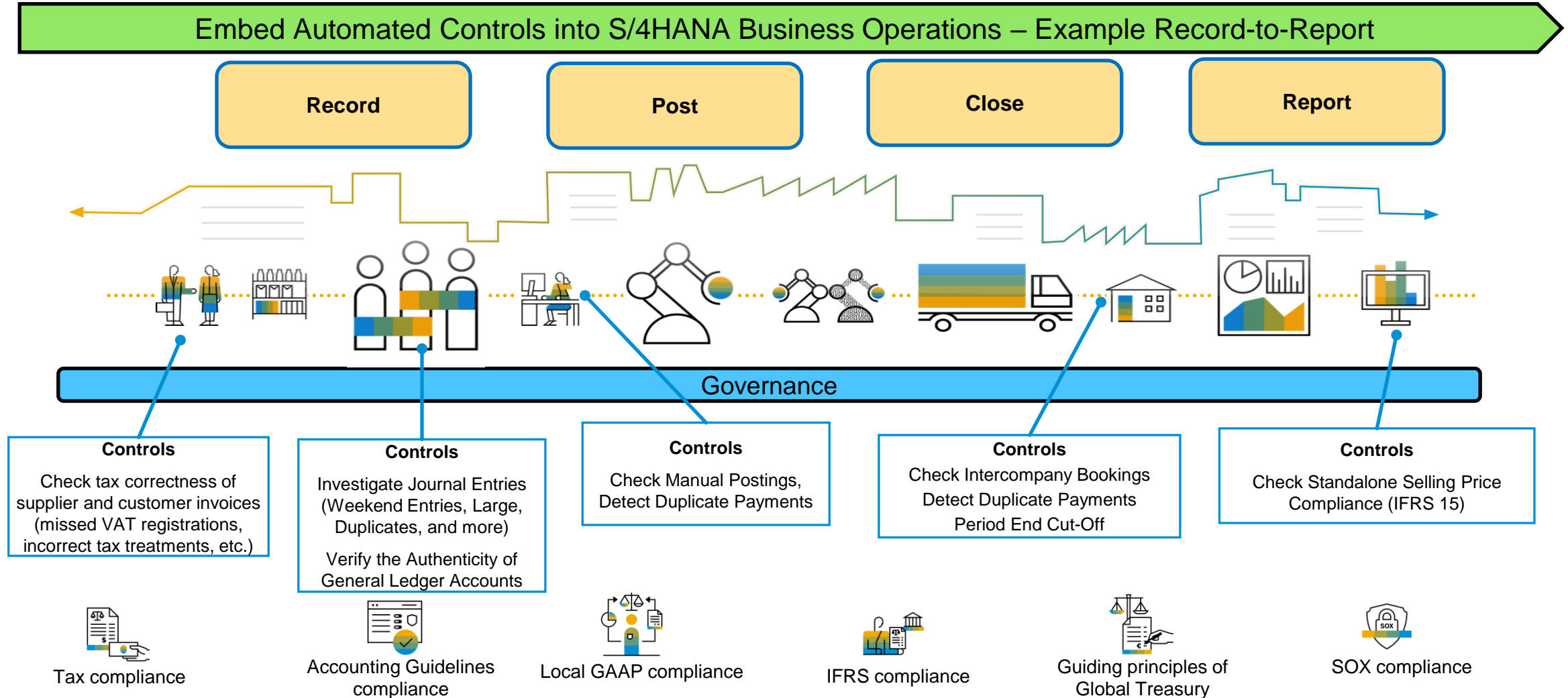
In order to use the content for SAP S/4HANA Cloud, you first need to perform the following actions:

1. Establish a connection to SAP S/4HANA Cloud. For instructions, see [Connectivity](#) in the *Administration Guide for SAP Financial Compliance Management*.
2. Follow the [Set-up Instructions](#) for Scope Item 3KY.

Content Overview

Content Item			Minimum Release Required
Controls	Automated Procedures	Manual Procedures	SAP S/4HANA Cloud
Journal Entries			
Check General Journal Entries Entered on Weekends	Extract General Journal Entries Entered on Weekends	N/A	2102
Period End Cut-Off	Extract Journal Entries Posted for Past Fiscal Period	Cut-Off Testing	2102
Check for Duplicate Journal Entries	Duplicate Journal Entries with Same General Ledger Account and Description	N/A	2105
	Duplicate Journal Entries with Same Amount and Description	N/A	2105
	Duplicate Journal Entries with Same General Ledger Account and Amount	N/A	2105
Investigate Journal Entries	Journal Entries Posted by General Ledger Accounts Not Used for Specified Amount of Time	N/A	2105
	Journal Entries That Exceed Defined Threshold Amount	N/A	2105
	Journal Entry Items That Exceed Defined Threshold Amount	N/A	2105
Check Manual Postings	Manual Postings Created By Dialog User Accounts	N/A	2105
Check Intercompany Bookings	Intercompany Bookings with No Trading Partner	N/A	2105
Check Purchase Orders with Goods Receipts	Purchase Orders with Cleared Invoices and No Goods Receipt	N/A	2105
	Purchasing Document Items With Overpaid Goods Receipts	N/A	2105
	Purchase Order Items Where Delivery of Excess Goods is Possible	N/A	2105
Suppliers			
Check Suppliers	Blocked Suppliers with Open Items	N/A	2105
	Suppliers with Duplicate Invoice Check Disabled	N/A	2105
	Suppliers with Evaluated Receipt Settlement Enabled	N/A	2105

Record-to-Report Process – Example Controls



SAP Financial Compliance Management

Key features for cost effective internal controls over financial reporting in the Cloud

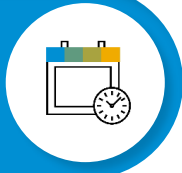


Establish



- Centralize and agree various financial compliance obligation requirements and scope
- Standardize control documentations and assign controls to regulations
- Associate users to roles and responsibilities for automated assignment

Develop



- Select pre-defined out the box control frameworks
- Document compliance risk, process, control, frequency as per business and audit needs
- Confirm necessary control coverage
- Develop new control framework documentation as required

Implement



- Configure predefined automated and manual content, refine and create as necessary
- Automated runs with exceptions raised only when relevant
- Manual procedures for controls that can't be automatically monitored

Evaluate



- Real time visibility on exceptions identified during automated and manual control runs
- Processing of issues raised via customisable logic
- Contextualised data about issue evaluation and closure

Maintain & Improve



- Native dashboards that can be personalized by users
- Export key tables for external reporting
- Leveraging SAP Analytics Cloud service for custom reporting, integrate with other content

Questions

Contact:

Vishal Verma vishal.verma@sap.com

Fiata, Gabriele gabriele.fiata@sap.com

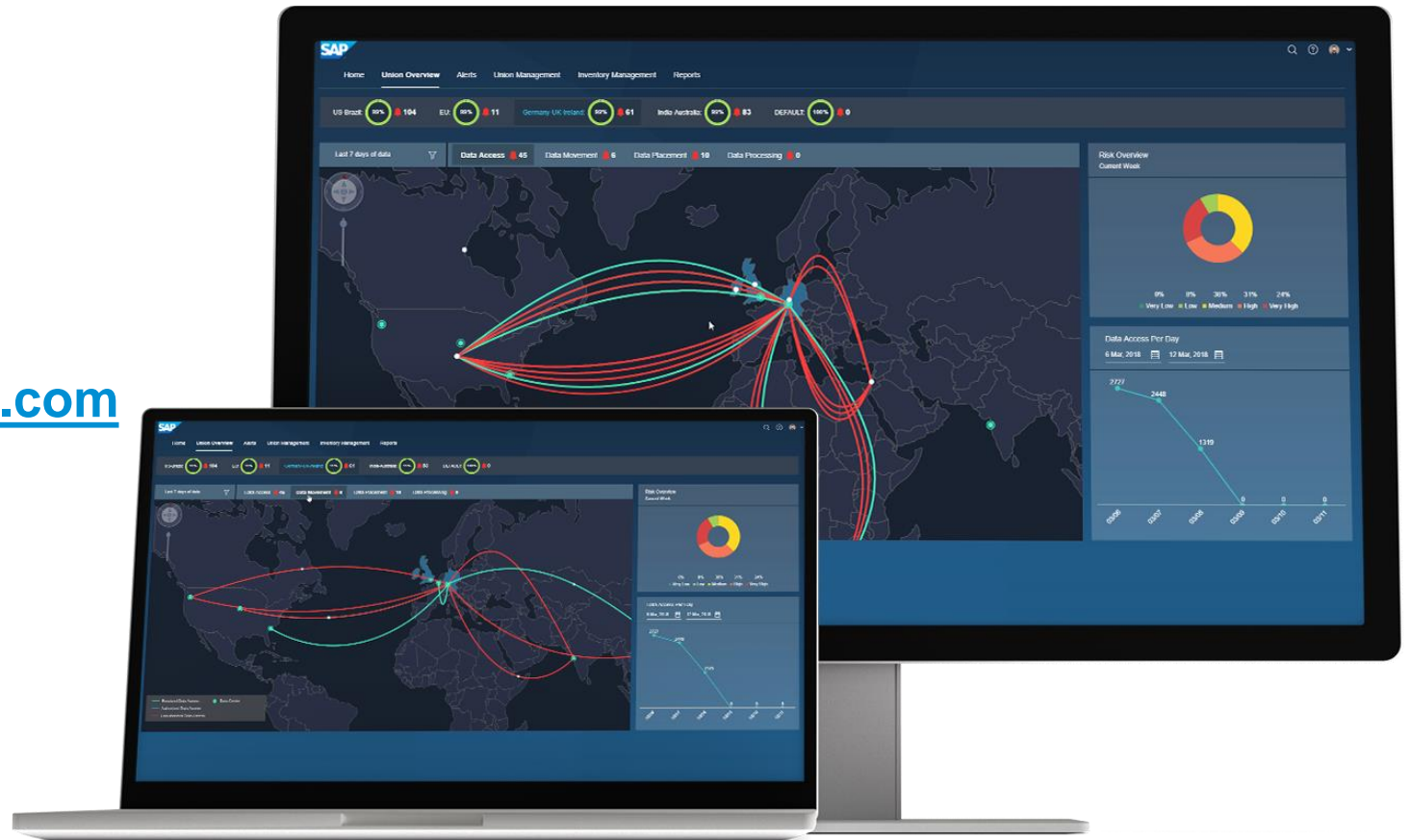
Swetta Singh swetta.singh@sap.com

Chris Radkowski chris.radkowski@sap.com

James Chiu j.chiu@sap.com

For more information visit:

www.sap.com/grc





SAPinsider.org

PO Box 982Hampstead, NH 03841
Copyright © 2023 Wellesley Information Services.
All rights reserved.

SAP and other SAP products and services mentioned herein as well as their respective logos are trademarks or registered trademarks of SAP SE (or an SAP affiliate company) in Germany and other countries. All other product and service names mentioned are the trademarks of their respective companies. Wellesley Information Services is neither owned nor controlled by SAP SE.

SAPinsider comprises the largest and fastest growing SAP membership group worldwide, with more than 600,000 members across 205 countries.
