

The background of the slide is a photograph of a conference or trade show. It shows several people in business attire, some looking at a presentation screen. The screen displays text related to 'DevOps & Test Automation'. The entire image is overlaid with a semi-transparent blue filter.

3M Adopts SAP Change Automation to Improve Speed & Efficiency

Ghulam Jafferri, Senior Director IT, 3M

Eran Kriegshauser, Client Director, Basis Technologies

SAPinsider
Las Vegas

2023

SAPinsider



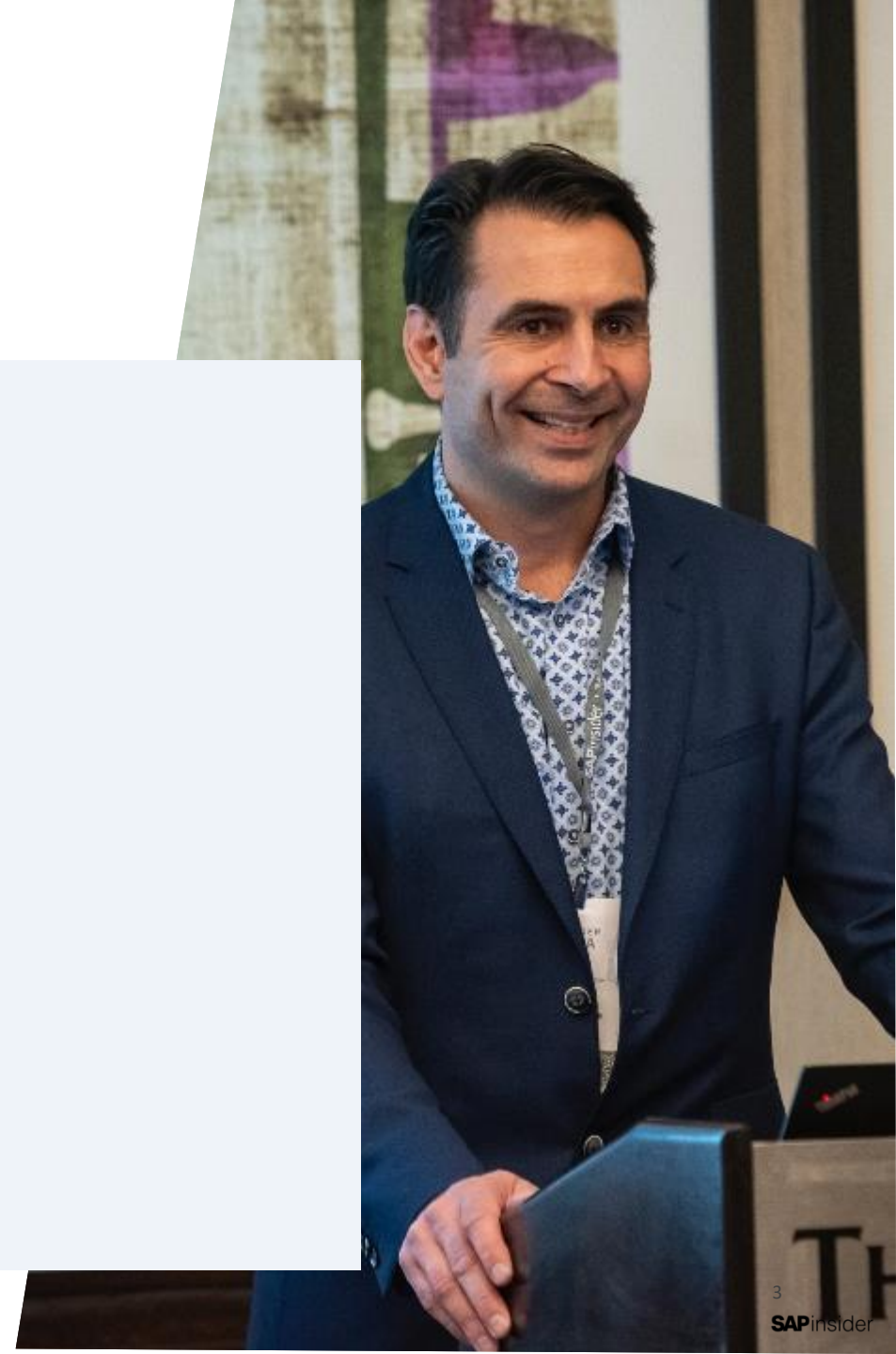
In This Session

Attendees will learn how:

- Adopting SAP change automation has enabled 3M to massively reduce downtime and accelerate project delivery
- Replacing manual processes with automation can speed innovation, cut costs, and reduce risk
- Integrating SAP with DevOps tools like Jira enables end-to-end change management

What We'll Cover

- About 3M
- Strategic Business Drivers
- Challenges with SAP Change
- ActiveControl at 3M
- Learnings and Benefits of Automation
- About Basis Technologies
- Wrap-up / Q&A



About **3M**

- \$34.22 billion in sales
- Sales globally in majority of countries
- Four business groups
- 90,000+ 3Mers globally
- 32,000+ patents globally
- 100+ straight years of dividends
- One of 30 companies in the Dow Jones Industrial



Business Transformation

Moving to One Globally Integrated Platform



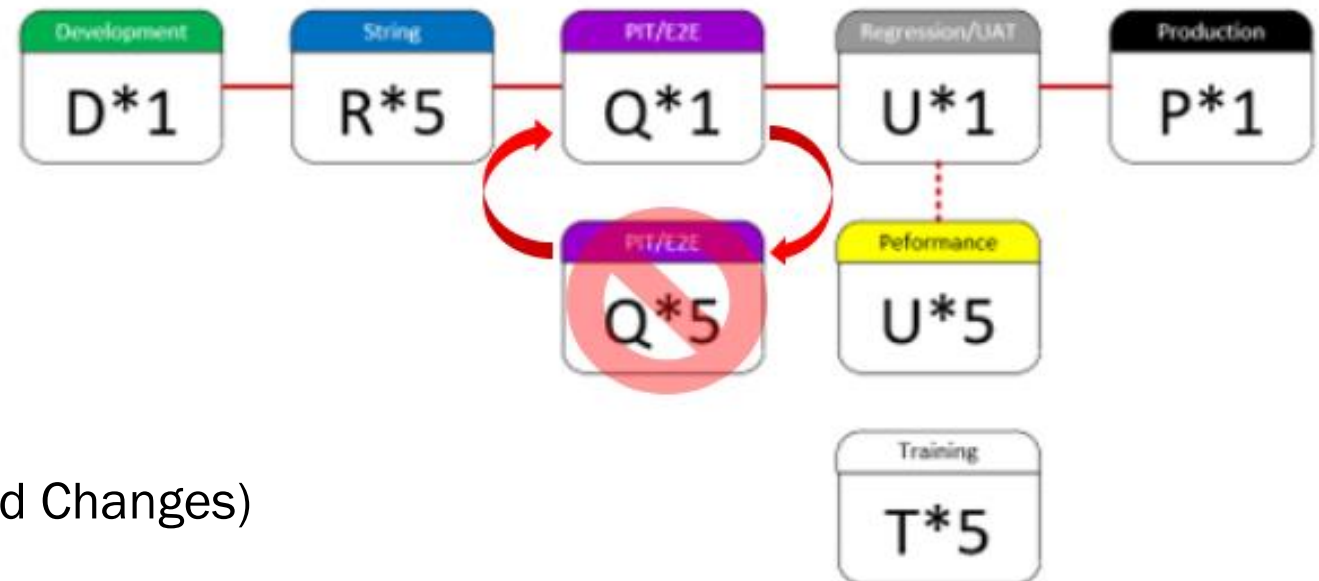
A more efficient 3M:

- Common global business practices and expanded IT capabilities
- Key enabler to a fully integrated supply chain
- Improved working capital management
- Increased customer intimacy and responsiveness
- Improved business planning and decision-making speed
- Greater operational efficiencies

SAP Landscape

Complex Landscape layered with multiple deployments and timelines

- ❖ ~20 Production SAP Systems
- ❖ 10+ Environment Refreshes/year
- ❖ 2 or more major Deployments per year
- ❖ 4 Periodic releases
- ❖ 48-52 Weekly Release (Low impact – Trusted Changes)



Challenges with SAP Change Approach before ActiveControl

User frustration

- Dual maintenance of changes in tools that aren't integrated
- Missed milestones can cause changes to be dropped from releases
- Lack of visibility

Code events

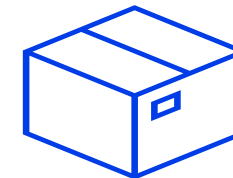
- Transport sequencing depends on developer knowledge and release management's organization
- Required checks can cause delays

Speed

- Manual, spreadsheet-based change management
- Slow project delivery and bottlenecks (Many handoffs)
- Inefficient processes (Quality mistakes)



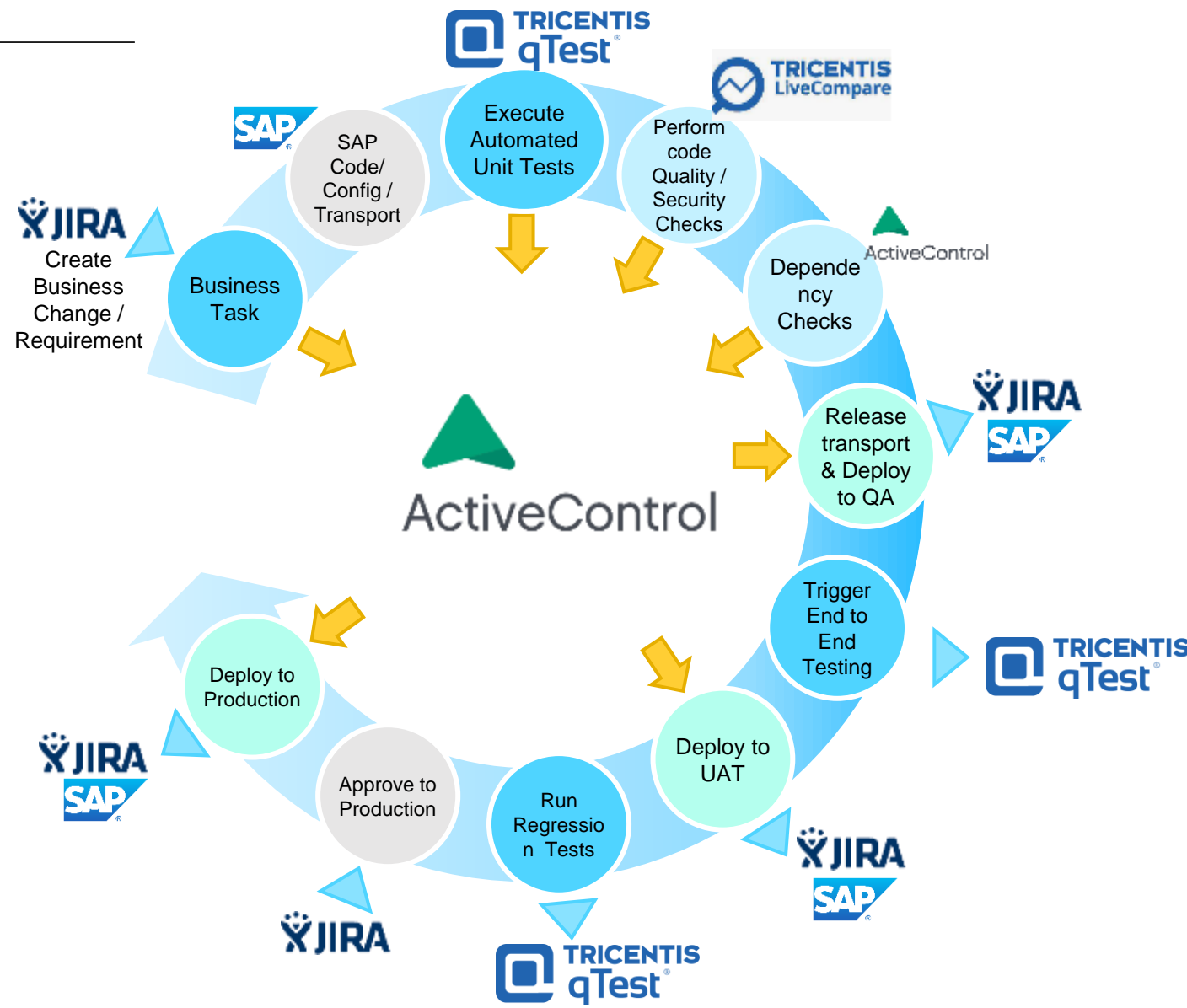
13,000 transports per year



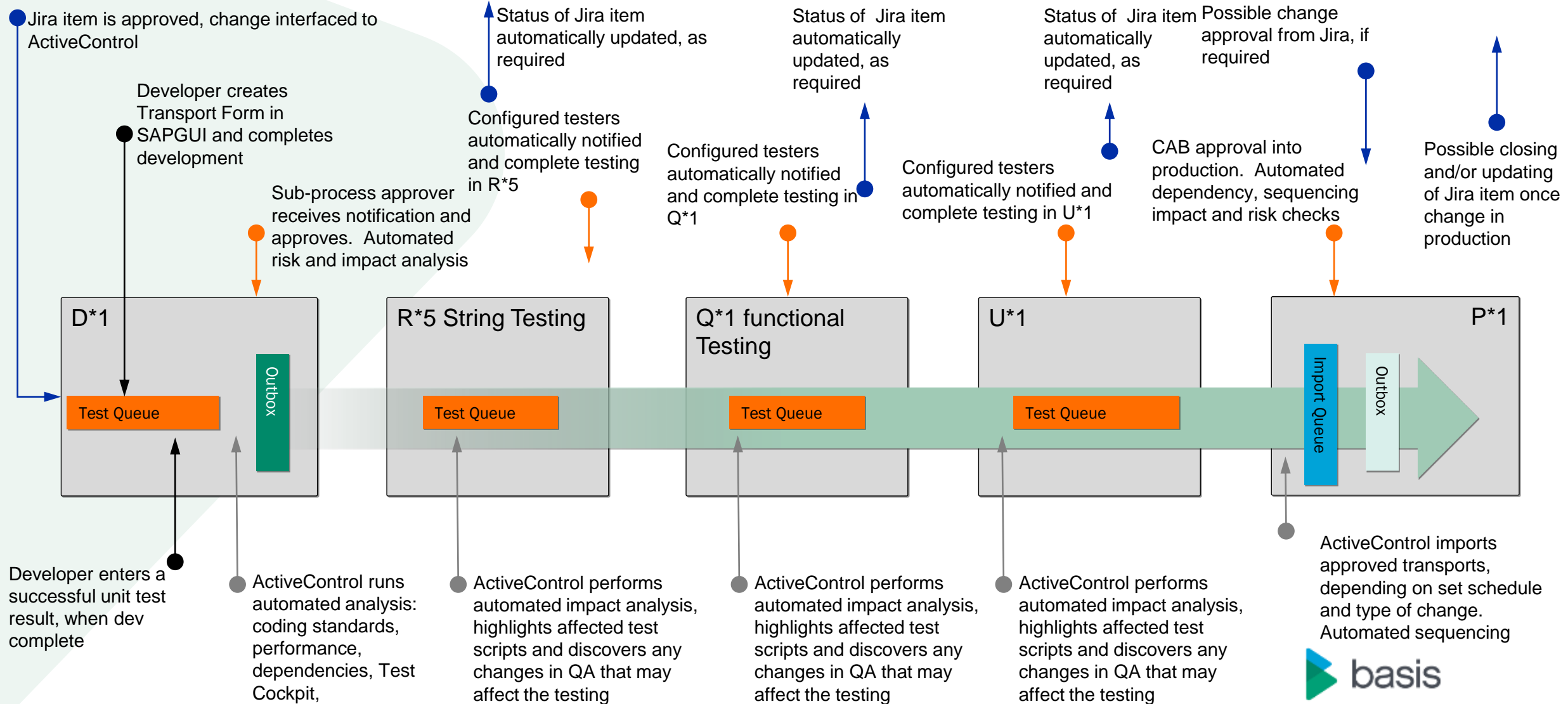
2,500+ low-risk Changes per year

Why ActiveControl ?

Native Integrations allow for customize automated touchpoints across various tools and processes



ActiveControl Jira Workflow

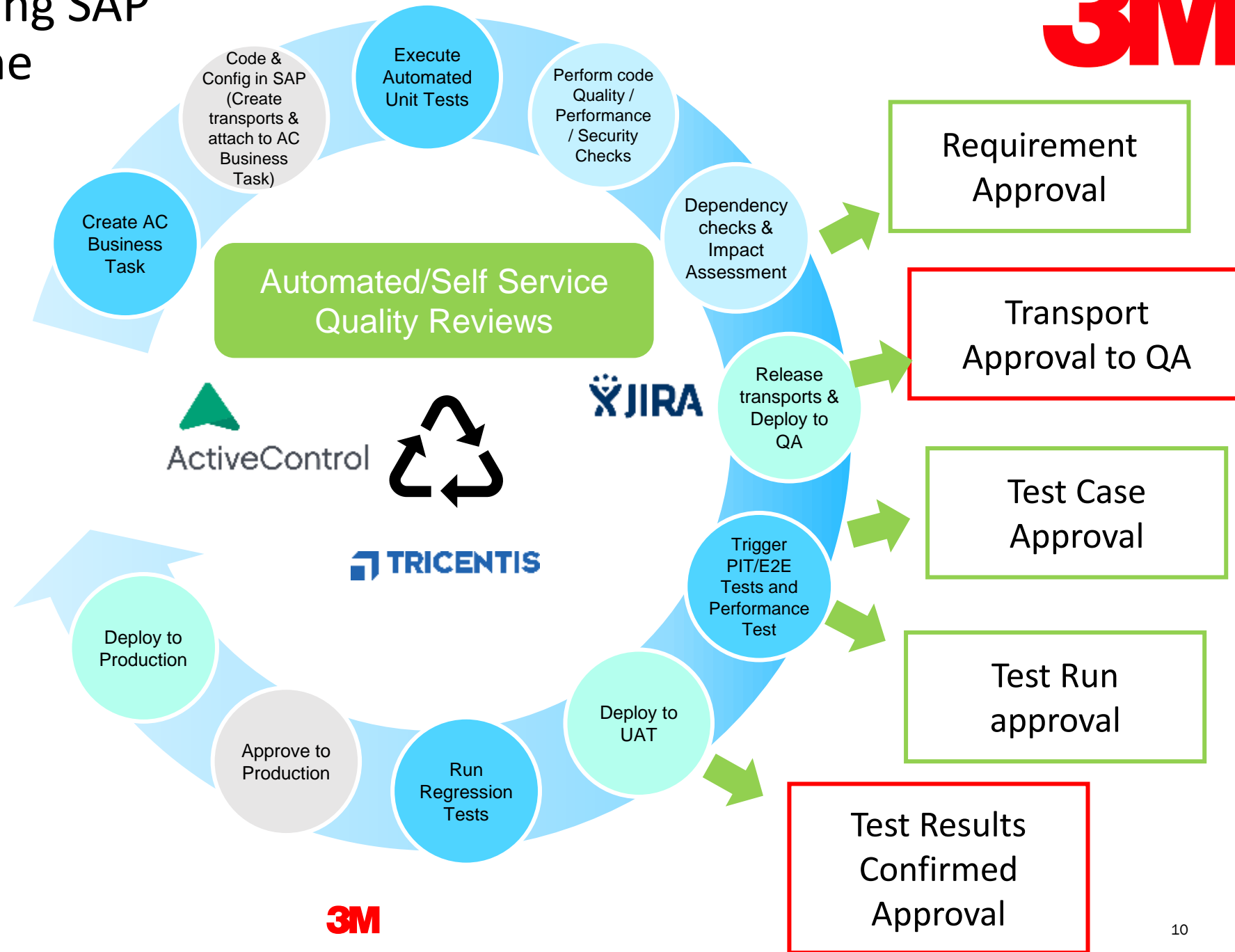


Enhancing the Existing SAP Change Pipeline



Goal: Improve Quality,
Reduction of Manual
Steps

Integrating/enhancing
tools and processes to
eliminate overhead and
dual maintenance while
increasing quality.



Where are we now ?

April 2022

Phase 1

- ☒ ECC
- ☒ EWM
- ☒ GTS
- ☒ TM

April 2023

Phase 2

- | | |
|----------------------------------|---------------------------------|
| <input type="checkbox"/> APO/SNC | <input type="checkbox"/> HCM |
| <input type="checkbox"/> BW | <input type="checkbox"/> MII |
| <input type="checkbox"/> CRM | <input type="checkbox"/> PI |
| <input type="checkbox"/> EM | <input type="checkbox"/> SNC |
| <input type="checkbox"/> Gateway | <input type="checkbox"/> Solman |
| <input type="checkbox"/> GRC | <input type="checkbox"/> SRM |

2023

- ❖ Requirement Approval
- ❖ Transport Approval to QA
- ❖ Test Case Approval
- ❖ Test Run Approval
- ❖ Test Results Confirmed

10,000 hours
Annually

Date/Time	Activity
Feb 27 th - March 3 rd	Clean the ChaRM conversion List
March 13 th - March 24 th	Install and have all RFCs created.
March 27 th - March 31 st	Adding config to the tool and ChaRM Conversion
April 3 rd - April 7 th	Documentation and add Jira config

Learnings

- ☐ Big Bang Approach might have saved time and money
- ☐ ActiveControl is easy to implement/manage and use
- ☐ Plan inflight work conversion efficiently
- ☐ Training your teams is critical to smooth transition
- ☐ Possible to take on more automation opportunities with initial rollout

Benefits of Automation using ActiveControl



- ✓ Efficiency/effectiveness
- ✓ Productivity improvement
- ✓ Advance Reporting Capabilities
- ✓ Integration with Jira
- ✓ Automation Opportunities

About Basis Technologies



SAP® Certified
Integration with SAP S/4HANA®

SAP® Certified
Powered by SAP NetWeaver®

- Change & Test Automation engineered for SAP
- Founded in 1997; SAP Experts
- Global presence: London, Dallas, Sydney, Berlin, Budapest
- Over 200 Customers across 25 industries
- 24 x 7 Global Support

Booking.com



NBCUniversal



3M

IPG



RALPH LAUREN

T Mobile

HONDA
The Power of Dreams

Electrolux

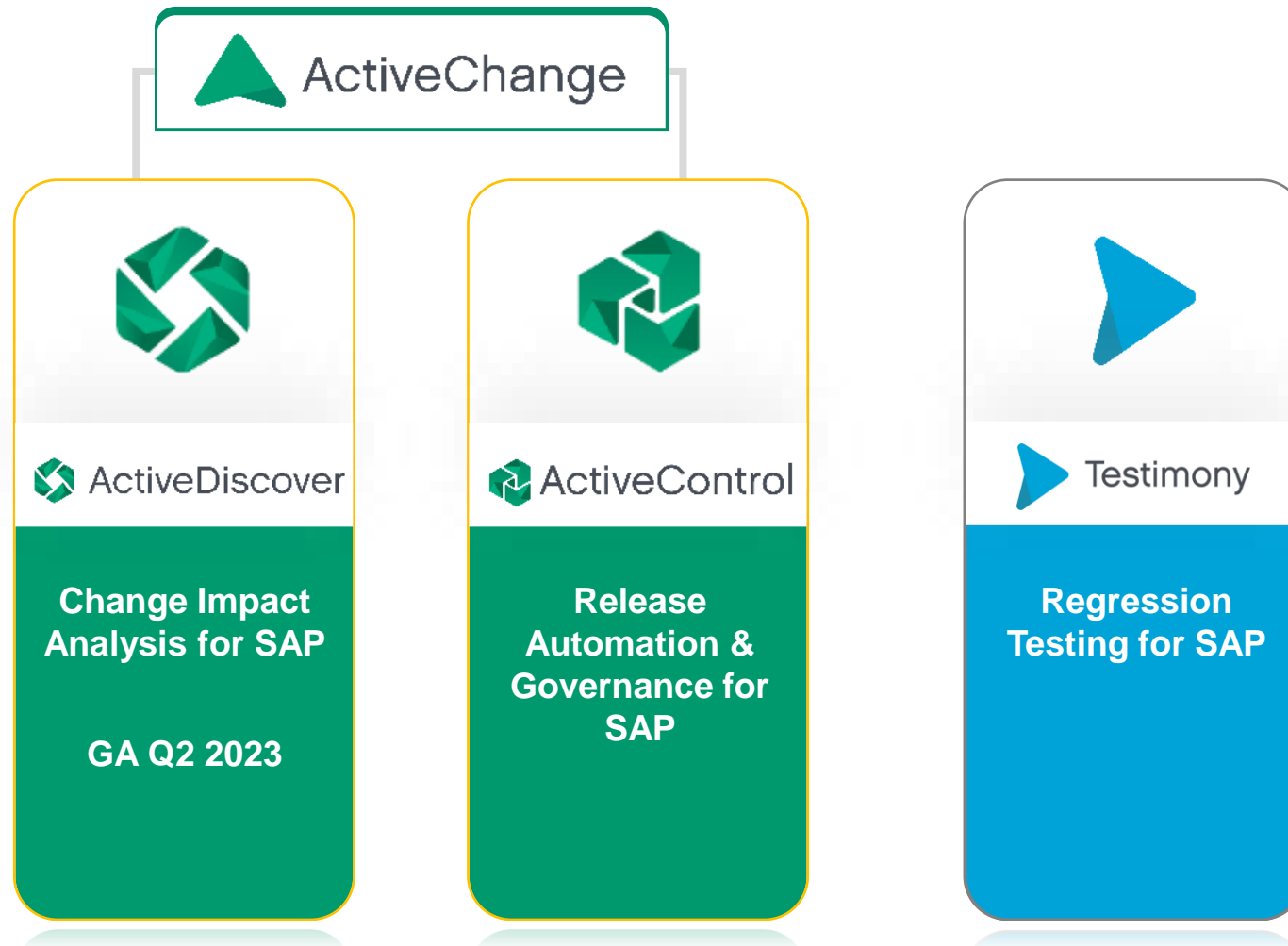


Columbia

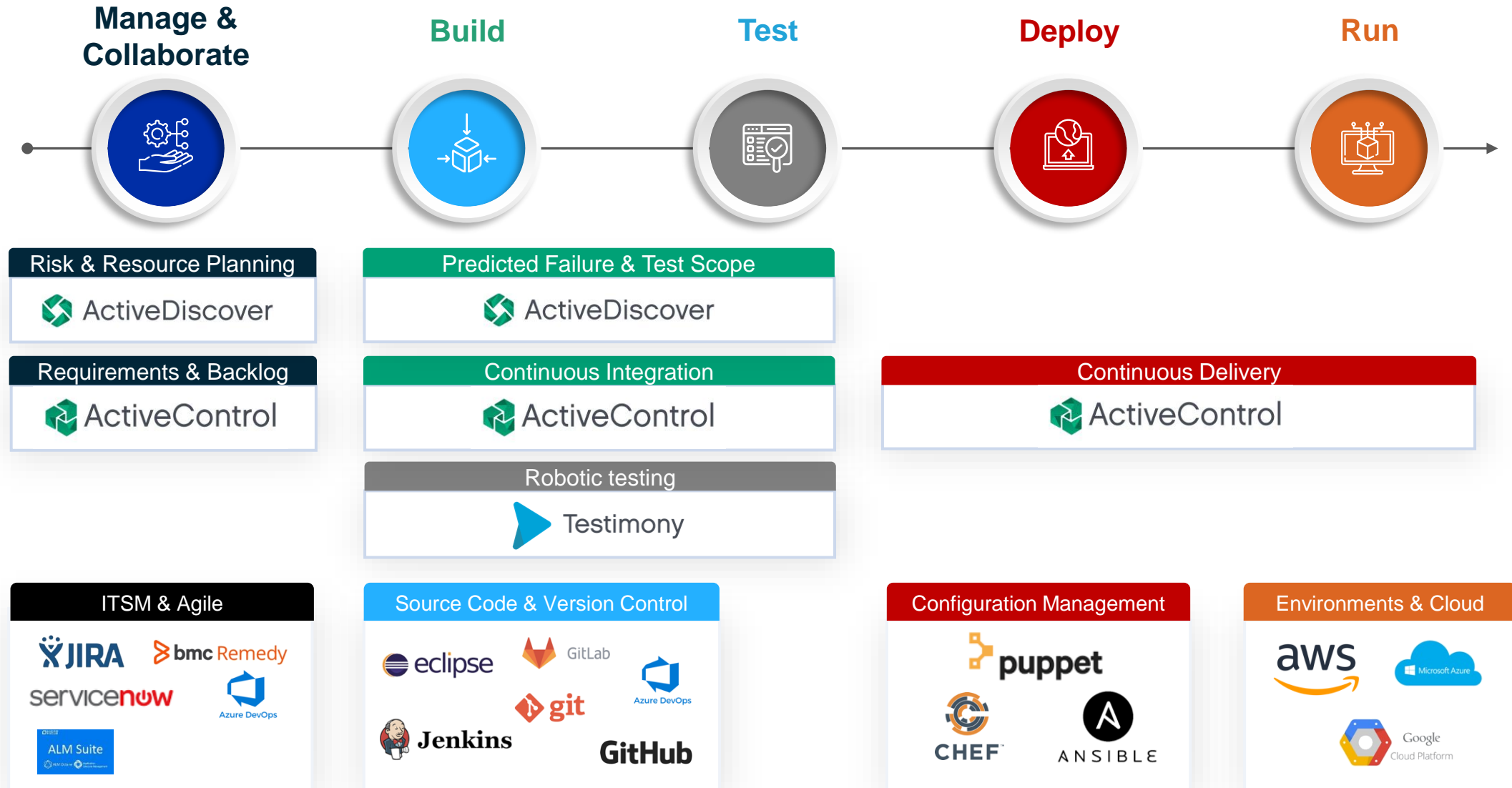
H&M

Basis Technologies Product Portfolio

CHANGE AUTOMATION PLATFORM AND REGRESSION TESTING FOR SAP



SAP DevOps Ecosystem



Where to Find More Information

<https://www.basistechnologies.com/resources/10-principles-of-automated-sap-change-and-release-management/>

- eBook describing the 10 principles of automated SAPchange and release management

<https://www.basistechnologies.com/devops-for-sap-solution/>

- Webpage describing how to solve business challenges with advanced SAP change automation

<https://www.basistechnologies.com/resources/john-deere-uses-activecontrol-to-achieve-an-agile-sap-transformation/>

- Case study about John Deere's successful agile SAP transformation with automation

Email Eran at eran@basistechnologies.com



CASE STUDY



John Deere, in collaboration with Basis Technologies, turned an SAP DevOps vision into reality with an integrated, event-driven change process that improves quality, reduces risk, decreases developer cycle time and increases developer satisfaction.

ABOUT JOHN DEERE

Established in 1837, Deere & Company is a world leader in providing advanced products, technology and services for customers whose work is revolutionizing agriculture and construction - those who cultivate, harvest, transform, enrich and build upon the land to meet the world's increasing need for food, fuel, shelter and infrastructure. The company employs over 75,000 people and in 2021 generated revenues of over USD 44 billion.

The Challenge

In 2019, John Deere's Global IT team adopted an Agile Operating Model (AOM) aimed at redefining the way they worked. The model was grounded on the principle of delivering high quality customer-centric solutions more quickly and efficiently, but the path to enterprise speed and agility was blocked: slow, inefficient change management processes couldn't provide the transparency needed for effective risk mitigation.

A more modern, automated approach was required to move changes through complex SAP landscapes quickly without compromising quality.

The Solution

Working in partnership with Basis Technologies, John Deere created a fully automated solution which integrates ActiveControl - Basis Technologies' SAP DevOps automation tool - John Deere's SAP landscape, and John Deere's Service Management (ITSM) system. This new, forward-thinking approach in managing SAP change is helping the company to advance its agile transformation, accelerate delivery of value to customers and drive towards a future of cleaner, greener, smarter solutions.

The automated solution - which also leverages cloud technologies, an ODC provider and an open-source CI tool - has eliminated manual effort, reduced risk, provided far greater visibility, and increased both speed and productivity.

“ActiveControl, with its out-of-the-box APIs, was a catalyst for us to improve our processes, providing more transparency into the SAP change management process and giving us the hooks needed to integrate with our internal systems in a more efficient way.” — *Justin Brown, Senior Software Engineer, John Deere*



Thank you! Any Questions?

Ghulam Jafferi, 3M

Eran Kriegshauser, Basis Technologies

eran@basistechnologies.com

Chat with Ghulam at booth #2115 in the
Bellagio Ballroom

Please remember to complete
your session evaluation.

SAPinsider



SAPinsider.org

PO Box 982Hampstead, NH 03841
Copyright © 2023 Wellesley Information Services.
All rights reserved.

SAP and other SAP products and services mentioned herein as well as their respective logos are trademarks or registered trademarks of SAP SE (or an SAP affiliate company) in Germany and other countries. All other product and service names mentioned are the trademarks of their respective companies. Wellesley Information Services is neither owned nor controlled by SAP SE.

SAPinsider comprises the largest and fastest growing SAP membership group worldwide, with more than 600,000 members across 205 countries.
