

How SAP Access Control Customers Leverage Pathlock to Monitor Cross System Risks

Susan Stapleton, VP, Partner Advisory, Pathlock

SAPinsider
Las Vegas

2023

SAPinsider

WITH YOU TODAY



Susan Zortea
Global Governance



Peter Creal
Sr Director, Finance and Risk COE
GRC National Lead

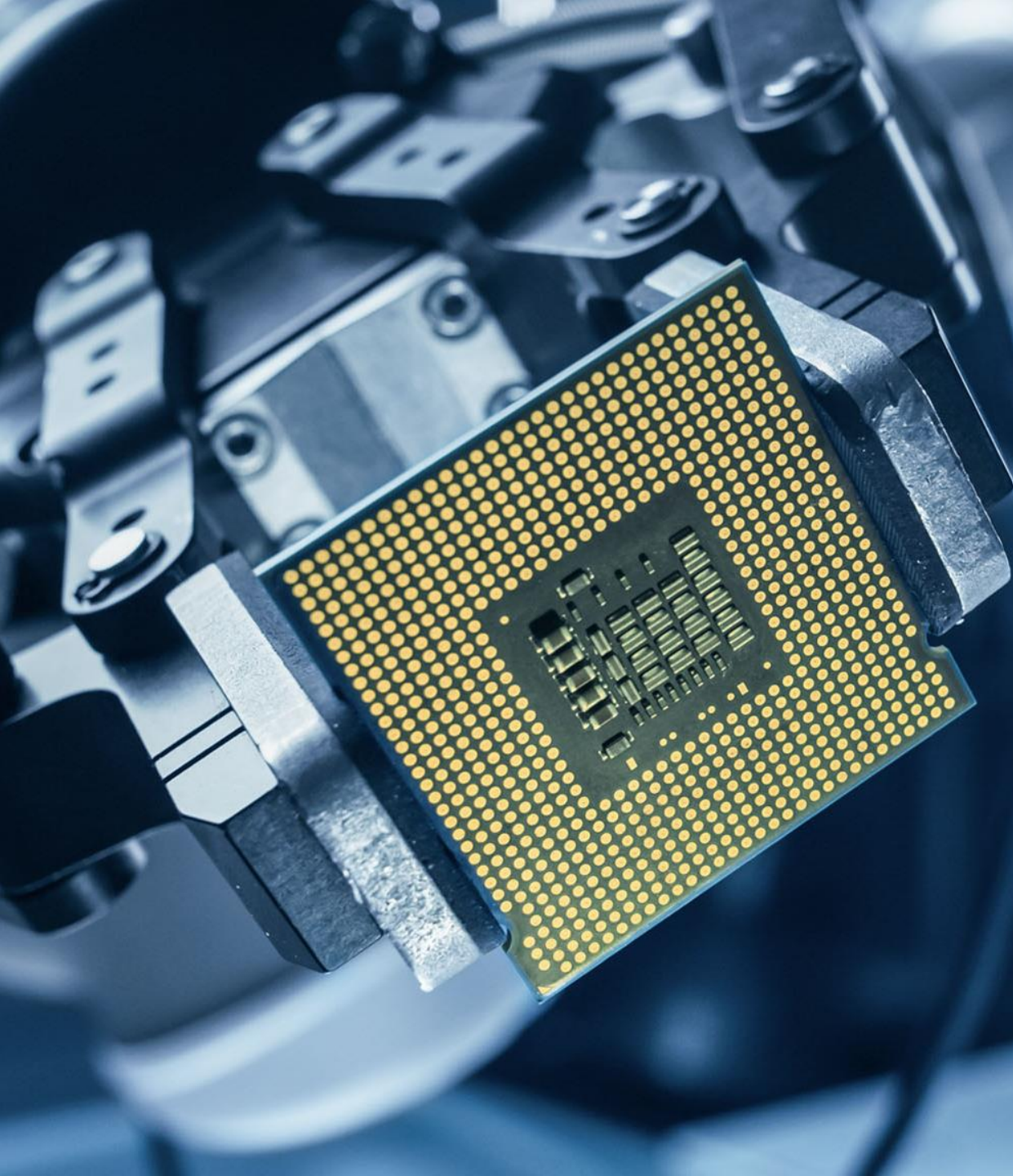


Rakesh Nazare
Sr. Analyst, SAP Security
and GRC



Susan Stapleton
VP, Partner Advisory
Pathlock





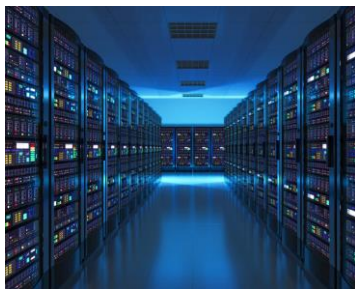
Susan Zortea

JABIL

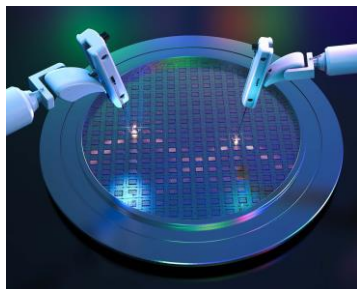
Markets Served



Networking & Telecommunications



Cloud, Compute & Storage



Capital Equipment



Industrial & Energy



Building Technologies



Safety & Security



Digital Print & Retail



Smart Home & Appliances



Consumer Devices



Optics



Automotive & Transportation



Defense & Aerospace



Healthcare



Packaging

Major SAP Instances

SAP Production System	Active Users	S4 HANA Deployment
ECC S/4(Commercial)	~40,000	S4 1909 Completed in January, 2022
ECC (Nypro)	~3,000	Planning in process
ECC (Healthcare P02)	~5,000	Planning in process
BW	~2,300	Not planned
GRC	~11,000	Server migration completed – Upgraded to AC 12.0 SP14 May 2022
MDG	~2,000	Upgrading to S4 (Project in progress)
SOLMAN	~900	Not planned

Major SAP Instances

SAP Production System	Active Users	S4 HANA Deployment
ECC S/4(Commercial)	~40,000	S4 1909 Completed in January, 2022
ECC (Nypro)	~3,000	Planning in process
ECC (Healthcare P02)	~5,000	Planning in process
BW	~2,300	Not planned
GRC	~11,000	Server migration completed – Upgraded to AC 12.0 SP14 May 2022
MDG	~2,000	Upgrading to S4 (Project in progress)
SOLMAN	~900	Not planned



GRC Focus

Quarterly review on version and SP available

GRC team will consider installing support packs on a regular basis, so that all aspects within the GRC server are working accurately and efficiently, while providing information in a timely manner.

User Access Review

Jabil is currently implementing the User Access Review module within Access Control. UAR utilizes the standard GRC workflow, automates the process of the required user access review, and executes modifications to users' access in SAP as needed.

Firefighter Log Review

Replacing the manual firefighter log review with the GRC standard firefighter log review workflow. Will remove the possibility of errors that can occur in a manual review.

Critical Transaction Review

Replacing the manual critical transaction review with the GRC standard workflow review. Includes the regular review of critical transactions, much like the annual SoD review.

Critical Transaction Review

Replacing the manual critical transaction review with the GRC standard workflow review. Includes the regular review of critical transactions, much like the annual SoD review.

GRC Roadmap

Future Objectives

- Investigate the extension of SoD review risks to systems that interface with SAP
 - Coupa – currently done manually
 - MDG – currently done manually only for access in MDG
- Consider adding more risks to our AVM environment
 - AVM currently monitors 53 of our 93 risks.
- Explore the use of other modules within GRC
 - Process control
 - Continuous control monitoring
 - Expand Business role management





Rakesh Nazare

Who We Are



FAMILY OF BRANDS



PRODUCTS



Electricity



Natural Gas



Renewables



Backup Power

SERVICES



Home Security



Home Power



Energy Management



HVAC Services



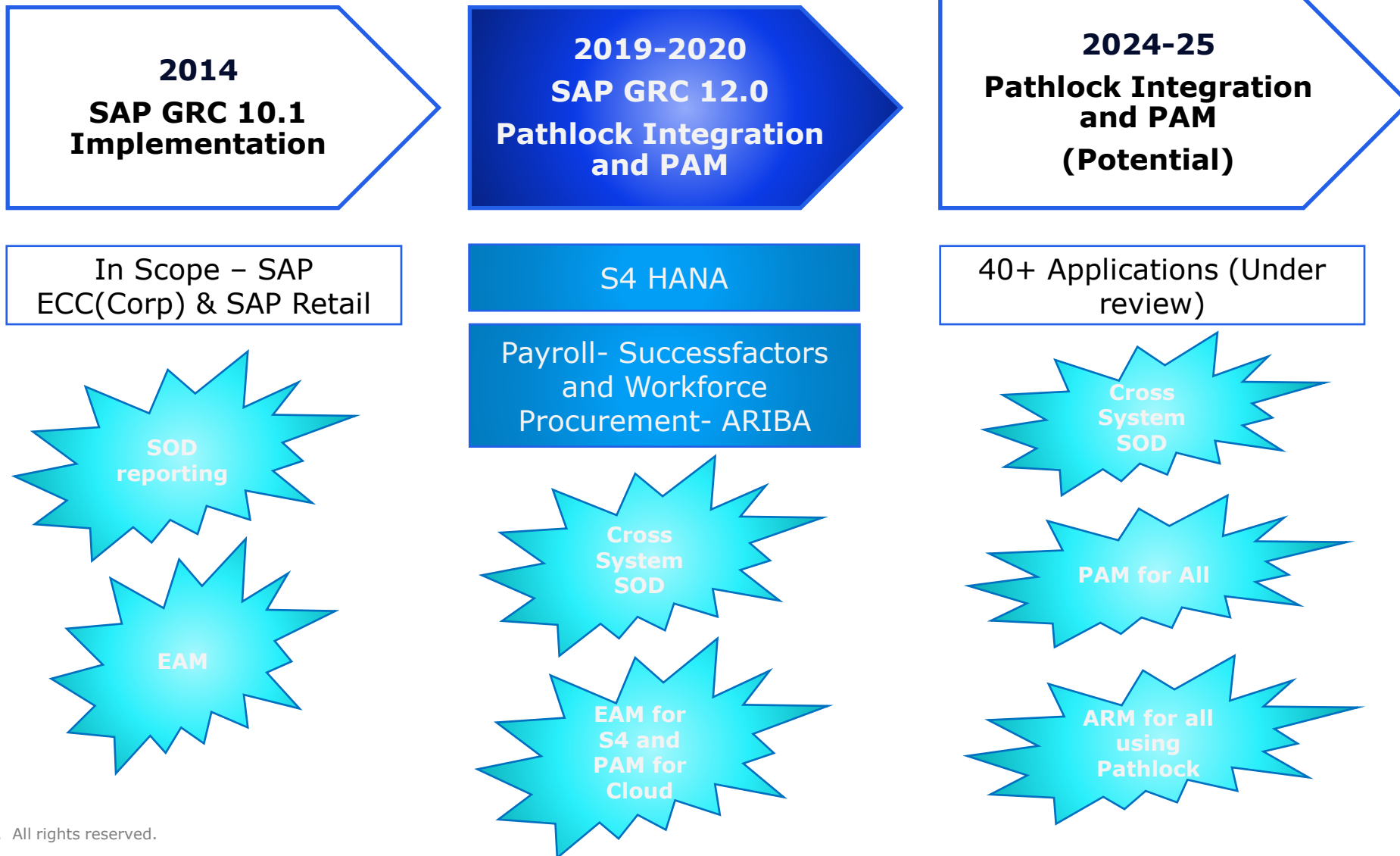
Protection Plans



Portable Power



EV Energy Plans



WITH YOU TODAY



Susan Zortea
Global Governance



Peter Creal
Sr Director, Finance and Risk COE
GRC National Lead



Rakesh Nazare
Sr. Analyst, SAP Security
and GRC



Susan Stapleton
VP, Partner Advisory
Pathlock



Thank you! Any Questions?

Susan Stapleton

sstapleton@pathlock.com

M: 314 882-1843

Please remember to complete
your session evaluation.

SAPinsider



SAPinsider.org

PO Box 982Hampstead, NH 03841
Copyright © 2023 Wellesley Information Services.
All rights reserved.

SAP and other SAP products and services mentioned herein as well as their respective logos are trademarks or registered trademarks of SAP SE (or an SAP affiliate company) in Germany and other countries. All other product and service names mentioned are the trademarks of their respective companies. Wellesley Information Services is neither owned nor controlled by SAP SE.

SAPinsider comprises the largest and fastest growing SAP membership group worldwide, with more than 600,000 members across 205 countries.
