



Beyond “Standard” Data Replication

Benjamin Deaver
Sr. Solution Architect
SNP Transformations

SAPinsider
Las Vegas

2023

SAPinsider

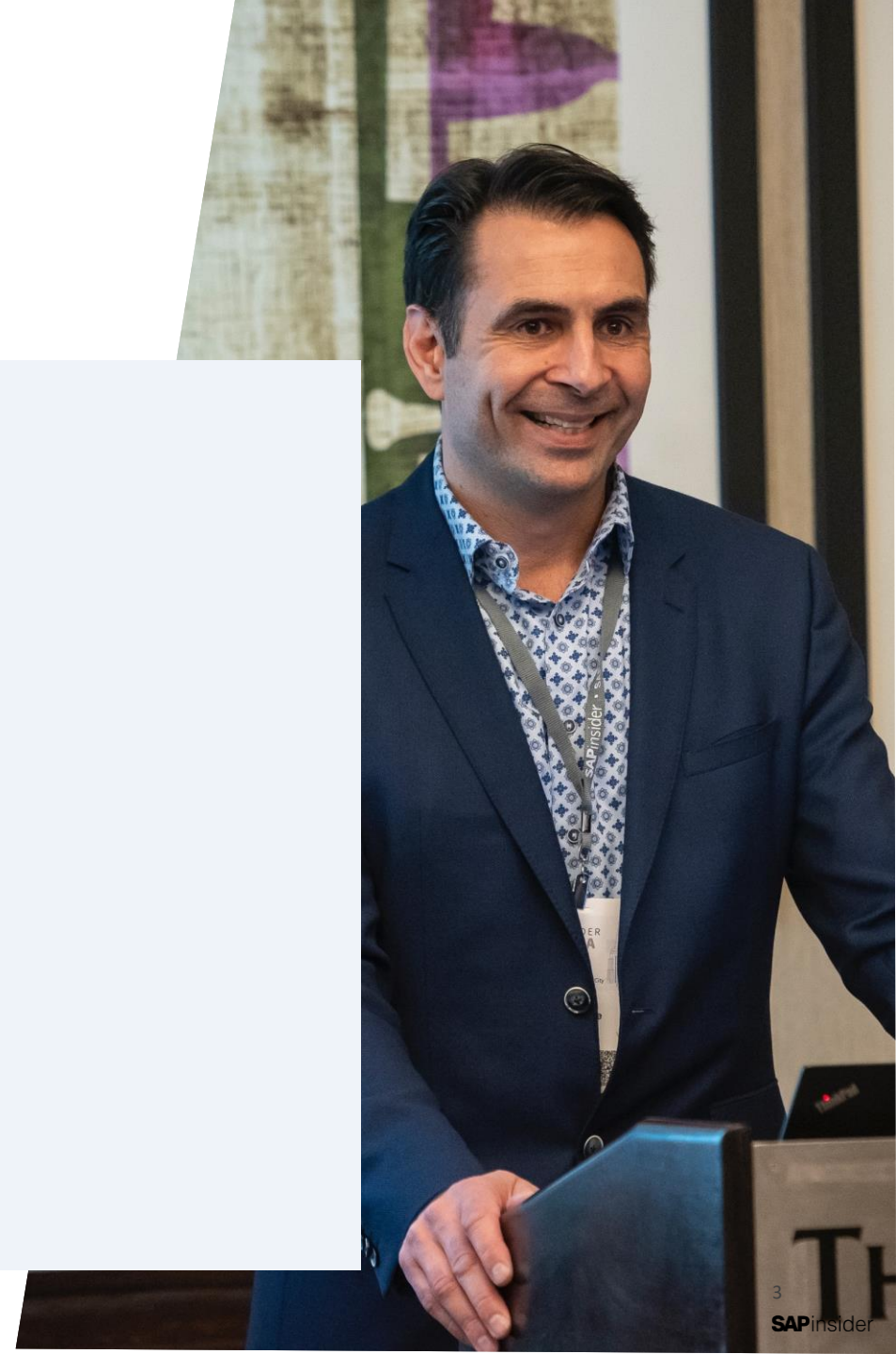


In This Session

Learn how SNP Glue can help your organization integrate your SAP data that has previously been unavailable or difficult to integrate. Jump start your analytics by rapidly making your SAP data available on multiple platforms in a near real time capacity!

What We'll Cover

- Why Do We Care About SAP Data Integration?
- What is SNP Glue?
- Quick Demonstration
- Wrap-Up



Why Do I Care About SAP Data Integration?

80%

of SAP data
integration projects
fail

98%

of the top 100 most
valued brands in the
world run SAP

77%

of the world's transaction
revenue touches an SAP
system

Integration Continues to be a Major Challenge

80%

of SAP data
integration projects
fail

- External integration & indirect access
- System performance, stability & long load times
- Delta load for large data volumes
- Connection to modern cloud innovation platforms
- Long lead times for preparing SAP data for innovative use cases

What is SNP Glue?

Native SAP Extraction, Replication and Streaming of SAP Data **easily and quickly** to your **platform of choice**, enabling integrated Analytics, Data Science and Data Warehouse Modernization

What is SNP Glue?

A unique, cost effective solution specialized to integrate your SAP data with the cloud and big data platforms for your data driven strategy

Extract – Transform – Load

- Easily **REPLICATES** SAP data from any SAP NetWeaver application like ECC or BW
- Existing ABAP logic & infrastructure available for transformations
- SAP plug-in installation – no additional hardware or DB access required
- Full governance over data extraction process with a “push” approach

UNLOCK SAP

- Broad support of SAP native objects (tables, views, extractors, BW objects and ABAP sources)
- Leveraging SAP Java connector to enable SAP to connect directly to a Cloud endpoints (SDK, JDBC)
- Virtualization of remote data sources within SAP environment

RAPID DEPLOYMENT

- Access to SAP Data Dictionary for fast & agile development
- High transfer speed, performance, and parallelization utilizing existing SAP application server deployment
- Familiar SAPgui environment

NATIVE INTEGRATION

- Leveraging SAP authorizations to restrict sensitive data sources in SAP
- SAP Transports & Software Logistics (TMS) for lifecycle management
- Integrated into existing SAP workflow for jobs execution & monitoring

What is SNP Glue?



Data Sources

SAP ERP, SAP CRM, SAP BW

- ERP Tables
- Custom ABAP extractors (Business Logic ABAP API, Function Module etc.)
- Views (HANA calculation and CDS Views)
- BW Extractors (SAPI/ODP)
- Info Providers (DSOs, ADSOs, Cubes)
- BEx queries
- Raw data

RDBMS (MSS, Oracle, DB2, SAP HANA ...)

Cloud APIs (salesforce, HubSpot)



Data Processing

Transformation

(e.g. Field mapping & lookups)

- Business Process Library (Friendly Fields, Currency normalization, Glue Business Functions, Enrichment)
- Automatic Extraction Templates from SAP Data Dictionary
- Rich filtering – utilize standard SAP select options
- Generic + Trigger based Delta modes
- BW dataflow integration with support of (a)DSOs, Cubes, BEx queries
- Bi-directional extraction & Virtualization

Mass execution + parallelization



Data Targets

Cloud & Big Data

- Microsoft Azure
- AWS
- Google Cloud Platform
- SAP HANA Enterprise Cloud
- Cloudera (Hive/Impala)
- Spark clusters (DataBricks)
- Snowflake

RDBMS (MSS, Oracle, DB2, ...)

Cloud APIs (nifi, Kafka)

What is SNP Glue?

Product Features / Requirements	Benefits	SNP GLUE
Wide Support for SAP Systems	Seamless Integration	ECC, S/4HANA, BW, BW/4, CRM, SRM, etc – any Netweaver Apps
Cloud APIs as Target Consumer	Seamless Integration	Available – e.g., Kafka, nifi, Rest APIs
Target Platform flexibility (Cloud/on-Prem)	Seamless Integration	40+ Storage types supported (AWS, GCP, Azure, Snowflake, Cloudera, AnyDB, RestAPI, Hadoop, etc.)
Extract-Replicate-Stream any SAP Data natively	Rapid Deployment	SAP Tables, Extractors, Views, InfoProviders, BEx queries, Cloud APIs
Business Process Library (Friendly Fields, Currency normalization, Glue Business Functions, Enrichment)	Rapid Deployment	Available
Automatic Extraction Templates from SAP Data Dictionary	Rapid Deployment	Available
Data Load capability – Full and Delta	Support complex use-case	Out of the box: Generic + Trigger based Delta modes
Real-time / Batch / CDC / Streaming / Event-driven	Support complex use-case	Available. Enterprise-ready and High Speed
Mass execution + Parallelization	System Performance	Available
SAP Compliant Access – User license, Indirect access, HANA DB license	Audit compliance	SAP-certified & Compliant: Native ABAP integration, Push Approach, Leverage SAP Authorization Concept
Team Upskilling requirement	Team & time constraints	Minimal training required. Existing team can handle
Additional Hardware/Server requirement	IT Cost savings	Not required; SAP Plug-in via SAP transport

Quick Demo!



Wrap Up

- **Data Integration Continues to be a challenge for many SAP Customers.**
- **SNP Glue provides an affordable turnkey solution to democratize your SAP data across your enterprise.**
- **Rapid exposure of valuable SAP Data to Analytics / Business Intelligence / AI / ML / etc.**
- **SAP Certified Solution.**
- **Push from Netweaver - no new hardware or infrastructure.**
- **Fast to develop, Fast to integrate, Fast to deliver value.**

Where to Find More Information

<https://datavard.atlassian.net/wiki/spaces/DATAVARD/pages/666829160/SNP+GLUE>

- SNP Glue Documentation / User Guide / Installation Guide

<https://www.snpgroup.com/en-us/snp-glue>

- SNP Glue Details

<https://blog.snpgroup.com/blog/snp-glue-new-exciting-use-cases>

- SNP Glue Blog Post

https://527622.fs1.hubspotusercontent-na1.net/hubfs/527622/SNP%20Glue_Solution%20Brief_en.pdf

- SNP Glue Solution Brief

<https://youtu.be/fR1q5BrYku4>

- Customer Testimonial – United Farmers of Alberta

https://youtu.be/Kw45BH6K_Zc

- Webinar – Transform Your Business with SNP Glue

Key Points to Take Home

- **Rapidly Integrate Your SAP Data with 40+ Targets**
- **Near Real Time Integration**
- **Robust Delta Functionality**
- **Jump Start Analytics**
- **Rapidly Deliver Value to the Organization**



Thank you! Any Questions?

Benjamin Deaver

Senior Solution Architect

<https://www.linkedin.com/in/benjamin-deaver-610a433/>



Benjamin.Deaver@snpgroup.com

Please remember to complete
your session evaluation.

SAPinsider



SAPinsider.org

PO Box 982Hampstead, NH 03841
Copyright © 2023 Wellesley Information Services.
All rights reserved.

SAP and other SAP products and services mentioned herein as well as their respective logos are trademarks or registered trademarks of SAP SE (or an SAP affiliate company) in Germany and other countries. All other product and service names mentioned are the trademarks of their respective companies. Wellesley Information Services is neither owned nor controlled by SAP SE.

SAPinsider comprises the largest and fastest growing SAP membership group worldwide, with more than 600,000 members across 205 countries.
