

# How to Deploy Successfully in Times of Crisis and Disruption

Tammy Powlas— December 1, 2021

THE MOST TRUSTED INDEPENDENT  
INFORMATION SOURCE FOR SAP  
ENTERPRISE SOFTWARE CONTENT

SAPINSIDER COMMUNITY  
500,000+ STRONG



# Tammy Powlas



**SAP Mentor**

**CPA, PMP**

**Recognized SAP Community Top Contributor**

**Click to add Bio**

# What We'll Cover

## Caption

- How to implement S/4HANA

## Caption

- Importance of sandbox migration

## Caption

- Free tools to start your S/4HANA journey

# Topic 1

How to implement S/4HANA



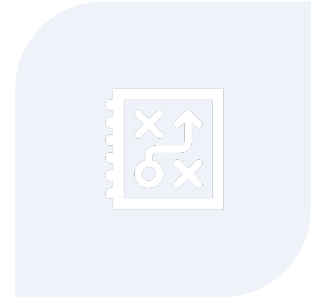
# Transforming business to S/4HANA – the How



BUILD BUSINESS  
CASE



DEFINE YOUR  
ROAD MAP



EXECUTE

# Core Transformation Plan

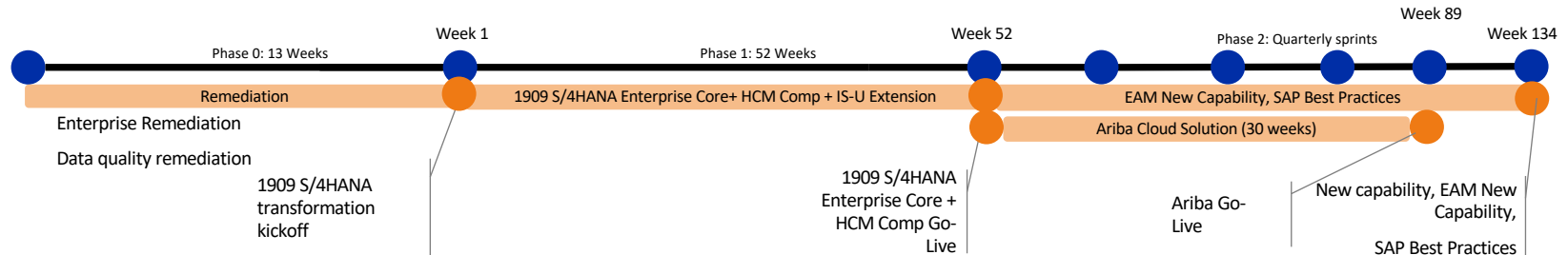
Based on your company's Strategic plan, Leadership inputs and Business workshops the following transformation plan was developed.

## Convert ECC 6.0 to S/4HANA Enterprise Core 1909\*, Utility extension.

(\* Dates below are indicative, examples for illustrative purpose. Project dates TDB)

### Phase 0: Remediate data and prep for system transformation to S/4HANA.

- Data cleansing is a priority for current and future system transformation
- **Phase 1: Transform ECC 6.0 to S/4HANA Enterprise core 1909, HCM Compatibility pack, EAM as-is core, Utilities ext.,**
  - Return Fairfax water to business continuity and business as usual fastest while addressing all major leadership priorities
  - Prepare and build platform for adoption and innovation in customer service, asset management, geo enablement and cloud services
- **Phase 2: Uptake and consume new capability (Geo Enablement, Work Manager etc), best practices in sprints.**
  - Consume innovations in sprints to meet long term strategic goals – EAM new capabilities -Work Manager, Geo Enablement etc.
- **Phase 3: Roll out cloud solution in waves at FW discretion**
  - Optimize for efficiency and innovate with cloud solutions – Ariba

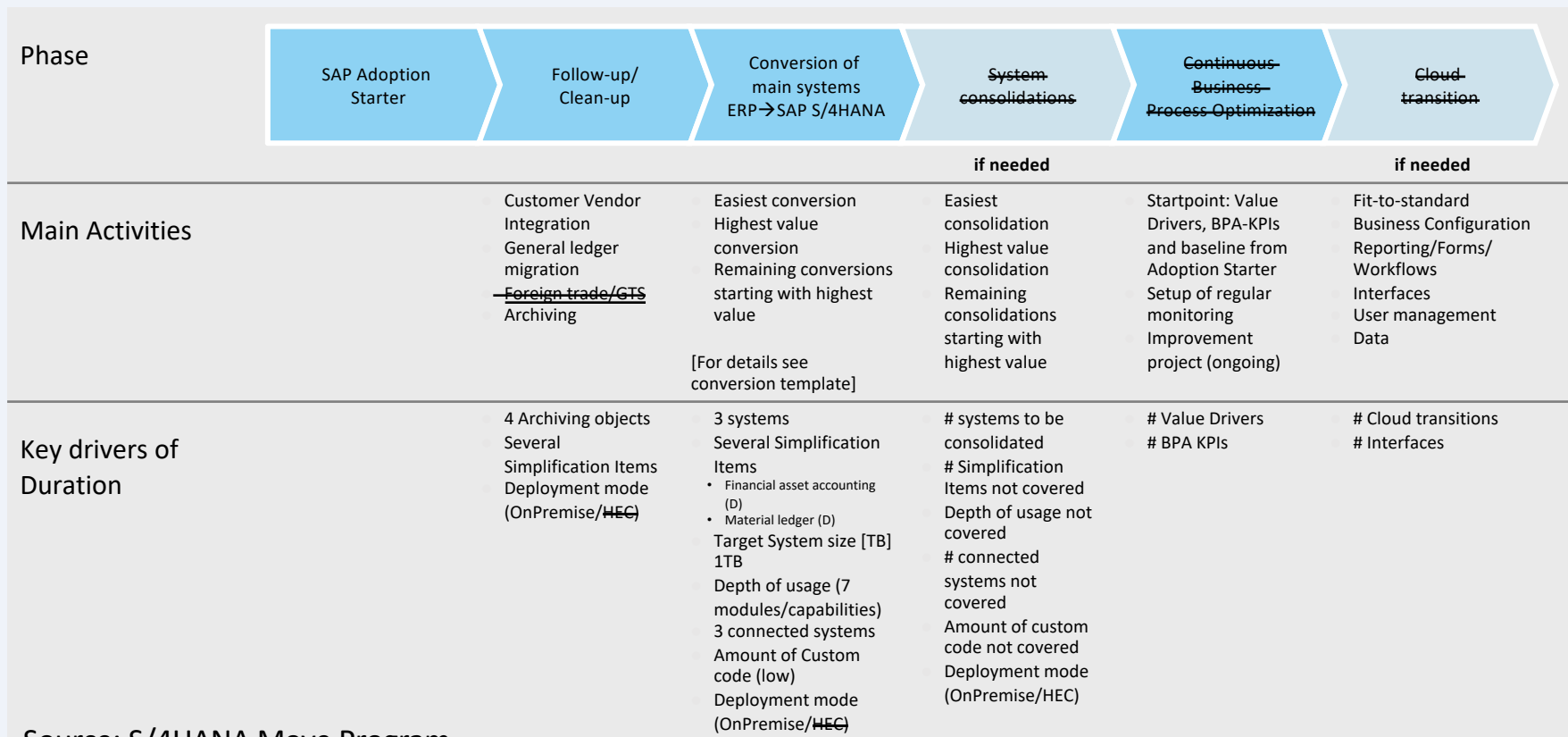


# Transition Plan

Guiding Questions			Implications on Migration	Proposed Transition Pattern
<div>low</div> <div>Involvement of lines-of-business</div> <div>high</div>	IT	NO	Conversion of leading S/4 instance Business Process Optimization after S/4 step	<b>1. Technical Migration first</b>
		Cloud Transitions included?	1. Conversion of leading S/4 instance 2. Business Process Optimization after S/4 step	1. Technical Migration first incl. Cloud phase
		YES	3. Cloud move after S/4 step	
		NO	1. Conversion of leading S/4 instance 2. Consolidation onto S/4 frontrunner	1. Technical Migration first incl. consolidation phase
	Business	YES	1. Conversion of leading S/4 instance 2. Consolidation onto S/4 frontrunner	1. Technical Migration first incl. consolidation and Cloud phase
		Cloud Transitions included?	3. Business Process Optimization after S/4 step 4. Cloud move after S/4 step	
		NO	1. Cloud move before S/4 step 2. Conversion of leading S/4 instance	2. Continuity & Innovation
		YES	3. Business Process Optimization after S/4 step	
	Conversion	Instance Consolidation?	1. Cloud move before S/4 step 2. Conversion of leading S/4 instance	2. Continuity & Innovation incl. consolidation phase
		YES	3. Consolidation onto S/4 frontrunner 4. Business Process Optimization after S/4 step	
		Conversion approach favored?	1. Start with Business Process Redesign 2. Cloud move before S/4 step	3. Guided design for business need based on Model Company
		YES	3. New implementation of main S/4 4. Use of model company	
	Greenfield	Use of Model Company?	1. Start with Business Process Redesign 2. Cloud move before S/4 step	3. Guided design for business need
		NO	3. New implementation of main S/4 4. Use of best practice content	

Source: SAP S/4HANA Move Program

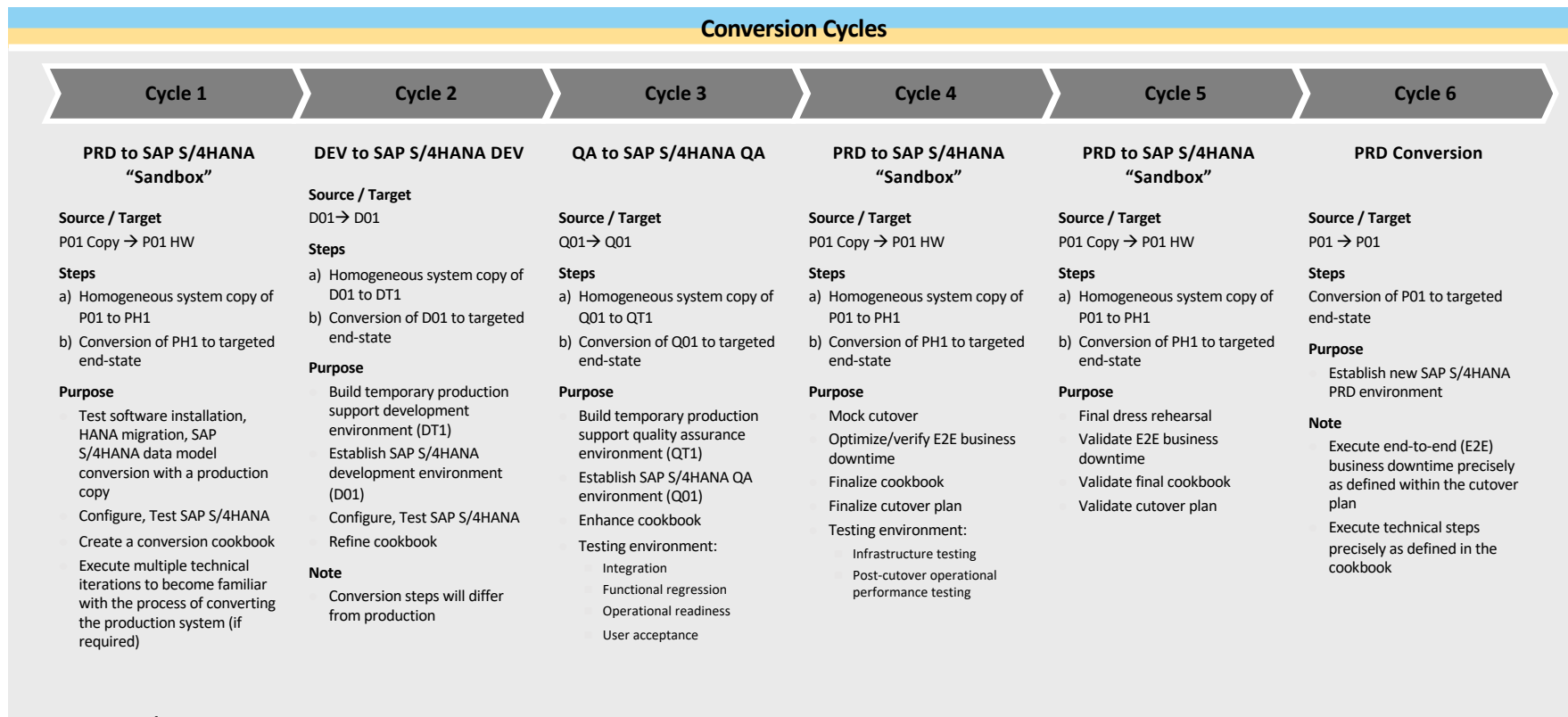
# Transition Plan



Source: S/4HANA Move Program



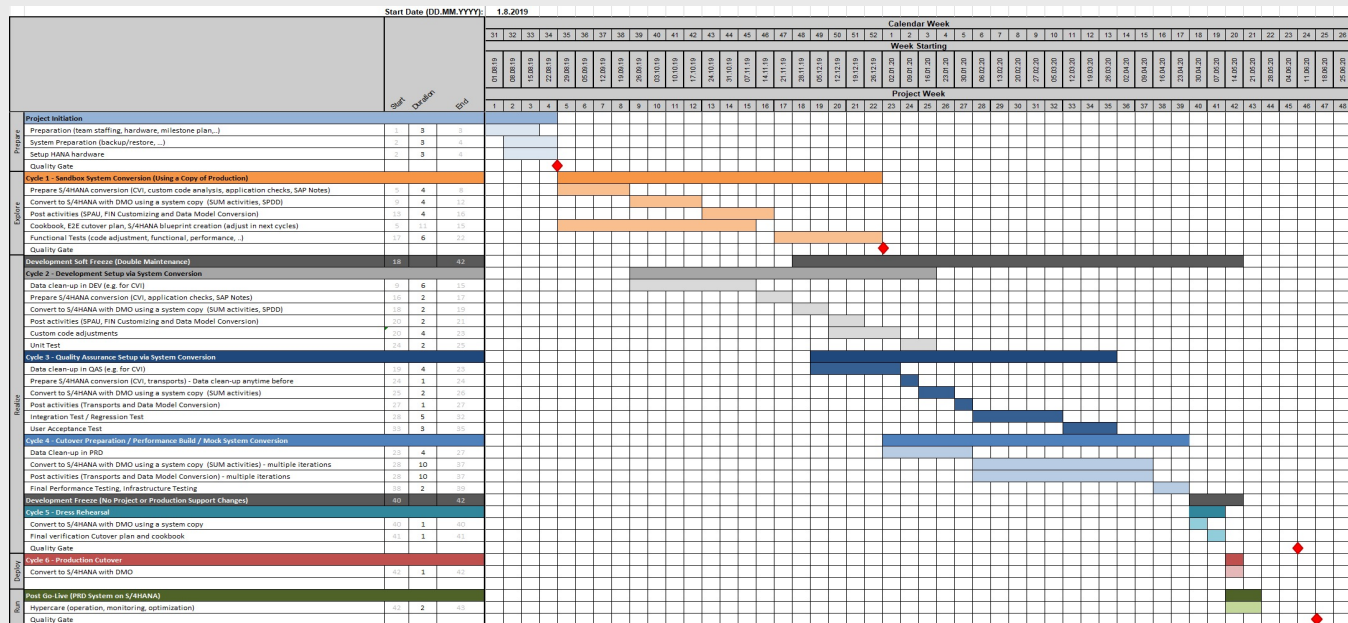
# Detailed timeline for SAP S/4HANA implementation – conversion



Source: S/4HANA Move Program

## Detailed timeline for SAP S/4HANA implementation – conversion

## SAP S/4HANA conversion timeline



## Detailed timeline

Use this Excel file



Microsoft Excel  
Worksheet

For more content and templates go to: <https://go.support.sap.com/roadmapviewer/>

# Tools Used

- **Check the Tools**


Prerequisite	Comments/Notes
Collaboration Tool	SharePoint/MS Teams
Business Process List	Unit testing, authorization testing
Readiness Check	Functional and Technical assessments, checks S/4HANA conversion compatibility
Transformation Navigator	SAP's road map of tools for your landscape
Business Scenario Recommendations	KPI's for business processes
Issue Tracking tool	Tracking issues



Checklist

# Master Data Consistency Check

Prevalidation: Master Data Consistency Check




**General Selection**

☒ Customer ☐ Vendor

Customer Number  to

Account Group  to



**Business Checks**

☒ Select All

<input checked="" type="checkbox"/> Tax Code	<input checked="" type="checkbox"/> Postal Code	<input checked="" type="checkbox"/> Email	<input checked="" type="checkbox"/> Transportation Zone
<input checked="" type="checkbox"/> Tax Jurisdiction	<input checked="" type="checkbox"/> Number Range	<input checked="" type="checkbox"/> Industry	<input checked="" type="checkbox"/> Bank Data
<input checked="" type="checkbox"/> Address			

**Technical Details**

Server Group	<input type="text"/>	Description	<input type="text"/>	<input checked="" type="checkbox"/> Background
--------------	----------------------	-------------	----------------------	--

Provides an exhaustive listing of the errors / inconsistencies in the existing customer & vendor master data records

The report gives the flexibility to identify the errors for a range of customer / vendor records

Transaction CVI\_PRECHK - See SAP Note <https://launchpad.support.sap.com/#/notes/2743494>

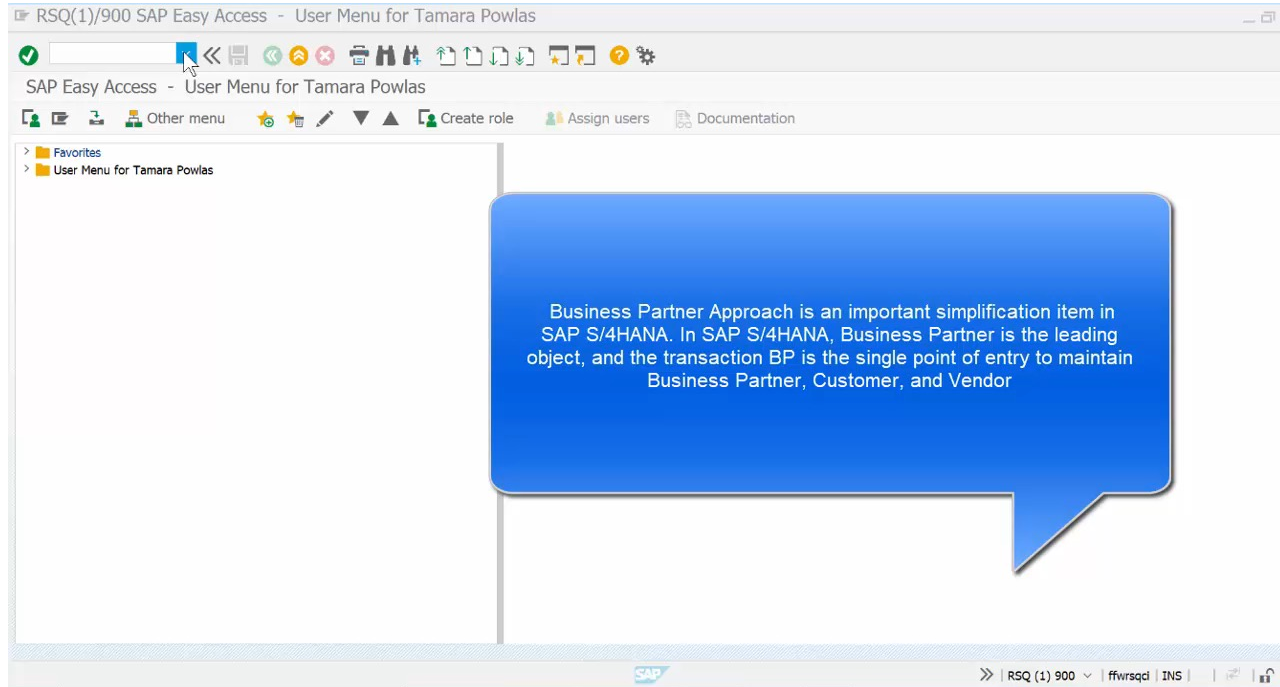
# Demonstration



## SAP Master Data Consistency Check

- Ability to mass change master data

# Demo of Master Data Consistency Check



# Master Data Consistency Check Doesn't Cover

- The consistency checks for master data are more restrictive than the pre-check (CVI\_PRECHK)
- The master data consistency check doesn't cover contact persons on the vendor master; you will need to check the quality of data in table KNVK

Table: KNVK

Text table

Layout


Maximum no. of hits: 5,000

Get Field

Customer Master Contact Partner

☐ No texts

☐ Maintain entries



Caution

Selection Criteria

Fld name	O... Fr.Value	To value	More	Output	Technical name
Vendor				<input checked="" type="checkbox"/>	LIFNR
Deletion flag				<input type="checkbox"/>	LOEVM
Origin				<input type="checkbox"/>	KZHERK
Address Number				<input type="checkbox"/>	ADRNP_2
Person number				<input type="checkbox"/>	PRSNR
PurposeComplete Flag				<input type="checkbox"/>	CVP_XBLCK_K

## Recommendations

- See if **archiving** can be done to reduce data volume to be converted; check Early Watch Reports
- Check the **compatibility of the 3rd party products** as soon as possible and allocate time for more extensive testing
- Plan **time for testing of roles and changes in authorizations (SU25, OpenSAP Course)**
- Use the **opportunity to replace Custom Code** with standard functionality where possible - sandbox
- Consider migrating from **SAPscript forms to Adobe Document Services**
- **Deletion of obsolete data after successful validation of the completed Conversion:**

Component	SAP Note	SAP Note Title
CA-EPT-ODH, CA-EPT-TAS	<a href="#">2661837</a>	How to enable and use the obsolete data handling tool in SAP S/4HANA
MM-IM-GF	<a href="#">2569435</a>	Remove content from obsolete tables in MM-IM: Save DB memory and remove data that is not covered by Information Lifecycle Management
FIN-MIG	<a href="#">2190137</a>	S/4HANA Finance: Reduce memory footprint of obsolete tables



## Topic 2

Importance of sandbox migrations



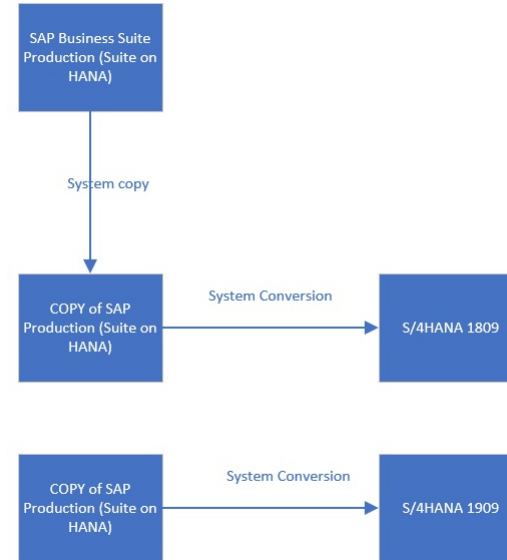
# Role of sandbox in a conversion project

- **Identify blockers, pre-projects, plan the project**
  - Pre projects include cleaning data, archiving, CVI, simplification items, resolve items from consistency check, custom code preparation, replace obsolete objects in custom code
- **Resolve blockers, execute pre-projects**
- **Start real system conversion**
  - Validation via SI check, confirm exemptions
- **Custom code adjustments**
- **Findings for the next system such as data inconsistencies**
  - See if you can resolve in your SAP ERP system

New topics compared to a system upgrade

# Multiple Sandbox Migrations

- **SAP says a typical customer performs 2-5 sandbox migrations**
- **We performed 2 migrations – once to 1809 and second to 1909**
- **Please also see SAP Note 2225322**



# S/4HANA System Conversion

- **Source System – SAP ERP 6.0, EHP xx, on any database or SAP HANA**
- **Unicode is required**
- **ABAP Single Stack**
- **SAP HANA database is not required**
- **See SAP Note 2769531**

## Notes on target system

- **SAP S/4HANA 1909 is based on ABAP Platform 1909**
- **Consider different OS coverage since ABAP Platform 1809**
- **See SAP Note 2620910**

SAP Business Suite  
Production (Suite on  
HANA)



S/4HANA 1909

# Sandbox Migration Prerequisites

- You should have a checklist for the prerequisites

Prerequisite	Yes/No	Comments/Notes
Procure Hardware OS/DB		
Application Server? Keep or change		
Readiness Check		
Customer Vendor Integration		
Simplification Item Check		
Add-on and Business Functions Compatibility		
Source database compatibility		
Operating system compatibility		
Deletion of client 066		
Dual stack split		



Checklist

# Sandbox Migration Planning

- **SAP recommends 2 to 3 test conversions on a sandbox/isolated system (refresh / new copy of the system might be necessary) before setting up the system**
  - An accurate project planning can be done only after the first conversion on a sandbox/copy of production has been finished
  - Identify all the activities which can be done at any time and execute them before or during the preparation phase
  - Plan two Dress Rehearsals (test conversion of productive system under real-time conditions)
  - Maintain a Run Book with as much as possible details, all the steps performed, the sequence, the errors and the resolution and also the time required for each activity.

# Sandbox Migration

- **Perform unit testing, note authorizations (run SU25 to remove obsolete authorization), regression testing**
- **Document what you learned during the migration**
- **If you have issues, look at the SAP Cloud Appliance Library S/4HANA instance at [cal.sap.com](https://cal.sap.com)**
- **Consider reviewing Fiori applications**

# Demonstration



## Activate Fiori Apps

- Using the SAP Fiori apps recommendation report, activate Fiori apps in your sandbox



## Topic 3

Free Tools to Start your S/4HANA  
Journey



## Upskilling to S/4HANA – the How



# SAP S/4HANA OpenSAP Courses

01

[Guide Your SAP S/4HANA Project to Success - Link:](https://open.sap.com/courses/s4h19)  
<https://open.sap.com/courses/s4h19> (started in September 2020)

02

Key Technical Topics in a System Conversion to SAP S/4HANA  
<https://open.sap.com/courses/s4h14> (update: started Q4/2020)

03

Key Functional Topics in a System Conversion to SAP S/4HANA  
<https://open.sap.com/courses/s4h15> (updated: Q4/2020)

# SAP S/4HANA Movement Program

## SAP S/4HANA MOVEMENT Program

### Standardized customer journey approach



#### Define your strategy

Plan the engagement and get executive buy-in



#### Make your case

Where and how will we realize our ROI?



#### Consider your options

What is our plan for deployment?



#### Build your future

Which best practices help ensure success?

Learn more: [www.sap.com/jointhemovement](http://www.sap.com/jointhemovement)

Image credit: SAP

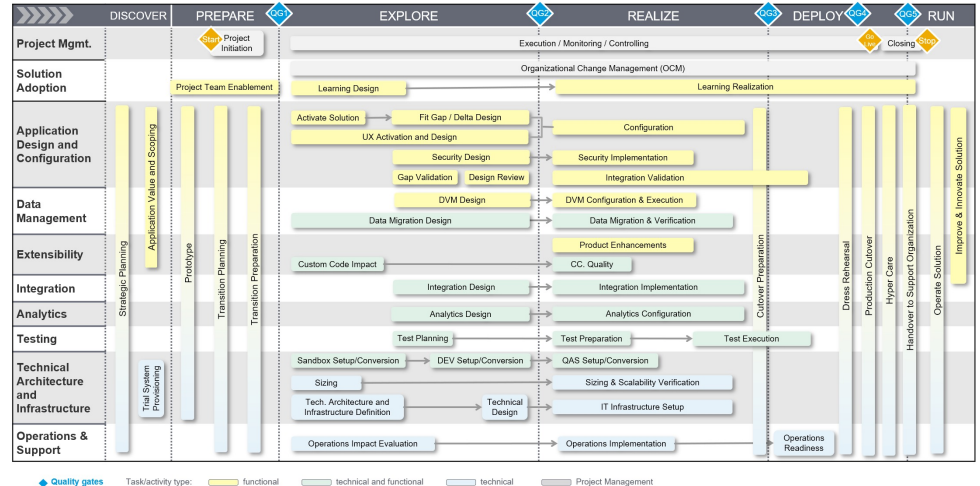
# Support to Move to S/4HANA

## “Transition to SAP S/4HANA” road map:

Best Practices project documentation in the Roadmap Viewer for all SAP customers to transition to SAP S/4HANA on-premise

- Graphical overview and structured end-to-end documentation of an implementation or conversion project, incl. project file templates
- Accelerators link to more detailed information, blogs, templates, training
- Links from project activities and tasks to services → Your guidance for SAP Support offerings

<https://go.support.sap.com/roadmapviewer/>



# S/4HANA SAP Enterprise Support Content

[SAP Enterprise Support Academy](#) enter the search tag “**SAP S/4HANA Discovery**” with the quotes

SAP Enterprise Support Academy

Search for learning content, available scheduled offerings, and more.

Search for the tag “SAP S/4HANA Discovery”  
with the **quotes**

“SAP S/4HANA Discovery”

Search

S-user ID is required to access the offerings of the SAP Enterprise Support Academy. Click for more information on how to sign up



[Tutorial & MTE & AIE](#)  
SAP S/4HANA The  
Essentials

[MTE](#) Tools for your SAP  
S/4HANA Journey



[Tutorial & MTE](#)  
Landscape  
Scoping

SAP Transformation  
Navigator

[Tutorial & MTE](#)

**Analysis &  
Discovery**



Value Map  
Business  
Process  
Improvement

[Tutorial & MTE](#)  
SAP Quick Value  
Assessment



SAP Project &  
Ongoing Effort

[MTE & Tutorial](#)

Greenfield vs  
Conversion

[Tutorial & MTE](#)



[AIE & Tutorial & MTE](#)  
Migration Paths

SAP Readiness  
Check

**Alignment and  
Consolidation**



**Prepare**



**Scoping**



**Analysis &  
Discovery**



Value Map  
Business  
Process  
Improvement

SAP Project &  
Ongoing Effort

[MTE & Tutorial](#)

Greenfield vs  
Conversion

[Tutorial & MTE](#)



[AIE & Tutorial & MTE](#)  
Migration Paths

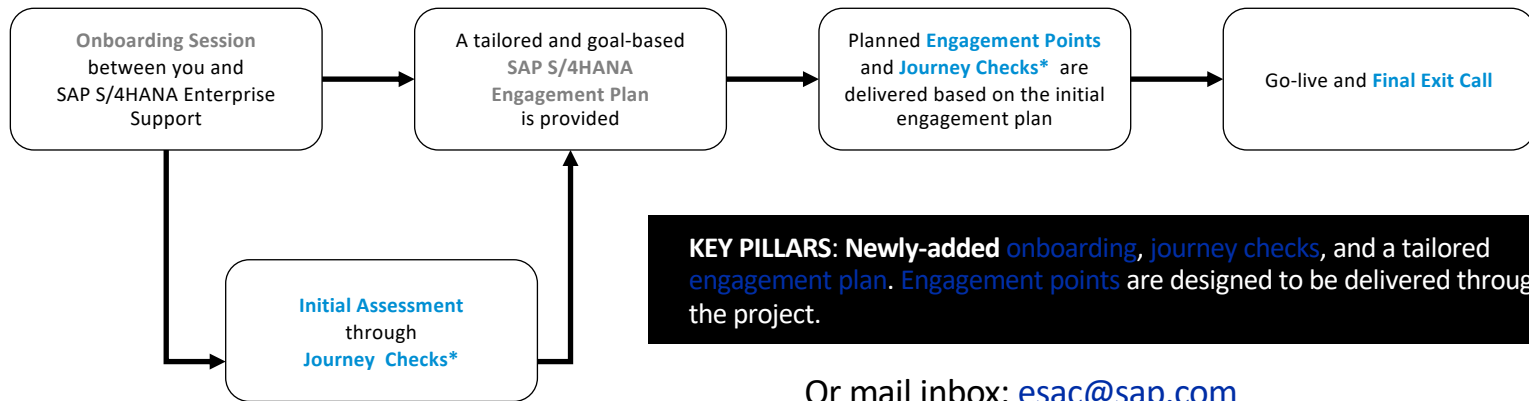
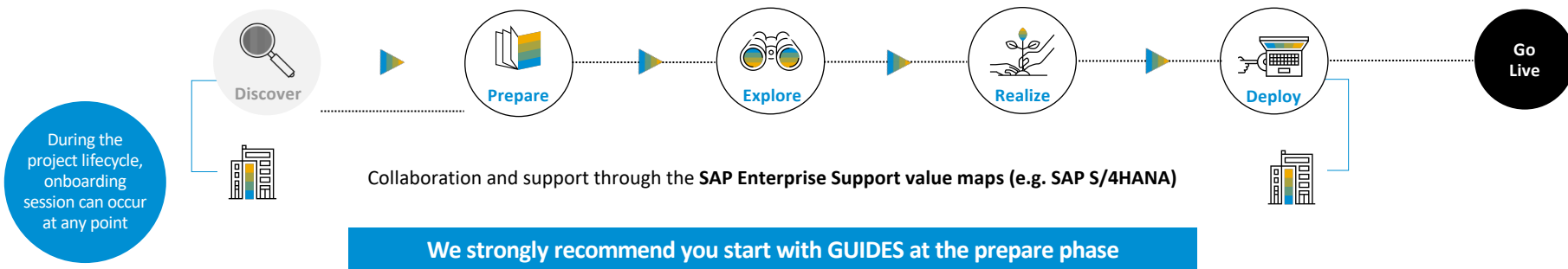
SAP Readiness  
Check

**Alignment and  
Consolidation**

Collaboration and Support through the SAP S/4HANA Value Map

\* Source: SAP

# How can SAP Enterprise Support Guides support you?



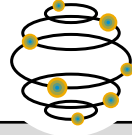
Or mail inbox: [esac@sap.com](mailto:esac@sap.com)

# SAP S/4HANA Move enablement offerings

10

## Steps to SAP S/4HANA

System Conversion hands on experience



S/4HANA experts explain step-by-step how to convert an SAP ERP system to SAP S/4HANA in 10 two-hour virtual classroom sessions distributed over a one-month period.

5

## Steps to SAP Fiori for S/4HANA

Hands on experience on Fiori Configuration



Within 5 live virtual sessions you understand how to unlock the full potential of the next-generation business suite by deploying existing FIORI applications.

### Resources profile

Basis  
consultant

ABAP  
Developer

Finance  
consultant

Logistic  
consultant

Tech/Basis

Developer

Application consultant  
(optional)

[Contact s4h\\_customer\\_care@sap.com](mailto:Contact_s4h_customer_care@sap.com)

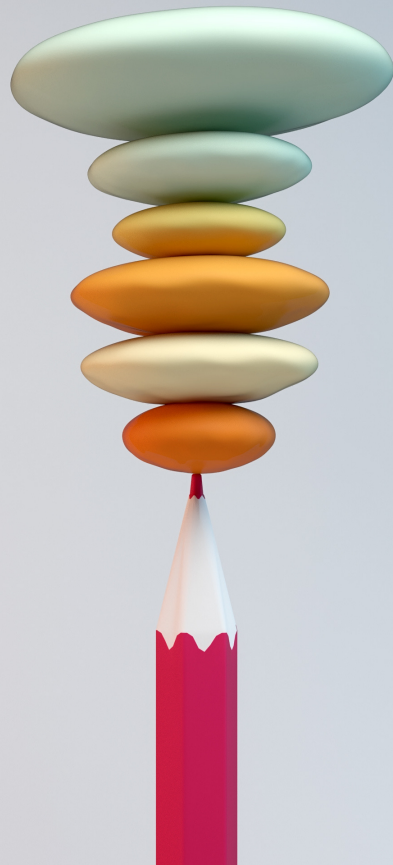
Coached end-to-end conversion process to SAP S/4HANA and deployment of Fiori applications

Based on latest officially available software releases



# Topic 4

Lessons Learned

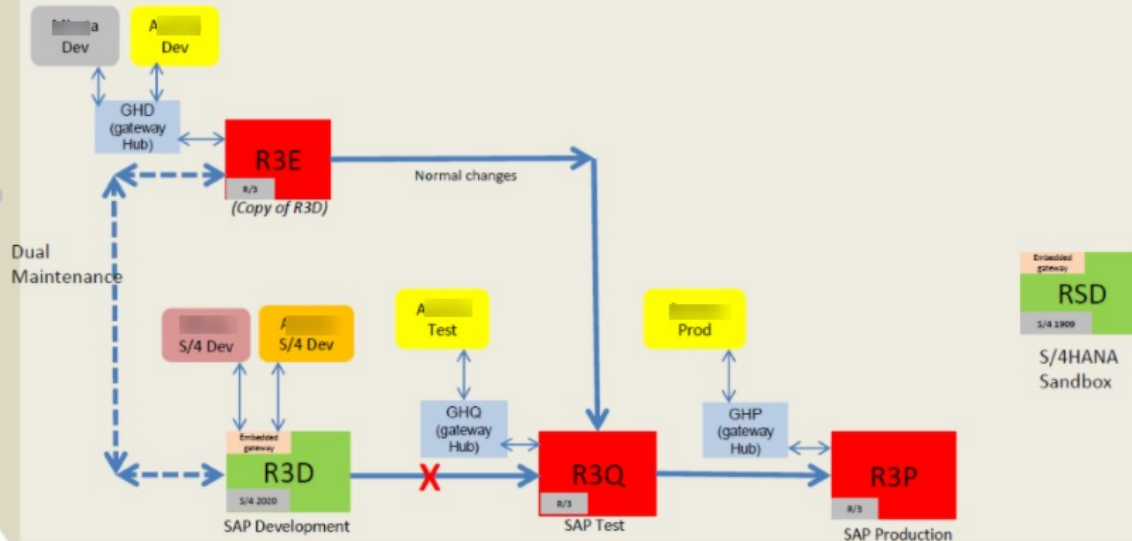


# Plan for a Dual Landscape

## Phase 1 – Development Conversion (January 2021) - Complete

Step 3

After R3D (Development) Conversion to S/4HANA With S/4HANA  
Compatible Resources



# Dual Landscape Progression

## S/4HANA – Proposed Conversion Landscape Progression

### Phase 2 – Quality Assurance (Test) Conversion (March 2021)

#### Step 1

Preparation of Regular R/3 Test System, R3Q, for S/4HANA Project



System copy From R3P to R3Q

#### Step 2

Preparation of Alternate R/3 Maintenance Test System, RSQ

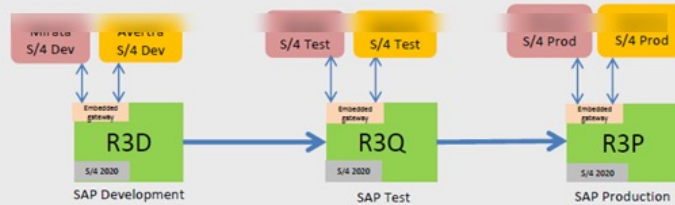


System copy From R3Q to RSQ

# Landscape at Go Live

## Phase 4 Production Conversion - GoLive

### S/4HANA GoLive Complete Landscape

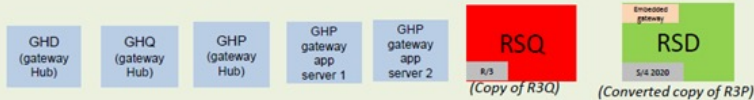


### Post-GoLive Candidates for Landscape Adjustments

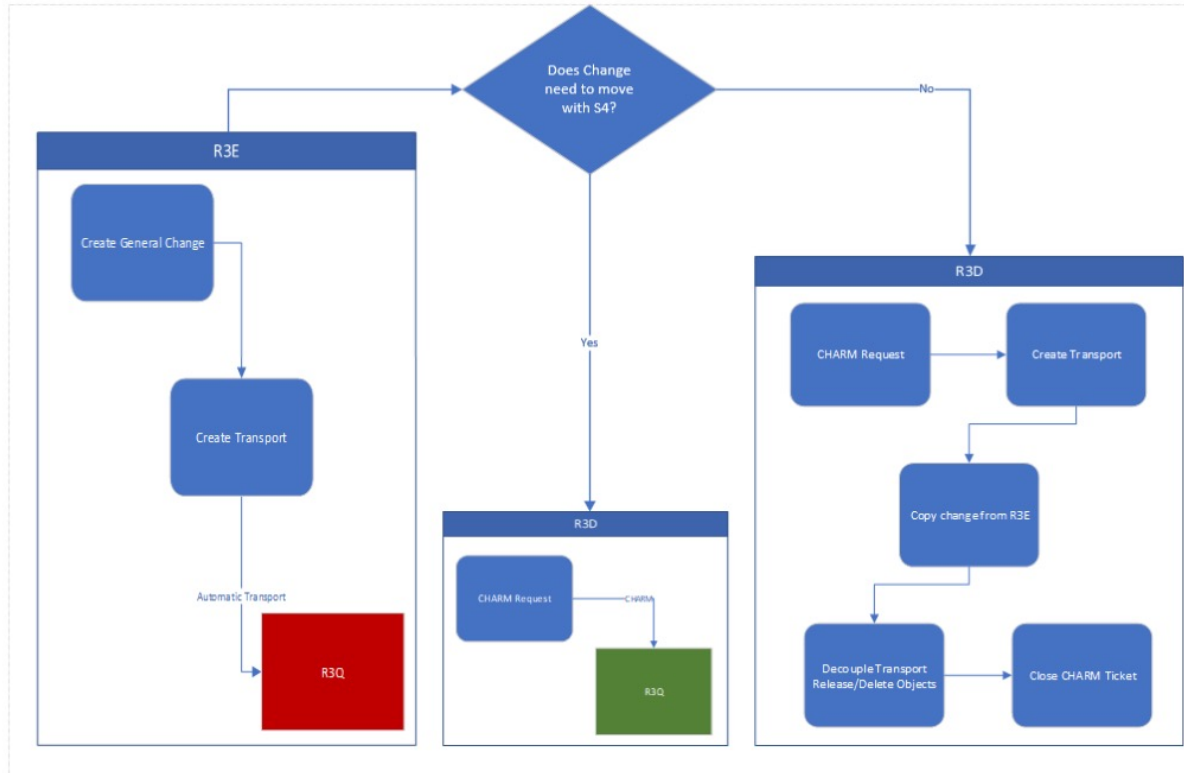
Temporary  
Pre-conversion R/3  
Reference System



### Systems No Longer Needed



# Change Control Dual Landscape



# Prior Planning Prevents Poor Performance

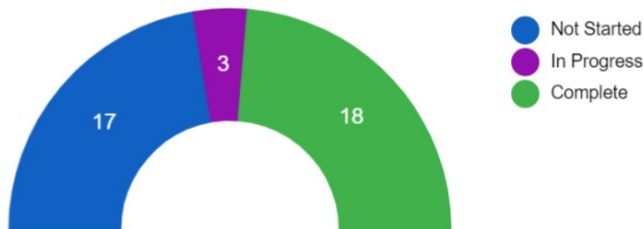
☆ Dashboard - Project Tracking (View Only) ⋮



## Project Tracking DASHBOARD



Tasks by Status



### Project Information

24%

Percent Complete

### Project Health



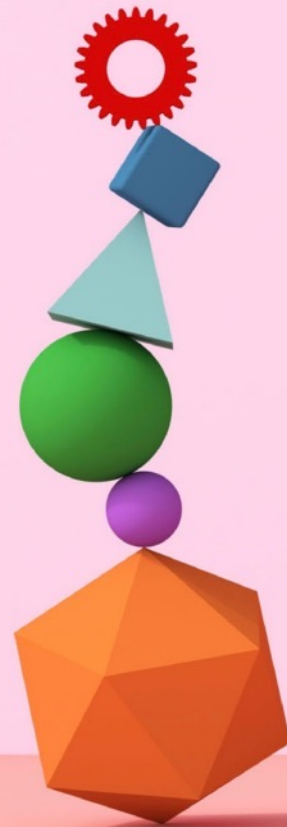
#### Project Vision:

- Upgrade ECC EHP8 to S4 HANA 1909 FPS03 for DEV, QAS, SBX (Mock), PRD

### Project shortcuts

- ☒ Project Folder
- ☐ Project Plan
- ☐ Contact List
- ☐ Server List Matrix
- ☐ Status Reports
- ☐ [Project Change Log](#)
- ☐ [Issue/Risk Register](#)

## Wrap Up



# Where to Find More Information



SAP products: [Discover SAP S/4HANA, SAP product & solution roadmaps](#)



OpenSAP course [“Your Path to SAP S/4HANA”](#)



SAP S/4HANA product related Training: [SAP S/4HANA Overview and Business Processes](#)



Also see appendices



Where to Find It



## Key Points to Take Home

- **Start early with those preparation and cleanup activities which can already be done in your current SAP ERP system – as indicated by the Simplification Items. Clean up your customer and vendor data in preparation for the Customer/Vendor Integration (CVI) in SAP S/4HANA.**
- **Join the SAP S/4HANA Movement Program**
- **Take advantage of SAP Enterprise Support offerings**
- **Try to join the S/4HANA Boot Camp when offered**
- **Perform sandbox conversion and document times, lessons learned**

## Where to Find More Information

- [www.somesite.com/whitepaper](http://www.somesite.com/whitepaper)
  - Paper describing the details of building components
- Vivek Sharma, “A Step-by-Step Tutorial for Developing Mobile Applications on SAP HANA” (BI Expert, May 2014).
- <http://help.sap.com>
  - Follow Product Hierarchy→ Supply Chain Management→ SAP Extended Warehouse Management→ SAP Extended Warehouse Management (SAP EWM)

**THANK YOU**

**Tammy Powlas**

**Fairfax Water**

**[tpowlas@fairfaxwater.org](mailto:tpowlas@fairfaxwater.org)**



PO Box 982Hampstead, NH 03841  
Copyright © 2021 Wellesley Information Services. All rights reserved.

SAP and other SAP products and services mentioned herein as well as their respective logos are trademarks or registered trademarks of SAP SE (or an SAP affiliate company) in Germany and other countries. All other product and service names mentioned are the trademarks of their respective companies. Wellesley Information Services is neither owned nor controlled by SAP SE.