

How to Get to the Update Rules

by John Kurgan, Manager, Inforte Corp.

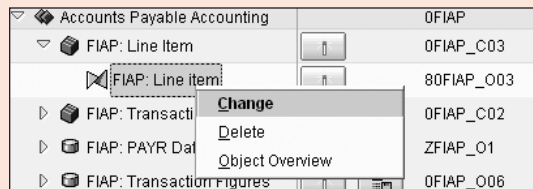


Figure 1 Select **Change**

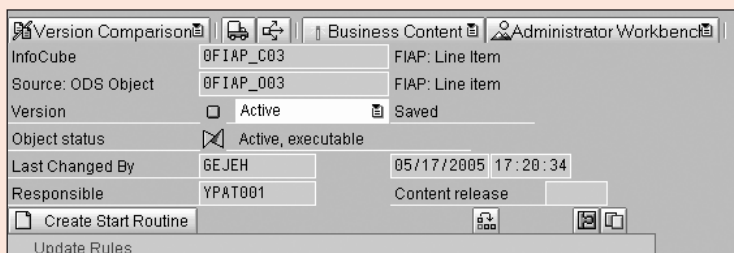


Figure 2 Create the start routine

I'll show you how to get to the update rules in BW 3.x and in SAP NetWeaver 2004s.

BW 3.x

To get to the update rules in BW 3.x, find your data target and click on the down arrow. Right-click on the update rules you would like to modify and select **Change** (Figure 1).

To access the start routine, click on the **Create Start Routine** button (Figure 2). If you already have a start routine, the button instead will say **Display Start Routine**.

To access the individual characteristic routines, double-click on any **Key Figure** in the lower portion of the main update rule screen, which brings up a new screen. Select the **Characteristics** tab to see all the characteristic rules, which displays **Routine** as an option (Figure 3).

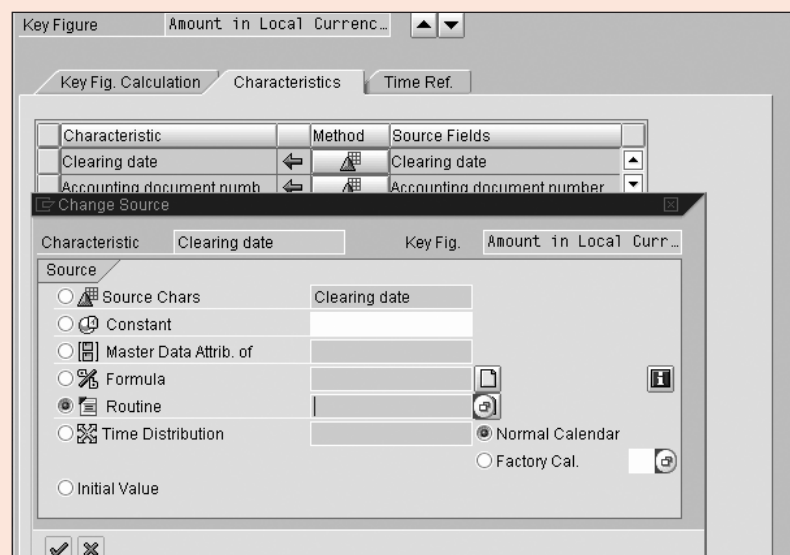


Figure 3 Routine in the **Characteristics** tab

SAP NetWeaver 2004s

In the BI capabilities of SAP NetWeaver 2004s, expand the data target tree to see preceding objects. Right-click on the transformation process and select **Change** (Figure 4).

You now can find the **Start Routine** and **End Routine** in the upper toolbar (Figure 5).

The remaining portion of the transformation process will be placed in the right hand window.

Double-click on the arrows connecting source fields to target fields (Figure 6).

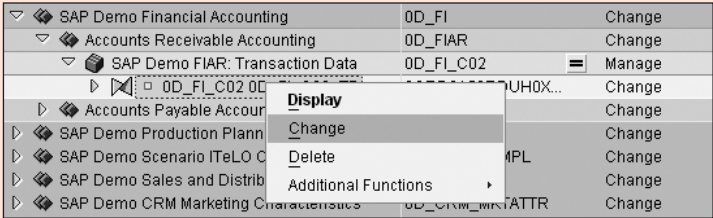


Figure 4 Select Change

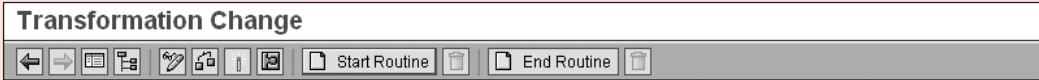


Figure 5 Transformation Change toolbar

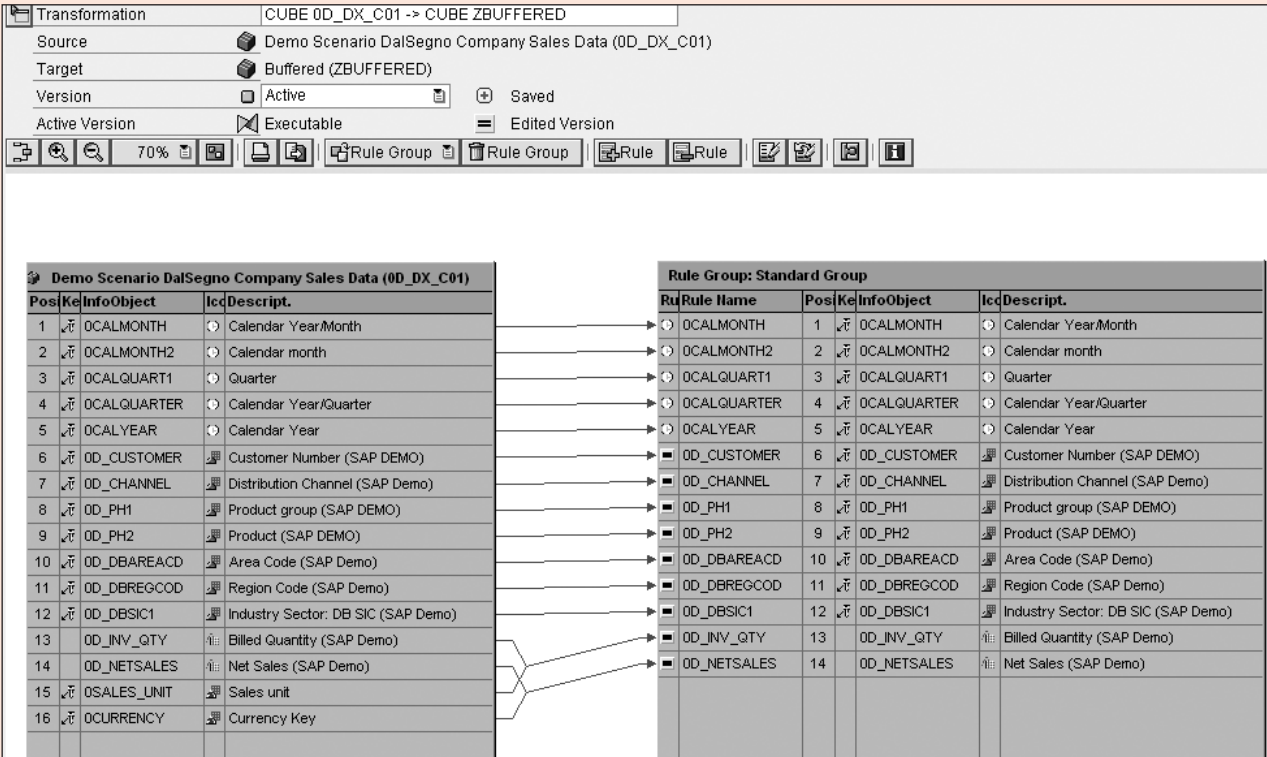


Figure 6 Double-click on the arrows

When presented with the screen in **Figure 7**, select **Routine** under **Rule Type**.

Immediately after selecting **Routine**, an ABAP editor screen for the routine appears (**Figure 8**). ■



John Kurgan is a manager at Inforte Corp., headquartered in Chicago, IL. He has been fortunate enough to work as a BW consultant for clients in the US, Japan, Australia, the Netherlands, and Great Britain. John is an avid Washington, DC, sports fan, where he is originally from. You may contact him at jlkurgan@yahoo.com.

Figure 7 Select Routine

Figure 8 Routine ABAP editor screen